



**Jefferson Beach Yacht Sales**  
24400 Jefferson Avenue,  
St. Clair Shores, MI 48080  
Phone: 866-490-5297

# Carver C34 Coupe

Boat Type: Motor Yacht



## OVERVIEW

### **Turning heads is easy when you make waves.**

The new Carver C34 Coupe was designed for a new generation of boaters. Boaters who want bold styling, an expansive interior layout, plus renowned Carver comfort and seaworthiness. All in a compact package that's easy to handle and offers outstanding performance.

No wonder the new C34 Coupe is attracting a whole lot of attention.

## SPECIFICATIONS

### Basic Information

Manufacturer:	Carver	Boat Type:	Motor Yacht
Model:	C34 Coupe	Hull Material:	Fiberglass
Hull Type:		Category:	Power

### Dimensions & Weight

Length:	34.00 ft	Draft - max:	3 ft 4 in - 1.01 meter
LOA:	34 ft - 10.36 meter	Bridge Clearance:	10 ft - 3.05 meter
Beam:	11 ft 6 in - 3.51 meter	Dry Weight:	17300 ft
Deadrise Aft:	-		

### Tank Capacities

Fuel Tank:	210 gallons - 1 tank(s)	Holding Tank:	30 gallons - 1 tank(s)
Fresh Water Tank:	78 gallons - 1 tank(s)		

### Accommodations

Total Cabins:	1	Crew Cabins:	-
Total Berths:	-	Crew Berths:	-
Total Sleeps:	6	Crew Sleeps:	-
Total Heads:	1	Crew Heads:	-
Captains Cabin:	No		

## FEATURES

### STANDARD FEATURES

#### Construction

- CE Class B
- 10-year structural hull limited warranty.
- Hull and deck: Hand-laid structural and non-structural fiberglass and core laminates bonded with infused resin.
- Hull bottom: Surface beneath the water line is bead blasted to create an optimal bonding surface for the anti-fouling paint, which is sprayed onto the hull to create a smooth running bottom.
- Stringer system: Fiberglass stringers are used throughout the yacht.
- Interior bulkheads, cabinets and drawers are precision cut, hand-crafted and constructed from a selection of woods and high-pressure laminates. Drawers are lined with laminate.
- Meets or exceeds all applicable U.S. Coast Guard safety standards
- NMMA certified
- CE certification available

#### Propulsion

- Twin Mercruiser 4.5L 250HP – fresh water cooled – Sea Core – B3 Stern Drives
- Engine alarm system
- Stainless Steel propellers – stern drives

- Trim tabs: Bennett Marine® stainless steel, electro-hydraulic trim tabs.
- Steering: Teleflex® SeaStar hydraulic steering
- Helm display: Digital LCD display showing tachometer, hour meter, oil pressure, coolant temperature, battery voltage, fuel tank level and rudder angle indicator

## **Decks & Hardware**

- Gunwale trim: rigid vinyl with stainless steel insert
- Cleats: (2) 10" bow cleats (2) 10" spring line cleats and (4) 10" stern cleats (1) 10" anchor cleat
- Hatch: bow, translucent, opening with screen
- Deck fitting: fuel fill (1)
- Deck fitting: fresh water fill (1)
- Deck fitting: waste, pump-out (1)
- Rails: bow, 1" stainless steel top rail, 1" stanchions, welded, with stainless secondary rail
- Grab rails – stainless steel
- Engine compartment power and static ventilation located in superstructure
- Transom platform - Fixed
- Swim ladder – under mount, centerline of swim platform w/recessed grab handle
- Nonskid fiberglass decks
- Vinyl ester barrier coat
- Anti-fouling bottom paint
- Bronze seacocks - all underwater through hulls - double SS hose clamps
- Nylon thru-hull fittings with Stainless Steel Caps – above waterline applications
- Standard white gel coat for hull &, deck
- Black vinyl boot stripe

## **Helm**

- Single helm seat
- Dash console, non-glare
- Engine controls: Engine manufacturer electronic
- Trim tab control
- Steering: hydraulic/electric
- Engine instrumentation: Engine manufacturer LCD display
- Compass: Ritchie, 4.5" flush mounted
- Steering wheel: Sport
- Accessory outlet, 12V (1)
- Dual USB charger outlet
- Provisions for optional navigation electronics package

## **Salon**

- Lights: overhead, 12V, 8 overhead, stainless steel
- Entertainment center: LED/LCD TV – 32"
- Flooring: Wood
- CO detector
- Elevated port sofa
- Opening window – starboard
- Electrical panels: AC installed in seat base
- Salon table: Hi-lo table pedestal
- Sliding door to cabin access, black acrylic, lockable, slides behind helm in open position

- Dash: Upholstered panels

### **Forward Stateroom**

- Sleeping berth, storage below
- Shelves: Hull sides
- Deck hatch: White translucent, opening with screen
- Lights: 5 overhead, LED
- Lights: 2 reading
- Lights: Rope light in upper soffit
- Storage: Port hanging locker
- Storage: Foreward starbord alongside berth
- (2) 110V outlets, ground fault protected
- Fixed hull glass window, window blinds
- CO detector

### **Head**

- Door: Locking
- Lights: (1) in shower overhead (3) in head compartment overhead
- Enclosed shower: Molded fiberglass floor liner, plexi door
- Vanity cabinet: Solid surface countertop and vessel sink, storage below
- Mirror: Above vanity, wood framed/storage
- Exhaust fan
- Electric head (fresh water flush)
- Towel bar
- Toilet paper holder
- 110V outlet, ground fault protected
- Fixed hull glass window with opening port

### **Electrical**

- Horn, 12V single trumpet
- Lighting fixtures, 12V (14)
- Navigation lights (USCG/COL REG approved)
- CATV inlet
- Battery switches (1) accessory and (2) engines (1) optional generator
- Battery auto charging relays (ACR's)
- Batteries: (2) engine (1) accessory (1) Optional generator (2) optional bow &, stern thruster
- Electronic battery chargers: (1) Accessory battery and engine batteries. (1) Optional generator &, thruster
- Single 110V 30 amp dockside electrical with 50' cord
- High bilge water alarm
- Distribution panel: 110V AC with circuit breakers and voltmeter / amp meter
- Distribution panel: 12V DC with circuit breakers and voltmeter
- Zinc's: Sacrificial (1) Primary (2) trim tabs (2) propeller shafts
- Ground bonding system

### **Fresh Water & Holding System**

- Water system: pressure-demand (hot/cold)
- Water heater: 6-gallon
- Dockside water inlet (pressurized)

- Fresh Water Wash Down – Single outlet in transom storage

## **Safety & Navigation**

- Two Blowers for forced air ventilation – Engine compartment
- Fire extinguisher system – automatic HFC 227
- Bilge pumps: Two 1,500 gal. (5678 L) per hour automatic bilge pumps are installed, each with a manual on/off switch at the helm. A float switch for the high bilge water alarm is installed in the engine compartment and forward bilge.
- Bilge ventilation: Four ventilator blowers are installed in the engine compartment. Each blower creates 240 CFM volume.
- CO alarms: Monitors with alarms are installed in both staterooms and the salon.
- Engine alarms: Engine oil pressure and water temperature alarms are installed at the helm.
- Fire suppression System: An FE241 Fireboy® automatic fire suppression system is installed in the engine compartment
- Compass: 2.75" flush mount, illuminated Richie® Navigator compass is mounted at the helm
- Seacocks: Marine grade bronze seacocks are used on all below the waterline through hull openings. Nylon fittings are used on above the waterline outlets
- Spotlight: ITT Jabsco® remote control spotlight mounted on bow rail

## **Cockpit/Transom/Swim Deck**

- Self bailing
- Door: sliding 3 panel, locking
- Courtesy lights – 4
- Lighting: overhead in bridge overhang – 4
- Molded steps: access to side decks
- Cockpit Hatch (1): Engine room access, hinged, gas shock
- Transom storage locker
- Storage under cockpit seats
- Cockpit floor: Removable for engine access
- Engine room lights
- Cockpit seat: L-shaped lounge port
- Cockpit seat: Aft section of backrest folds flat to create a sun pad

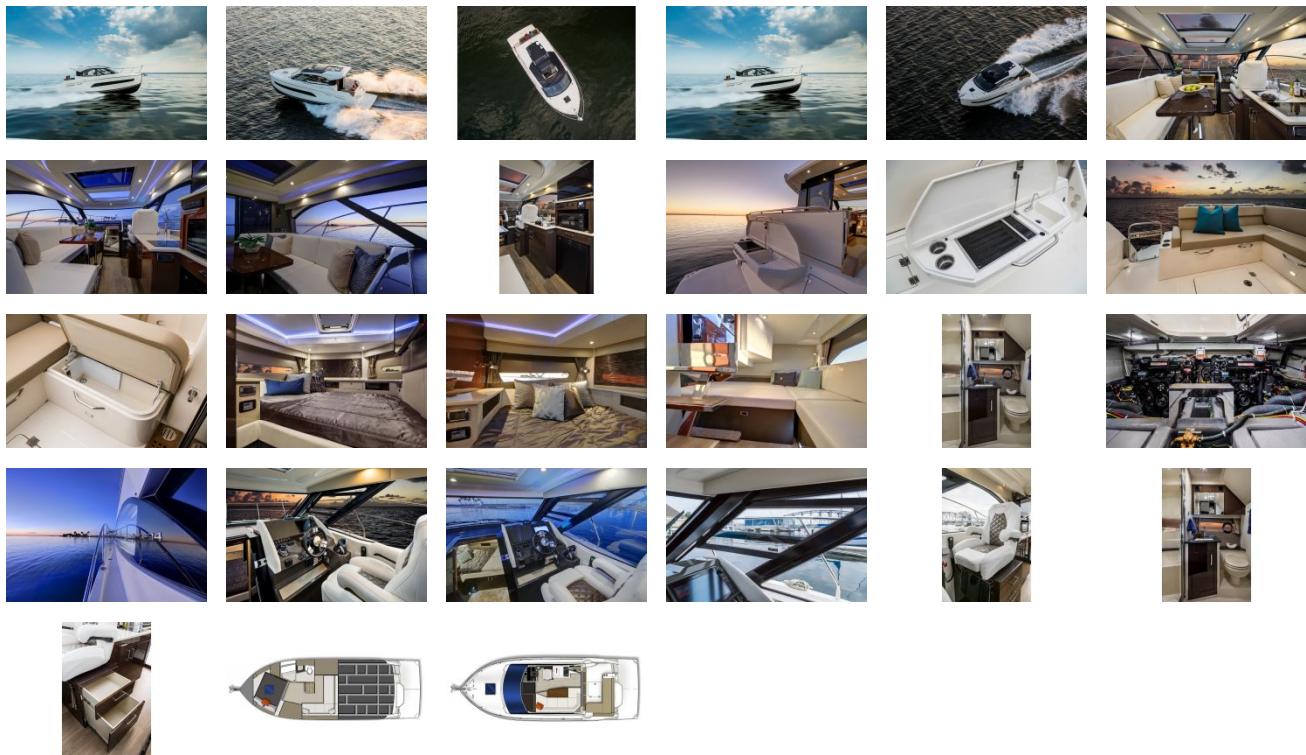
## **Galley**

- Drawers: 4
- Stowage cabinet: 4
- Flooring: Vinyl plank
- Countertop: Solid surface
- Under-mount sink with cover: stainless steel with decorator faucet
- Two burner Ceran cook top
- Refrigerator: Dometic
- 110V outlet: 1, ground fault protected
- Powered exhaust vent
- Lights: overhead
- Microwave
- Slide out trash below the sink
- Storage drawer in port seat base

## **Guest Stateroom & Aft Lounge**

- 'L' shaped sofa – convertible to full size berth
- DC panel – overhead
- (2) 110V outlets, ground fault protected
- CO detector
- Lights: 2 reading
- Lights: 4 LED overhead
- Fixed hull glass window, window blinds w/opening port
- Additional dry storage on starboard side at foot of berth
- Storage: Port and aft overhead

GALLERY



**Jefferson Beach Yacht Sales**  
24400 Jefferson Avenue,  
St. Clair Shores, MI 48080  
Phone: 866-490-5297