



Jefferson Beach Yacht Sales
24400 Jefferson Avenue,
St. Clair Shores, MI 48080
Phone: 866-490-5297

Carver C37 Coupe

Boat Type: Motor Yacht



OVERVIEW

LIVE THE CRUISING LIFE WITH FLAIR

Within her sleek lines and flawless profile, the C37 Coupe holds a treasure: an unmatched level of comfort that will make her your true home-away-from-home. Aboard this two-deck yacht, you'll find a thoughtfully designed galley, an airy salon filled with natural light, two spacious staterooms with impressive amenities and abundant seating, and a remarkable 6-feet, 5-inches of headroom. Once you open the salon's dual doors, the helm, salon, and galley become part of one, single-level, indoor/outdoor living space for entertaining, relaxing, and simply enjoying life on the water.

The C37 is more than a cruising yacht, she's also a performer. Her standard twin MerCruiser 377 Magnum Bravo Three, SeaCore stern-drive engines ensure an exhilarating top speed, while her plaining hull with its 13-foot beam delivers a stable, smooth, and dry ride for all aboard. This is where on-water comfort meets cruising thrills, with a little extra flair.

SPECIFICATIONS

Basic Information

Manufacturer:	Carver	Boat Type:	Motor Yacht
Model:	C37 Coupe	Hull Material:	Fiberglass
Hull Type:		Category:	Power

Dimensions & Weight

Length:	37.00 ft	Draft - max:	3 ft 2 in - 0.97 meter
LOA:	37 ft 8 in - 11.48 meter	Bridge Clearance:	10 ft 6 in - 3.2 meter
Beam:	13 ft - 3.96 meter	Dry Weight:	18000 ft
Deadrise Aft:	20.00 °		

Tank Capacities

Fuel Tank:	250 gallons - 1 tank(s)	Holding Tank:	40 gallons - 1 tank(s)
Fresh Water Tank:	110 gallons - 1 tank(s)		

Accommodations

Total Cabins:	2	Crew Cabins:	-
Total Berths:	-	Crew Berths:	-
Total Sleeps:	6	Crew Sleeps:	-
Total Heads:	1	Crew Heads:	-
Captains Cabin:	No		

FEATURES

STANDARD FEATURES

Construction

- CE Class B
- 10-year structural hull limited warranty
- Hull and Deck: Hand-laid structural and non-structural fiberglass and core laminates bonded with infused resin
- Hull bottom: Surface beneath the water line is bead blasted to create an optimal bonding surface for the anti-fouling paint which is sprayed onto the hull to create a smooth running bottom
- Stringer System: Fiberglass stringers are used throughout the yacht, Interior bulkheads, cabinets and drawers are precision cut, hand-crafted and constructed from a selection of woods and high-pressure laminates. Drawers are lined with laminate
- Insulation, thermal and acoustical
- Meets or exceeds all applicable U.S. Coast Guard safety standards
- NMMA certified
- CE certified available

Propulsion

- Twin Mercruiser 6.2L 350HP - Sea Core - B3 Stern Drives
- Engine alarm system
- Stainless Steel propellers - stern drives
- Trim Tabs: Bennett Marine® stainless steel, electro-hydraulic trim tabs
- Steering: Teleflex® SeaStar hydraulic steering
- Helm Display: Digital LCD display showing tachometer, hour meter, oil pressure, coolant temperature, battery voltage, fuel tank level and rudder angle indicator

Decks & Hardware

- Gunwale Trim: Rigid vinyl with stainless steel insert
- Cleats: (2) 10" bow cleats (2) 10" spring line cleats and (4) 10" stern cleats (1) 10" anchor cleat
- Hatch: Bow, translucent, opening with screen
- Deck fitting: fuel fill (1)
- Deck fitting: fresh water fill (1)
- Deck fitting: waste, pump out (1)
- Rails: bow, 1" stainless steel top rail, 1" stanchions, welded, with stainless secondary rail
- Grab rails: stainless steel
- Engine compartment power and static ventilation located in superstructure
- Transom platform: Fixed
- Swim ladder: under mount, centerline of swim platform w/recessed grab handle
- Nonskid fiberglass decks
- Vinyl ester barrier coat
- Anti-fouling bottom paint
- Bronze seacock - all underwater through hulls - double SS hose clamps
- Nylon thru-hull fittings with Stainless Steel Caps - above waterline applications
- Standard white gel coat for hull & deck
- Black vinyl boot stripe

Helm

- Single helm seat
- Dash console, non-glare
- Engine controls: Engine manufacturer electronic
- Trim tab control
- Steering: hydraulic
- Engine instrumentation: Engine manufacturer LCD display
- Compass: Ritchie, 5" flush mounted, illuminated
- Steering wheel: Sport
- Accessory outlet, 12V (1)
- Dual USB charger outlet
- Provisions for optional navigation electronics package

Salon

- Lights: overhead, 12V, 8 overhead, stainless steel
- Entertainment center: LED/LCD TV - 32"
- Flooring: Wood

- CO detector
- Elevated port sofa
- Opening window - starboard
- Electrical panels: AC installed in seat base
- Salon table: Hi-lo table pedestal
- Sliding door to cabin access, black acrylic, lockable, slides behind helm in open position
- Dash: Upholstered panels

Forward Stateroom

- Sleeping queen-sized berth, storage below
- Shelves: Hull sides
- Deck hatch: White translucent, opening with screen
- Lights: 5 overhead, LED
- Lights: 2 reading
- Lights: Rope light in upper soffit
- Storage: Port hanging locker
- Storage: Foreward starbord alongside berth
- (2) 110V outlets, ground fault protected
- Fixed hull glass window, window blinds
- CO detector

Head

- Door: Locking.
- Lights: (1) in shower overhead (3) in head compartment overhead
- Enclosed shower: Molded fiberglass floor liner, plexi door
- Vanity cabinet: Solid surface countertop and vessel sink, storage below
- Mirror: Above vanity, wood framed/storage
- Exhaust fan
- Electric head (fresh water flush)
- Towel bar
- Toilet paper holder
- 110V outlet, ground fault protected.
- Fixed hull glass window with opening port

Electrical

- Horn, 12V single trumpet.
- Lighting fixtures, 12V LED (14).
- Navigation lights (USCG/COL REG approved).
- CATV inlet.
- Battery switches on/off (1) accessory, (2) engines, (1) optional generator, (1) optional thruster.
- Digital charge distribution system.
- Batteries: (2) engine, (1) accessory, (1) optional generator, (1) optional bow thruster.
- Digital Electronic Battery Chargers: (1) accessory and engine batteries, (1) optional generator and thruster batteries.
- Single AC 30 amp dockside electrical service with 50ft cord.
- Distribution Panel: AC, with circuit breakers and voltmeter/ammeter.

- Distribution Panel: 12V DC, with circuit breakers.
- Zinc's: Sacrificial (1) primary (2) trim tabs (2) propeller shafts.
- Ground bonding system.
- High bilge water alarm.

Fresh Water & Holding System

- Fresh Water System: 90 gal. (341 ;) polyethylene tank with shore water connection and integrated pressure reduction valve.
- Fresh water fill fitting installed on walkway. Eleven gal. (41.6 L) water heater installed in engine compartment.
- On demand fresh water is delivered via a fresh water pump installed in the engine compartment.

Safety & Navigation

- Bilge Pumps: Two 1,500 gal. (5678 L) per hour automatic bilge pumps are installed, each with a manual on/off switch at the helm. A float switch for the high bilge water alarm is installed in the engine compartment and forward bilge.
- Bilge Ventilation: Four ventilator blowers are installed in the engine compartment. Each blower creates 240 CFM volume.
- CO Alarms: Monitors with alarms are installed in both staterooms and the salon.
- Engine Alarms: Engine oil pressure and water temperature alarms are installed at the helm.
- Fire Suppression System: An FE241 Fireboy® automatic fire suppression system is installed in the C43's engine compartment.
- Compass: 2.75" flush mount, illuminated Richie® Navigator compass is mounted at the helm.
- Seacocks: Marine grade bronze seacocks are used on all below the waterline thru hull openings. Nylon fittings are used on above the waterline outlets.
- Spotlight: ITT Jabsco® remote control spotlight mounted on bow rail.

Cockpit/Transom/Swim Deck

- Self-bailing cockpit.
- Door: Hinged cabin entry, locking, black painted, flat glass.
- Courtesy lights (4).
- Lighting: Overhead in bridge overhang (4).
- Molded Steps: Access to side decks.
- Cockpit Hatch (1): Engine room access, hinged, gas shock.
- Cockpit Floor Storage (1): Storage box.
- Transom Door: Transom storage locker with dockside connections and shower option. Accessible through cockpit seating or aft transom doors.
- Cockpit Floor: Removable for engine or generator extraction.
- Cockpit Seat: L-shaped lounge port single seat starboard.
- Switch panel for exterior lighting.
- Engine room lights. Optional underwater lights. Optional sun shade.

Galley

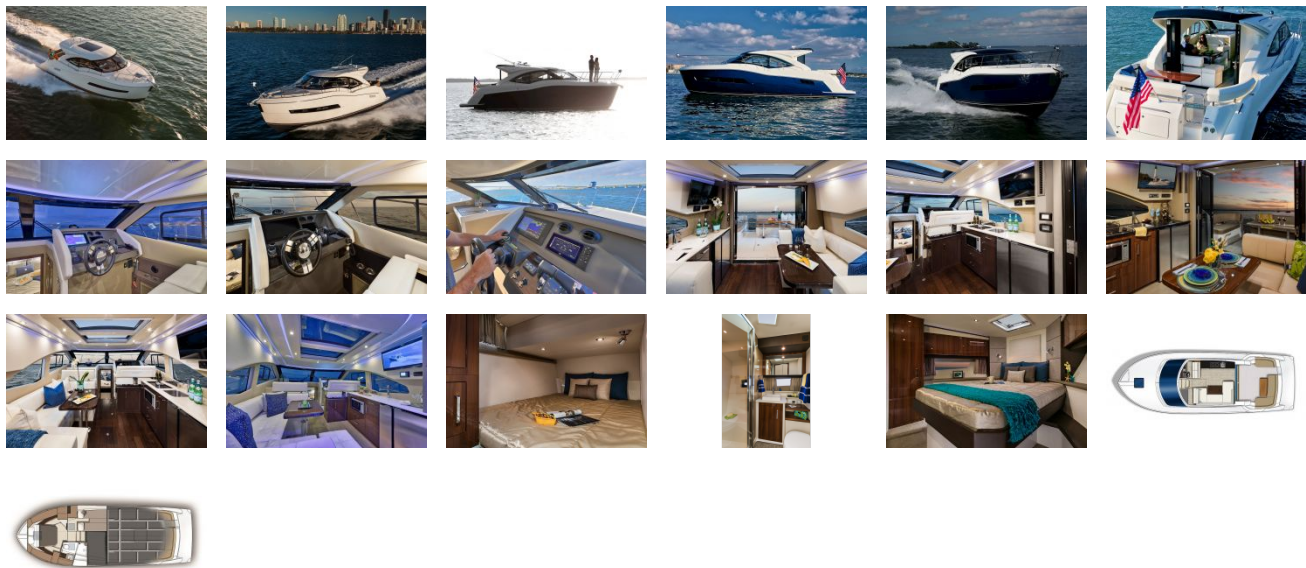
- Drawers (4).

- Storage cabinet (4).
- Flooring: Vinyl plank.
- Countertop: Solid surface.
- Sink: Stainless steel with designer faucet.
- Stove: Two burner Ceran® cook top.
- Refrigerator: Nova Cool®, Norcold®.
- AC Electrical Outlets: Two, ground fault protected.
- Lights: Overhead.
- Microwave: Convection.
- Coffeemaker storage.
- Slide-out trash below the sink.
- Access hatches to (2) in-floor storage areas.

Guest Stateroom

- Hanging Locker: Outboard, mirrored, illuminated, full cabin height., (2) AC electrical outlets, ground fault protected.
- CO detector.
- Door: Locking.
- Lights: Three LED overhead.
- Bed: Twins convert to queen with filler cushion.
- Hull windows with blinds.

GALLERY



Jefferson Beach Yacht Sales
24400 Jefferson Avenue,
St. Clair Shores, MI 48080
Phone: 866-490-5297