



Jefferson Beach Yacht Sales
24400 Jefferson Avenue,
St. Clair Shores, MI 48080
Phone: 866-490-5297

Carver C43 Coupe

Boat Type: Motor Yacht



OVERVIEW

WHAT DESIGN INNOVATION LOOKS LIKE

The C43 Coupe boasts a broad, single-level salon with 6-feet, 8-inches of headroom, which becomes part of a seamless indoor/outdoor living space when the glass cockpit doors are open. It also features two spacious staterooms, each with 6-feet, 6-inches of headroom, a well-appointed galley, a private owner's head with separate stall shower, and a separate day-guest head. There's abundant seating throughout the boat, an expansive swim platform, a retractable electric glass sunroof, and an available retractable sunshade. In addition, wide side-decks provide easy access to the foredeck.

The C43 is much more than her accommodations and unique design elements; however, her hull and deck feature both hand-laid and vacuum-infused structural and nonstructural fiberglass and core laminates for superior strength. Below the waterline, the hull bottom is bead-blasted to ensure optimal bonding with the sprayed-on, anti-fouling paint, which creates an exceptionally smooth running surface. Carver also incorporates fiberglass stringers for structural integrity and better performance, while its unique vacuum-bagging technology reduces unnecessary weight.

SPECIFICATIONS

Basic Information

Manufacturer:	Carver	Boat Type:	Motor Yacht
Model:	C43 Coupe	Hull Material:	Fiberglass
Hull Type:		Category:	Power

Dimensions & Weight

Length:	43.00 ft	Draft - max:	3 ft 7 in - 1.09 meter
LOA:	42 ft - 12.8 meter	Bridge Clearance:	10 ft 10 in - 3.3 meter
Beam:	13 ft 10 in - 4.22 meter	Dry Weight:	24150 ft
Deadrise Aft:	-		

Tank Capacities

Fuel Tank:	342 gallons - 1 tank(s)	Holding Tank:	70 gallons - 1 tank(s)
Fresh Water Tank:	131 gallons - 1 tank(s)		

Accommodations

Total Cabins:	2	Crew Cabins:	-
Total Berths:	-	Crew Berths:	-
Total Sleeps:	6	Crew Sleeps:	-
Total Heads:	2	Crew Heads:	-
Captains Cabin:	No		

FEATURES

Standard Features

Construction

- Hull and Deck: Hand-laid structural and non-structural fiberglass and core laminates bonded with infused resin.
- Hull bottom: Surface beneath the water line is bead blasted to create an optimal bonding surface for the anti-fouling paint which is sprayed onto the hull to create a smooth running bottom.
- Stringer System: Fiberglass stringers are used throughout the yacht.
- Interior bulkheads, cabinets and drawers are precision cut, hand crafted and constructed from a selection of woods and high-pressure laminates.
- Drawers are lined with laminate.
- Integral aluminum truss reinforcement in cabin top structure.

Propulsion

- Engines: Twin Cummins 6.7 L, 380 HP diesel inboard engines with direct coupled v-drives. Each engine's exhaust is routed to a Hydralift muffler and underwater exhaust port.

- Shafts and Shaft Logs: 1.75" (3.8 cm) diameter stainless steel propeller shafts. Tides Marine® SureSeal shaft logs are self-aligning, dripless and maintenance free. Sacrificial anodes are installed on each shaft.
- Rudders and Propeller Struts: Made from durable 421 Manganese bronze.
- Propellers: Nibral CNC propellers.
- Fuel Tanks: Twin, 5052 aluminum tanks hold 175 gal. (662.4 L) of fuel each. Port and starboard fuel fill deck fittings.
- Trim Tabs: Bennett Marine® stainless steel, electro-hydraulic trim tabs.
- Steering: Teleflex® SeaStar hydraulic steering.
- Helm Display: Digital LCD display showing tachometer, hour meter, oil pressure, coolant temperature, battery voltage, fuel tank level and rudder angle indicator.

Decks & Hardware

- Rails: 1" (2.5 cm) 316 stainless steel rails are used throughout the vessel. Rail stanchion bases are secured using aluminum backing plates laminated into the deck's fiberglass layup.
- Mooring Cleats: 10" (25 cm) mooring cleats are used at the bow, stern and amid ship (total of nine cleats). Cleats are secured using aluminum backing plated fused into the vessel's laminate.
- Foredeck Access: Wide walkways are on each side of the cabin top and provide safe, secure access from the cockpit to the foredeck.
- Foredeck Hatch with screen.

Helm

- Bench helm seat, adjustable electrical controls.
- Compass.
- Sport steering wheel.
- 12V accessory outlet.
- Provisions for optional navigation equipment.
- Windshield defogging fans.
- Dual speed controlled/intermittent windshield wipers and washers.
- 12V switch control panel.
- Remote control spotlight.
- Hydraulic steering with tilt steering wheel.
- Dash console, non-glare.
- Electronic engine controls.
- Trim Tab controls.
- LCD engine information display.

Salon

- Entertainment: 32" LED Television, Blu-Ray/CD player, AM/FM marine quality stereo with speakers.
- Lighting: LED lights are recessed into the salon head liner and are controlled by a rocker switch.
- Seating: U-shaped upholstered lounge with storage underneath seating. High/Low dining table with filler cushion.
- Ventilation: Salon windows slide open.
- Storage: Hinged door in salon floor provides access to spacious storage compartment.
- Flooring: Plush pile, 100% nylon carpeting throughout salon.
- CO Detector.
- Retractable sunroof with shade and screen.

Master Stateroom

- Sleeping: Queen size, island berth with high-density foam mattress.
- Dual end tables and halogen scone style reading lights.
- Privacy: Master stateroom is secured with a hinged wooden door and locking door latch.
- Storage: Port and starboard overhead lockers. Port and starboard hanging lockers.
- CO detector.
- Ventilation: Opening overhead hatch with screen and egress ladder.
- Lighting: Natural light provided by overhead hatch and two 5.5" by 36" hull side windows with blinds. Additional illumination provided by 2V lights recessed in the headliner and controlled by a rocker switch and two scone reading lights.
- Flooring: Plush pile 100% nylon carpeting throughout

Master Head Compartment

- Shower: Fiberglass stall shower with hinged aluminum and acrylic door. Shower head can be used as a hand shower. Sump drain w/automatic pump. Exhaust fan. LED overhead light. Molded non-skid floor
- Toilet: electric pedestal toilet with freshwater flush.
- Two 7.5" by 20" hull side windows with opening port lights with shades.
- Vanity: equipped with vessel sink, under sink storage, solid surface counter top, mirrored cabinet.
- Lighting: LED lights recessed in the headliner and controlled by wall mounted rocker switch.
- Electrical: 110V GFI protected outlet.

Electrical

- 12V System: Powered by an array of Series 31, 12V batteries. Array includes two dedicated engine starting batteries and one dedicated "house" battery. Battery banks are charged by a 60 amp charger for each bank. System voltmeters are located on the ship's 12V distribution panel and voltmeters at the helm station. Battery on/off switch for the house battery is installed in the salon and the selector switch for engine batteries is located in the engine compartment.
- 110V System: System consists of a 30-amp service supported by Marincor® 50' (15.2 m) shore power cord. Ground fault circuit interrupters are incorporated into the onboard system.
- Television: Cable television is supported by onboard inlets in the salon and master stateroom and a 50' (15.2 m) CATV cable to connect to shore outlet.

Fresh Water & Holding Systems

- Fresh Water System: Three 40 gal. (151.4 L) polyethylene tank with shore water connection and integrated pressure reduction valve.
- Fresh water fill fitting installed on walkway. Eleven gal. (41.6 L) water heater installed in engine compartment.
- On demand fresh water is delivered via a fresh water pump installed in the engine compartment.

Safety & Navigation

- Bilge Pumps: Two 1,500 gal. (5678 L) per hour automatic bilge pumps are installed, each with a manual on/off switch at the helm. A float switch for the high bilge water alarm is installed in the engine compartment and forward bilge.
- Bilge Ventilation: Four ventilator blowers are installed in the engine compartment. Each blower creates 240 CFM

volume.

- CO Alarms: Monitors with alarms are installed in both staterooms and the salon.
- Engine Alarms: Engine oil pressure and water temperature alarms are installed at the helm.
- Fire Suppression System: An FE241 Fireboy® automatic fire suppression system is installed in the C43's engine compartment.
- Compass: 2.75" flush mount, illuminated Richie® Navigator compass is mounted at the helm.
- Seacocks: Marine grade bronze seacocks are used on all below the waterline thru hull openings. Nylon fittings are used on above the waterline outlets.
- Spotlight: ITT Jabsco® remote control spotlight mounted on bow rail.

Cockpit/Transform/Swim Deck

- Swim Platform: Integrated into the yacht's hull and deck. Access to the cockpit from the swim platform is through a transom door on the starboard side of the yacht. Telescoping boarding ladder is installed in recessed area of swim platform.
- Transom: Stainless steel handrail on top of transom. Two storage lockers in aft surface of transom.
- Engine Compartment Access: Hinged cockpit floor hatch with gas shock cylinder.
- Courtesy Lights: Four cockpit courtesy lights with on/off switch.
- Two storage lockers, port and starboard side.
- Storage access under all cockpit seating.
- Shore water connection.
- Dual stereo speakers.
- Overhead LED lights.
- Cockpit Lounge: L-shaped lounge seat to port with single seat on starboard.

Galley

- Counter Tops: Solid surface countertops throughout.
- Flooring: Vinyl plank flooring.
- Appliances: Novacool® refrigerator, convection microwave oven, two burner electric cooktop with ventilator.
- Sink: Full-size stainless steel sink.
- Lighting: Recessed LED lights over galley counter controlled by rocker light switch.
- 110 Outlet: GFI protected 110V outlet.

Guest Stateroom

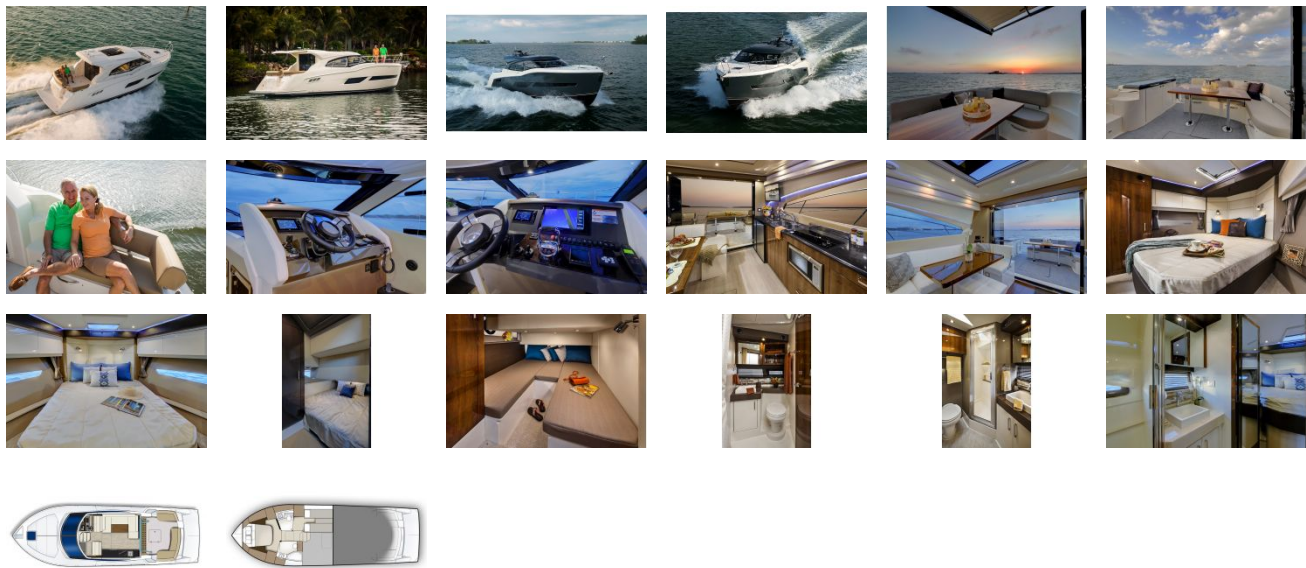
- Sleeping: Twin berths with high-density foam mattresses. Filler cushion converts twin berths to full size mattress.
- Flooring: Plush pile 100% nylon carpeting throughout.
- Privacy: Guest Stateroom is secured with a hinged wooden door and locking door latch.
- Lighting: Illumination is provided by recessed overhead LED lights controlled by a rocker switch. Two bedside reading lights. Natural light and ventilation provided by one 11" hull side window with opening portlight.
- Hanging locker with illumination and mirror.

Day Head

- Shower: Hand held shower with curtain. Sump drain with automatic pump. Exhaust fan. LED overhead light. Molded non-skid floor.
- Toilet: Raritan® electric pedestal toilet with freshwater flush.

- Two 7.5" by 20" hull side windows with opening port lights with shades.
- Vanity: Vanity is equipped with vessel sink, under sink storage, solid surface counter top, mirrored cabinet.
- Lighting: LED lights recessed in the headliner and controlled by wall mounted rocker switch.
- Electrical: 110V GFI protected outlet.

GALLERY



Jefferson Beach Yacht Sales
24400 Jefferson Avenue,
St. Clair Shores, MI 48080
Phone: 866-490-5297