



Jefferson Beach Yacht Sales
24400 Jefferson Avenue,
St. Clair Shores, MI 48080
Phone: 866-490-5297

Carver C52 Command Bridge

Boat Type: Motor Yacht



OVERVIEW

OUR MOST SPACIOUS AND LUXURIOUS CARVER

The new Carver 52 Command Bridge offers three staterooms and two heads in one of the most spacious layouts of any boat in its class. Owners will enjoy its large, open-concept cockpit with fully opening glass doors. The flush threshold leading to the spacious salon with wide side decks offers easy access to the large foredeck seating area. Unique design elements include, a full-beam master stateroom with private entrance and a master head with a large stall shower. Two additional staterooms, a second head with a stall shower, a large aft galley, and a host of well-thought-out amenities. From bridge to salon, make this one of the most exciting new model introductions in Carver history.

SPECIFICATIONS

Basic Information

Manufacturer:	Carver	Boat Type:	Motor Yacht
Model:	C52 Command Bridge	Hull Material:	Fiberglass
Hull Type:		Category:	Power

Dimensions & Weight

Length:	52.00 ft	Draft - max:	4 ft - 1.22 meter
LOA:	51 ft 10 in - 15.8 meter	Bridge Clearance:	-
Beam:	15 ft 8 in - 4.78 meter	Dry Weight:	42000 ft
Deadrise Aft:	-		

Tank Capacities

Fuel Tank:	550 gallons - 1 tank(s)	Holding Tank:	80 gallons - 1 tank(s)
Fresh Water Tank:	150 gallons - 1 tank(s)		

Accommodations

Total Cabins:	3	Crew Cabins:	1
Total Berths:	-	Crew Berths:	-
Total Sleeps:	6	Crew Sleeps:	-
Total Heads:	2	Crew Heads:	1
Captains Cabin:	No		

FEATURES

STANDARD FEATURES

Construction

- 10-year structural hull limited warranty
- Carpeting, exterior: 100% polypropylene solution dyed, stain and fade resistant
- Vinyl: expanded back, heavy-duty marine grade
- Electrical system: color coded tinned copper conductors
- Fiberglass: combination of vacuum infused and hand-laid
- Fiberglass hat section stringer system
- Insulation: thermal and acoustical
- Meets or exceeds all applicable U.S. Coast Guard safety standards
- NMMA certified
- CE certification available

Propulsion

- Engine alarm system
- Racor fuel filters

- 24V starting system
- Internal seawater strainers
- Steering: Hydraulic Power Assist

Hardware & Equipment Plumbing

- Bilge pumps: (3), 2000 gph, manual and automatic, (1) 900 gph automatic
- Water system: pressure-demand (hot/cold) with accumulator tank and charcoal filter
- Water heater: 20-gallon
- Dockside water inlet (pressurized)

Cockpit & Swim Platform

- Salon / Cockpit Door – Painted Aluminum Frame hinged door with bi-fold Aft cockpit seat, hatch for crew quarter access
- Courtesy lights: floor illumination, 9 (white LED) Lighting: overhead, 4, polished chrome rings (white LED)
- Molded stair access to side decks, port and starboard w/ stainless steel hand rail
- Hatch: engine room access
- Transom “hinged gate”, starboard
- Storage: Port aft of salon door, under starboard side deck step areas, fiberglass door and interior closeout.
- Storage: aft port and starboard storage tub under cockpit seat
- Storage: aft port and starboard on transom outboard of walkway, fiberglass door and interior close out.
- Storage, Transom: port and starboard compartments. Shore power hookup on stbd side. Wash downs on port side.
- Storage, Transom: Large centerline storage tub with access from transom or through the cockpit seat
- 2 Co Axial stereo speakers

Upper Helm

- Accessory outlets (1) - 12V
- Helm seat: Pedestal, adjustable, high-quality elegant upholstery
- Custom tilt steering wheel with Carver Logo
- Beverage holders (2) – stainless steel
- Instrumentation: 7” Color LCD Digital
- Engine Display
- Provisions for mounting full electronics – 2 ea.
- 12” Ray Marine A Series Displays
- Flush Mount Compass
- Spotlight control
- Start/stop panels (1)
- Trim tab controls with position indicator
- Cummins Electronic Engine Controls
- Venturi Windshield: tinted, wraparound, painted
- Aluminum frame, 8” clear plexi air deflector fwd

VIP Stateroom

- Door: access to stateroom, locking

- Berth: island, queen sized bed with pillow top innerspring mattress
- Lights: 5 LED overhead, dimmer
- Lights: Rope accent in soffit
- Lights: 2 reading
- Lights: 1 table lamp
- Shelves: hull sides
- Storage: Hanging locker stbd, drawer storage below
- Storage: outbd lower storage both port and stbd
- Storage: Port storage (2)
- (2) 110V outlets, ground fault protected
- Deck hatch: with integrated escape ladder
- Fixed hull windows (2), window blinds
- CO Detector

Master Head

- Door: locking
- Lights: 2 LED in shower overhead
- 4 LED in head compartment overhead
- Enclosed shower: molded fiberglass floor liner, glass blkhd and frameless glass entry door with tile accent and teak seat
- Vanity cabinet: Solid surface countertop and vessel sink, storage below
- Upper vanity upper storage
- Mirror: Above vanity
- Exhaust fan
- Tecma Ez Fit heads (fresh water flush)
- Towel bars
- Robe hook
- Toilet paper holder
- 110V outlet, ground fault protected
- Fixed hull windows w/ opening port lights (1), window blinds
- Tile floor

Foyer

- Lights: 1 LED in overhead

Galley

- Port Aft Galley with Solid surface countertop
- Storage: Overhead, high gloss white lacquer cabinetry
- Drawers: 4
- Stowage cabinet: 4
- Flooring: hardwood
- Sink: Under mount stainless steel with decorator faucet
- Stove: Two burner Ceran cook top
- Refrigerator: NovaKool 7500, 7.5 cu. Ft. refer, 2 cu ft freezer
- 110V outlet: 2, ground fault protected
- Lights: overhead (9), LED

- Microwave: Convection, below cook top
- Slide out trash on stbd side below TV
- Additional storage on stbd side below TV

Electrical

- Horn, 12V dual trumpet
- Lighting fixtures, 12V Navigation lights (USCG/COL REG approved)
- Electric Searchlight
- FailSafe shore power Galvanic Isolator
- Surge Guard AC electrical system protector
- Battery switches on/off Electric Remote
- Operation (port engine battery, starboard engine battery, generator battery, accessory battery)
- Batteries: (4) Engine 31 Series, (1) Ship Service 8D series Deep Cycle, (1) generator 24 series OPT - (4) Bow &, Stern thrusters 31 series
- Electronic battery charger – 24volt/30 amps (engine and thruster batteries)
- Electronic battery charger 12 volt 60 amp (accessory and generator battery charger)
- Dockside inlet: Single 240V / 50-amp with 50-ft. cord
- CATV inlet
- Distribution panel: 120/240V AC with circuit breakers, voltmeter and amp meter
- Distribution panel: 12V DC, with circuit breakers, volt meter and amp meter
- Zincs: sacrificial with bonding system and isolator
- High Bilge Water Alarm

Mechanical

- Windshield Wipers – Port and starboard, intermittent and touch wipe (with lower helm option)
- Windshield washer system (with lower helm option)
- Trim tabs: 12x30" Planes
- Fire extinguisher system - automatic FE 227 with Emergency Manual Discharge

Hull & Deck

- Gunwale trim: Stainless steel
- Bow chafe plate: stainless steel
- Cleats w/ Line Chafe Plates: Euro Style
- (2) 12" bow cleats, (2) 12" spring line cleats and (4) 12" stern cleats, (1) 12" anchor cleat
- Hatch: (1) bow, integrated to deck styling
- Deck fitting: fuel fills (2) port and starboard transom location
- Deck fitting: fresh water fill (1) - Stbd side deck
- Deck fitting: waste, pump-out (1) – Stbd side access
- Rails: bow
- 1" stainless steel, welded, top rail and 1" stanchions, custom rail bases with set screw installation
- Grab rails: stainless steel, 1"
- Transom platform: Fixed w/ swim ladder and grab rail
- Windows: forward, tempered safety glass, non-opening, 10mm Grey Glass
- Windows: Upper sides / Mid sides with opening slider, tempered safety glass, 8mm Grey Glass
- Foredeck sun pad: Reclined, drink holders
- Windshield weather cover - color coordinated

- Hull windows: fixed glass with integrated opening ports
- Master Stateroom hull side window: fixed, Grey
- Glass w/ opening port(2)
- Nonskid fiberglass decks (diamond pattern)
- Vinyl ester barrier coat
- Anti-fouling bottom paint
- Bronze sea cocks - all underwater through hulls - double SS hose clamps
- Chrome plated bronze thru hulls above water line.
- Standard Cream Gel Coat for Hull &, Deck
- Exterior Décor Lighting

Bridge

- Beverage holders (8) - stainless steel, 2 at helm, 2 at port companion seat, 4 near aft seating
- Bridge seat, fwd port - forward chaise lounge style cushion
- Bridge seat, aft port
- Bridge Table, aft - teak top, polished stainless steel pedestal, hi/lo, converts to sun pad
- Bridge wet bar - sink and faucet w/ fiberglass cover, storage
- Courtesy lights (8) - LED for floor illumination
- Electronics arch – welded premium grade aluminum painted with AWLCRAFT 2000 acrylic urethane topcoat for use in harsh marine environments
- Safety rail – 1.0" O.D. lineal-buffed 316 stainless steel connecting arch, bridge and sun pad area
- Safety rail stanchions – double-welded (inside &, outside), 316 stainless steel, anchored to aluminum backing plates laminated into deck.
- Self-draining walking surface

Master Stateroom

- Door: private access to stateroom from salon, locking
- Berth: island, queen sized bed with pillow top innerspring mattress
- Lights: 11 LED overhead, dimmer
- Lights: Rope accent lighting on headboard and soffit
- Lights: Rope accent lighting under berth overhang
- Lights: 2 reading
- Lights: 1 table lamp
- Lights: stairwell courtesy
- Storage: Stbd hanging locker w/ drawer storage below (2), upholstered bench outbd
- Drawer storage: port, 2 drawers
- (3) 110V outlets, ground fault protected
- Fixed hull windows w/ opening port lights (2) window blinds
- CO Detector
- Lounge: Port sofa
- Night stands: both sides of berth

Guest Stateroom

- Door: locking
- Lights: 4 LED overhead
- Lights: Courtesy lighting in walkway between berths

- Lights: 2 reading
- Two bunk beds with foam mattresses, access to storage under inboard and outboard berths
- Hanging locker: starboard (1)
- 110V outlets, ground fault protected
- Fixed hull windows w/ opening port, (1), window blinds
- CO detector
- Overhead skylight closeout: Finished metal trim
- Nightstand: Between twin berths, small storage area

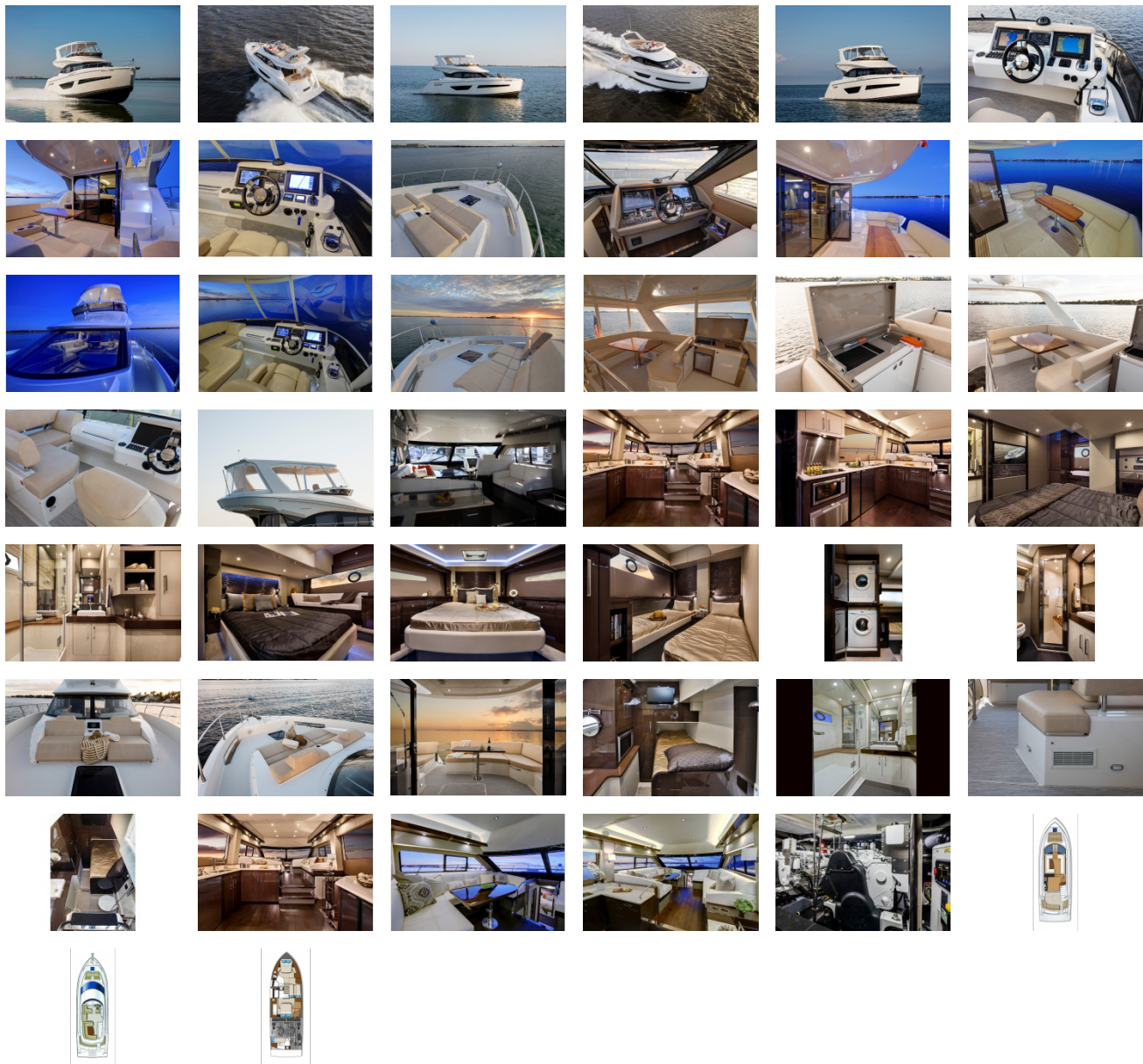
Guest Head

- Door: locking
- Lights: 1 LED in shower overhead
- 4 LED in head compartment overhead
- Enclosed shower: molded, reinforced fiberglass with enclosure, glass shower door, teak seat
- Vanity cabinet: Solid surface countertop and vessel sink, storage below
- Above sink cabinet: mirrored doors
- Exhaust fan
- Tecma Ez Fit head (fresh water flush)
- Towel bars
- Toilet paper holder
- Robe hook
- 110V outlet, ground fault protected
- Fixed hull windows w/ opening port lights (1), window curtain
- Tile floor

Salon

- 8 piece Decorator pillow set
- Coordinated decorator roman style shades
- Lights: overhead, 12V, 14 overhead, LED, brushed stainless steel, dimmer
- Starboard Aft Entertainment center: 40" LED/LCD TV, Blu Ray player
- AM/FM stereo, multi-media player with 4 coaxial speakers in salon, 2 in cockpit with amplifier
- Dark wood engineered hardwood flooring
- CO detector
- Color coordinated port and stbd sofa
- Stbd end table w/ lamp
- Opening window – port and starboard
- Salon table: Wood with stainless pedestal, hi/lo with filler

GALLERY



Jefferson Beach Yacht Sales
24400 Jefferson Avenue,
St. Clair Shores, MI 48080
Phone: 866-490-5297