

# Rinker 290EX

Boat Type: Cruiser



## OVERVIEW

### 290EX

**For travelers and explorers, the 290EX is a match made in heaven.**

This cruiser is trailerable allowing it to go anywhere you want with convenience. In a league of its own, the 290EX serves as a stylish yet ergonomically designed cruiser capable of sleeping five comfortably in a modern, value-packed cabin.

On deck, the social circle created by the rotating two-person helm seat is a feature that many people love about the 290EX. Preparing refreshments for parties and meals is fun and easy with the fully equipped on-deck and in-cabin galleys.

The 290EX is embellished with beautiful touches such as the [wire brushed hickory hardwood flooring](#), [solid surface countertops](#), and stylish new black appliances. Additional embellishments are also available. Add a grill, extended

hardtop, filler cushions, fundeck sunpad, and a bow thruster. The 290EX is an excellent choice for adventurous travelers.

## SPECIFICATIONS

### Basic Information

Manufacturer:	Rinker	Boat Type:	Cruiser
Model:	290EX	Hull Material:	
Year:	2020	Hull Type:	
Category:	Power		

### Dimensions & Weight

Length:	29.00 ft	Draft - max:	3 ft - 0.91 meter
LOA:	31 ft 10 in - 9.7 meter	Bridge Clearance:	9 ft 11 in - 3.02 meter
Beam:	9 ft - 2.74 meter	Dry Weight:	7640 ft
Deadrise Aft:	18.00 °		

### Tank Capacities

Fuel Tank:	100 gallons - 1 tank(s)	Holding Tank:	27 gallons - 1 tank(s)
Fresh Water Tank:	33 gallons - 1 tank(s)		

### Accommodations

Total Cabins:	-	Crew Cabins:	-
Total Berths:	-	Crew Berths:	-
Total Sleeps:	4	Crew Sleeps:	-
Total Heads:	-	Crew Heads:	-
Captains Cabin:	No		

## FEATURES

### Standards

#### Aft Stateroom

- 110 Volt Outlet
- Mattress – Oversized
- Mattress Cover – Designer Fabrics and Zipper Fitted

#### Cabin

- Cabinetry – Premium
- Door – Locking Cabin
- Flooring – Hardwood
- Port Lights
- Solid Surface – Lids and Surfaces

- Solid Surface Counter Top
- Table – Dinette Area/Converts Into Dual V-Berth
- V-Berth

#### Canvas

- Bimini Top with Boot, Color Coordinated Acrylic
- Camper Enclosure

#### Cockpit

- Blender – Built-In
- Flooring – Snap-In, Chilewich Bamboo
- Cushioned Armrests at Throttle Position
- Integrated Trash Container – Composite, Removable
- Seating – Aft Bench – Full Sized (with convertible sunpad lounger)
- Seating – Helm with Flip-Up Bolster
- Shower – Transom, Pressurized
- Sink with Refreshment Center, Pressurized Water
- Solid Surface – Lids and Surfaces
- Table Cockpit – Stowable

#### Construction

- Cleats – Stainless Steel Fixed
- Deck Access – Walk-Thru with Molded-In steps
- Electric Engine Hatch Lift
- LED Engine Compartment Lighting
- Spotlight – Rail Mounted Remote
- Storage – Transom Trunk
- Storage Under “Rumble” Seat
- Walk-Thru Transom Entrance
- Windshield – Curved with Walk-Thru, Tinted Safety Glass
- Dual Battery System with Switch
- Shore Power – Dual Side Power System

#### Entertainment

- Sirius Satellite Radio
- Speakers – Upgrade
- Stereo – Bluetooth
- Stereo Remote – Transom

#### Fwd. Stateroom

- Port Lights – Opening with Ventilating Screens

#### Galley

- Solid Surface Lids and Galley Tops
- Stove – 1 Burner Alcohol/Electric

#### Head

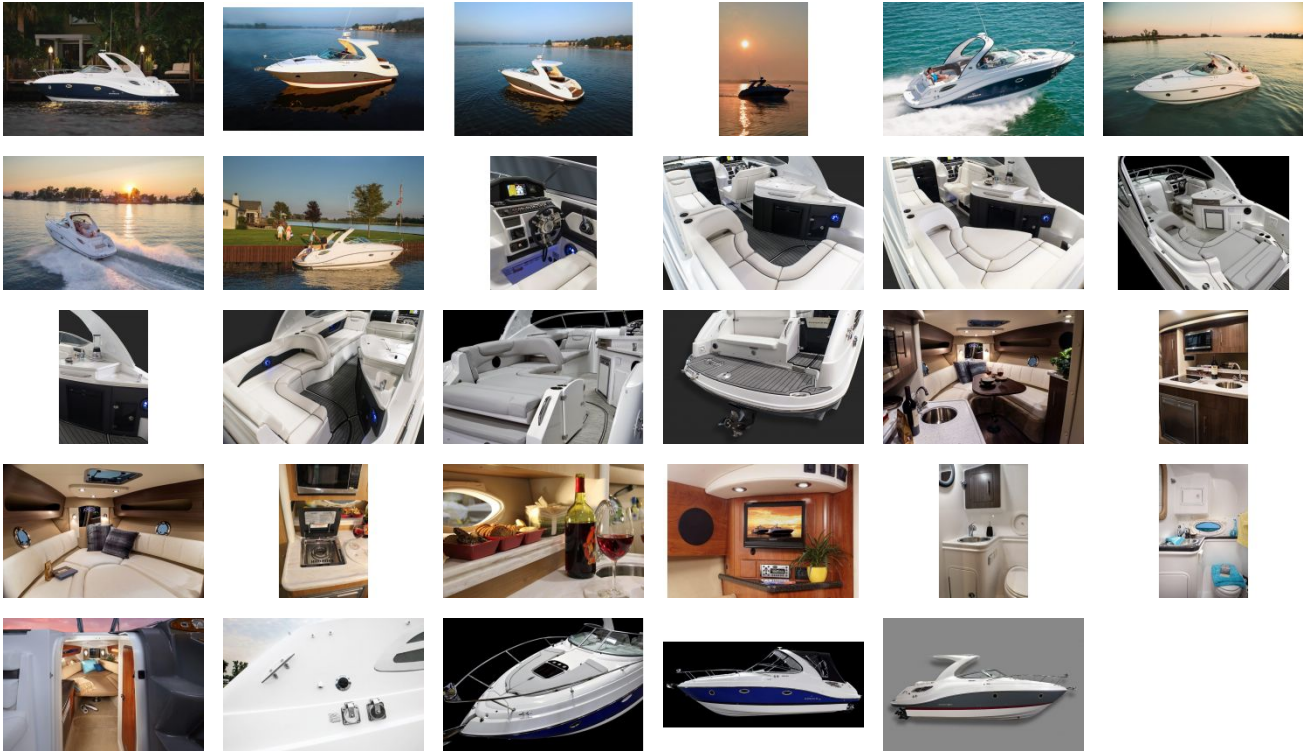
- Holding Tank Odor Filter, “Big Orange”
- Liner, Fiberglass – Gelcoated Finish Throughout

- Solid Surface Counter Top
- Toilet, Pump-Out – Porcelain Toilet with Holding Tank

#### Helm

- Compass
- Digital Depth Gauge
- Steering – Tilt, 5 Position
- Trim Tabs, Controls with LED Indicators
- VHF Radio With Antenna

# GALLERY



**HAWK'S**  **YACHTS**

**Hawks Yachts**  
Liberty Marina  
64 Old South River Rd  
Edgewater MD 21037  
Phone: (888)848-9842