

Rinker 320EX

Boat Type: Cruiser



OVERVIEW

320EX

Designed with comfort, function and performance in mind, the 320 Express Cruiser has the space to comfortably sleep five adults and the power to make it to your destination in good time.

With plenty of space on deck and in-cabin, your guests will feel at home in this feature-packed cruiser. Socializing is made easy by swiveling the helm seat to face the open cockpit. You will enjoy relaxing on deck which is home to a reclining transom lounge seat, a refreshment center equipped with a refrigerator or ice maker, optional electric grill, and a built in blender for any smoothies you may be craving.

The cabin is a perfect place to make yourself at home. The skylight adds natural light and enhances the already generous 6'4" of headroom. The head, complete with storage and mirrors, offers everything you need to dress to impress when going out to dinner at a waterfront restaurant.

The 320EX is the perfect cruiser for entertaining and relaxing.

SPECIFICATIONS

Basic Information

Manufacturer:	Rinker	Boat Type:	Cruiser
Model:	320EX	Hull Material:	
Year:	2020	Hull Type:	
Category:	Power		

Dimensions & Weight

Length:	32.00 ft	Draft - max:	3 ft 2 in - 0.97 meter
LOA:	33 ft 3 in - 10.13 meter	Bridge Clearance:	12 ft 11 in - 3.94 meter
Beam:	10 ft 6 in - 3.2 meter	Dry Weight:	12200 ft
Deadrise Aft:	18.00 °		

Tank Capacities

Fuel Tank:	150 gallons - 1 tank(s)	Holding Tank:	47 gallons - 1 tank(s)
Fresh Water Tank:	33 gallons - 1 tank(s)		

Accommodations

Total Cabins:	-	Crew Cabins:	-
Total Berths:	-	Crew Berths:	-
Total Sleeps:	5	Crew Sleeps:	-
Total Heads:	-	Crew Heads:	-
Captains Cabin:	No		

FEATURES

Standard Features

Aft Stateroom

- Mattress – Custom w/ Memory Form
- Mattress – Oversized
- Mattress Cover – Designer Fabrics and Zipper Fitted
- Storage – Under Berth

Cabin

- Cabinetry – Premium
- Door – Locking Cabin
- Flooring – Hardwood
- Lighting – Large Foredeck Skylight w/ Shade Screen
- Port Lights

- Seating – Couch/Custom, Converts to Berth
- Solid Surface – Lids and Surfaces
- Solid Surface Counter Top
- Table – Dinette/Wood, w/ Designated Storage
- V-Berth

Canvas

- Bimini Top with Boot, Color Coordinated Acrylic
- Camper Enclosure

Cockpit

- Blender – Built-In
- Flooring – Snap-In, Chilewich Bamboo
- Filler Cushions, Aft Cockpit
- Integrated Trash Container – Composite, Removable
- Seating – Aft Bench – Full Sized (with convertible sunpad lounger)
- Seating – Helm with Flip-Up Bolster
- Shower – Transom, Pressurized
- Sink with Refreshment Center, Pressurized Water
- Solid Surface – Lids and Surfaces
- Table Cockpit – Stowable

Construction

- Anchor Windlass – 130' Line, 30' Chain
- Arch – Radar, with Lights, Cabin TV & TV Antenna
- Automatic Fire Extinguishing System
- Cleats – Stainless Steel Fixed
- Deck Access – Walk-Thru with Molded-In steps
- Electric Engine Hatch Lift
- LED Engine Compartment Lighting
- Spotlight – Rail Mounted Remote
- Storage – Transom Trunk
- Storage Under “Rumble” Seat
- Walk-Thru Transom Entrance
- Windshield – Curved with Walk-Thru, Tinted Safety Glass
- Dual Battery System with Switch

Engine Systems

- Fuel Shot-Off Valves

Entertainment

- Flat Screen TV – Main Cabin
- Sirius Satellite Radio
- Speakers – Upgrade
- Stereo – Bluetooth
- Stereo Remote – Transom

Fwd. Stateroom

- Mattress – Custom with Memory Foam

- Mattress Cover – Designer Fabrics and Zipper Fitted
- Pillow Package
- Port Lights – Opening with Ventilating Screens
- Privacy Curtain

Galley

- Solid Surface Lids and Galley Tops
- Stove – 1 Burner Alcohol/Electric

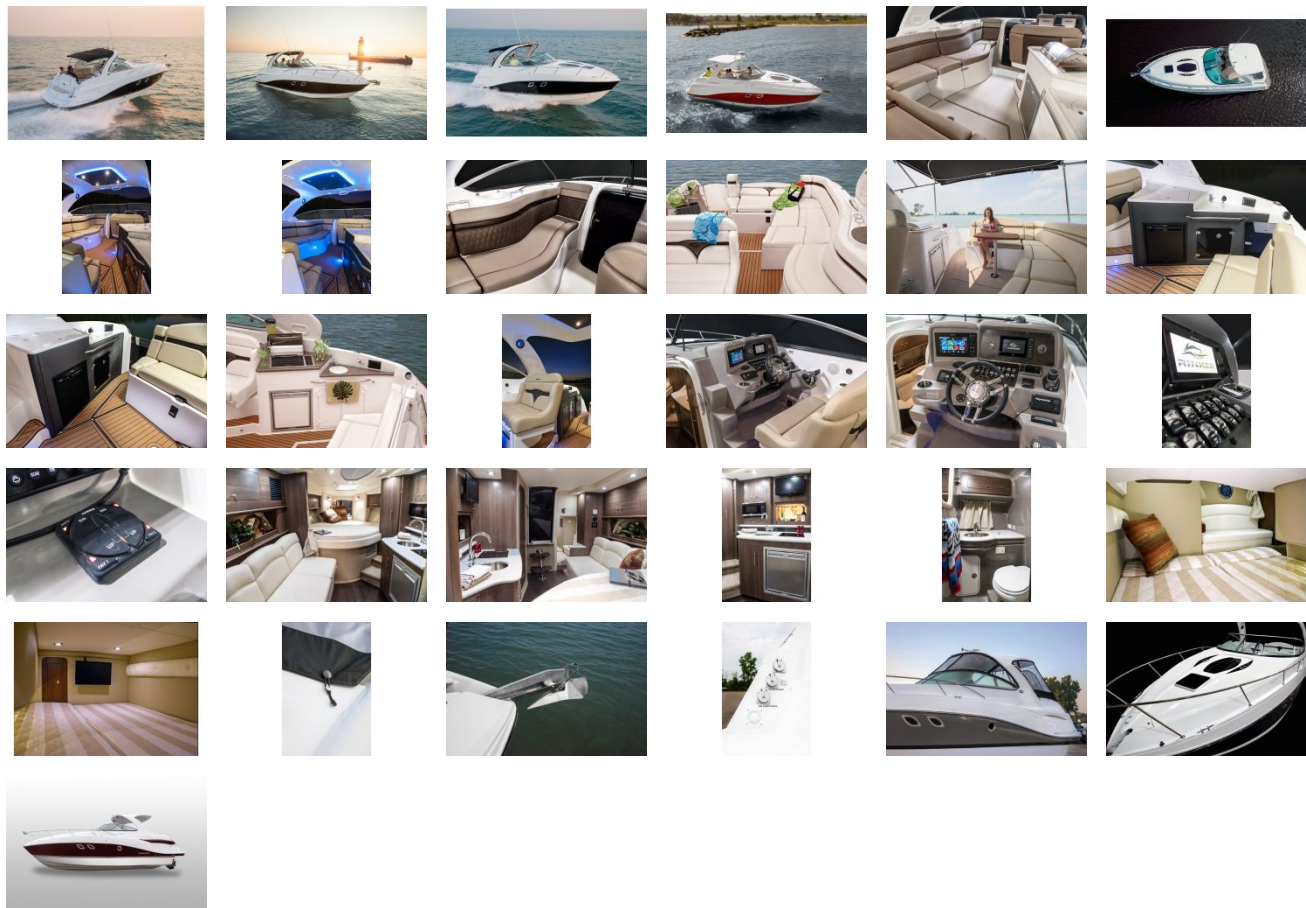
Head

- Holding Tank Odor Filter, “Big Orange”
- Liner, Fiberglass – Gelcoated Finish Throughout
- Solid Surface Counter Top
- Toilet, Pump-Out – Porcelain Toilet with Holding Tank

Helm

- Chartplotter – Raymarine C-95 (Radar Compatible)
- Compass
- Digital Depth Gauge
- Steering – Tilt, 5 Position
- Trim Tabs, Controls with LED Indicators
- VHF Radio With Antenna

GALLERY



HAWK'S  YACHTS

Hawks Yachts
Liberty Marina
64 Old South River Rd
Edgewater MD 21037
Phone: (888)848-9842