

# Rinker 23QX Sterndrive

Boat Type: Bowrider



## OVERVIEW

### 23QX BR

**Launch the 23QX into a primo day of adventure and socializing that you deserve.**

The 23QX offers the most versatility for day boating any way you want. Choose between 250 and 380 horsepower to match your ego and need for speed.

The 23QX transforms to meet needs in the moment. Switch between a full width sunpad, rear lounge, or traffic-friendly path between the cockpit and the swim platform. Add an extended swim platform to maximize your time at the sandbar. Create additional room in the cockpit for extra friends with the simple pop-down side-seat option. Kick up the excitement with a ski/wakeboard tower, can speakers, amplifier, and a 10" subwoofer from [Kicker Audio®](#).

This boat allows you to escape from your busy schedule and work stress. Even if it's just for a day, the 23QX will take you to a place where your personal soundtrack will only be the sound of Mother Nature and you making lasting

memories with family.

SPECIFICATIONS

Basic Information

Manufacturer:	Rinker	Boat Type:	Bowrider
Model:	23QX Sterndrive	Hull Material:	
Year:	2020	Hull Type:	
Category:	Power		

Dimensions & Weight

Length:	23.00 ft	Draft - max:	3 ft - 0.91 meter
LOA:	23 ft 6 in - 7.16 meter	Bridge Clearance:	4 ft 11 in - 1.5 meter
Beam:	8 ft 6 in - 2.59 meter	Dry Weight:	4370 ft
Deadrise Aft:	20.00 °		

Tank Capacities

Fuel Tank:	41 gallons - 1 tank(s)	Holding Tank:	-
Fresh Water Tank:	-		

Accommodations

Total Cabins:	-	Crew Cabins:	-
Total Berths:	-	Crew Berths:	-
Total Sleeps:	-	Crew Sleeps:	-
Total Heads:	-	Crew Heads:	-
Captains Cabin:	No		

FEATURES

Standard Features

Canvas

- Bimini Top with Boot, Color Coordinated Acrylic

Cockpit

- Flooring – Snap-in, Chilewich Bamboo
- Cooler
- Integrated Trash Container – Composite, Removable
- Seating – Dual Bucket Seats with Flip-Up Bolster
- Seating – Helm with Flip-Up Bolster
- Storage – In-Floor/Large
- Storage – Port Side Dash Glove Box
- Table Cockpit – Stowable

## Construction

- Anchor Storage Locker w/ Cradle
- Bow Ladder with Stainless Steel Steps
- Cleats – Stainless Steel Pull-Up
- LED Engine Compartment Lighting
- Ski-Tow – Transom Mounted, Stainless Steel Eye
- Walk-Thru Transom Entrance
- Windshield – Curved with Walk-Thru, Tinted Safety Glass

## Electrical

- Battery Holder

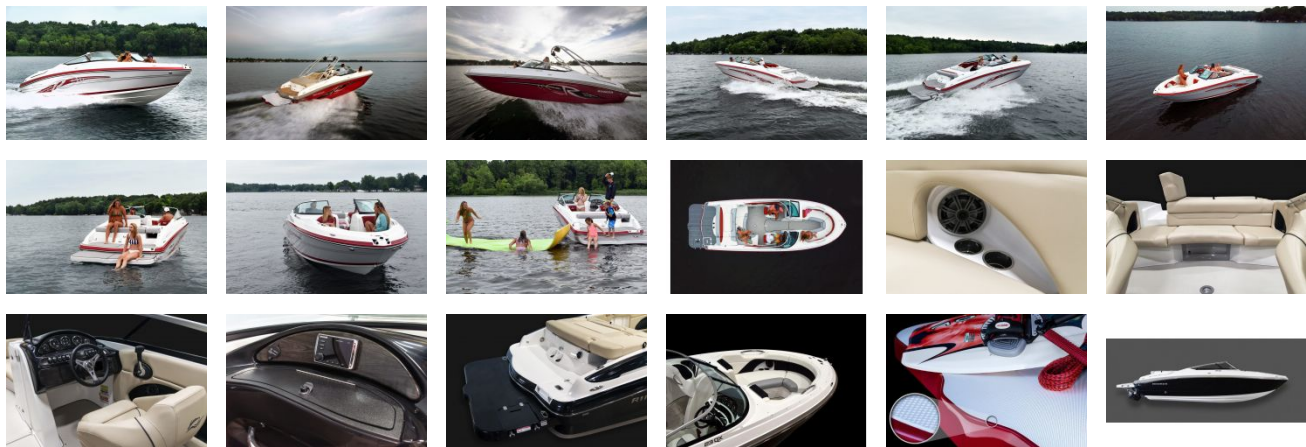
## Entertainment

- Stereo – 4/6 Speakers (model specific), AM/FM Satellite Ready

## Helm

- Digital Depth Gauge
- Steering – Tilt, 5 Position

GALLERY



HAWK'S  YACHTS

**Hawks Yachts**  
Liberty Marina  
64 Old South River Rd  
Edgewater MD 21037  
Phone: (888)848-9842