



**Jefferson Beach Yacht Sales**  
24400 Jefferson Avenue,  
St. Clair Shores, MI 48080  
Phone: 866-490-5297

# Rinker 29QX Sterndrive

Boat Type: Sport Cruiser



## OVERVIEW

## 29QX

**Whether you are cruising across the lake for a dockside lunch, perfecting your skiing skills, or taking it easy in the spacious and comfortable bow and cockpit, the Rinker 29QX is made for getting away from it all.**

The 29QX features a 9'1" beam that enhances the general floor plan of the boat. This boat has the most storage in its class. In the cockpit, you'll find a refreshment center with a pressurized water system, cooler storage compartment, a hidden trash container, and gadget storage compartments. The two swivel seats with flip-up bolsters give the cockpit a living room style feel, perfect for socializing. For music lovers, the 29QX has a [Kicker®](#) audio system with speakers carefully located throughout the boat to optimize the sound quality.

This boat is perfect for a family field day and makes lasting memories. Soak up the sun.

SPECIFICATIONS

Basic Information

Manufacturer:	Rinker	Boat Type:	Sport Cruiser
Model:	29QX Sterndrive	Hull Material:	
Hull Type:		Category:	Power

Dimensions & Weight

Length:	29.00 ft	Draft - max:	3 ft - 0.91 meter
LOA:	29 ft 2 in - 8.89 meter	Bridge Clearance:	5 ft 4 in - 1.62 meter
Beam:	9 ft 1 in - 2.77 meter	Dry Weight:	5765 ft
Deadrise Aft:	20.00 °		

Tank Capacities

Fuel Tank:	75 gallons - 1 tank(s)	Holding Tank:	-
Fresh Water Tank:	10 gallons - 1 tank(s)		

Accommodations

Total Cabins:	-	Crew Cabins:	-
Total Berths:	-	Crew Berths:	-
Total Sleeps:	2	Crew Sleeps:	-
Total Heads:	-	Crew Heads:	-
Captains Cabin:	No		

FEATURES

Standard Features

Cabin

- V-Berth (QX29 CC Only)

Canvas

- Bimini Top with Boot, Color Coordinated Acrylic

Cockpit

- Bow Doors – Walk-Thru and Latchable
- Flooring – Snap-in, Chilewich Bamboo
- Cushioned Armrests at Throttle Position
- Integrated Trash Container – Composite, Removable
- Seating – Dual Bucket Seats with Flip-Up Bolster
- Seating – Helm with Flip-Up Bolster
- Shower – Transom, Pressurized
- Sink w/ Refreshment Center, Pressurized Water
- Solid Surface – Lids and Surfaces

- Storage – In-Floor/Large
- Storage – Port Side Dash Glove Box
- Storage – Starboard Console
- Storage – Transom – Storage/Trunk
- Table Cockpit – Stowable

#### Construction

- Anchor Storage Locker w/ Cradle
- Bow Ladder with Stainless Steel Steps
- Cleats – Stainless Steel Pull-Up
- Docking Lights – LED
- Electric Engine Hatch Lift
- LED Engine Compartment Lighting
- Walk-Thru Transom Entrance
- Windshield – Curved with Walk-Thru, Tinted Safety Glass

#### Electrical

- Battery Holder
- Dual Battery System with Switch

#### Entertainment

- Stereo – 4/6 Speakers (model specific), AM/FM Satellite Ready
- Stereo Remote – Transom

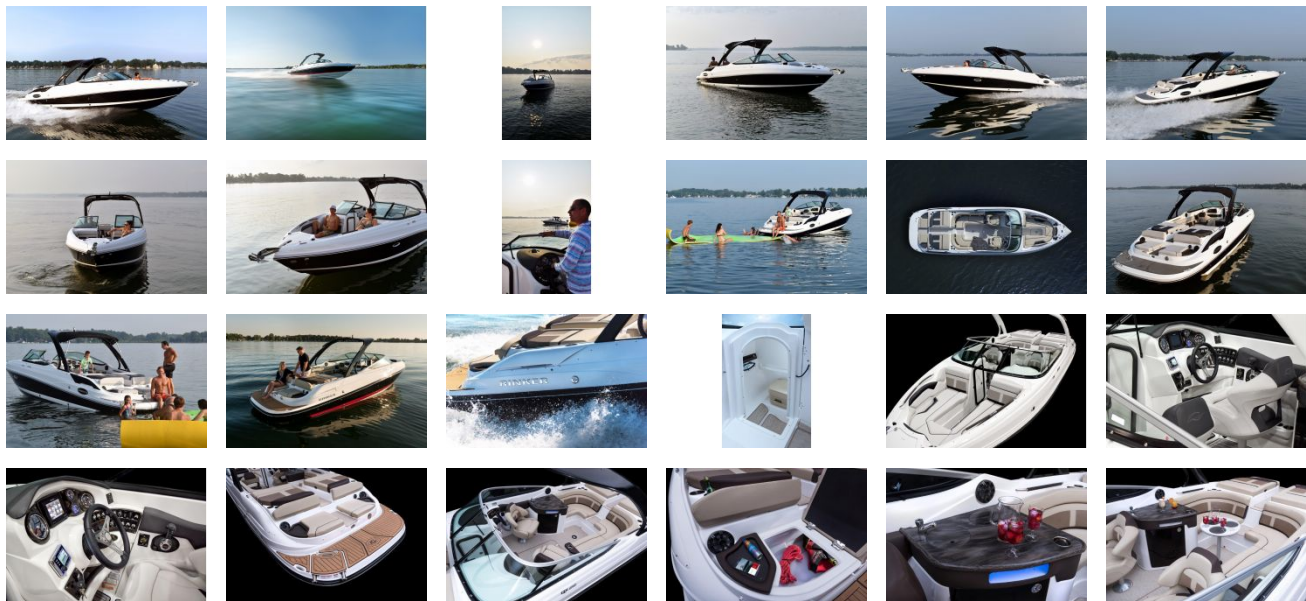
#### Head

- Liner, Fiberglass – Gelcoated Finish Throughout
- Toilets, Portable – Enclosed Head (QX29 BR Only)

#### Helm

- Chartplotter Raymarine A65
- Digital Depth Gauge
- Steering – Tilt, 5 Position
- Trim Tabs, Controls w/ LED Indicators

GALLERY



**Jefferson Beach Yacht Sales**  
24400 Jefferson Avenue,  
St. Clair Shores, MI 48080  
Phone: 866-490-5297