



Jefferson Beach Yacht Sales
24400 Jefferson Avenue,
St. Clair Shores, MI 48080
Phone: 866-490-5297

Sunseeker Predator 74

Boat Type: Motor Yacht



OVERVIEW

IMPOSING ON ANY VISTA.

The new Predator 74 has all the hallmarks of greatness. Striking style, remarkable power and an innovative use of light and space.

This latest Sunseeker can accommodate whatever your lifestyle desires. Lazy afternoons soaking up the sun on her spacious exterior decks or putting her through her paces at speeds up to 40 knots across the blue waters. The new Predator 74 has been built without compromise and without equal.

Perhaps most breathtaking is the exterior, with sleek yet oversized pillarless windows down to the side deck. Providing uninterrupted views of your surroundings and letting natural light completely flood the interior.

On top of this, you'll find a cleverly engineered cockpit door mechanism which opens conventionally, or lowers itself completely into the sole of the yacht – all at the simple flick of a switch. So offering the best of both worlds; to suit you and the environment you're travelling in.

Inside, the generous saloon proves to be the perfect spot for entertaining, with a sumptuous seating area, ample

storage and comprehensive port-side bar console; all below an extraordinary panoramic glass sliding roof.

Every cabin is equipped with state of the art entertainment and the attention to detail is flawless. Guests will feel truly pampered in whichever one of the guest cabins they dwell with the master stateroom offering exceptional space and the flexibility of either a walk-in wardrobe or office area.

SPECIFICATIONS

Basic Information

Manufacturer:	Sunseeker	Boat Type:	Motor Yacht
Model:	Predator 74	Hull Material:	
Hull Type:		Category:	Power

Dimensions & Weight

Length:	74.00 ft	Draft - max:	6 ft - 1.83 meter
LOA:	74 ft 10 in - 22.81 meter	Bridge Clearance:	-
Beam:	17 ft 8 in - 5.39 meter	Dry Weight:	99868 ft
Deadrise Aft:	-		

Tank Capacities

Fuel Tank:	1268 gallons - 1 tank(s)	Holding Tank:	-
Fresh Water Tank:	211 gallons - 1 tank(s)		

Accommodations

Total Cabins:	-	Crew Cabins:	-
Total Berths:	-	Crew Berths:	-
Total Sleeps:	-	Crew Sleeps:	-
Total Heads:	-	Crew Heads:	-
Captains Cabin:	No		

FEATURES

Construction

Hand-laid

GRP Gel coat including stripes

Vinylester skin coat with powderbound mat

Stitched multi-axial reinforced single-skin bottom

Balsa-cored hull topsides PVC foam-cored deck and superstructure

Hull stiffened with longitudinal stringers supported by transverse bulkheads and floors

Deck

Fittings all in stainless steel

8 x stainless steel deck cleats

Pulpit and cockpit rails

Stainless steel fendering with rubber insert

Curved safety glass windscreen
Stainless steel bow roller with anchor stop
Stainless steel bow plate
Delta anchor and 60m chain (galvanised)
Electric winch and capstan with deck and Interior helm controls
Chain locker/fender stowage
Fender tie bar under anchor locker lid
Fore deck coach-roof storage lockers
Bow sunbather
Bow waterproof speakers
Forward facing seating group with optional table
Fuel fillers port and starboard
Fresh water filler
IMCO navigation lights
3 x Pantograph windscreen wipers and washers
Garage for tender
Ensign staff and socket

Bathing Platform

Hydraulic lifting platform
Teak-laid bathing platform and steps
Hot and cold swimming shower
Fresh water marina connection
Dockside AC shore power connection
Stainless steel swimming ladder

Aft Cockpit

Self-draining
Teak-laid cockpit decking Stern safety door
Cockpit waterproof speakers
Wetbar sink with hot and cold water, cool box, ice maker, locker and griddle Upholstered seating around folding cockpit table
Large stern sunbather
Lockers beneath seating
Overhead cockpit lights 24v
Low-level courtesy lights 24v
Engine room access hatch
Boat hook

Helm Console

Opening glazed sunroof
Side access door
Twin helm seats
Navigation console with chart area
Hydraulic power steering
Leather rimmed steering wheel
Analogue engine instrumentation
Chart plotter with GPS
Radar open scanner
Autopilot Speed and depth instrumentation

VHF radio with DSC
Rudder indicator
Monitoring for Water and Fuel
Generator controls
Trim tab controls
Single-lever electronic engine controls
Magnetic compass
Waterproof plug and socket and USB
Horn
Windscreen wipers and washers
Glass holders
Hand-held fire extinguisher

Deck Saloon

Saloon seating group with folding dining table
Seating or console unit option opposite
Raised observation seating next to helm
Television 55" on fall and rise system
Blu-ray player and sound bar Overhead lighting LED 24v
Stainless steel sliding and drop door to cockpit
Air conditioning
Double AC sockets
Wood flooring
Choice of interior finishes and veneers
Scatter cushions

Galley

Sink and drainer
4-ring ceramic touch-control hob and extractor fan
Electric refrigerator
Electric freezer
Microwave convection oven
Hot and cold water
Rubbish bin
Cupboard and drawer storage
8 place crockery set
8 place cutlery set
2 x double AC sockets
Hand-held fire extinguisher
First aid kit
Wood flooring

Forward Stateroom

Double berth
Storage beneath
Drawer in base-end
2 x reading lights 24v
Outboard shelving and cupboards
Overhead bedside cupboards
Walk in hanging wardrobe

Overhead lights LED 24v
Opening portholes with mosquito screens and blinds
Deck hatch with blind and mosquito screen
2 x double AC sockets
Door to shower room
Fitted carpet
Air conditioning
40" television and sound bar

Forward En Suite Shower Room

Washbasin
Taps and accessories
Hot and cold water supply
Separate shower compartment
Electric toilet
Extractor fan
Mirrored vanity unit
Shelved cupboard
Toothbrush and glass holder
Soap dispenser
Towel ring and towels
Overhead lights
Opening porthole with mosquito screen and blind
Razor socket 240/110v

Starboard Guest Cabin

2 x single berths
Under-berth storage
2 x reading lights 24v
Hanging wardrobe
Overhead lighting LED 24v
Opening porthole with mosquito screen and blinds
Double AC socket
Fitted carpet
Air conditioning
22" television with amp and speakers

Starboard En Suite Shower Room

Washbasin
Taps and accessories
Hot and cold water supply
Separate shower compartment
Electric toilet
Extractor fan
Mirrored vanity unit
Shelved cupboard
Toothbrush and glass holder
Soap dispenser
Towel ring and towels
Overhead lights LED

Opening porthole with mosquito screen and blind
Razor socket 240/110v

Master Aft Stateroom

Double berth
Cupboard and drawer stowage
2 x reading lights 24v
Bedside drawers
Walk-in wardrobe
Overhead lights LED 24v
2 x large windows with opening portholes, mosquito screens and blinds
Two double AC sockets
Door to shower room
Fitted carpet
Two seats with table
Air conditioning
40" television with Blu-ray player and sound bar

Aft En Suite Shower Room

Washbasin
Taps and accessories
Hot and cold water supply
Separate shower compartment
Electric toilet
Extractor fan
Mirrored vanity unit
Shelved cupboard
Toothbrush and glass holder
Soap dispenser
Towel ring and towels
Overhead lights LED
Opening porthole with mosquito screen and blind
Razor socket 240/110v

Crew Cabin

Entrance door from rear cockpit
Two single berths
Wardrobe Storage locker
Opening porthole with mosquito screen
Overhead lights LED 24v
Reading lights 24v
Double AC socket
Air conditioning
Separate shower room with hot and cold water
Electric toilet and holding tank
Shaver socket 240/110v

Electrical System

19kW 50Hz (21.5 kW 60Hz USA) generator with underwater silent exhaust and sound shield
AC dockside connection

Galvanic isolator
24v and 12v DC electrical system with full circuit breaker protection
8 x engine batteries 24v circuit
6 x domestic batteries 24v circuit
Alternator split charging system
Remote battery switches controlled from locker in cockpit
Battery charger for 24v circuits
Water heater
AC electrical sockets throughout the boat
24v hand light and cable

Engine Compartment and Ancillaries

Soundproofing throughout
Fuel filters/water separators to engines
Fuel filters/water separators to generators
Automatic bilge and flood pumps with high-level alarms
Generator exhaust silencers and water separators
Engine exhaust dry risers and water injection
Strainers to all raw water inlets
Power steering – hydraulic control steering
Lifting platform, garage door and trim tabs hydraulic control unit
Air intakes fitted with emergency shutdown flaps (automatically operated)
Air extraction fans (AC) fitted with butterfly shutdown dampers
Exhaust gas temperature sensor
LED lights 12v
Engine room fire extinguishing system (FM200)
1 x AC 220v socket 1 x 24v socket
Portable CO2 fire extinguisher
Inspection lamp

Underwater Gear

Bow thruster – Electric 24v
Seawater strainers – nickel-plated bronze
Full cathodic bonding system to aluminium anodes
Hydraulic trim tabs – stainless steel
Propeller shafts — Temet 25
High performance rudders – AB2
P-brackets – NAB nickel aluminium bronze c/w water lubricated bearing
Self-aligning shaft seal including spare seal
5-blade AB2 bronze propellers

Systems

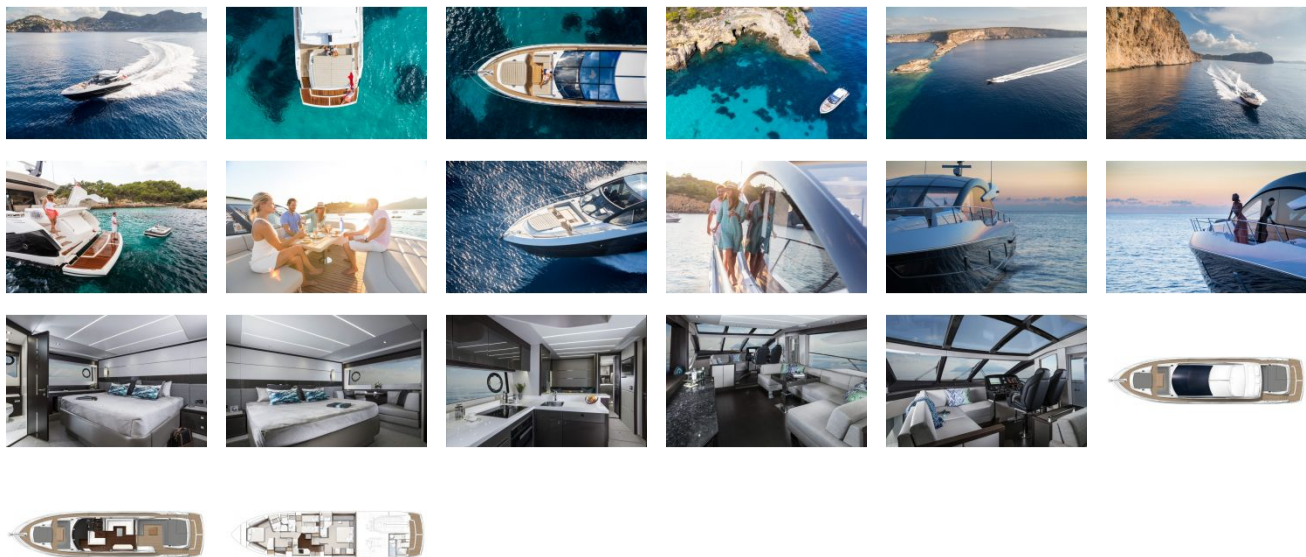
Hydraulic power steering
Electric toilet system with integral macerator (24v)
Toilets discharging to black water tank
Black water tank discharging to dockside or overboard
Fresh water tank with electric sending unit
Fuel tank with electric sending unit
Water pressure system (24v)
Washbasins, showers and air conditioning fan coils to drain to grey water tank

Grey water tank discharging overboard Self-contained and split gas air conditioning system (reverse cycle) AC
Bilge pumping system (24v)
Manual/automatic fire extinguishing system combined with engines, generators and fans shutdown
Auxiliary hydraulics for trim tabs and platform (24v)

Miscellaneous

Toolkit
Boat hook
4 x mooring ropes
8 x fenders
6 sets towels

GALLERY



Jefferson Beach Yacht Sales
24400 Jefferson Avenue,
St. Clair Shores, MI 48080
Phone: 866-490-5297