



Randy Cowley Yacht Consultants
4706 West Ruffner Street
Seattle, WA 98199
Phone: 206-605-5473

SonShip 87 Pilothouse

Boat Type: Pilothouse



OVERVIEW

The all-new SonShip 87 Raised Pilothouse features sophisticated styling with a modern attitude. Inside this luxury yacht, you'll find a revamped interior that includes formal dining space for gracious, comfortable entertaining. The 87 Pilothouse is available with a skylounge or cockpit.

SPECIFICATIONS

Basic Information

Manufacturer:	SonShip	Boat Type:	Pilothouse
Model:	87 Pilothouse	Hull Material:	
Year:	2018	Hull Type:	
Category:	Power		

Dimensions & Weight

Length:	87.00 ft	Draft - max:	5 ft - 1.52 meter
LOA:	92 ft - 28.04 meter	Bridge Clearance:	-
Beam:	20 ft - 6.1 meter	Dry Weight:	135000 ft
Deadrise Aft:	15.00 °		

Tank Capacities

Fuel Tank:	2750 gallons - 1 tank(s)	Holding Tank:	200 gallons - 1 tank(s)
Fresh Water Tank:	600 gallons - 1 tank(s)		

Accommodations

Total Cabins:	-	Crew Cabins:	-
Total Berths:	-	Crew Berths:	-
Total Sleeps:	-	Crew Sleeps:	-
Total Heads:	-	Crew Heads:	-
Captains Cabin:	No		

FEATURES

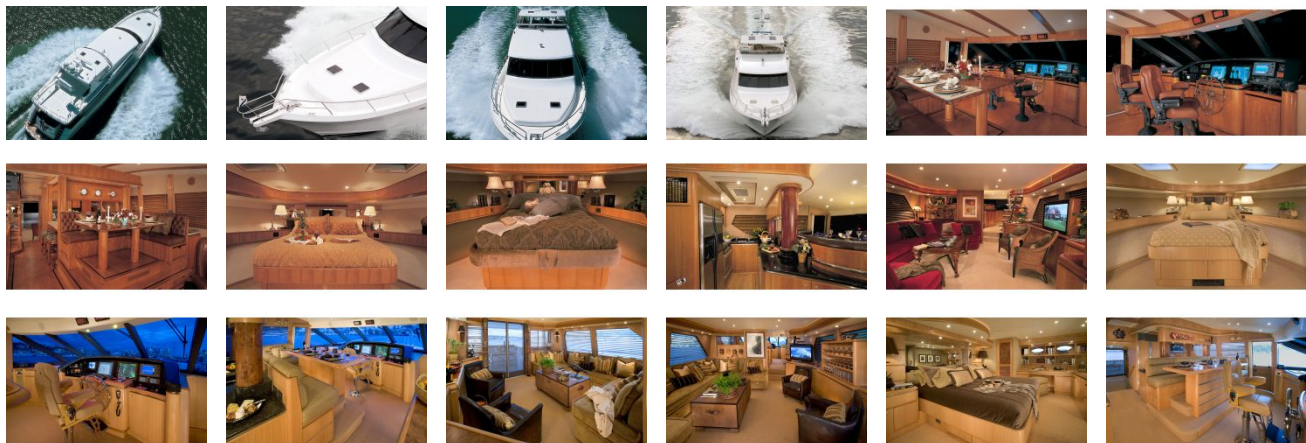
FEATURES

- Aft Deck/Swim Deck
- Command Bridge
- Salon
- Galley
- Pilothouse
- Master Stateroom
- Master Head
- Forward VIP Stateroom
- Companionway/Laundry
- Guest Heads (2) and Crew Head
- Port Guest Stateroom
- Crew Stateroom
- Crew Head

INTERIORS

- Select flat cut Sapele Mahogany woodwork. (Other wood available upon request)
- Carpet with underlay.
- Strip wood engineered flooring in Galley and Pilothouse.
- Lighting: flush-mounted LED in ceiling with Vimar switching.
- Headliner: fitted vinyl installed on Whisper track system.
- Decorative wallcoverings.
- Aromatic cedar-lined closets and hanging lockers.
- Granite on Galley countertop, Settee table and Head countertops.
- Windows SonShip frameless design: tinted, heat-treated laminated glass with UV inhibiting film.
- Air conditioning system: reverse cycle with remote-mount compressors (7-zone), Cruisair.

GALLERY



Randy Cowley Yacht Consultants
4706 West Ruffner Street
Seattle, WA 98199
Phone: 206-605-5473