



Jefferson Beach Yacht Sales
24400 Jefferson Avenue,
St. Clair Shores, MI 48080
Phone: 866-490-5297

Sunseeker 95 Yacht

Boat Type: Motor Yacht



OVERVIEW

SPACIOUS ELEGANCE

A magnificent performance craft, the 95 Yacht exemplifies the latest in our cutting-edge design and innovative build processes, showcasing the exciting new design direction that our next generation of larger yacht models will take.

Showing off a streamlined yet spacious elegance, the 95 Yacht combines a superyacht feel with many practical advantages, demonstrating a clever use of space that gives even greater flexibility and freedom onboard.

Fully equipped for luxury entertaining, this is yet another stunning illustration of striking lines and open plan layout, combining a superyacht feel with all the practical advantages of a yacht in this size category.

SPECIFICATIONS

Basic Information

| | | | |
|---------------|-----------|----------------|-------------|
| Manufacturer: | Sunseeker | Boat Type: | Motor Yacht |
| Model: | 95 Yacht | Hull Material: | |
| Hull Type: | | Category: | Power |

Dimensions & Weight

| | | | |
|---------------|--------------------------|-------------------|-------------------|
| Length: | 95.00 ft | Draft - max: | 7 ft - 2.13 meter |
| LOA: | 92 ft 1 in - 28.07 meter | Bridge Clearance: | - |
| Beam: | 21 ft 6 in - 6.55 meter | Dry Weight: | 186731 ft |
| Deadrise Aft: | - | | |

Tank Capacities

| | | | |
|-------------------|--------------------------|---------------|-------------------------|
| Fuel Tank: | 3170 gallons - 2 tank(s) | Holding Tank: | 115 gallons - 1 tank(s) |
| Fresh Water Tank: | 462 gallons - 1 tank(s) | | |

Accommodations

| | | | |
|-----------------|----|--------------|---|
| Total Cabins: | - | Crew Cabins: | - |
| Total Berths: | 10 | Crew Berths: | 4 |
| Total Sleeps: | - | Crew Sleeps: | - |
| Total Heads: | - | Crew Heads: | - |
| Captains Cabin: | No | | |

FEATURES

Construction

- Hand-laid GRP
- Gel coat including stripes
- Vinylester skin coat with powderbound mat
- Stitched multi-axial reinforced single-skin bottom
- Balsa-cored hull topsides
- PVC foam-cored deck and superstructure
- Hull stiffened with longitudinal stringers supported by transverse bulkheads and floors 2 Flybridge

Flybridge

- Self-draining cockpit
- Acrylic deflecting spray screen
- Seating areas
- Storage lockers under seating
- Teak dining table (natural finish) with stainless steel pedestal
- Stainless steel aft safety rails
- Glass holders
- Wetbar unit
- Sink in wetbar unit

Icemaker in wetbar unit
Fridge in wetbar unit
Ceramic electric griddle in wetbar unit
Fire extinguisher in wetbar locker
Deckwash outlet
Low-level flybridge LED lighting (24v)
Radar arch structure
Radar chair with navigation light assembly
Overhead LED lighting on underside of radar arch (24v)
Four marine speakers controlled via Sonos
Teak decking
Ensign staff and socket

Flybridge Helm

Two helm seats
Hydraulic steering
Duplicate engine controls
Analogue engine instrumentation
Autopilot repeater
Radar/chart plotter with GPS repeater
Depth and speed multi display
Cm8 monitoring system display
Fuel display
VHF second station
Remote spotlight control
Magnetic compass
Trim tab control
Horn control
Waterproof plug and socket 12v
Waterproof USB charger outlet

Deck

Teak decking
Fittings all in 316 stainless steel and chromed bronze
Pair stainless steel bow mooring bollards and fairleads
Stainless steel spring cleats
Pair stern mooring bollards and fairleads
Stainless steel pulpit and cockpit rails
Stainless steel bow roller with anchor stop and devil's claw
Single electric windlass 24v, starboard side, foredeck control only
Anchor 100kg claw-type (galvanised)
Anchor chain 100 metres (12mm diameter, galvanised)
Stainless steel bow plate
Deckwash with outlets forward and aft
Chain locker
Curved direct glazed safety glass windscreen
Pantograph windscreen wipers and washers
Fresh-water filler
Fuel fillers port and starboard with display

IMCO navigation lights
Remote controlled spotlight at bow
Low-level courtesy LED lights on side decks (24v)
U-shaped bow seat
Bow teak table (natural finish) on pedestal
Large bow sunbed
Glass holders

Aft Cockpit

Teak decking
Self-draining
Stairs to flybridge with teak treads
Aft fixed U-shaped bench seating
Teak table (natural finish) on stainless steel pedestal
Stern safety gates
Engine room access hatch
2 x stern capstan winches 24v and fairleads
Overhead cockpit LED lights (24v)
Low-level courtesy LED lights (24v)
Two marine speakers controlled via Sonos
Wetbar unit
Sink in wetbar unit
Icemaker in wetbar unit
Refrigerator in wetbar unit
Fire extinguisher in wetbar locker

Bathing Platform

Teak decked hydraulic lifting bathing platform (maximum lifting capacity 650kg/1433lb, maximum tender weight 550kg/1212lb)
Stairs to aft cockpit with teak decking treads
Stern spring cleats for stern-to-mooring purposes
Foldout stainless steel swimming ladder
Hot and cold hand-held swimming shower
Fresh-water marina connection
Ethernet network connection
Large transom storage lockers
Access to crew quarters
Dockside AC connection
5m hydraulic telescopic passerelle

Covers

Windscreen sun screen
Flybridge instrument cover
Aft cockpit camper cover with windows

Saloon and Dining

Stainless steel framed sliding door to aft cockpit
Sliding door curtains with tie back

Sofa seating
Coffee table
Scatter cushions
Television (55") on rise and fall
Blue-ray/CD/radio surround sound system with five speakers and sub-woofer
Sonos audio system
Air conditioning
Side windows with blinds
Drinks cabinet with glassware stowage for eight (10 x Champagne, 10 x whisky, 1 x decanter)
LED overhead lighting (24v)
Double 220v AC sockets
Sensor connected to fire detection system
Telephone point
1 x table lamp
Dining table
8 x freestanding dining chairs
Storage cupboards
Fitted carpet
Access to galley
Access to master stateroom
Access to day head
Stairs leading to guest cabins

Galley

American style fridge/freezer with ice maker
4-ring ceramic hob
Hob extractor
Convection oven
Microwave oven
Full size dishwasher
Stainless steel sink
Hot and cold water
Rubbish bin
Crockery set (10 place settings)
Cutlery set (10 place settings)
Side window with blind
Storage consisting of cupboards and drawers
LED overhead lighting (24v)
LED lighting under top box lockers (24v)
Double AC sockets
Sensor connected to fire detection system
Air conditioning
Fire blanket
Fire extinguisher
First aid kit
Manual side opening door to access port side deck
Access to dining and saloon

Main Helm Console and Observation Area

1 x upholstered helm seats with electric operation
Console with gloss black fascia panels
Hydraulic power steering
Leather bound steering wheel
Radar/chart plotter with GPS
Autopilot
Depth and speed displays
VHF radio first station
Magnetic compass
Horn control
Switch panels
Remote spotlight control
Trim tab controls
Digital engine instrumentation
Cm8 monitoring system display
Fuel display
12v socket outlet
USB charger outlet
Double 220v AC sockets
LED overhead lighting (24v)
Monitoring panel for fire detection system
Windscreen wiper and washer controls synchronized and multi speed
Air conditioning
Screen demister
Sofa observation seat
Chart stowage area
Glass holder
Fire extinguisher

Day Head

Toilet
Granite floor
Washbasin
Tap & accessories (toilet roll holder, soap dispenser, towel ring)
Mirror
Extractor fan
LED overhead lighting (24v)

Main Deck Master Stateroom

Panoramic side window
Double berth with foam mattress
Storage beneath berth
Drawers within berth
Bed side drawer units
Bedside wall lights 24v
Vanity/office desk with shelves
Desk stool

Settee with removable tray
Air conditioning
Television (55") on bulkhead
Blu-ray/CD/radio surround system with two speakers and sub-woofer
Sonos audio system
LED overhead lighting (24v)
Double AC socket
Fitted carpet
Sensor connected to fire detection system
Stairs leading to dressing room and en suite

Master Stateroom Dressing Room

Hanging rails
Shelves
Dressing table
Stool for dressing table
LED overhead lighting (24v)
AC socket
Fitted carpet

Master Stateroom En Suite

Toilet
Granite flooring
Large twin washbasin
Taps and accessories (toothbrush and glass holder, soap dispenser, towel rails and towels)
Separate shower compartment
Glass shower door
Extractor fan
Air conditioning outlet
Mirror
Storage cupboard
LED overhead lighting (24v)
Opening porthole with mosquito screen and
Venetian blind
Shaver socket 240/110v

Lower Deck Lobby

Stairs leading down from main deck saloon area
LED overhead lighting 24v
AC socket
Fitted carpet
Sensor connected to fire detection system
Doors leading to lower deck guest accommodation

Midships VIP Stateroom (4 Cabin layout)

If 5 Cabin layout then this cabin is replaced with two cabins as per item 19 to 21
Double berth with foam mattress
Drawers within berth

Bedside units with drawers
Bedside wall lights 24v
Dressing table
Stool for dressing table
Settee
Air conditioning
LED overhead lighting (24v)
Panoramic window sets with round opening portlights (with mosquito screens)
Double 220v AC sockets
Television (40") on bulkhead
Blu-ray/CD/radio surround system with two speakers and sub-woofer
Sonos audio system
Sensor connected to fire detection system
Fitted carpet
Doors to en suite and walk-in wardrobe

Midships VIP Walk-in Wardrobe

Hanging rails
Drawers
Shelves
LED overhead lighting (24v)
AC socket
Fitted carpet
Door to stateroom

Midships VIP En Suite

Toilet
Granite flooring
Large washbasin
Taps and accessories (toothbrush and glass holder, soap dispenser, towel rails and towels)
Separate shower compartment
Glass shower door
Extractor fan
Air conditioning outlet
Mirror
LED overhead lighting (24v)
Opening porthole with mosquito screen and
Venetian blind
Shaver socket 240/110v
Door to stateroom

Aft Starboard Twin Guest Cabin

Twin berths with foam mattresses
Under-berth stowage
2 x reading lights 24v
Wardrobe
Air conditioning
LED overhead lighting (24v)

Panoramic window sets with round opening portlights (with mosquito screens)
Double 220v AC socket
Sensor connected to fire detection system
Television (32")
Blu-ray/CD/radio surround system with two speakers and sub-woofer
Sonos audio system
Fitted carpet
Doors to en suite and lobby

Aft Starboard En Suite

Toilet
Granite flooring
Washbasin
Taps and accessories (toothbrush and glass holder, soap dispenser, towel rails and towels)
Separate shower compartment
Glass shower door
Extractor fan
Air conditioning outlet
Vanity unit
LED overhead lighting (24v)
Opening porthole with mosquito screen
Shaver socket 240/110v
Door to guest cabin

Aft Port Twin Guest Cabin

Twin berths with foam mattresses (or double)
Under-berth stowage
2 x reading lights 24v
Wardrobe
Air conditioning
LED overhead lighting (24v)
Organic panoramic window sets with round opening portlights (with mosquito screens)
Double 220v AC socket
Sensor connected to fire detection system
Television (32")
Blu-ray/CD/radio surround system with two speakers and sub-woofer
Sonos audio system
Fitted carpet
Doors to en suite and lobby

Aft Port Twin En Suite

Toilet
Granite flooring
Washbasin
Taps and accessories (toothbrush and glass holder, soap dispenser, towel rails and towels)
Separate shower compartment
Glass shower door
Extractor fan

Air conditioning outlet
Vanity unit
LED overhead lighting (24v)
Opening porthole with mosquito screen
Shaver socket 240/110v
Door to guest cabin

Aft Crew Mess

Access door from stern
Sink with tap
Worktop with undercounter storage
Air conditioning
Microwave
Undercounter fridge
220v AC sockets
Washer/dryer AC
Telephone point
Sensor connected to fire detection system
LED overhead lighting (24v)
Seating area
Table
Television 22"
DVD/CD/radio with two speakers
Cm8 monitoring system display
Non-slip safety flooring
Doors to crew cabins and crew toilet/shower
Watertight door to engine room

Port Crew Cabin

Twin fixed Pullman bunk berths with foam mattresses
Reading lights 24v
Air conditioning
Wardrobe
LED overhead lighting (24v)
Double 220v AC socket
Sensor connected to fire detection system
CD/radio with two speakers
Fitted carpet
Opening porthole with mosquito screen and curtains
Door to crew mess

Starboard Crew Cabin

Twin fixed Pullman bunk berths with foam mattresses
Reading lights 24v
Air conditioning
Wardrobe
LED overhead lighting (24v)
Double 220v AC socket

Sensor connected to fire detection system
CD/radio with two speakers
Fitted carpet
Opening porthole with mosquito screen and curtains
Door to crew mess

Crew Toilet & Shower

Toilet
Washbasin
Shower cubicle
Mirror
Vanity unit
LED overhead lighting (24v)
Shaver socket 240/110v
Door to crew mess

Engine Compartment and Ancillaries

Fuel filters/water separators to engines and generators
Generator exhaust silencers and water separators
Hot water tank – 200 litres 230v AC
Engine exhaust dry risers with water injection
Central hydraulic system providing hydraulic power for bow thruster, stern thruster (if specified), stabilisers (if specified)
Chilled water air conditioning system (reverse cycle) AC
Air intakes fitted with mist eliminator system & emergency shutdown flaps
Air extraction fans 230v AC fitted with butterfly shutdown dampers
Fresh water pressure set – 230v AC
Fire hydrant system (single outlet) – 230v AC
Bilge pumps – 24v DC (automatically operated)
Engine driven hydraulic power pack – providing power steering
Electro/hydraulic power pack – 24v DC controlling trim tabs, and bathing platform
Fixed firefighting system – FM200 – automatic/manual operation with engines, generators and fans shutdown
Fixed firefighting system – FM200 – manual operation
Portable CO2 fire extinguisher
Soundproofing throughout

Electrical System

3 x 20kW @ 50Hz slowspeed generators with underwater silent exhaust and sound shield
Generator load sharing and synchronizing system
100A dockside AC connection
Voltage regulating isolation transformer
63A second shore supply connection
Semi-automatic AC power distribution
24v DC electrical system with full circuit-breaker protection
8 x starter batteries 24v circuit
2 x generator batteries 12v circuit
6 x domestic batteries 24v circuit
Independent battery back-up for VHF radio

Automatic battery charge distribution
Remote battery switches controlled from aft cockpit locker
2 x battery charger/inverter for 24v circuits
1 x battery charger/inverter for 12v circuits
1 x battery charger for VHF 12v System
1 x inverter system
3 x 2kW immersion heaters for calorifier
AC sockets throughout the boat
Class approved fire detection system with sensors in all cabins and monitoring beside main helm position Ethernet data network with WiFi access throughout the boat

Underwater Gear

5-blade nickel aluminium bronze propellers
P-brackets – AB2 nickel aluminium bronze c/w water lubricated bearing
Propeller shafts – Duplex F51 – high-grade stainless steel
Self-aligning shaft seal with spare seal
High performance rudders – Nibral
Full cathodic bonding system to zinc anodes
Hydraulic trim tabs – stainless steel
Antifouling

Systems

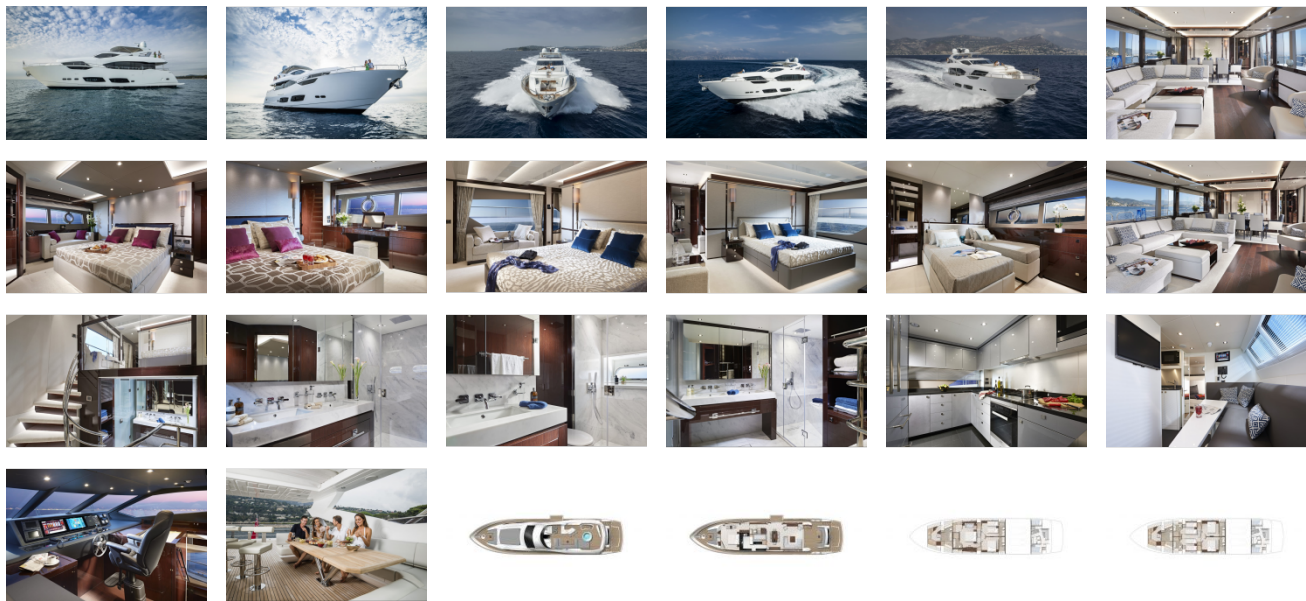
Electric toilet system with integral macerator 230v AC with two-switch control
Toilets discharging to a 435 litre black water tank
Black water tank discharging to a shore side facility or by a 24v DC macerating pump directly overboard
Fresh water stowed in an integral 1750 litre fresh water tank with Cm8 monitoring system
Water pressure system 230v AC
Hot water tank – 200 litre 230v AC
Hot water circulating pump 220v AC
Grey water transfer units transfer grey water into the 1000 litre grey water tank
Grey water tank discharging by a 24v DC pump directly overboard
Chilled water air conditioning system (reverse cycle) AC
Each area/cabin shall have room mounted variable speed AU HV air handling units
Bilge pumps – 24v DC (automatically operated)
Fixed firefighting system – FM200 – automatic/manual operation with engines, generators and fans shutdown
Fixed firefighting system – FM200 – manual operation
Integral GRP fuel tank with two open vent lines and
Cm8 monitoring system
Fuel filters/water separators to engines and generators
Central hydraulic system providing hydraulic power
for bow thruster, stern thruster (if specified), stabilisers (if specified)
Electro/hydraulic power pack – 24v DC controlling trim tabs, and bathing platform
Engine driven hydraulic power pack – providing power steering

Miscellaneous

Retractable boat hook
6 x docking lines (6 x 15 metre, 20mm diameter, black)
1 x tender line (1 x 10 metre, 10mm diameter, black)

8 x fenders (F7, 15" x 41", white)
8 x fender ties (8 x 3.5 metre, 10mm diameter, black)
Flagstaff with line
Pennant mast with pennant flag
Mosquito screens for openable portlights
Small toolkit in case
12 x towel sets
First aid kit
Fire blanket
Leather cleaning kit
Lead lamp
Deckwash fitting and hose reel
Portable fire extinguishers

GALLERY



Jefferson Beach Yacht Sales
24400 Jefferson Avenue,
St. Clair Shores, MI 48080
Phone: 866-490-5297