



Jefferson Beach Yacht Sales
24400 Jefferson Avenue,
St. Clair Shores, MI 48080
Phone: 866-490-5297

Sunseeker 116 Yacht

Boat Type: Motor Yacht



OVERVIEW

THE ULTIMATE LUXURY YACHT FOR ENTERTAINING IN STYLE

Welcome to the future of superyachts. The cutting-edge 116 is built upon the proven platform of its hugely popular predecessor, the 115 Sport Yacht, but takes sophistication to the next level with a spectacularly reimagined deck and superstructure, open-plan layout and stylish modern interior.

The 116 combines superb performance with Sunseeker's Bespoke service – meaning every element of the 116's design and layout, from guest cabin configuration to hot tub option, can now be individually tailored to the needs of the customer – we've succeeded in creating the ultimate luxury yacht for entertaining in style.

SPECIFICATIONS

Basic Information

Manufacturer:	Sunseeker	Boat Type:	Motor Yacht
Model:	116 Yacht	Hull Material:	
Hull Type:		Category:	Power

Dimensions & Weight

Length:	116.00 ft	Draft - max:	8 ft - 2.44 meter
LOA:	115 ft 6 in - 35.2 meter	Bridge Clearance:	-
Beam:	24 ft - 7.32 meter	Dry Weight:	308000 ft
Deadrise Aft:	-		

Tank Capacities

Fuel Tank:	3817 gallons - 2 tank(s)	Holding Tank:	335 gallons - 1 tank(s)
Fresh Water Tank:	1055 gallons - 1 tank(s)		

Accommodations

Total Cabins:	-	Crew Cabins:	-
Total Berths:	12	Crew Berths:	5
Total Sleeps:	-	Crew Sleeps:	-
Total Heads:	-	Crew Heads:	-
Captains Cabin:	No		

FEATURES

Deck Equipment, Anchor Deck and Wheelhouse Deck

- Side bulwark door on port and starboard sides
- 2 x anchor windlasses with hand control
- 2 x hawses with roller, chain stopper and devil’s claw
- 2 x anchors with galvanised chain
- 2 x mooring bollards and 4 x fairleads
- 2 x fairleads with integrated bollards at mid-ships
- Anchor and chain wash down
- Fresh water deck wash with outlets forward and aft
- Handrails with stainless steel stanchions
- Safety glass side windows and windscreen
- Direct access from the wheelhouse and side deck stairs
- Teak-laid side decks and wheelhouse deck area
- Non-slip anchor deck area
- Low-level lighting alongside decks 24v DC
- Sunpads on wheelhouse deck
- Seating area with table
- Two pairs of marine speakers on wheelhouse deck
- Remote control spotlight located on wheelhouse roof

Twin horns located on wheelhouse roof

Aft Cockpit and Bathing Platform and Stern Garage

Seating area

Dining table

Bar with stools

Refrigerator

Ice maker

Teak stair treads to flybridge deck

Teak-laid cockpit floor

Teak-laid stair treads on port and starboard sides leading to bathing platform

Teak-laid, hydraulic rise/fall and tilt bathing platform (fixed on outboard sides)

Stainless steel framed sliding doors to main saloon

Side deck door and stairs leading to engine room

Overhead lighting

Two pairs of marine speakers connected to saloon AV system

2 x capstans

2 x stainless steel bollards and 4 x fairleads

2 x stern bollards on outboard fixed sides of bathing platform

Hydraulic retractable gangway

Power operated door leading to stern garage

Stern garage (including recovery system) with storage for optional tender and two jet skis

Bathing ladder

Hot/cold water hand-held swimming shower

Locker with dockside water and deck wash at the stern

Locker with electrical shore power connection at the stern

Television and telephone dockside connection at the stern

Wetbar and stools

Flybridge Deck

Direct access from the wheelhouse and from the aft cockpit stairs

Stainless steel framed windscreen

GRP radar arch structure

Lighting on underside of radar arch

Low-level lighting

Three pairs marine speakers

Deckwash outlet

Seating areas

Dining table

Wetbar unit

Five fixed bar stools

Sink with hot and cold water

Fridge

Icemaker

Electric ceramic griddle

Storage cupboard

Stern safety rails

Safety rails around top of staircase

Stainless steel ensign staff and socket

Uplighters in wetbar

Flybridge Helm

Individual, manually adjustable pilot and co-pilot seats

Steering position with wheel

GRP console with dashboard panels

Electronic controls for main engines

Analogue engine instrumentation

Bow thruster control

Depth and speed display

Rudder angle indicator

Autopilot repeater

Radar, chart plotter and GPS fed to 2 x PC repeater displays

Magnetic compass

VHF with DSC

Main Saloon

Main Saloon

Aft sliding doors in stainless steel and safety glass

Sliding door curtains

Aft console units

Assorted seating

Armchairs

Fitted carpet

Coffee table

Side glazing with curtains

Side windows with blinds

Television (55") on rise and fall

Entertainment system with CD, DVD and Blu-ray

LED overhead lighting

Data point (RJ45)

Telephone point with Dect phone linked to PABX

Air conditioning

220v AC sockets

Dining Area

Dining table (for 10 people)

10 x dining chairs

Side console cabinets

Chinaware, glassware and cutlery (12 settings)

Side windows with blinds

Data point (RJ45)

Telephone point

LED overhead lighting

Table Lamps

Air conditioning
Fitted carpet
Access on starboard side to main deck lobby
Door to galley

Main Deck Starboard Side Lobby

Access from dining area leading to day head, main deck stateroom and crew lobby
Stairs leading up to wheelhouse
Stairs leading down to lower deck guest accommodation
Watertight side door (manual) leading to starboard side deck
LED overhead lighting
Side window with blind
Double 220v AC socket
Fitted carpet

Raised Wheelhouse

Pilot seat with electric movement control
Main engines electronic controls
Analogue engine instrumentation
Monitoring of boat systems via Tijssen Electro
Marine Personal Assistance 'MPA'
Trim tab control
Bow thruster control
Magnetic compass
Radar, chart plotter and GPS fed to
3 x PC displays
Transas electronic charting system
Autopilot
VHF with DSC and MF radio
Inmarsat C
Navtex receiver
AIS
Depth and speed monitoring via central navigation display
Rudder angle indicator
Windscreen wipers and glass washing system controls
Demisting outlets for windscreen
Searchlight control
Data points x 3 (RJ45)
Telephone points x 3 with 1 phone linked to PABX
3 x double 220v AC sockets
LED overhead lighting
Air conditioning
CD/radio with two speakers
Chart table with storage and chart light
Sofa seating area
Table beside seating area
Stairs leading to main deck
Stairs and framed sliding door leading to flybridge deck

Galley

Side window with blind
Safety flooring
Stone worktops
Twin bowl sink with tap
Cabinets and top-box lockers
Electric oven
Microwave
Full-height fridge
Full-height freezer
Icemaker
Dishwasher
Ceramic electric five-zone hob
Extractor fan ducted externally
Rubbish bin
Data point (RJ45)
Telephone point with 1 phone linked to PABX
LED overhead lighting
Lighting on underside of top-box lockers
Air conditioning
6 x double 220v AC sockets
Doors to dining area and crew lobby

Main Deck Servery

Safety flooring
Stone worktops
Cabinets
LED overhead lighting
Air conditioning
2 x double 220v AC sockets
Doors to dining area
Undercounter wine cooler
Freestanding coffee machine

Day Head

Tecma toilet (220v)
Washbasin and vanity top
Mirror
Taps
Soap dispenser
Toilet roll holder
Towel ring
Toilet brush and holder
Halogen overhead lighting
Extractor fan
Stone floor
Side window with blind

Main Deck Master Stateroom

Main Deck Master Stateroom

Double berth with sprung mattress, pillows and bedspread

Bedside cabinets

Bedside lights

Television (55") on bulkhead

Entertainment system with DVD, CD and Blu-ray

Upholstered chairs

Full-height glazing and curtains

Dressing table

Low back chair for dressing table

Storage cabinets and drawers

Escape hatch

Fitted carpet

Table lamps

Data point (RJ45)

Telephone point with Dect phone linked to PABX

LED overhead lighting

5 x double 220v AC sockets

Air conditioning

Doors to walk-in wardrobe, toilet room and main deck lobby

Main Deck Master Walk-in Wardrobe

Hanging space with rails

Drawers for storage

Safe deposit box

Mirror on back of entrance door

LED overhead lighting

Fitted carpet

14 Main Deck Master Toilet Room

Tecma toilet (220v)

Washbasin and vanity top

Stone floor

Side window with blind

Extractor fan

LED overhead lighting

Taps

Soap dispenser

Towel ring

Toilet roll holder

Toilet brush and holder

Door to en suite

Robe hook

Main Deck Master En Suite

2 x washbasins and vanity top

Stone floor

Storage lockers

Mirrors
Bath
Shower cubicle with glass door
Razor socket
Extractor fan
Air conditioning
LED overhead lighting
Taps
Soap dispenser
Toothbrush holder
Towel rings x 2
Robe hooks x 2
Door to toilet room
Laundry basket

Lower Deck Lobby

Stairs leading from main deck
Step lighting
LED overhead lighting
Fitted carpet
Doors leading to guest cabins

Lower Deck Aft Port Stateroom

Double berth with sprung mattress, pillows and bedspread
Bedside cabinets
Bedside lights
Television (32")
Entertainment system with DVD, CD and Blu-ray
Fixed portlights with blind
Dressing table
Stool for dressing table
Escape hatch
Data point (RJ45)
Telephone point with 1 phone linked to PABX
LED overhead lighting
4 x double 220v AC sockets
Air conditioning
Fitted carpet
Doors to walk-in wardrobe, en suite and lobby

Lower Deck Aft Port Walk-in Wardrobe

Hanging space with rails
Storage
Safe deposit box
Mirror on back of entrance door
Halogen overhead lighting

Fitted carpet

Lower Deck Aft Port En Suite

Tecma toilet (220v)

Washbasin and vanity top

Stone floor

Storage lockers

Mirrors

Shower cubicle with glass door

Razor socket

Portlight with blind

Extractor fan

Halogen overhead lighting

Taps

Soap dispenser

Toothbrush holder

Towel rails x 2

Robe hooks x 2

Toilet roll holder

Toilet brush and holder

Door to guest cabin

Lower Deck Aft Starboard Stateroom

Double berth with sprung mattress, pillows and bedspread

Bedside cabinets

Bedside lights

Television (32")

Entertainment system with DVD, CD and Blu-ray

Fixed portlights with blind

Dressing table

Stool for dressing table

Escape hatch

Data point (RJ45)

Telephone point with 1 phone linked to PABX

Halogen overhead lighting

4 x double AC sockets

Air conditioning

Fitted carpet

Doors to walk-in wardrobe, en suite and lobby

Lower Deck Aft Starboard

Walk-in Wardrobe

Hanging space with rails

Storage

Safe deposit box

Mirror on back of entrance door

Halogen overhead lighting

Fitted carpet

Lower Deck Aft Starboard En Suite

Tecma toilet (24v)
Washbasin and vanity top
Stone floor
Storage lockers
Mirrors
Stone seat within shower
Razor socket
Portlight with blind
Extractor fan
Halogen overhead lighting
Taps
Soap dispenser
Toothbrush holder
Towel rails
Robe hooks
Toilet roll holder
Toilet brush and holder
Door to guest cabin

Lower Deck Forward Port Guest Cabin

Two single berths with sprung mattresses, pillows and bedspreads
Bedside cabinet
Bedside lights
Television (32")
Entertainment system with DVD, CD and Blu-ray
Fixed portlights with blind
Wardrobe with hanging rail
Safe deposit box
Fitted carpet
Escape hatch
Data point (RJ45)
Telephone point with 1 phone linked to PABX
LED overhead lighting
3 x double 220v AC sockets
Air conditioning
Doors to en suite and lobby

Lower Deck Forward Port En Suite

Tecma toilet (24v)
Washbasin and vanity top
Stone floor
Storage lockers
Mirrors
Shower cubicle with glass door
Razor socket
Portlight with blind
Extractor fan

LED overhead lighting
Taps
Soap dispenser
Toothbrush holder
Towel rail
Robe hook
Toilet roll holder
Toilet brush and holder
Door to guest cabin

Lower Deck Forward Starboard

Guest Cabin
Two single berths with sprung mattresses, pillows and bedspreads
Bedside cabinet
Bedside lights
Television (32")
Entertainment system with DVD, CD and Blu-ray
Fixed portlights with blind
Wardrobe with hanging rail
Safe deposit box
Fitted carpet
Escape hatch
Data point (RJ45)
Telephone point with 1 phone linked to PABX
LED overhead lighting
3 x double AC sockets
Air conditioning
Doors to en suite and lobby

Lower Deck Forward Starboard En suite

Tecma toilet (220v)
Washbasin and vanity top
Stone floor
Storage lockers
Mirrors
Shower cubicle with glass door
Razor socket
Portlight with blind
Extractor fan
LED overhead lighting
Taps
Soap dispenser
Toothbrush holder
Towel rails
Robe hook
Toilet roll holder
Toilet brush and holder
Door to guest cabin

Crew Lobby

Doors at top of stairs to main deck lobby and galley
Staircase leading to lower deck crew cabins and crew mess
Safety flooring
LED overhead lighting
Lower deck doors leading to crew cabins

Crew Mess

Safety flooring
Stone worktop
Cabinets and top-box lockers
Fixed portlight with blind
Crew chinaware, glassware and cutlery (6 settings) with stowage
Data point (RJ45)
Telephone point with 1 phone linked to PABX
4 x double 220v AC sockets
LED overhead lighting
Air conditioning
Sofa seating area
Folding leaf dining table
Television (32")
DVD/CD player with two speakers
VHF handset
Depth and speed display

Aft Port Crew Cabin

Twin-bunk berths with foam mattresses, pillows and bedspread
Wardrobe with hanging rail
Fixed portlight with curtains
LED overhead lighting
Data point (RJ45)
Telephone point
220v AC socket
Air conditioning
CD/radio with two speakers
Escape hatch
Fitted carpet
Doors to en suite and lobby

Aft Port Crew En Suite

Tecma toilet (220v)
Washbasin
Lockers
Shower
Halogen overhead lighting
Razor socket
Extractor fan

Tap
Toothbrush holder
Toilet roll holder
Folding door to cabin with frosting

Aft Starboard Crew Cabin

Twin-bunk berths with foam mattresses, pillows and bedspread
Wardrobe with hanging rail
Fixed portlight with curtains
LED overhead lighting
Data point (RJ45)
Telephone point
AC socket
Air conditioning
CD/radio with two speakers
Escape hatch
Fitted carpet
Doors to en suite and lobby

Aft Starboard Crew En Suite

Tecma toilet (220v)
Washbasin
Lockers
Shower
LED overhead lighting
Razor socket
Extractor fan
Tap
Toothbrush holder
Toilet roll holder
Folding door to cabin with frosting

Forward Starboard Captain's Cabin

Large single berth with foam mattress, pillows and bedspread
Bedside cabinet
Bedside lights
Television (22")
DVD/CD with two speakers
Fixed portlight with curtains
Wardrobe with hanging rail
Safe deposit box
Fitted carpet
Escape hatch
Data point (RJ45)
Telephone point
LED overhead lighting
2 x double AC sockets
Air conditioning

Doors to en suite and lobby

Forward Starboard Captain's En Suite

Tecma toilet (220v)

Washbasin and vanity top

Storage lockers

Mirrors

Shower

Razor socket

Extractor fan

LED overhead lighting

Tap

Soap dispenser

Toothbrush holder

Toilet roll holder

Toilet brush and holder

Folding door to cabin with frosting

Stern Laundry

Washing machine

Condensing tumble dryer

Overhead lighting

2 x double 220v AC socket

Telephone point

Non-slip safety flooring

Covers

Flybridge instrument cover

Flybridge helmseat covers

Wheelhouse helmseat cover

Foredeck sunpad cover

Aft cockpit fixed seating cover

Aft cockpit table cover

Flybridge fixed seating covers

Flybridge bar stool covers

Flybridge table covers

Interior dining table cover

Flybridge sundeck cover

Foredeck table cover

Miscellaneous

1 x set Egyptian cotton sheets consisting of, mattress protector, 1 x fitted bottom sheet, 1 x flat top sheet, 1 x Oxford style & 1 x Housewife pillowcase per person

1 x set of towels per person

10 x large fenders with ties

3 x 20m black docking lines

2 x 15m black docking lines

1 x 10m black docking line

Spares kit
Sunseeker boat mat
Mosquito screens for all openable portlights

Engine Compartment and Ancillaries

Bow thruster hydraulic control unit 63kW.
Gearbox driven pumps 80cc (SAE 'C').
(Note: When optional stern thruster is specified, system is designed for simultaneous use, producing 80% performance from each thruster when operated at the same time.)
Power steering – hydraulic control unit with cooling pump – gearbox driven pumps (SAE 'C')
Emergency steering – hydraulic
Garage door and trim tabs hydraulic control unit – 24v
Lifting platform hydraulic control unit – 400v AC
Passerelle hydraulic control unit – 400v AC
1 x watermaker (180 litres/47 US gals per hour)
Emergency steering
Oil exchange system
Air intakes fitted with mist eliminator system & emergency shutdown flaps (automatically operated)
Air extraction fans (AC) fitted with butterfly shutdown dampers
Exhaust gas temperature sensor
Inspection lamp
Basic toolbox
Fluorescent lights (AC)
Emergency lighting (DC)
Simrad RS90 hand set with intercom speaker
Fire alarm systems
Fire hydrant system
Engine room fire extinguishing system (FM200)
Tender garage fire extinguishing system (FM200)
AC/DC electrical outlets (double AC & 1 x 24v outlet)
Power management system panel
Maglite torch
Manual submersible bilge pumps
1 x AC fire pump
Portable CO2 fire extinguisher

Underwater Gear

Bow thruster – hydraulic engine driven (63kW)
Seawater strainers – nickel plated bronze
Full cathodic bonding system to zinc anodes
Hydraulic trim tabs – stainless steel
Propeller shafts – Marinemet 25 – Duplex F51 – high grade stainless steel
High performance rudders – AB2 nickel aluminium bronze
P-brackets – AB2 nickel aluminium bronze c/w water lubricated bearing
Self-aligning shaft seal including spare seal
5-blade NAB bronze propellers

Fuel System

Fuel is stored in two dedicated tanks (1 x daily service tank and 1 x (optional) main tank) integral with hull structure complete with permanently open vent lines (note: all tanks should not be filled above 95%)

Main engines and generators draw and return from fittings on the day tank located within the engine room

Bunkering to both tanks through individual filling stations, port and starboard each fitted with a 2" fitting for filling and venting

Fuel level indication – displayed at main helm and flybridge

Accurate fuel monitoring via tank volume computer with digital bar-graph display at main helm and analogue indication at flybridge

Warning lights indication at 75% & 95% at fuel filling station

Each tank fitted with two capacitance level probes c/w NMEA 2000 communication bus

Accurate measurement for fuel levels can be taken when underway at speeds up to 12 knots before running trim will adversely affect the accuracy of the readings

Fuel piping (engine room) – press fit type stainless steel & zinc-plated steel with Parker high temperature rubber hose (single wire reinforcement) for short lengths

Fuel piping (all areas outside the engine room)

ISO 7840 fuel hose except fuel transfer line

Emergency fuel shut-off valves to main engines and generators – located on tank hatch. Valves remotely operated and actuated from the fire control locker with local manual override

Systems

Hydraulic power steering

Electric toilet system with integral macerator
(240v) with two-switch control

Toilets discharging overboard or to black water tank

Black water tank discharging to dockside or overboard

Integral fresh water tank with electric sending unit

Integral GRP fuel tank with electric sending unit

Water pressure system (400v 3 phase 50Hz)

Hot water tank x 2 at 200 litres each (with 3 x 2kW immersion heaters)

Hot water circulating pump 220v AC

Washbasins, showers and air conditioning fan coils to drain to grey water tank

Grey water tank discharging overboard or to black water tank

Chilled water air conditioning system (reverse cycle) 220v AC

Bilge pumping system (400v 3 phase 50Hz)

Manual/automatic fire extinguishing system combined with engines, generators and fans shutdown

Auxiliary hydraulics for trim tabs and platform (24v)

Electrical System

Vessels for all markets will be specified with 230/400 Volts 50Hz AC 3 phase power supplies and equipment.

Vessels entering the United States markets will be supplied with additional equipment to provide the necessary 120v 60Hz single phase supplies for power receptacles and AV systems

2 x 55kW 400/230v 3 phase 50Hz generators with underwater silent exhaust and sound shield

Tijssen Marine Personal Assistance touch screen based control system which facilitates control and monitoring of all the main ship systems including but not limited to, tank levels, alarms and monitoring, pump control, bilge status and all electrical load management

75 kVA shore power converter

Two dockside AC 100A connection

One power assisted cable retrieval system and one loose cable

Semi-automatic AC power distribution

24v DC electrical system with full circuitbreaker protection

Starter batteries 24v circuit

Domestic batteries 24v circuit

Independent battery back-up for VHF radio

Automatic battery charge distribution

Remote battery switches controlled from aft cockpit locker

2 x domestic service battery charger for 24v circuits

2 x engine battery charger for 24v circuits

1 x emergency battery charger

1 x radio battery charger

3 x 2kW immersion heaters for calorifier

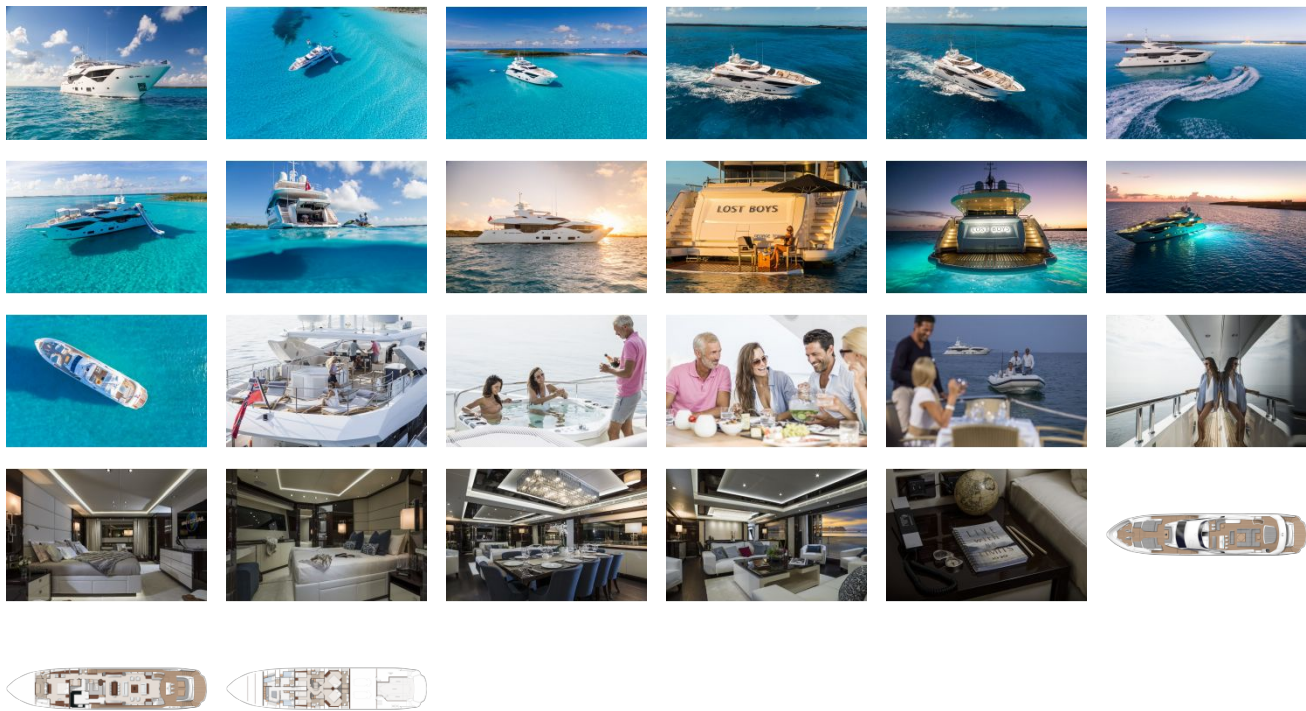
AC sockets throughout the boat

24v hand light and cable

Class approved fire detection system with sensors in all cabins and monitoring beside main helm position

PABX telephone exchange system with telephone

GALLERY



Jefferson Beach Yacht Sales
24400 Jefferson Avenue,
St. Clair Shores, MI 48080
Phone: 866-490-5297