



**Jefferson Beach Yacht Sales**  
24400 Jefferson Avenue,  
St. Clair Shores, MI 48080  
Phone: 866-490-5297

# Sunseeker Manhattan 52

Boat Type: Motor Yacht



## OVERVIEW

### INNOVATIVE DESIGN & SPACIOUS LIVING

Space, light and sociability define the new Manhattan 52. Its innovative design is all about spacious living that sets new benchmarks for the smaller flybridge motoryacht. Throughout the new Manhattan 52, we've maximised its living and entertainment space, incorporating expanses of beautiful curved glass to emphasise its sleek lines and bring in even more light. Throughout its main deck you'll discover exciting, sociable spaces that flow from the astonishingly roomy bow seating and sunbathing area to its open cockpit space and upper aft galley, giving you plenty of ways to relax, entertain and enjoy the good life.

The Manhattan 52 has been announced as the winner of 2017 Motor Boat Awards 'Flybridges up to 55ft' category.

The Sunseeker Priority Service provides 24/7 Hotline Support Worldwide for for all Volvo Penta powered boats.

## SPECIFICATIONS

### Basic Information

Manufacturer:	Sunseeker	Boat Type:	Motor Yacht
Model:	Manhattan 52	Hull Material:	
Hull Type:		Category:	Power

### Dimensions & Weight

Length:	52.00 ft	Draft - max:	4 ft 2 in - 1.27 meter
LOA:	52 ft 6 in - 16 meter	Bridge Clearance:	-
Beam:	16 ft - 4.88 meter	Dry Weight:	59524 ft
Deadrise Aft:	-		

### Tank Capacities

Fuel Tank:	580 gallons - 1 tank(s)	Holding Tank:	36 gallons - 1 tank(s)
Fresh Water Tank:	158 gallons - 1 tank(s)		

### Accommodations

Total Cabins:	-	Crew Cabins:	-
Total Berths:	6	Crew Berths:	1
Total Sleeps:	-	Crew Sleeps:	-
Total Heads:	-	Crew Heads:	-
Captains Cabin:	No		

## FEATURES

### Principal Features

Electric winch with bow roller, flybridge and cockpit controls  
Hot and cold platform swimming shower  
Cockpit folding doors from saloon  
Radio/CD player with cockpit and flybridge speakers  
Refrigerator/freezer  
Ceramic hob with extractor fan  
Microwave oven  
Chart Plotter dual station  
Autopilot dual station  
Speed and depth instruments  
VHF radio with DSC dual station  
Trim tabs  
Hydraulic power steering  
Electric bow thruster  
Hot and cold water system  
Automatic fire extinguishers  
Automatic bilge pumps  
Generator

AC shorepower and battery charger  
Teak bathing platform and steps  
Teak main cockpit floor  
Fresh water marina connection  
Electric toilets with holding tank

## **Standard Specifications**

### **Construction**

Hand-laid GRP  
Gel coat including stripes  
Vinylester skin coat with powderbound mat  
Stitched multi-axial reinforced single-skin bottom  
Balsa-cored hull topsides  
PVC foam-cored deck and superstructure  
Hull stiffened with longitudinal stringers supported by transverse bulkheads and floors

### **Deck**

Fittings all in stainless steel  
Deck cleats in stainless steel  
Delta anchor and 40m chain (galvanised)  
Electric winch and capstan 24v with deck and helm controls 24v  
Stem-head roller and anchor stop  
Self-draining chain locker-fender stowage  
Pulpit and cockpit rails in stainless steel  
Stainless steel fendering with rubber insert  
IMCO navigation lights  
2 x pantograph wipers 24v, windscreen washers  
Ensign staff and socket  
6 x fenders and 4 warps  
Curved safety glass windscreen

### **Bathing Platform**

Teak laid fixed platform  
Fresh water marina connection  
Dockside AC shore power connection  
Hot and cold swimming shower  
Foldaway stainless steel swimming ladder

### **Aft Cockpit**

Self-draining  
Moulded staircase to flybridge  
Upholstered seating with stowage underneath  
Stern safety gates  
Engine room access hatch  
Overhead lighting 24v  
Low level lighting 24v  
Teak-laid cockpit and steps

Radio/CD remote control  
Cockpit speakers  
Boat hook  
Hand-held fire extinguisher  
Stainless steel folding doors to interior

### **Flybridge Helm Position**

Self-draining  
Deflecting screen (acrylic)  
Hydraulic steering  
Twin Helm seats  
Sports steering wheel  
Duplicate engine controls and instrumentation  
Autopilot, chartplotter and VHF radio  
Speed and depth instrument  
Magnetic compass  
Trim tab control  
Instrument cover  
Upholstered seating group  
Storage below seats  
Teak cockpit table  
Sunbathing area forward  
Wetbar sink with hot and cold water  
Stainless steel guard rails and grab rails  
Glass holders  
Radio/CD remote control  
Cockpit speakers

### **Main Helm Console**

Two upholstered helm seats  
Console with black gloss fascia  
Hydraulic steering  
Sports steering wheel  
Chart plotter/GPS  
Autopilot  
VHF radio  
Engine instrumentation  
Speed and depth instrumentation  
Rudder indicator  
Magnetic compass  
Electric horn  
Windscreen wipers and washers  
Trim tab controls  
12V socket  
Glass holders  
Hand-held fire extinguisher  
Double AC socket

## **Saloon**

Seating group  
Dining table  
Overhead lighting 24v  
Double AC socket  
Radio CD with two speakers  
Stainless steel sliding cockpit door to aft cockpit  
Fitted carpet  
Scatter cushions

## **Galley**

Sink and drainer  
Hot and cold water supply  
Electric refrigerator with freezer compartment  
Ceramic 4-ring touch-control hob  
Hob extractor fan  
Microwave oven  
Rubbish bin  
6 place crockery set  
6 place cutlery set  
Cupboard and drawer storage  
Double AC socket x 2  
Overhead lighting 24v  
Hand-held fire extinguisher  
First aid kit

## **Master Aft Cabin**

Double berth with drawers beneath  
Outboard cabinet with vanity unit  
Bedside cupboards  
Bedside reading lamps  
Forward and aft facing seat with breakfast table  
Hanging wardrobe with mirrored door  
Overhead lighting 24v  
Panoramic windows with opening portholes  
Double AC socket x 3  
Fitted carpet

## **Master En Suite Shower Room and Toilet**

Electric toilet  
Shower taps and accessories  
Washbasin  
Hot and cold water  
Separate shower compartment  
Extractor fan  
Razor socket 240/110v  
Mirrored cupboard

Towel rail  
Bath, hand and face towel  
Overhead lighting 24v  
Opening porthole with Venetian blind  
Door to stateroom

### **Starboard Guest Cabin**

Two single berths  
Bedside reading lamps  
Under-berth stowage  
Hanging wardrobe with mirrored door  
Overhead lighting 24v  
Double AC socket  
Fitted carpet

### **Forward VIP Guest Cabin**

Double berth with storage and drawers beneath  
Bedside reading lamps  
Outboard overhead lockers  
Hanging wardrobe  
Vanity unit with mirrored locker  
Overhead lighting 24v  
Panoramic windows with opening portholes  
Deck hatch and skylight  
Double AC socket x 2  
Fitted carpet

### **Starboard VIP Shower and Toilet/Day Head**

Electric toilet  
Shower taps and accessories  
Washbasin  
Hot and cold water  
Separate shower compartment  
Extractor fan  
Razor socket 240/110v  
Mirrored cupboard  
Towel rail  
Bath, hand and face towel  
Overhead lighting 24v  
Opening porthole with Venetian blind

### **Engine Compartment and Ancillaries**

Soundproofing  
Aluminium fuel tanks with electric sender units  
Fuel filters/water separators to engines  
Fuel filters/water separators to generators  
Manual bilge/automatic flood pumps with high-level alarms  
Automatic bilge and flood pumps with high-level alarms

Generator exhaust silencers and water separators  
Engine exhaust dry risers and water injection  
Strainers to all raw water inlets  
Power steering – hydraulic control steering  
Trim tabs hydraulic control unit  
Air intakes fitted with emergency shutdown flaps (automatically operated)  
Air distribution fans DC  
Air extraction fans DC fitted with butterfly shutdown dampers  
Exhaust gas temperature sensor  
Engine room fire extinguishing system (FM200)

## **Electrical System**

Generator with underwater silent exhaust  
AC dockside connection  
Main DC and AC electrical circuits protected by re-settable circuit breakers  
Cm8 monitoring  
Systems monitoring panel  
Galvanic isolator  
4 x batteries for engine starting 24v circuit  
4 x batteries for domestic power 24v circuit  
Battery coupling system  
Battery switches controlled from locker in cockpit  
Alternator split-charging system  
Battery charger for 24v circuits  
Water heater  
Electrical AC sockets throughout the boat  
Electric bow thruster

## **Underwater Gear**

Bow thruster – electric 24v  
Seawater strainers – nickel-plated bronze  
Full cathodic bonding system to zinc anodes  
Hydraulic trim tabs – stainless steel  
Propeller shafts – Temet 25  
High performance rudders – AB2 bronze  
P-brackets – NAB nickel aluminium bronze c/w water lubricated bearing  
Self-aligning shaft seal including spare seal  
AB2 bronze propellers

## **Systems**

Hydraulic power steering  
Electric toilet system with integral macerator 24v  
Toilets discharging overboard or to black water tank  
Black water tank discharging to dockside or overboard  
600 litre fresh water tank with electric sending unit  
2,200 litre aluminium fuel tank with electric sending unit  
Water pressure system 24v  
Hot water tank with immersion heater AC

Washbasins and showers drain to sump box

Sump box automatically discharging overboard

Bilge pumping system 24v

Manual/automatic fire extinguishing system combined with engines, generators and fans shutdown

Auxiliary hydraulics for trim tabs 24v

### **Miscellaneous**

Portable toolkit

Boat hook

4 x mooring ropes

6 x fenders

2 x towel sets

### **Optional Extras**

Hydraulic lifting platform

Air conditioning

Hydraulic gangway

Stern thruster

Flybridge teak decking

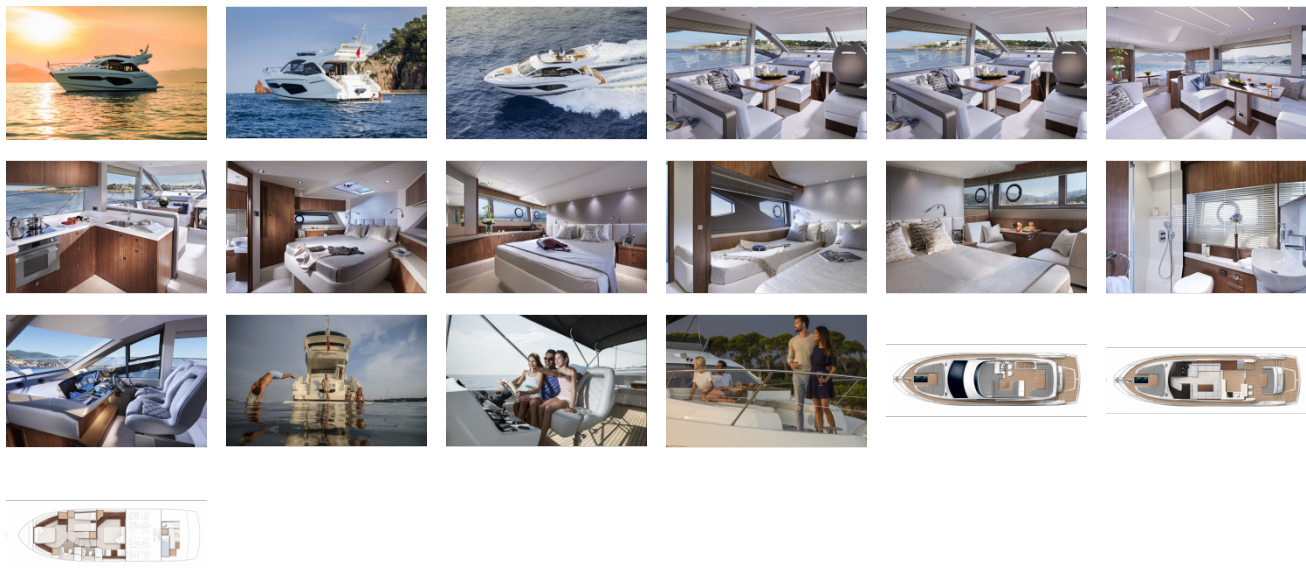
Teak side decks

Crew cabin

Hard top



GALLERY



**Jefferson Beach Yacht Sales**  
24400 Jefferson Avenue,  
St. Clair Shores, MI 48080  
Phone: 866-490-5297