



Jefferson Beach Yacht Sales
24400 Jefferson Avenue,
St. Clair Shores, MI 48080
Phone: 866-490-5297

Sunseeker Manhattan 66

Boat Type: Motor Yacht



OVERVIEW

This innovative new model is designed to maximise entertainment options with exceptional panoramic hull and saloon windows.

Throughout the main deck there is a strong focus on creating generous, useable sociable spaces. Her exterior lines flow effortlessly from the Portuguese-bridge bow seating and sunbathing areas to the expansive cockpit adjoining the well-equipped aft galley and saloon on the main deck.

The newly configured flybridge also creates the feeling that you are on board a much larger craft, large sunbathing areas forward and a well-equipped wet-bar. The sociable layout continues through to the wide bathing platform (capable of launching a Williams 385 Jet RIB) and transom 'beach club' where an optional barbecue, fold-away bench seat and overhead 'rain- shower' truly set the Manhattan 66 apart from its peers.

Thanks to the galley being situated on the main deck, there is room enough for four very spacious cabins below including two large twin cabins, a forward VIP suite and standout full-beam master cabin with its own private stairway access from the saloon; a first for Sunseeker in this size range.

SPECIFICATIONS

Basic Information

Manufacturer:	Sunseeker	Boat Type:	Motor Yacht
Model:	Manhattan 66	Hull Material:	
Hull Type:		Category:	Power

Dimensions & Weight

Length:	66.00 ft	Draft - max:	5 ft 11 in - 1.8 meter
LOA:	68 ft 3 in - 20.8 meter	Bridge Clearance:	-
Beam:	17 ft 3 in - 5.26 meter	Dry Weight:	84854 ft
Deadrise Aft:	-		

Tank Capacities

Fuel Tank:	1057 gallons - 1 tank(s)	Holding Tank:	49 gallons - 1 tank(s)
Fresh Water Tank:	238 gallons - 1 tank(s)		

Accommodations

Total Cabins:	-	Crew Cabins:	-
Total Berths:	8	Crew Berths:	2
Total Sleeps:	-	Crew Sleeps:	-
Total Heads:	-	Crew Heads:	-
Captains Cabin:	No		

FEATURES

Construction

Hand-laid GRP
Gel coat including stripes
Isophthalic polyester skin coat with powderbound mat
Stitched multi-axial reinforced single-skin bottom
Balsa-cored hull topsides and deck
Hull stiffened with longitudinal stringers supported by transverse bulkheads and floors
Antifouling

Deck

Fittings all in stainless steel
8 deck cleats in stainless steel
Delta anchor and 60m chain (galvanised)
Electric winch and capstan 24v with deck and cockpit controls 24v
Stemhead roller and anchor stop
Self-draining chain locker-fender stowage
Pulpit and cockpit rails in stainless steel
Stainless steel fendering with rubber insert

IMCO navigation lights
3 pantograph wipers 24v, windscreen washers
Ensign staff and socket
6 fenders and 4 warps
Remote spotlight 24v
Curved safety glass windscreen

Bathing Platform

Fresh water marina connection
Dockside AC shore power connection
Hot and cold swimming shower
Teak-laid bathing platform
Foldaway stainless steel swimming ladder
Hydraulic lifting platform

Aft Cockpit

Self-draining
Stainless steel staircase to flybridge
Transom storage locker
Upholstered seating
Transom safety gates
Engine room access hatch
Overhead lighting 24v
Low-level courtesy lighting 24v
Two external marine speakers
Teak-laid cockpit and steps
Boat hook
Hand-held fire extinguisher

Flybridge and Helm Position

Self-draining
Deflecting front screen
Hydraulic steering
Chrome steering wheel
Duplicate engine controls and instrumentation
Compass
Trim tab control
Electric speed and depth sounder
Bow thruster control
Autopilot and GPS navigator controls
VHF radio second station
12v socket
Instrument cover
Upholstered seating
Storage below seats
Teak Cockpit table
Sunbathing area forward
Stainless steel guard rails and grab rails

Glass holders
Radio CD remote control
Two external marine speakers
Low-level courtesy lights

Saloon

Saloon seating port and starboard
Dining table
Stainless steel sliding cockpit door to aft deck
Television 40"
DVD/Blu-ray cinema sound system
Radio/CD for external speakers
Overhead lighting 24v
2 x double AC sockets
Choice of lacquered interior finishes and veneer
Scatter cushions
Fitted carpet

Galley

Sink and drainer
Hot and cold water
Electric refrigerator/freezer
Ceramic hob
Hob extractor fan
Microwave combination oven
Rubbish bin
8 place crockery set
8 place cutlery set
Cupboard and drawer storage
Drinks cabinet
2 x double AC sockets
Overhead lighting 24v
Hand-held fire extinguisher
First aid kit

Main Helm Console

Twin Leather helm seats
Hydraulic steering
Leather rimmed chrome steering wheel
Radar/Chart Plotter
Autopilot
VHF radio
Analogue and digital engine instrumentation
Electric speed and depth sounder
Rudder indicator
Compass
Bow thruster control
Horn

Windscreen wipers and washers
Trim tab controls
Cigar lighter 12v
Main switch panel (AC/DC) with circuit breaker protection
Opening helm side door
Glass holders
Hand-held fire extinguisher

Master Aft Stateroom

Double berth
2 x reading lights 24v
Bedside and outboard cupboards
Outboard seats and table
Dressing table and stool
Overhead lighting 24v
Panoramic side windows with opening portholes and blinds
2 x double AC sockets
Television 40"
Fitted carpet
Walk-in hanging wardrobe with mirror
Door to en suite toilet/shower

Master En Suite

Electric toilet
Mirrored vanity unit
Washbasin and tap
Hot and cold water
Soap dispenser
Toothbrush and glass holder
Towel ring, towel rail and towels
Separate shower compartment
Extractor fan
Overhead lighting 24v
Opening porthole with mosquito screen and blind
Shaver socket 240/110v

VIP Forward Stateroom

Double berth
Drawers and storage beneath
Wardrobe
Dressing table and stool
Overhead lighting 24v
2 x reading lights 24v
2 x opening portholes with mosquito screens and blinds
Deck hatch with screen
Two double 240v AC sockets
Television 32"
Fitted carpet

Door to en suite toilet/shower

Forward En Suite

Electric toilet

Mirrored vanity unit

Washbasin and tap

Hot and cold water

Soap dispenser

Toothbrush and glass holder

Towel ring, towel rail and towels

Separate shower compartment

Extractor fan

Overhead lighting 24v

Opening porthole with mosquito screen and blind

Shaver socket 240/110v

Port Guest Cabin

2 single berths

Bedside table with drawer

2 x reading lights

Under-berth stowage

Full hanging mirrored wardrobe

Overhead lighting 24v

Opening porthole with mosquito screen and blind

Double AC socket

Door to en suite shower room

Television 22"

Fitted carpet

Door to en suite toilet/shower

Starboard Guest Cabin

2 single berths

Bedside table with drawer

2 x reading lights

Under-berth stowage

Full hanging mirrored wardrobe

Overhead lighting 24v

Opening porthole with mosquito screen and blind

Double AC socket

Door to en suite shower room

Television 22"

Fitted carpet

Door to en suite toilet/shower

Starboard Guest En Suite/Day Head

Electric toilet

Mirrored vanity unit

Washbasin and tap

Hot and cold water
Soap dispenser
Toothbrush and glass holder
Towel ring, towel rail and towels
Separate shower compartment
Extractor fan
Overhead lighting 24v
Opening porthole with mosquito screen and blind
Shaver socket 240/110v

Engine Compartment and Ancillaries

Soundproofing throughout
Aluminium fuel tanks with electric sender unit
Fuel filters/water separators to engines
Fuel filters/water separator to generator
Manual bilge/Automatic flood pumps with high-level alarms
Generator exhaust silencers and water separators
Engine exhaust dry risers and water injection
Strainers to all raw water inlets
Power steering – hydraulic control steering
Lifting platform and trim tabs hydraulic control unit
Air intakes fitted with emergency shutdown flaps (automatically operated)
Air distribution fans (DC)
Air extraction fans (DC) fitted with 7 shutdown dampers
Exhaust gas temperature sensor
Engine room fire extinguishing system (FM200)

Electrical System

Generator with underwater silent exhaust
AC dockside connection
Main DC and AC electrical circuits protected by re-settable circuit breakers
Galvanic isolator
4 batteries for engine starting 24v circuit
6 batteries for domestic power 24v circuit
2 batteries for generator starting 12v circuit
Battery coupling system
Battery switches controlled from locker in cockpit
Alternator split charging system
Battery charger for 24v circuits
Battery charger for 12v circuits
Water heater
Overhead lighting 24v
AC electrical outlet sockets throughout the boat
24v hand light and cable

Underwater Gear

Bow thruster – electric 24v
Seawater strainers – nickel plated bronze

Full cathodic bonding system to zinc anodes
Hydraulic trim tabs – stainless steel
Propeller shafts – Temet 25
High performance rudders – AB2
P-brackets – NAB nickel aluminium bronze c/w water lubricated bearing
Self-aligning shaft seal including spare seal
5-blade AB2 bronze propellers

Systems

Hydraulic power steering
Electric toilet system with integral macerator (24v)
Toilets discharging overboard or to black water tank
Black water tank discharging to dockside or overboard
Aluminium fresh water tank with electric sending unit
Aluminium fuel tank with electric sending unit
Water pressure system (24v)
Hot water tank with immersion heater (AC)
Washbasins, showers and air conditioning units drain to sump box
Sump box automatically discharging overboard
Air conditioning system (reverse cycle) AC
Bilge pumping system (24v)
Manual/automatic fire extinguishing system combined with engines, generators and fans shutdown
Auxiliary hydraulics for trim tabs (24v)

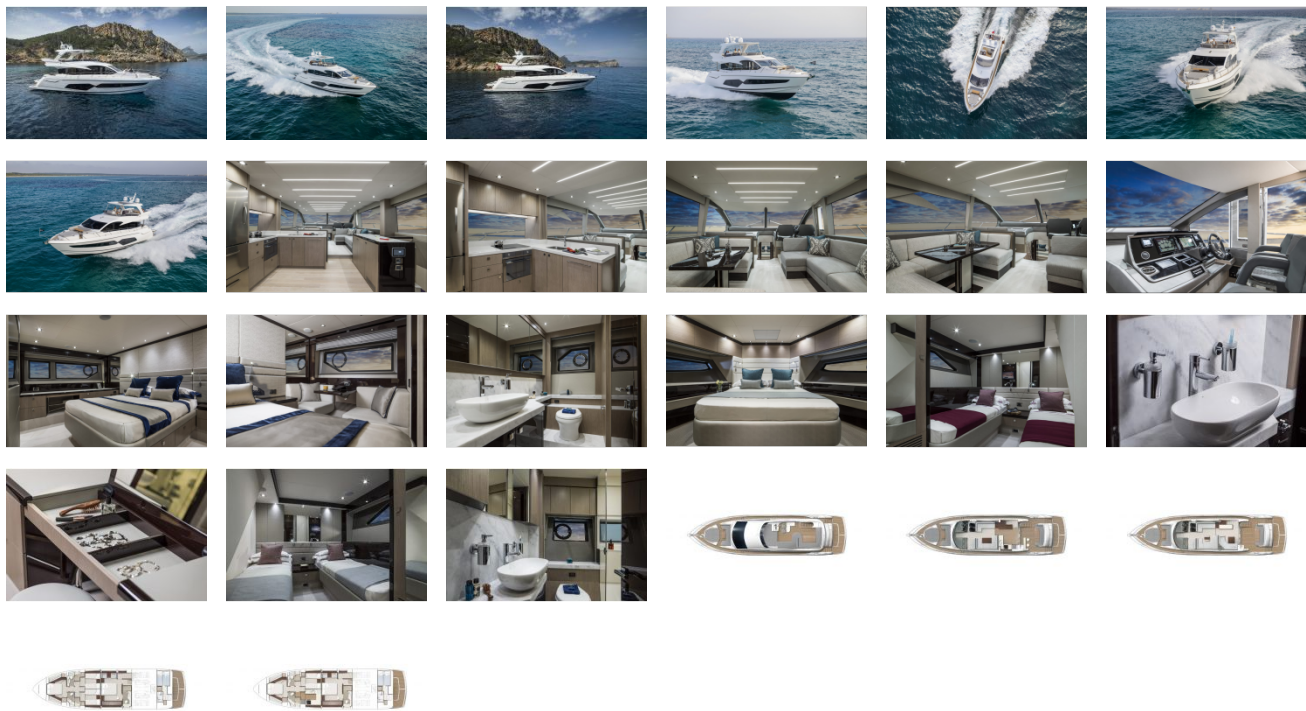
Miscellaneous

Toolkit
Boat hook
Mooring ropes x 4
Fenders x 6
Spare bulbs and fuses
4 x towel sets

Optional Extras

Bimini top or Hard top
Crew cabin aft with separate toilet
Teak flybridge decking
Teak side decking
Hydraulic passerelle
Washer/dryer
Lower galley option
Fin stabiliser
Foredeck and cockpit tables
Cockpit bar and stool

GALLERY



Jefferson Beach Yacht Sales
24400 Jefferson Avenue,
St. Clair Shores, MI 48080
Phone: 866-490-5297