



Jefferson Beach Yacht Sales
24400 Jefferson Avenue,
St. Clair Shores, MI 48080
Phone: 866-490-5297

Princess V65

Boat Type: Cruiser



OVERVIEW

Powerful and progressive, the exciting, all-new V65 sets a new standard. Her Olesinski-designed deep-V hull is optimised for greater lift and less drag, for lower planning speeds and greater efficiency. When entertaining, her spacious cockpit inspires relaxation with a sunpad and well-equipped dining area leading to the fully equipped aft galley. With five canopy blades to choose from and engines taking you up to 38 knots, the all-new V65 is as vivacious as she is valiant.

Her flexible saloon can be climate controlled or opened to the elements via triple sliding aft doors and a retractable sunroof. Below deck, eight guests enjoy four beautifully appointed cabins all bathed in natural light from elegant hull glazing, with the option of a further single cabin aft for occasional guests or crew.

SPECIFICATIONS

Basic Information

Manufacturer:	Princess	Boat Type:	Cruiser
Model:	V65	Hull Material:	
Hull Type:		Category:	Power

Dimensions & Weight

Length:	65.00 ft	Draft - max:	4 ft 9 in - 1.45 meter
LOA:	66 ft 10 in - 20.37 meter	Bridge Clearance:	-
Beam:	16 ft 9 in - 5.11 meter	Dry Weight:	79527 ft
Deadrise Aft:	-		

Tank Capacities

Fuel Tank:	1083 gallons - 1 tank(s)	Holding Tank:	-
Fresh Water Tank:	230 gallons - 1 tank(s)		

Accommodations

Total Cabins:	-	Crew Cabins:	-
Total Berths:	-	Crew Berths:	-
Total Sleeps:	-	Crew Sleeps:	-
Total Heads:	-	Crew Heads:	-
Captains Cabin:	No		

FEATURES

Deck Fittings

- Teak-laid transom platform, cockpit deck and steps to side decks
- Reversible electric anchor winch with foredeck and helm position controls
- Stemhead roller with automatic anchor launch and retrieve
- Self-stowing 40kg/88lbs Delta anchor with 40m of chain
- Storage lockers for fenders and ropes
- Foredeck seating and sunbathing area
- Stainless steel cleats, fairleads and handrails
- LED deck level lighting
- Freshwater deck/anchor wash

Cockpit

- U-shaped seating with teak folding table and folding directors chairs
- Sunbed aft with garage with electro-hydraulic door and tender launch system with electric winch below (3.3m tender)
- Twin transom gates leading to bathing platform with electro-hydraulic raise/lower mechanism, foldaway swimming ladder and hot and cold shower
- Wetbar including electric barbecue and top loading coolbox
- Waterproof speakers linked to deck saloon sound system

- Lockable gas strut assisted hatch to engine room, lazarette and optional crew cabin
- Lifteraft storage locker
- Cockpit cover

Helm Position

- Twin helm seats with electric adjustment for helmsman
- Helmsman's door to side deck and electric opening window to port
- Full engine instrumentation including fuel gauges, exhaust temperature, fuel contamination alarms and rudder position indicator
- Navigation system including colour radar, GPS and chartplotter (2 displays), VHF/RT, speed and distance log, echo sounder with alarm, autopilot and high speed magnetic compass
- Controls for bow thruster, windscreen wipers, bilge pump and trim tabs (with indicators)
- 24v and 240v control panel
- Red night lighting
- Toughened glass screen (clear for night vision)

Deck Saloon

- Stainless steel framed sliding doors to aft cockpit with integrated opening window aft of galley
- U-shaped sofa and coffee table
- L-shaped dining area with folding table
- Entertainment centre incorporating 49" UHD LED TV on electric raise/lower mechanism and DVD/radio/MP3 system with surround sound system
- Sideboard unit with bottle and glass storage, refrigerator and icemaker
- Electric opening roof

Galley

- 4-zone ceramic hob
- Combination microwave/convection oven with grill
- Twin stainless steel sinks with mixer tap
- Full height refrigerator/freezer
- Dishwasher
- Storage lockers, cupboards and drawers

Accommodation

- All cabins and bathrooms feature opening portholes
- All cabins feature 220/240v power points
- All mattresses pocket sprung (optional excluding crew)
- All bathrooms feature electric freshwater toilets, extractor fan and 240v shaver points

Owner's Stateroom

- Large double bed with drawers below
- Wardrobes with hanging and drawer storage
- Storage lockers and drawers
- Dressing table
- Sofa
- 40" UHD LED TV, DVD Blu-ray
- En suite bathroom

Forward Guest Cabin

- Large double bed with drawers below
- Wardrobe with shelves
- Dressing table
- Deck hatch
- Storage lockers and drawers
- En suite bathroom

Starboard Guest Cabin

- Two single beds with drawers below (with the option of double bed conversion)
- Wardrobe with shelves
- Storage lockers and drawers
- En suite bathroom with day access

Port Guest Cabin

- Two single beds with drawers below
- Wardrobe with shelf
- Storage lockers and drawers

Lower Accommodation Lobby

- Combination washer/dryer and storage area is fitted in the lobby area with the option of fitting separate washing machine and tumble dryer

Crew Cabin (Optional)

- Single bed, wardrobe and storage lockers
- Bathroom with shower, electric freshwater toilet and washbasin

Interior Finish

- Furniture in Rovere Oak with satin or high gloss finish. Walnut or Alba Oak available as an option
- Solid surface worktops and tiled floors in all guest bathrooms
- Solid surface worktops in galley
- Choice of high quality carpet and upholstery fabric from extensive range
- Blinds or sunscreens to all windows and portholes
- Timber-laid galley, saloon and helm floors
- Crew cabin fitted with non slip safety flooring

Power and Drive Systems

- 5-bladed propellers in nickel aluminium bronze
- Bow thruster (170Kgf/375lbf)
- Power-assisted electro-hydraulic steering system with hydraulic back-up
- Electronic engine and gear shift controls
- Dripless shaft seals
- Engine room extractor fan with electronic time delay

Electrical System

24 Volt:

- 4 x heavy duty batteries for engine starting
- 4 x heavy duty auxiliary batteries
- 80 amp battery charger charges both banks of batteries via an automatic switch charging system
- Remote battery master switches with control switch at main panel
- LED lighting throughout

220/240 Volt:

- 13.5kW diesel generator in own starting battery and specially silenced exhaust
- Earth leakage safety trip, polarity check system, circuit breaker on all circuits
- Power points in all areas

Fuel System

- Twin fuel tanks (in NS8 marine grade alloy) with interconnection system giving 902 gal/1083 US gal/4100l capacity
- Fuel fillers on port and starboard side decks
- High capacity duplex fuel filters/water traps with audible and visual fuel contamination warning system
- Remote fuel cocks in cockpit locker

Water System

- 176 gal/211 US gal/800l plus 16gal/19 US gal/73l hot water calorifier, heated by engines and 240v immersion heater
- Water level gauge
- Deck filler
- Electric freshwater WC system with 60 gal/72 US gal/272l holding tank

Fire Extinguishers

- Automatic/manual override fire extinguishers in engine room with warning system at helm position
- Hand-operated fire extinguishers (6) in all cabins, galley and helm position

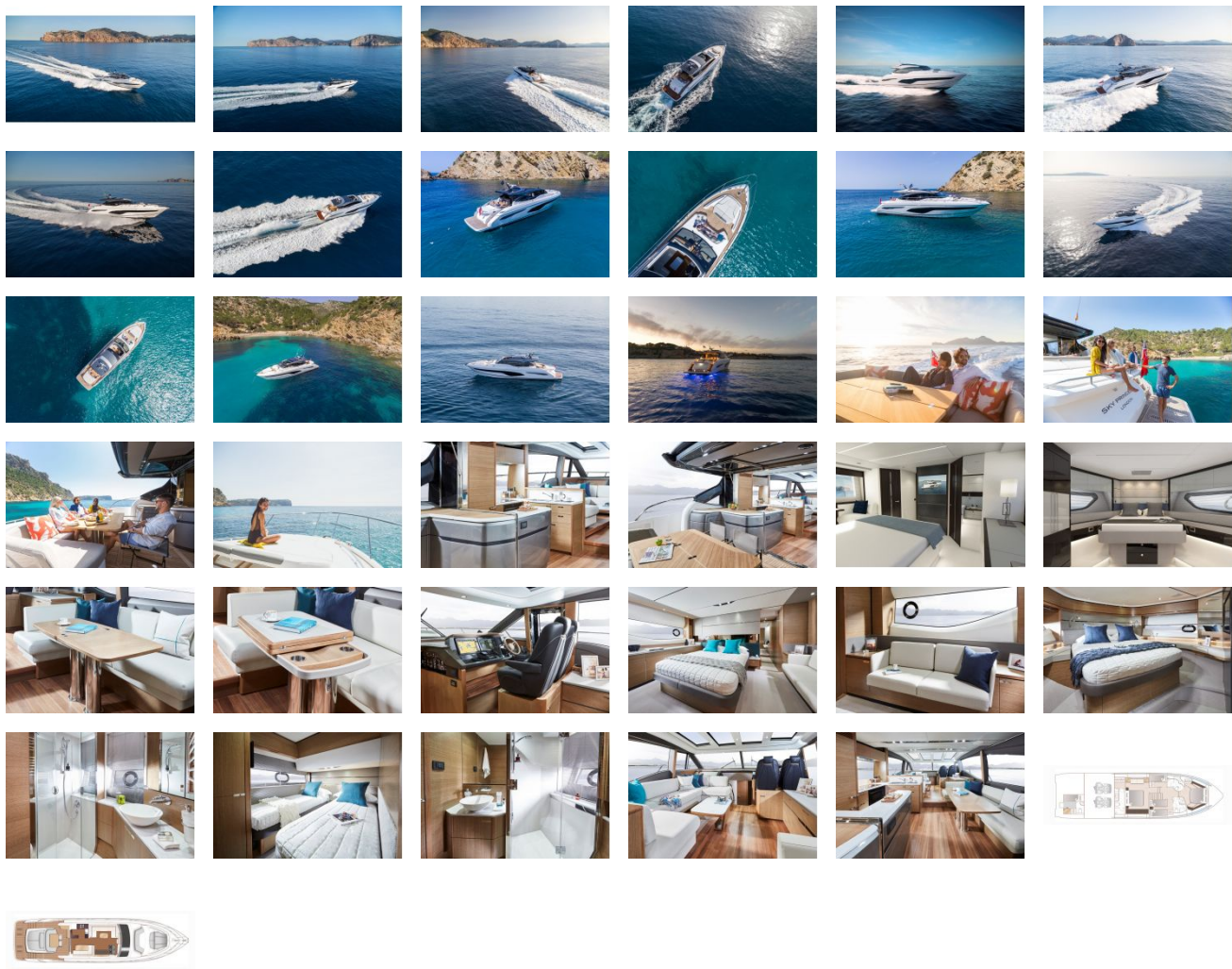
Bilge Pumps

- Automatic electric bilge pumps (6)
- High capacity manual bilge pump with valve system and suction points in same areas

Other Items Supplied as Standard

- Set of cutlery, crockery and glasses (8)
- Ensign staff
- Fenders (6) and wraps (4)
- First aid kit
- Tool kit
- Set of manuals
- Quilted bedspreads supplied to all cabins (except optional crew cabin)

GALLERY



Jefferson Beach Yacht Sales
24400 Jefferson Avenue,
St. Clair Shores, MI 48080
Phone: 866-490-5297