

Beneteau Oceanis Yacht 62

Boat Type: Cruiser



OVERVIEW

This new world designed by Beneteau stems from a collaboration between Berret Racoupeau Yacht Design and the Italian stylist Pierrangelo Andreani. The first in the range, the Oceanis Yacht 62 presents a new art of extravagance at sea.

SPECIFICATIONS

Basic Information

Manufacturer:	Beneteau	Boat Type:	Cruiser
Model:	Oceanis Yacht 62	Hull Material:	Fiberglass
Year:	2020	Hull Type:	
Category:	Sail		

Dimensions & Weight

Length:	62.00 ft	Draft - max:	9 ft 9 in - 2.97 meter
LOA:	62 ft 10 in - 19.15 meter	Bridge Clearance:	-
Beam:	17 ft 6 in - 5.33 meter	Dry Weight:	-
Deadrise Aft:	-		

Tank Capacities

Fuel Tank:	264 gallons - 1 tank(s)	Holding Tank:	-
Fresh Water Tank:	280 gallons - 1 tank(s)		

Accommodations

Total Cabins:	-	Crew Cabins:	-
Total Berths:	-	Crew Berths:	-
Total Sleeps:	-	Crew Sleeps:	-
Total Heads:	-	Crew Heads:	-
Captains Cabin:	No		

FEATURES

CONSTRUCTION

Design made following European Directive requirements and according to CE certification.

Composition: polyester resin

- Infused balsa sandwich hull
- Infused solid laminate base of hull
- Deck in balsa and fiberglass sandwich covered in "diamond point" type non-slip surface
- Screwed, glued and bolted polyester hull-to-deck joint
- Cast iron keel fixed with bolts and stainless steel backing plates
- Twin rudders affixed with stainless steel stock
- White hull

DECK FITTINGS

All the sail trim of the Oceanis 62 is brought back to the helm stations.

Teak with black caulking

Rigging

- Traditional 9/10ths tapered anodized aluminium mast - deck-stepped - 3 sets of swept back spreaders, steaming light
- Folding mast steps
- Anodized aluminum boom
- Stainless steel standing rigging
- Split backstay (hydraulic option)
- Rigid boom vang (hydraulic option)
- Genoa furler (electrical option) - drum on deck
- 2 Stand-up blocks on mainsheet arch
- 2 Genoa tracks with piston adjusted traveller cars - 2 genoa sheet turning blocks
- Complete running rigging: - 2:1 Dyneema purchase mainsail halyard - Dyneema genoa halyard on tensioning rail - Boom topping lift - Mainsheet - 2 Genoa sheets (2 single-line reef - 1 dual-line reef)
- 9 Clutches (2 as an option for staysail halyard and spinnaker halyard)
- 2 rope tail bags
- Preparation for downwind sail rigging (asymmetrical spinnaker - Code 0)
- 2 Flag halyards

Sails

- Dacron furling genoa, double thickness with UV protection strip
- Fully-battened Dacron mainsail with logo, double thickness
- Lazy Jack System and Lazy bag in Natural color

Winches

(accessible from each helm station)

- 2 Electric genoa sheet winches (Code 0 / spinnaker) - self tailing 70.2 STC
- 1 Starboard manual maneuver winch - 46.2 STC • 1 Port electric primary winch (H50.2 STECH)
- 2 Speedgrip winch handles
- 2 Winch handle holders

Mooring - anchoring gear

- Stainless steel bow sprit with single stem roller, Tack for asymmetrical spinnaker or Code 0
- Self-draining chain locker
- Lockable access panel to the chain locker in the sail locker
- 24 V - 2 000 W vertical electric windlass - Remote control
- Windlass control with chain counter in cockpit
- 8 aluminium mooring cleats (400 mm / 1'4")

Fore sail locker

- Access through deck hatch (T70), Passage width: 62 cm / 2'
- Stainless steel ladder
- Locker fitted with stowage designed for lines, fenders, cushions, sails, etc.
- Direct access to the anchor well, Panel: T44

Safety on deck

- 1 Stainless steel pulpit in 2 parts, open at the bow (750 mm - 28 mm diameter)
- 2 Stainless steel aft pushpits (750 mm - 28 mm diameter)
- 1 Ring lifebuoy bracket
- 1 Ensign Mount
- Triple guard wires and stainless steel stanchions (Height: 750 mm) - side boarding gate on either side

- 4 Stainless steel handrails on deck: - 2 on the coachroof - 2 each side of the forward sun pad
- 4 Stainless steel handrails on fixed arch

Cockpit

- Self-bailing cockpit, natural solid wood decked
- Liferaft stowage in locker in the cockpit sole
- 2 Lockers in under the cockpit seats, Gas locker strut opening
- 1 Locker beside the port helm console
- 1 Gas locker beside the starboard helm console
- 2 Natural solid wood slatted cockpit benches
- 2 Helm stations:
 - Steering wheel in stainless steel (1100 mm / 3'7" diameter)
 - Leather covered
 - Steering lock
 - Cable transmission system
 - Lines locker
 - Cup holder
- Deck plates for tiller system - Emergency steering
- Engine throttle and control panel on starboard
- 2 Solid wood cockpit tables with fixed leg (option to convert to sunpad):
 - 2 leaves
 - Hand rail
 - Cup holders under leaves
- LED lighting under arch & LED lights in cockpit, transom, and forward sun pad
- Cockpit fridge near the port helm station, 40 L, top opening

- 2 Sunbed mattresses for companionway, Diamante Snow
- PMMA companionway doors & sliding companionway hatch
- 6 Waterproof speakers: 2 Bose loudspeakers under seats near the companionway, 2 Fusion loudspeakers at the helm stations, 2 Fusion loudspeakers at the mast foot
- Deck wash with fresh water / sea water

Aft cockpit

- Large stowage locker under aft central seat (optional outside galley module) - Gas locker strut opening
- 2 Lifting helm seats for access to the bathing platform steps
- Shore power socket

Aft transom

- Electric Transom with gas strut, fully opens for direct ocean access
- Doubles as a bathing platform with access steps aft of each helm station
- Access to the tender garage
- Solid wood swim platform
- 1 Built-in stainless steel bathing ladder
- 1 Hot and cold cockpit shower

Tender garage

- 1 Access hatch in the cockpit sole between the 2 helm stations for access without opening aft platform
- Tender garage: 3,49 x 1,70 m / 11'5" x 5'7"
- 3 Lights
- Tender compartment curtain and textile stowage bags
- Inflater / deflater for tender

INTERIOR

Alpi walnut woodwork

Rovere Alevé Parquet type laminated floorboards

Commando natural upholstery with Météor grey piping

Ceiling, hull and bulkheads coated with Météor grey and beige fabric linings

Direct and indirect LED lighting

Companionway

- Headroom: 2,08 m / 6'10"
- Wooden companionway with 6 molded wood steps
- Météor grey leather sheathed stainless steel companionway handrails

Port salon

- Headroom: 2,06 m / 6'9"
- L-shaped salon bench seat with armrests
- Central settee with armrests
- Central unit with built-in bar
- Luxe folding salon table with electric legs
- Open storage compartment along the hull - Storage space under seats and sofa
- 1 panoramic skylight with blackout blinds / mosquito nets forward
- 3 large hull portholes with blackout blinds
- 1 Fixed coachroof side window with pleated blind (manual)
- 1 Fixed coachroof side window with blind
- 1 opening porthole in side window
- Météor grey mast cover, built-in bookshelf, LED strip

- 3 LED reading lights
- 11 LED ceiling lights
- 1 LED strip lights under upper lockers
- 1 110 V Power outlet

Chart table (portside)

- Opening lid - glove boxes - storage - Molded wood fiddle with Météor leather sheathed stainless steel railing
- Swivelling navigator seat
- Electrical panel with all on-board functions, back-lit
- Navigation instrument panel (optional instruments)
- 1 coachroof window
- 2 USB charging sockets
- 1 LED reading light
- 3 LED ceiling lights
- 1 110 V Power outlet
- Fusion player + Bose 2.1 interior loudspeakers + 24/12V inverter (50 Amp)

Galley

- Headroom: 2,06 m / 6'9"
- 2 Météor leather sheathed stainless steel handrails
- Oven / grill / 3 burner stove on stainless steel Luxe mounting (retractable top and front)
- Cupboard and drawers for pans and lids
- Compartmental bins
- Cooler with cooling unit (1 x 300 L - 2 openings from the top, 1 front door)
- Lacquered upper units

- Corian Deep Mink counter-top with built-in fiddles
- Large rectangular stainless steel sink, with hot/cold water mixer tap (2 covers in Corian)
- Freshwater filter
- 3 Hull portholes with blackout blinds
- 1 Fixed coachroof side window with pleated blind (manual)
- 5 LED ceiling lights
- 1 LED strip light under upper lockers
- 2 x 2 110V Sockets

Technical locker

- Near the aft starboard cabin entrance
- Access to all the circuit breakers and electrical panel + generator room
- 3 LED ceiling lights

Starboard area at the bottom of the companionway

- 1 oilskins locker + shelf with fiddle

Forecabin entrance

- 1 Large storage cupboard, 2 doors (replaced by washer dryer or fridge depending on chosen options)
- 1 bottle storage under floor
- 1 LED ceiling light

Owner's cabin

- Headroom: 2,11 m / 6'11"
- Central double bed (2,05 x 1,72 m / 6'9" x 5'8" - head forward) - slatted bed base - marine mattress (thickness: 120 mm / 5") - Padded bed headboard

- Shelving unit - drawers - glove boxes - 2 drawers under the bed
- Opening of the bed assisted by gas strut for technical equipment under the bed
- to starboard: wardrobe, cupboard, shoe cabinet - to port: hanging locker
- Large mirror on entrance bulkhead
- 2 Hull portholes with Roman blackout blinds
- 2 Opening deck hatches with blackout blinds / mosquito screens
- 4 Fixed coachroof windows with curtains
- Indirect lighting
- 5 LED ceiling lights
- 2 LED reading lights, 2 reading lights
- 1 LED strip lights under upper lockers
- 1 Dorade
- 1 110 V Power outlet, 4 USB sockets

A furnishing option may be added against the entrance bulkhead: Sideboard, or Desk with seat, or Sofa.

Forward owner's head compartment

- Headroom: 2,21 m / 7'3"
- Private head en-suite from forward cabin
- Separate shower: molded shower tray - mixing tap hot/cold water - shower door
- Teak slatted seat and shower flooring
- Electric toilet Tecma (fresh water / Sea water)
- 1 Washbasin - Counter-top in Corian Deep Mink - mixing tap hot/cold water
- 2 Mirrors
- Toilet accessories - towel rail - hook
- Cupboard units - shelving unit

- 1 Opening deck hatch with blackout blind / mosquito net
- 1 Fixed translucent coachroof window
- 1 Hull port with blackout blind
- 3 LED ceiling lights
- 1 LED strip light under mirrors
- 1 110 V Power outlet
- 1 Dorade

Port aft cabin

- Headroom: 1,91 m / 6'3"
- 1 Double bed (2,04 x 1,40 m / 6'8" x 4'7") - slatted bed base - marine mattress (thickness: 120 mm / 5") - Padded bed headboard
- Hanging locker - Shelving unit - Drawer under the bed
- 1 Opening porthole on cockpit with blackout curtain
- 1 Opening porthole to coachroof with blackout blind
- 3 Hull portholes, 1 with a blackout curtain
- Light tunnel with 2 fixed windows, stowage compartment, technical access hatch and blackout blind
- 3 LED ceiling lights
- 2 LED reading lights
- 1 LED strip light in ceiling
- 1 110 V Power outlet, 2 USB sockets

Aft port head compartment

- Headroom: 2,15 m / 7'1"
- Private heads en-suite from the port side cabin + access through salon
- Separate shower: molded shower tray - mixing tap hot/cold water - shower door

- Teak slatted seat and shower flooring
- Electric toilet Tecma (fresh water / Sea water)
- 1 Sink - Counter-top in Corian Deep Mink - mixing tap hot/cold water
- 2 Mirrors
- Toilet accessories - towel rail - hook
- Cupboard units - shelving unit
- 1 Opening coachroof port with blackout blind
- 1 Hull port with blind
- 3 LED ceiling lights
- 1 LED strip light under mirrors
- 1 110 V Power outlet

Starboard aft cabin

- Headroom: 1,91 m / 6'3"
- 1 Double bed (2,04 x 1,40 m / 6'8" x 4'7") - slatted bed base - marine mattress (thickness: 120 mm / 5") - Padded bed headboard
- Hanging locker - shelving unit - drawer under the bed
- 1 Opening porthole on cockpit with blackout curtain
- 1 Opening porthole to coachroof with blackout blind
- 3 Hull portholes, 1 with a blackout curtain
- Light tunnel with 1 fixed windows, stowage compartment, technical access hatch and blackout blind
- 3 LED ceiling lights
- 2 LED reading lights
- 1 LED strip light in ceiling
- 1 110 V Power outlet, 2 USB sockets

Aft starboard head compartment

- Headroom: 2,15 m / 7'1"
- Private head compartment accessible from starboard aft cabin
- Separate shower: molded shower tray - mixing tap hot/cold water - shower door
- Teak slatted seat and shower flooring
- Electric toilet Tecma (fresh water / Sea water)
- 1 Rigid sewage tank (80 L / 21 US Gal)
- 1 Sink - Counter-top in Corian Deep Mink - mixing tap hot/cold water
- 2 Mirrors
- Toilet accessories - towel rail - hook
- Cupboard units - shelving unit
- 1 Opening coachroof port
- 1 Hull port with blind
- 3 LED ceiling lights
- 1 LED strip light under mirrors
- 1 110 V Power outlet

Side cabin: Bunk beds

- Headroom: 2,15 m / 7'1"
- Bunk beds - marine mattress
- Shelving unit
- Full height hanging locker
- Storage under the floor
- 1 Opening coachroof port with blackout blind
- 1 Hull port with blind

- 3 LED ceiling lights
- 2 LED reading lights
- 1 110 V Power outlet

ELECTRICITY

- 12 V Circuit
- 24 V Circuit
- 110 V Circuit
- Ducts with mouse lines for threading cables of electrics or navigation electronics optional extras
- 1 110 V electrical panel: breaker - voltmeter
- 1 24 V electrical panel: breaker - voltmeter - water gauge - fuel gauge - 24 v charging current and consumption current measurement
- Compartment for fitting electrical controls in starboard technical area

12 V Circuit (engine use)

- Standard equipment:
- 1 Engine battery (12 V - 140 Amp)
- Battery switch (from the port side aft cabin)
- 1 Battery charger (12 V - 25 Amp) in starboard technical area

24 V Circuit

- Standard equipment: electric windlass - pumps - navigation lights - lighting - refrigeration units
- 1 Service 24V battery set - 560 Amp - AGM (12 V - 8 x 140 Amp batteries)
- Battery switch (from the port side aft cabin)
- Load balancer (24 V) in starboard technical area
- 2 Battery chargers (24 V - 60 Amp) in starboard technical area

110 V Circuit

- Standard equipment: 110V Sockets - water heater

- 110V Sockets:

Forward cabin x 1, Forward head x 1, Port salon x 1, Galley x 4, Chart table x 1, Port aft cabin x 1, Aft port head compartment x 1, Starboard aft cabin x 1, Aft starboard head compartment x 1

Lights

- LED interior lights: overhead lights, reading lights
- LED courtesy lights: under the companionway steps, in the hanging lockers
- Outside lighting:
 - LED: 3 lighting under fixed arch, courtesy light in cockpit
 - Standard bulb: deck light at mid mast
 - LED navigation lights - control from the chart table
 - 1 LED all horizon mast head light
 - 1 LED mid-mast automatic top light
 - 1 LED stern light on aft starboard pulpit

ENGINE

- Yanmar Engine: 160 HP, 6 cylinders, propeller shaft
- Engine electrical control and switchboard at the starboard helm (dual controls on port side option)
- Bow thruster
- Engine compartment: foam soundproofing: 40 mm - ventilation: 4 air intakes & 2 air extractors
- 1 Alternator (12 V - 150 Amp)
- 1 Alternator (24 V - 90 Amp)
- 3 Fuel tanks (2 x 230 L + 1 x 540 L / 2 x 61 US Gal +1x 143 US Gal) - Electronic gauge - 3 Deck fillers - Tank

selection with "¼ turn" by-pass valves • Filters: Sea water - Diesel - Water separator

- 3 folding blades propeller
- Access to the engine compartment: Companionway (gas locker strut opening) & starboard machinery compartment

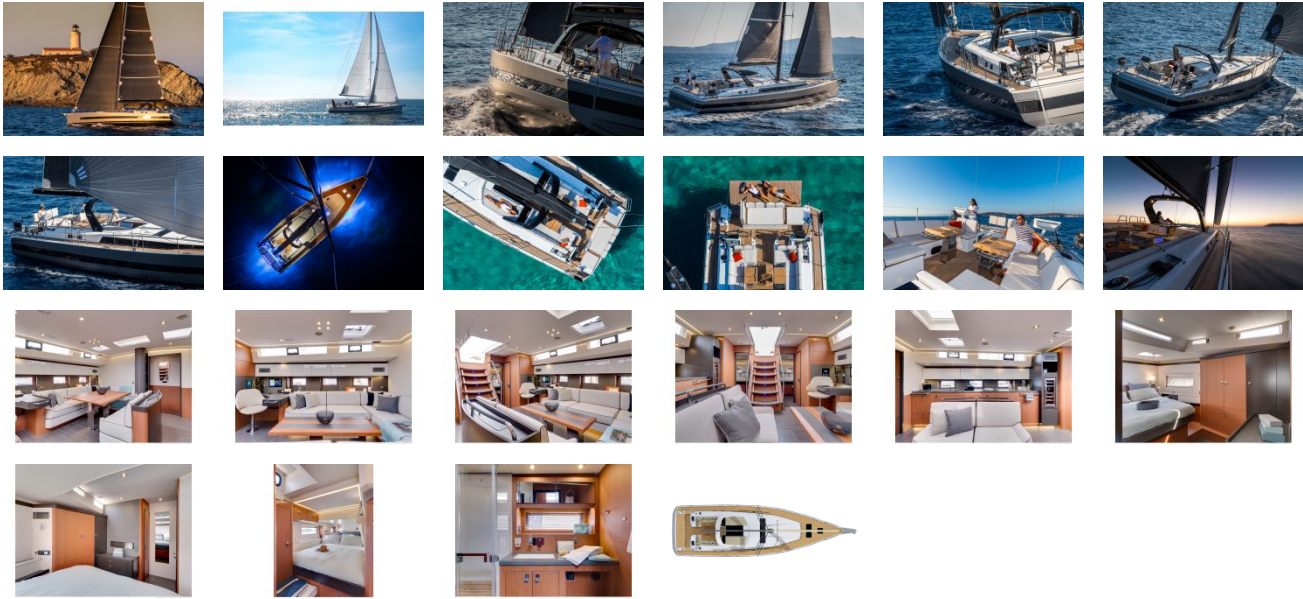
PLUMBING

- 4 rotomolded freshwater tanks (1 x 400 L + 3 x 200 L / 1 x 106 US Gal + 3 x 53 US Gal) - 4 Deck fillers - Tank selection with "¼ turn" by-pass valves
- Waterpressure system - expansion tank - inline filter
- 60 L Electric water heater (16 US Gal)
- 1 Rigid 80 L / 21 US Gal black water holding tank for each WC
- Automatic electric shower drain pumps - time delay
- 2 Electric bilge pumps - 1 manual bilge pump

GAS

- Gas bottle locker in cockpit
- Regulator and solenoid

GALLERY



ANNAPOLIS
Yacht Sales

Annapolis Yacht Sales
7350 Edgewood Rd.
Annapolis, MD 21403
Phone: 410.267.8181