



Annapolis Yacht Sales
7350 Edgewood Rd.
Annapolis, MD 21403
Phone: 410.267.8181

Beneteau Oceanis 41.1

Boat Type: Cruiser



OVERVIEW

The Oceanis 41.1 sets the highest standard for mid-sized yachts. She offers the most in comfort, performance and customizable space at an even more competitive price.

Constructed with the mast slightly aft, her self-tacking jib and German sheet system built on a Finot Conq- designed chined hull guarantee impeccable balance in all wind conditions. Her cockpit is the largest of any boat her size. To further extend outdoor space, the transom once lowered, doubles as a swim platform offering direct access to the water.

Ample room below deck offers the choice of a two or three cabins layout with one or two heads. Through six large portholes, natural light floods the interior keeping below deck as bright as above. Plenty of organized storage, large cockpit locker and U-shaped salon bench efficiently utilize space. The option to customize equipment, wood and fabric finishes ensure the 41.1 is unique in every aspect for the ultimate in luxury.

SPECIFICATIONS

Basic Information

Manufacturer:	Beneteau	Boat Type:	Cruiser
Model:	Oceanis 41.1	Hull Material:	
Year:	2020	Hull Type:	
Category:	Sail		

Dimensions & Weight

Length:	41.00 ft	Draft - max:	7 ft 2 in - 2.19 meter
LOA:	40 ft 9 in - 12.42 meter	Bridge Clearance:	-
Beam:	13 ft 9 in - 4.19 meter	Dry Weight:	17271 ft
Deadrise Aft:	-		

Tank Capacities

Fuel Tank:	53 gallons - 1 tank(s)	Holding Tank:	-
Fresh Water Tank:	63 gallons - 1 tank(s)		

Accommodations

Total Cabins:	-	Crew Cabins:	-
Total Berths:	-	Crew Berths:	-
Total Sleeps:	-	Crew Sleeps:	-
Total Heads:	-	Crew Heads:	-
Captains Cabin:	No		

FEATURES

STANDARD EQUIPMENT

CONSTRUCTION

- Design made following European Directive requirements and according to CE certification
- Monolithic hull in polyester
- Infused structural hull liner bonded to the hull
- Injected deck construction in glass fiber and Saerform foam sandwich, covered with non-slip diamond pattern
- Cast iron keel fixed with bolts and stainless steel backing plates
- Rudder hung with glass composite stock
- White hull - Grey metal hull decoration

DECK EQUIPMENT

RIGGING

- Standard mast 9/10 anodized aluminium deck stepped, 2 aft-swept spreaders
- Anodized aluminum boom
- Discontinuous stainless steel standing rigging

- 2 Backstay: Bridle
- Rigid boom vang
- Genoa furling system with drum on the deck
- 1 Stand-Up block for mainsail on fixed composite arch
- 2 Genoa tracks with piston adjusted traveller cars
- 2 Genoa sheet turning blocks
- Rigging run back to cockpit (except boom topping lift)
- Complete running rigging: Main halyard, Genoa halyard with clutch on mast and cleat, Boom topping lift with cleat on mast, Mainsheet, 2 Genoa sheets 2 Reefing lines
- 6 Clutches
- 2 Flag halyards

WINCHES

- 2 Self-tailing genoa sheet winches (H46.2 STA)
- 1 Self tailing winch (H40.2 STA), starboard
- 2 Aluminium Speed Grip winch handles
- 2 Winch handle holders

SAILS

- Furling genoa with UV protective strip, Natural color
- Semi full batten sail with slider and roller slider (with logo)
- Lazy Jack System and Lazy bag in Natural color

MOORING - ANCHORING GEAR

- Self-draining chain locker - Clench bolt - Hatch cover
- Single roller stainless steel bow fitting with offset roller
- 6 Aluminum mooring cleats - Stainless steel chafing plate

SAFETY ON DECK

- 1 Open stainless steel pulpit
- 2 Stainless steel aft pushpits
- 1 Ring lifebuoy bracket
- Welded ring on pushpit for flag
- Double life lines and stainless steel stanchions - Side boarding gate on either side
- Emergency ladder (Pushpit)

COCKPIT

- Self-bailing cockpit
- 1 Sail locker (to port)
- 2 Lockers in cockpit floor under helm's feet
- 1 Liferaft locker under starboard seat (0,95 x 0,52 x 0,33 m / 3'1" x 1'8" x 1'1")
- 1 Gas locker
- Natural solid wood slatted cockpit benches
- 2 Steering wheel consoles: Stainless steel steering wheels - 900 mm diameter - Leather covered - Steering gear at the helm station - Metal cable transmission system - Stainless steel handrail - Navigation instrument pod (optional instruments) - Cup holder
- 1 Deck filler for access to tiller system

- 1 Emergency tiller
- 2 Steering compass on consoles
- Portside engine control and control panel
- Cockpit table, stainless steel structure, 2 leaves, Cup holders
- 1 Mainsail arch (fixed, Composite, Built-in lighting)
- 2 Hinged PMMA companionway doors - Sliding hatch made of PMMA

SWIM PLATFORM / STERN DECK

- Fully opening transom, convertible into swim platform (2,76 x 0,74 m / 9'1" x 2'5")
- Manually operated with gas cylinder assist
- Natural solid wood decking on swim platform
- 1 Stainless steel integrated telescopic swimming ladder

INTERIOR

- Woodwork Alpi Mahogany
- Parquet type laminated floors
- Fabric upholstery
- Mattress in cabins, HR35kg/m³ foam

COMPANIONWAY

Headroom: 1,92 m / 6'4"

- Wooden salon companionway with molded wood hanging steps with non-slip surface
- 2 Leather covered stainless steel handrails

SALON

Headroom: 1,93 m / 6'4"

- U-shaped salon bench - Double density foam
- Salon table, 1 folding leaf - Varnished wooden top - Central and side storages, Bottle holder
- Mirror on starboard bulkhead
- Storage space along the hull - Storage under bench seats
- 2 Panoramic coachroof windows with curtains
- 2 Hull portholes with curtain
- 2 Opening portholes on coaming in side windows
- 1 Opening deck hatch with fan, mosquito screen/blind

CHART TABLE - PORTSIDE

- Table with flap - Molded wood fiddle
- Switch panel on bulkhead for access to electrical functions
- 1 Reading light
- 2 USB sockets

GALLEY - PORTSIDE

Headroom: 1,94 m / 6'4"

- L-shaped kitchen
- Countertop of synthetic surfaces
- 1 rectangular stainless steel sink - 1 Mixer tap cold water / hot water, under pressure
- 1 Gas stove 2 burners - Stainless steel oven on gimbal - Stainless steel protection handrail
- 1 190 L ice box / 50 US Gal, top opening + Freezer (10 L / 3 US Gal)
- Fitted cupboards and closed cubbyholes - Garbage bin
- 1 Lower unit: 2 Drawers, 1 Storage
- 1 Opening portlight with curtains in the coachroof side window
- Storage space along the hull, with sliding doors

STARBOARD AFT HEAD COMPARTMENT

Headroom: 1,85 m / 6'1"

- Access from the salon or the starboard aft cabin
- Separate shower - 1 Mixing tap hot water / Cold water
- 1 Manual marine toilet
- 1 Rigid holding tank 80L / 21 US Gal
- Washbasin - 1 mixing tap hot/cold water
- Cabinet
- 2 Mirrors
- Toilet accessories
- 1 Opening portlight with curtains in the coachroof side window

STARBOARD AFT CABIN

Headroom: 1,92 m / 6'4"

- 1 Double bed (2,07 x 1,47 x 1,11 m / 6'9" x 4'10" x 3'10")
- Access door to starboard aft head
- Hanging locker - Open cubbyholes
- 1 Bed access sideboard
- 1 Hull porthole with curtain
- 1 Cockpit windows with curtains
- 1 Porthole opening onto cockpit with curtain
- 1 Deck hatch with mosquito screen/blind

2 cabin layout

AFT-GALLEY (PORT AFT)

Headroom: 1,92 m / 6'4"

- Access via galley
- Large storage area (1 Hanging locker, Cupboard units)
- Space for dishwasher (optional) in place of dresser
- Access door to port cockpit locker
- 1 Deck hatch with mosquito screen/blind

3 cabin layout

PORT AFT CABIN Headroom: 1,92 m / 6'4"

- Double bed - Port cabin (2,07 x 1,32 x 1,10 m / 6'9" x 4'4" x 3'7")
- 1 Bed access sideboard
- Cupboard - Hanging locker - Closed cubbyholes
- 1 Hull porthole with curtain
- 1 Cockpit porthole with curtain
- 1 Deck hatch with mosquito screen/blind
- 1 Cockpit windows with curtains

1 head layout

FORWARD CABIN

Headroom: 1,88 m / 6'2"

- Central double bed (2,00 x 1,50 m / 6'7" x 4'11")
- 1 Hanging locker (portside), 1 Cupboard with shelves (starboard), Open lockers along the hull and bedhead, 1 Storage space under bed
- 1 Dressing table
- 3 Flush deck hatches with mosquito screen/blind
- 2 Hull portholes with curtain

2 head layout

FORWARD CABIN

Headroom: 1,88 m / 6'2"

- Double bed (2,12 x 1,50 x 1,25 m / 6'11" x 4'11" x 4'1")
- 1 Cupboard: ½ Hanging locker, ½ Shelves.
- 1 Storage space under bed
- Open storage compartment along the hull
- 1 Closed locker
- 2 Opening hatches with blind / Mosquito screen
- 2 Hull portholes with curtain

STARBOARD FORWARD HEAD COMPARTMENT

Headroom: 1,81 m / 5'11"

- Access through forward cabin
- Manual marine toilet
- Molded basin - mixing tap hot/cold water
- 1 Mirror
- 1 Cabinet
- Toilet accessories
- Cupboard
- 1 Opening porthole on roof with fan, mosquito blind

ENGINE

- Yanmar Engine (Diesel): 45 CV/HP Common rail
- Engine control - Control panel in cockpit
- Engine compartment: Soundproofing foam - Ventilation: 1 air intake and 1 air outlet
- 1 Alternator 12 V / 125 Amp
- 1 Rotomolded diesel tank 200 L / 53 US Gal (under port aft berth) - Electronic gauge - Low level alarm - 1 Deck filler
- Filters: Sea water - Diesel - Water separator
- Fixed three blade propeller
- 1 Engine access through companionway (opening with 2 gas pistons) - 2 Engine access through aft cabins

ELECTRICITY

- 12 V Circuit
- 2 Service batteries 105 Amp AGM
- 1 Engine battery 105 Amp AGM
- 1 Load balancer
- 12 V Electrical panel (Fuses - Voltmeter - Water gauge - Fuel gauge - Battery warning - Fuel warning - Water warning)
- 1 12 V Power outlet
- LED lighting: Overhead lights - Reading lights
- Navigation lights (LED): 1 Forward and aft navigation lights - 1 Steaming light - 1 Mooring light on masthead
- Wire runs for optional cables
- 1 Deck searchlight

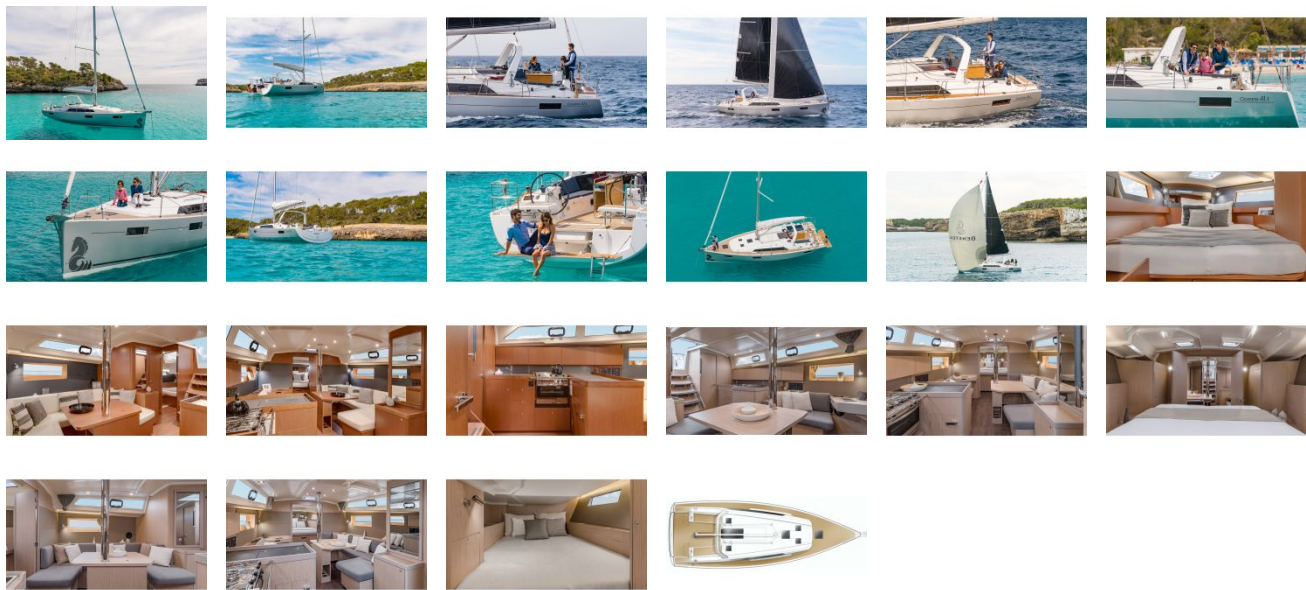
PLUMBING

- 1 Rotomolded freshwater tank (200 L / 53 US Gal Forward cabin) - 1 Deck filler
- Waterpressure system - Expansion tank - Inline filter
- 40 L Electric water heater / 11 US Gal (engine use)
- 1 Rigid holding tank 80L / 21 US Gal (Aft starboard head compartment)
- Delayed shower draining and electric shower drain pumps
- 1 Electric bilge pump - 1 Manual bilge pump

GAS

- 1 Box for 2 gas bottles in the cockpit (0,28 x 0,44 mm diameter / 11" x 1'5")
- Regulator and solenoid

GALLERY



Annapolis Yacht Sales
7350 Edgewood Rd.
Annapolis, MD 21403
Phone: 410.267.8181