



Annapolis Yacht Sales
7350 Edgewood Rd.
Annapolis, MD 21403
Phone: 410.267.8181

Beneteau Oceanis 51.1

Boat Type: Cruiser



OVERVIEW

With taut lines, a new stepped hull and a stylish deck plan, the Oceanis 51.1 is the first of a new generation. Easy to handle, comfortable and smart, the number of customizations available has been increased to provide more than 700 combinations.

One third of the Oceanis 51.1's hull is now stepped. In addition to the aesthetics of this flared shape, the new hull creates additional interior space allowing for exciting new layouts on a boat this size. With emphasis on taut cruiser lines, she is a joy to move around and reassuringly safe. The spacious cockpit, many relaxation and sun bathing areas, as well as an aft swim platform, promise true comfort.

The large hull portholes bathe the boat in light and elegantly emphasize the interior design by Nautia Design creating a wonderful atmosphere. A choice of brushed oak or mahogany woodwork ambiances increases the opportunities for customization.

SPECIFICATIONS

Basic Information

Manufacturer:	Beneteau	Boat Type:	Cruiser
Model:	Oceanis 51.1	Hull Material:	
Year:	2020	Hull Type:	
Category:	Sail		

Dimensions & Weight

Length:	51.00 ft	Draft - max:	7 ft 7 in - 2.31 meter
LOA:	52 ft 4 in - 15.95 meter	Bridge Clearance:	-
Beam:	15 ft 9 in - 4.8 meter	Dry Weight:	-
Deadrise Aft:	-		

Tank Capacities

Fuel Tank:	53 gallons - 1 tank(s)	Holding Tank:	-
Fresh Water Tank:	116 gallons - 1 tank(s)		

Accommodations

Total Cabins:	-	Crew Cabins:	-
Total Berths:	-	Crew Berths:	-
Total Sleeps:	-	Crew Sleeps:	-
Total Heads:	-	Crew Heads:	-
Captains Cabin:	No		

FEATURES

STANDARD EQUIPMENT

CONSTRUCTION

- Design made following European Directive requirements and according to CE certification
- Vacuum infused hull (GRP / Sandwich balsa wood)
- Vacuum infused structural inner liner (Fabric - resin) bonded to the hull
- Injected deck construction in glass fiber and Saerform foam sandwich, covered with non-slip diamond pattern
- Cast iron keel fixed with bolts and stainless steel backing plates
- Twin rudders affixed with stainless steel stock
- White hull - Grey metal hull decoration
- 8 Hull portholes

DECK EQUIPMENT

RIGGING

- Anodized aluminium mast, deck stepped with in-mast furling system, 2 Aft swept spreaders
- Anodized aluminum boom

- Discontinuous stainless steel standing rigging
- Split backstay
- Rigid boom vang
- Self-tacking jib with on-deck furler
- 2 Stand Up mainsheet blocks on the coachroof
- 1 Self-tacking jib track with traveller
- All lines lead back to the helm stations (except boom topping lift and genoa halyard)
- Complete running rigging: Main halyard, Genoa halyard with mast-tie rail, Boom topping lift with cleat on mast, Mainsheet, 1 Self-tacking jib sheet
- 6 Clutches
- Halyard covers
- 2 Flag halyards

WINCHES

- 1 Self tailing winch (H46.2 STA) at each helm station
- 1 Aluminium Speed Grip winch handle
- 2 Winch handle holders

SAILS

- Dacron furling mainsail with Natural UV protection
- Dacron self-tacking jib with Natural UV protection

MOORING - ANCHORING GEAR

- Self-draining chain locker - Clench bolt - Hatch cover
- Single roller stainless steel bow fitting with offset roller
- 12 V - 1 500 W vertical electric windlass - Remote control
- 6 Aluminum mooring cleats, Length: 400 mm / 15"3/4 - Stainless steel chafing plate

SAIL LOCKER

- Access through deck hatch T70, Passage width: 62 cm / 2'
- Stainless steel ladder
- Shelving unit
- Lighting
- 1 115 V Power outlet

SAFETY ON DECK

- 1 Open stainless steel pulpit
- 2 Stainless steel aft pushpits
- 2 stainless steel handrails on coachroof
- 1 Ring lifebuoy bracket
- Welded ring on pushpit for flag
- Double life lines and stainless steel stanchions, 650 mm / 2'2" - Side boarding gate on either side
- Emergency ladder on pushpit

COCKPIT

- Self-bailing cockpit

- 2 Watertight lockers under the cockpit benches
- 1 Locker in cockpit bottom
- 1 Gas compartment under port helmsman seat
- Natural solid wood slatted cockpit benches
- Solid wood slatted helm seats with starboard storage locker
- Foldaway helmsman foot chock
- 2 Steering wheel consoles: Stainless steel steering wheels (900 mm diameter / 2'11") - Anthracite leather covering
- Steering gear at the helm station - Steering line transmission system - Stainless steel handrail
- 2 Deck accesses for emergency tiller
- 1 Emergency tiller
- 1 Steering compass on the cockpit table
- Engine throttle and control panel on starboard
- Cockpit table, stainless steel support, 2 Compact leaves with teak finish, lighting, 4 cup holders, stainless steel handrail, Life raft storage
- 1 Cockpit shower with mixer tap
- 2 Hinged PMMA companionway doors - Sliding hatch made of PMMA

SWIM PLATFORM / STERN DECK

- Fully opening transom, convertible into swim platform (2,65 m x 0,80 m / 8'8" x 2'7")
- Intermediate cockpit access step
- Electrically operated
- Natural solid wood decking on swim platform
- 1 Stainless steel, removable bathing ladder with dedicated stowage in the cockpit

INTERIOR

- Alpi Mahogany wood interior
- Parquet type laminated floors
- Fabric upholstery
- Padded lining in salon (Beige)
- Mattresses in the cabins, HR35kg/m³ foam

Standard version: 3 cabins 2 heads version

COMPANIONWAY

Headroom: 2,03 m / 6'8"

- Wooden salon companionway with molded wood hanging steps with non-slip surface
- 2 Stainless steel handrails covered with anthracite leather

SALON - STARBOARD

Headroom: 2,03 m / 6'8"

- U-shaped salon bench - Double density foam
- 1 Flexible and swivelling reading light
- Salon table - Varnished wooden top
- Storage under bench seats
- Mirror on forward bulkhead

- Bottle rack behind the bench against the forward bulkhead
- 2 Panoramic coachroof windows with curtains
- 2 Hull portholes
- 1 Opening portlight with curtains in the coachroof side window
- 2 Opening deck hatches with mosquito screen/blind

CHART TABLE - PORTSIDE

Headroom: 1,97 m / 6'6"

- Table with storage - molded wood fiddle - Laminated covering
- Seat with backrest, lounge function
- Electrical panel for access to electrical connections
- 2 Reading lights, flexible and swivelling
- 2 USB sockets
- Mirror on forward bulkhead
- Bookshelf against forward bulkhead
- 1 Hull porthole

GALLEY - PORTSIDE

Headroom: 1,94 m / 6'4"

- U-shaped galley
- Counter-top in Clay compact with Corian fiddles
- 1 rectangular stainless steel sink - 1 Mixer tap with hot/cold water under pressure
- 1 Gas stove 2 burners - Stainless steel oven on gimbal - Stainless steel protection handrail
- 1 100 L ice box, top opening (without refrigeration unit)
- 1 130 L refrigerator (12 V), front opening
- Fitted cupboards and closed cubbyholes
- Bin with access on the counter-top
- 1 Lower unit: 3 Drawers
- 1 Opening portlight with curtains in the coachroof side window
- 1 Hull porthole

PANTRY - PORTSIDE

Headroom: 1,98 m / 6'6"

- Access via galley
- Large storage area (1 Hanging locker, Cupboard units)
- Place for washing machine (optional) instead of high unit
- Place for wine cellar or negative cold conservator, 1 drawer (optional) instead of the low cupboard
- 1 Opening portlight with curtains in the coachroof side window

OWNER'S CABIN

Headroom: 1,95 m / 6'5"

- Central double bed (2,05 m x 1,60 m x 1,23 m / 6'9" x 5'3" x 4') Island bed type, mounted on gas struts
- 2 Hanging lockers, Open storage compartment along the hull, 6 Upper lockers, 1 Storage space under bed

(Drawer under the bed + Central stowage under bed)

- 1 Seat on both sides of the bed
- 2 Bedside tables with seat
- 2 Reading lights
- 2 USB sockets
- 1 Low shoe storage unit, 1 Mirror on bulkhead
- 2 Flush deck hatches with mosquito screen/blind
- 2 Hull portholes with sliding blind

2 PRIVATE HEADS:

Headroom: 1,85 m / 6'1"

to port:

- Manual marine toilet
- 1 80 L / 21 US Gal Rigid holding tank
- White polyester basin built into the Corian Clay counter-top, Mixer tap
- 1 Cabinet - Mirror
- Toilet accessories
- 1 Deck hatch with mosquito screen/blind

to starboard:

- Shower with wooden seat, white polyester shower base
- 2 Storage closets
- 1 Deck hatch with mosquito screen/blind

PORT AFT CABIN

Headroom: 1,97 m / 6'6"

- 1 Double bed (2,10 m x 1,60 m / 6'11" x 5'3")
- 2 Hanging lockers - 1 Cupboard - Closed cubbyholes
- 1 Bed access sideboard
- 2 Flexible and multi-directional reading lights at headboard
- 1 USB socket
- 1 Hull porthole with sliding blind
- 1 Cockpit opening window with curtain under cockpit seats
- 1 Fixed cockpit window with curtain on the coaming

STARBOARD AFT CABIN

Headroom: 1,97 m / 6'6"

- 1 Double bed (2,10 m x 1,60 m / 6'11" x 5'3")
- 1 Hanging locker - 1 Cupboard - Closed cubbyholes
- 1 Bed access sideboard
- 2 Flexible and multi-directional reading lights at headboard
- 1 USB socket
- Access door to aft head

- 1 Hull porthole with sliding blind
- 1 Cockpit opening window with curtain under cockpit seats
- 1 Fixed cockpit window with curtain on the coaming

OWNER'S HEAD - STARBOARD

Headroom: 1,83 m / 6'

- Access from the salon or the starboard aft cabin
- Separate shower - 1 Mixer tap - White polyester shower base
- Corian Clay counter-top with self-draining storage
- 1 Manual marine toilet
- 1 80 L / 21 US Gal Rigid holding tank
- Washbasin - 1 Mixer tap
- 1 Cabinet + Storage space under the basin
- 2 Mirrors
- Toilet accessories
- 1 Opening portlight with curtains in the coachroof side window

3 cabins 3 heads version

The pantry goes to the starboard side and is replaced by a head.

The aft cabins are symmetrical.

The port and starboard aft heads are symmetrical:

- Access from the salon or the aft cabin
- 1 Shower area accessible by swivelling the washbasin
- 1 Manual marine toilet
- 1 80 L / 21 US Gal Rigid holding tank
- 2 Mirrors
- Toilet accessories
- 1 Opening portlight with curtains in the coachroof side window

PANTRY - STARBOARD

- at base of companionway
- standard : 1 Hanging locker, Cupboard
- Place for washing machine (optional) instead of high unit
- Place for wine cellar or negative cold conservator, 1 drawer (optional) instead of the low cupboard

4 cabins 2 heads version

The starboard head of the standard version is replaced by a cabin with bunk beds.

- Headroom: 1,83 m / 6'
- 2 Bunk beds: Top bunk (1,95 m x 0,79 m - 0,54 m / 6'5" x 2'7" - 1'9") - Bottom bunk (1,93 m x 0,60 m - 0,43 m / 6'4" x 2' - 1'5")
- Storage
- 1 Opening porthole with curtain

4 cabins 4 heads version

The salon is unchanged. The cabins and heads are identical to version 3 cabins, 3 heads.

Forward: 2 cabins each with their private head.

5 cabins 3 heads version

The starboard head of the standard version is replaced by a cabin with bunk beds:

- Headroom: 1,83 m / 6'
- 2 Bunk beds: Top bunk (1,95 m x 0,79 m - 0,54 m / 6'5" x 2'7" - 1'9") - Bottom bunk (1,93 m x 0,60 m - 0,43 m / 6'4" x 2' - 1'5")
- Storage
- 1 Opening porthole with curtain

2 SYMMETRICAL FORWARD CABINS

Headroom: 1,93 m / 6'4"

- 1 Double bed (2 m x 1,36 m x 1,16 m / 6'7" x 4'6" x 3'10")
- 1 Hanging locker - 2 Closed high shelves, 1 Open shelving
- 1 Drawer under the bed
- 2 Swivelling reading lights
- 1 Deck hatch with mosquito screen/blind
- 1 Hull porthole with sliding blind
- 1 USB socket
- Access door to the head

ENGINE

- Engine Yanmar Diesel:
 - 80 HP/80 HP, Sail Drive, Common Rail (standard)
 - 80 HP/80 HP, Common Rail, Dock & Go (Option)
 - 110 HP/110 HP, Propeller shaft, Common Rail (Option)
- Engine throttle and control panel on starboard
- Engine compartment: Soundproofing foam - Ventilation: 3 air intakes and 1 forced air outlets
- 1 Alternator 12 V / 125 Amp
- 1 Rotomolded diesel tank 200 L / 53 US Gal (under starboard aft berth)
 - Electronic gauge - Low level alarm - 1 Deck filler
- Filters: Sea water - Diesel - Water separator
- Fixed three blade propeller
- 1 Engine access through companionway (opening with 2 gas pistons) - 2 Engine access through aft cabins

ELECTRICITY

- 12 V Circuit
- 2 Service batteries (140 Amp) - 1 Engine battery (120 Amp)
- 1 Load balancer
- 12 V Electrical panel (Fuses - Voltmeter - Water gauge - Fuel gauge - Battery warning - Fuel warning - Water warning)
- 6 115V Sockets
- 6 USB sockets
- 1 Shore power socket (115V)
- LED lighting: Overhead lights - Reading lights - Reading light, flexible and multi-directional
- LED navigation lights: 1 Masthead light - 1 Steaming light - 1 Mooring light on masthead
- Wire runs for optional cables

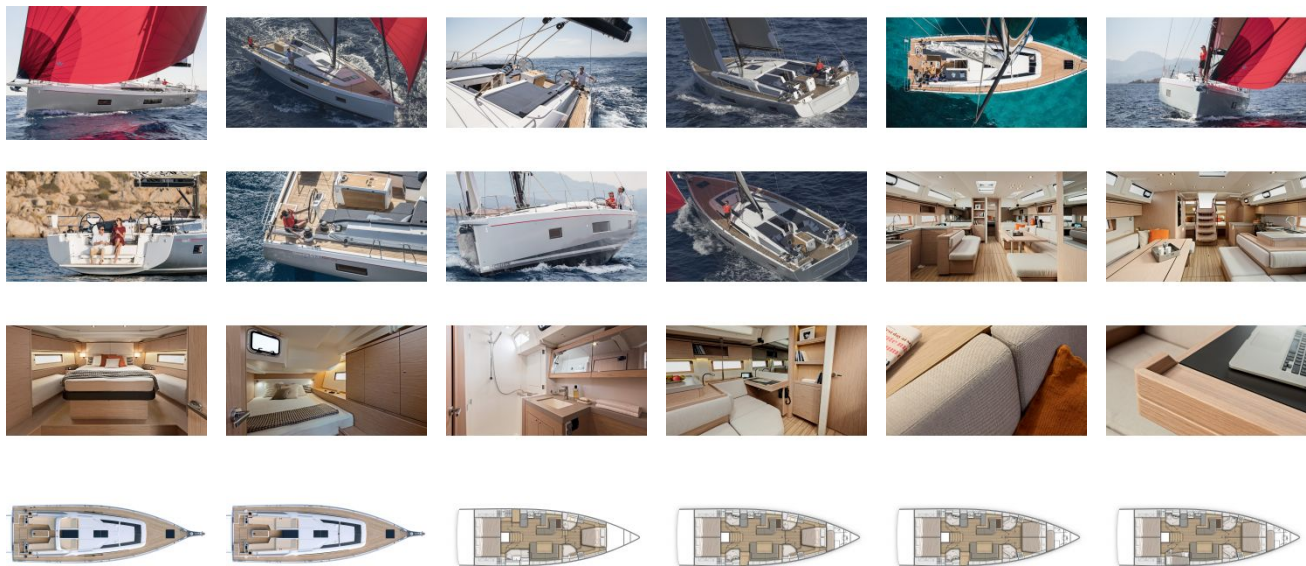
PLUMBING

- 1 Rotomolded freshwater tank 400 L / 106 US Gal, under berth in forward cabin - 1 Deck filler
- Waterpressure system - Expansion tank - Inline filter
- 40 L / 11 US Gal Electric water heater (engine use)
- 1 Rigid 80 L / 21 US Gal black water holding tank for each WC
- Electrical shower drain pumps
- 1 Electric bilge pump
- 1 Manual bilge pump
- 1 Electric pump for the ice box drain

GAS

- 1 Box for 2 gas bottles in the cockpit (diameter: 0,28 m/ 11" x Height: 0,44 m/ 1'5")
- Regulator and solenoid

GALLERY



Annapolis Yacht Sales
7350 Edgewood Rd.
Annapolis, MD 21403
Phone: 410.267.8181