



Viage Group
7981 N Tamiami Trail
Sarasota, FL, US
Phone: 941.444.5375

Beneteau Barracuda 7

Boat Type: Sport Fishing



OVERVIEW

With an attractive wheelhouse, the Barracuda 7 sport fishing boat combines comfort and speed and will take you anywhere on water safely. With a top speed of 35 knots, this seaworthy boat is easy to use and drive to wherever the shoals of fish are located.

SPECIFICATIONS

Basic Information

Manufacturer:	Beneteau	Boat Type:	Sport Fishing
Model:	Barracuda 7	Hull Material:	
Year:	2018	Hull Type:	
Category:	Power		

Dimensions & Weight

Length:	24.00 ft	Draft - max:	-
LOA:	24 ft 3 in - 7.39 meter	Bridge Clearance:	-
Beam:	8 ft 8 in - 2.64 meter	Dry Weight:	-
Deadrise Aft:	-		

Tank Capacities

Fuel Tank:	53 gallons - 1 tank(s)	Holding Tank:	-
Fresh Water Tank:	26 gallons - 1 tank(s)		

Accommodations

Total Cabins:	-	Crew Cabins:	-
Total Berths:	-	Crew Berths:	-
Total Sleeps:	-	Crew Sleeps:	-
Total Heads:	-	Crew Heads:	-
Captains Cabin:	No		

FEATURES

CONSTRUCTION

HULL

Composition:

- Polyester sandwich
- White hull
- Hull counter-molding completely laminated in polyester
- Planning hull with extended V bow

DECK

Composition:

- Polyester sandwich
- Non-skid surfaces (diamond-tip)
- White gel coat
- Part deck counter-molding at the bow laminated in polyester

DECK EQUIPMENT

- Navigation lights = 1 all-round light on collapsible samson post
- Bi-colour navigation light

MOORING - ANCHORING GEAR

- Self-bailing mooring locker with hatch cover
- Lines locker
- Secondary aft anchor well (Starboard)
- Eye bolt to secure mooring
- 2 Forward cleats
- 2 Cleats to aft

SAFETY ON DECK

- Open pulpit
- 2 Stainless steel handrails on wheelhouse uprights
- 2 Stainless steel handrails on wheelhouse hood
- Handrail integrated with the deck around the cockpit

COCKPIT

Cockpit dimensions = 1,83 m x 2,12 m / 6'0" x 6'11"

- Self-bailing cockpit
- 3 Large lockable chest in cockpit bottom - 2 Hood cover
- Large tilting cockpit benchseat (2,12 m x 0,40 m / 6'11" x 1'4") with gas strut to raise engines, 2 removable sides
- Gunwales in plain solid wood

- 2 Rod holders
- 2 Stainless steel fairleads
- Fuel filler point on port bathing platform
- 1 Stainless steel swimming ladder, in position
- Lighting from 1 ceiling light
- Wide safe sidedecks (29-33 cm / 0'11" x 1'1") - Freeboard: 75 cm / 2'6"
- Benchseat in front of wheelhouse

INTERIOR

- PVC Diamante Storm upholstery (Pilot seat / Co-pilot seat)
- Woodwork Alpi Mahogany
- Parquet type laminated floors

WHEELHOUSE

Headroom: 2 m / 6'7"

- Wheelhouse with one-piece translucent glass windscreen
- Side windows in grey-tinted PMMA
- Large grey-tinted translucent PMMA fixed window aft of wheelhouse - Integrated sliding window
- 2 Sliding side access doors for the wheelhouse (port and starboard)
- Black anodised aluminium frame and lock
- Removable co-pilot bench seat (0,70 m x 0,38 m / 2'4" x 1'3") with built-in galley (Location provided for optional gas stove, shelving and sink)
- Location provided for 42 L refrigerator under co-pilot bench seat
- Stowage locker under the galley
- Storage under the floor
- 1 Electric windscreen wipers

- Lighting from 1 ceiling light

STEERING STATION (TO STARBOARD)

- Hydraulic steering
- Instrument panel with space for 10" electronics
- Steering compass
- 12 function 12 V electrical panel (depending on options)
- Fuel gauge indicator
- Engine instrumentation: Rev counter, Control console, Contact key delivered with pre rigging option
- 12 V Power outlet
- Steering wheel
- Padded helmsman's seat with Diamante Storm PVC upholstery and adjustable Bolster (fore aft)
- Pilot footrests

FORWARD CABIN

Headroom: 1,50 m / 4'11"

- Additional double berth (max: 2,15 m / 7'1" (Beam) x 2 m / 6'7" (Length))
- Cubby hole lockers
- Storage under berth
- Lighting from 1 ceiling light
- Storage locker to port

HEAD (STARBOARD)

Headroom: 1,52 m / 4'12"

- Location for sea toilet

- Rigid sewage tank (Capacity = 80 L / 21 US Gal) (optional)
- Lighting from 1 ceiling light

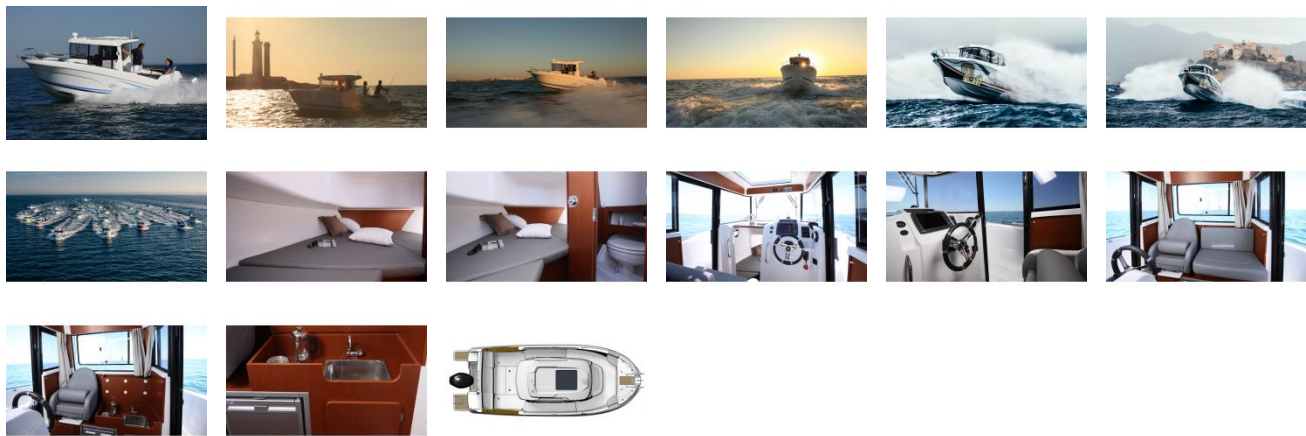
ELECTRICITY

- 12 function 12 V electrical panel (depending on options)
- 12 V Power outlet
- 2 Bilge pumps: 1 manual, 1 Electric pump
- Engine battery supplied with pre-rigging
- Access to battery compartment via starboard cockpit locker
- Battery switch

PLUMBING

- Flexible water tank (Capacity = 100 L / 26 US Gal) (optional)
- Water pump for pressure building (optional)

GALLERY



Viage Group
7981 N Tamiami Trail
Sarasota, FL, US
Phone: 941.444.5375