



**Yachting Solutions**  
229 Commercial Street  
Rockport, ME, US  
Phone: (207) 236-8100

# Beneteau Gran Turismo 40

Boat Type: Sport Cruiser



## OVERVIEW

"Designed by the talented hands of Nuvolari and Lenard, the Gran Turismo 40 recreates the sport cruiser concept. A perfectly proportioned interior and superior performance make her not only eye catching but a pleasure to drive."

The slender line of the Gran Turismo 40, underlined by her hardtop and exquisite side glazing, emphasizes her pronounced sporty character. Built with a central driving console and the latest generation of Air Step® hull, she is not only superior at the wheel but safe, even traveling at speeds of up to 38 knots. The generous and organized space in the cockpit can seat up to 11 people and the outdoor galley is placed aft.

The layout of the lower deck gives you a feeling of space unrivalled on a boat this size. Facing the spacious salon, a proper fully-fitted galley complements the deck galley. The Gran Turismo is constructed with two cabins, a head and separate shower. Matte walnut woodwork and lavishly upholstered furniture is the signature mark of her elegance.

## SPECIFICATIONS

### Basic Information

Manufacturer:	Beneteau	Boat Type:	Sport Cruiser
Model:	Gran Turismo 40	Hull Material:	Fiberglass
Year:	2020	Hull Type:	
Category:	Power		

### Dimensions & Weight

Length:	40.00 ft	Draft - max:	3 ft 9 in - 1.14 meter
LOA:	41 ft 7 in - 12.67 meter	Bridge Clearance:	13 ft 7 in - 4.14 meter
Beam:	12 ft 8 in - 3.86 meter	Dry Weight:	17489 ft
Deadrise Aft:	-		

### Tank Capacities

Fuel Tank:	172 gallons - 2 tank(s)	Holding Tank:	21 gallons - 1 tank(s)
Fresh Water Tank:	53 gallons - 1 tank(s)		

### Accommodations

Total Cabins:	2	Crew Cabins:	-
Total Berths:	-	Crew Berths:	-
Total Sleeps:	-	Crew Sleeps:	-
Total Heads:	1	Crew Heads:	-
Captains Cabin:	No		

## FEATURES

### STANDARD EQUIPMENT

#### CONSTRUCTION

##### HULL

- Technology Air Step®
  - White hull
- Composition:
- Sandwich (polyester resin - fiberglass - balsa core), 5 Portholes
  - Hull counter molding laminated in monolithic (polyester resin - fiberglass)
  - 8 Opening portholes

##### DECK

- Composition:
- Sandwich (polyester resin - fiberglass - balsa core)
  - Deck counter molding laminated in monolithic (polyester resin - fiberglass)

#### DECK EQUIPMENT

- Radar support

- Courtesy light in cockpit
- Navigation lights

### **MOORING - ANCHORING GEAR**

- Swivel bow fitting with anchor securing system
- 1000 W Electric windlass (with remote control)
- 2 Forward cleats, 2 central and 2 aft in stainless steel

### **SAFETY ON DECK**

- Half open pulpit in stainless steel with guardrail and handrail
- 2 Stainless steel handrails on access to sidedeck steps

### **COCKPIT**

- Self-bailing cockpit
- Access through a gate with safety catch
- 8 People salon convertible to sun deck
- Natural solid wood cockpit table (0,95 m x 0,6 - 1,2 m / 3'1" x 2'3" - 3'11") convertible into sunpad (1,90 m x 1,65 m / 6'3" x 5'5")
- Lounge chair (to starboard)
- Double bench (to port)
- Storage locker (under the seats)
- Double access cover to engine well
- Space for cased life-raft
- Cockpit shower with mixer tap
- Swim deck (3,2 m x 1,24 m / 10'6" x 4'1") + Swimming ladder (optional)
- Hand rail on rear table
- Assorted exterior PVC upholstery:
  - cross stitched PVC Ivory & Mocca (standard)
  - PVC Beige & Cream with diamond pattern (optional)
- TV Pre-wiring (in the cockpit)
- Locations for 13 US Gal coolers in cockpit

### **STEERING STATION**

- Central pilot station in Crème color
- Twin pilot bench seat with Bolster function
- 3rd Copilot seat
- Pilot and co-pilot upholstery matching the cockpit salon upholstery:
  - PVC Ivory & Mocca (standard)
  - PVC Beige & Cream (optional)
- 2 Handrails
- Gloss black dashboard with padded Cognac PVC cap
- Volvo screen 4"
- Space for electronics 12"
- 12 V Power outlet
- Polyester hard-top with built-in electric sunroof
- Glass windscreen with built-in electric wiper
- Anti-glare surface in grained polyester Mocca color under windscreen
- 3 Cup holders

## **INTERIOR**

- Woodwork Alpi Mat Walnut
- Brown oak laminated floors
- Direct and indirect LED lighting

## **SALON**

Headroom: 1,92 m / 6'4"

- Access door
- Sofa seating for 4, upholstery Courchevel Shell fabric
- Table in mat walnut wood, Stainless steel legs
- TV Pre-wiring
- 4 Storage cupboards (Capacity: 186 L / 6,5 cu/ft)
- 2 Storage lockers (under the seats)
- Skylights
- 2 Opening hull portholes

## **GALLEY**

Headroom: 1,92 m / 6'4"

- Stainless steel sink with mixer tap
- 2 hob gas plate
- White corian type worktop
- Cutlery storage
- Fridge (80 L / 2.8 cu/ft)
- 3 Storage drawer, Garbage bin
- Cream-lacquered furniture
- 1 Storage cupboard
- 1 Opening porthole

## **HEAD**

Headroom: 1,95 m / 6'5"

- Sink with mixer tap
- Mirror
- 2 Storage cupboards
- 1 Opening porthole
- Shower separated by translucent door
- Marine toilet
- Rigid holding tank 80L / 21 US Gal
- Teak slatted floor
- 1 110 V Power outlet

## **OWNER'S CABIN (FORWARD)**

Headroom: 1,90 m / 6'3"

- Double berth (1,40 x 2,00 m / 4'7" x 6'7")
- Marine mattress
- Padded bed head board
- 2 LED reading lights
- 2 Cubby hole lockers
- 2 Hanging lockers
- 2 110 V power outlet

- 2 Panoramic windows with opening ports and shutters
- Opening deck hatch with mosquito blind
- 3 Storage drawer (Under the bed)
- Indirect light (Under the bed)
- TV Pre-wiring

## **GUEST CABIN**

Headroom: 1,92 m / 6'4"

- 2 Single berths (0,70 x 1,95 m / 2'4" x 6'5") or 1 Double berth (1,40 x 1,95 m / 4'7" x 6'5")
- Marine mattress
- 2 Panoramic windows with opening ports and shutters
- 1 Opening hatch fitted with blind
- 2 Hanging lockers
- 2 Storage lockers (Capacity: 7,37 cu/ft ; 8 cu/ft)
- 1 Bed side table with drawer
- 2 LED reading lights

## **ENGINE**

- Propulsion Stern Drive
- Choice of engines:
  - Volvo D4 300 Diesel EVC-E (2 x 221 kW - 2 x 300 HP) + Joystick
  - Volvo D6 370 Diesel EVC-E (2 x 272 kW - 2 x 370 HP) + Joystick
- throttle & controls:
  - Neutral (Activation of neutral)
  - Station (Activation of the station)
  - Trim (Trim adjustment)
- Docking Joystick (depending on engine version)
- Fuel filter with decanter
- Sea water filter
- Air intakes on the deck for engine compartment cooling
- Engine room foam soundproofed
- Fire extinguishing system activated from the steering station
- Stainless steel fuel fill
- 2 x 325 L / 86 US Gal Rotomolded fuel tanks
- Electric trim tabs

Steering system:

- Hydraulic steering
- 2 Outdrives with counter rotating propellers
- Electrical engine controls

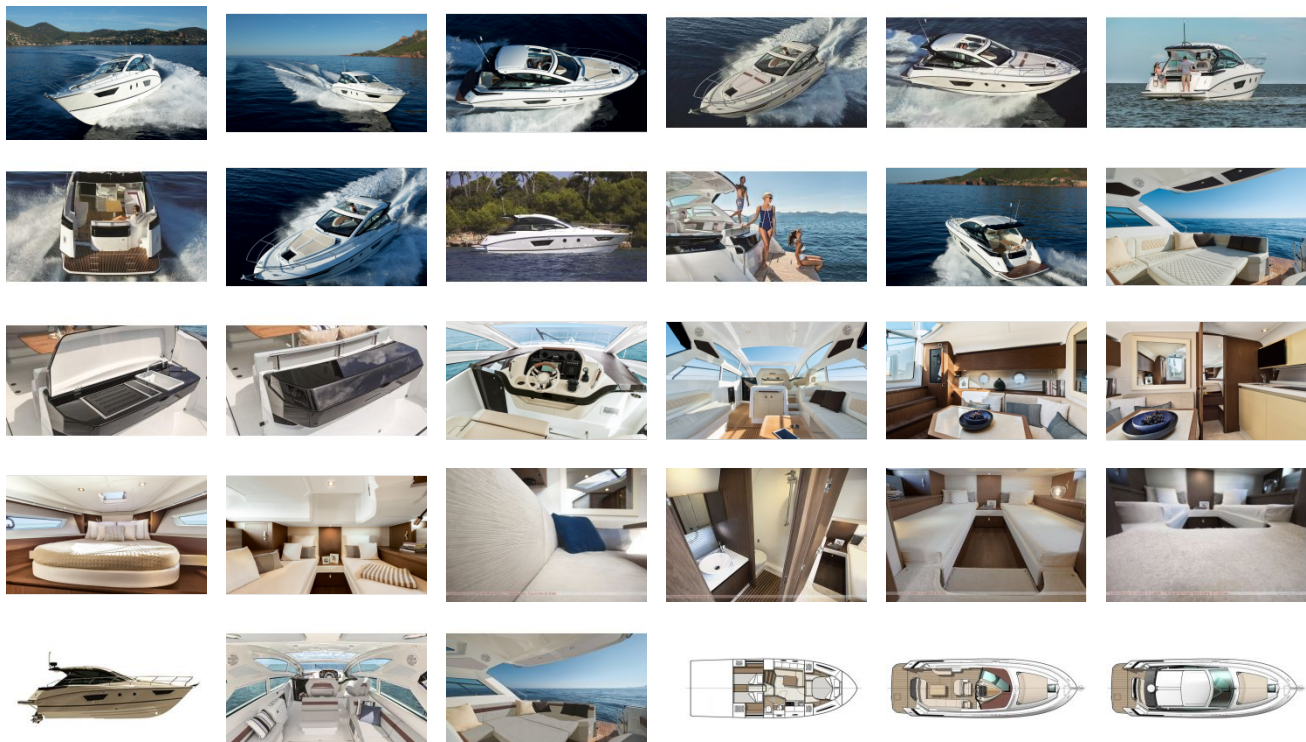
## **ELECTRICITY**

- 2 engine batteries (12 V - 140 Ah) + 1 Service battery (12 V - 115 Ah) + Electrical gauge
- 2 Extinguishers
- Load balancer
- Battery charger (12 V - 25 Ah)
- Inside sockets (110 V - 32A)
- 110 V Shore power supply
- Spotlights and LED reading lights

## **PLUMBING**

- 1 Rotomolded water tank, 200 L / 53 US Gal + Electrical gauge
- Stainless steel water fill
- Water pump for pressurizing hot/cold water system
- 40 L / 11 US Gal water heater working off engine heat exchanger
- 2 Bilge pumps:
  - 1 Electric bilge pump
  - 1 Manual bilge pump

GALLERY



**Yachting Solutions**  
229 Commercial Street  
Rockport, ME, US  
Phone: (207) 236-8100