



**Viage Group**  
7981 N Tamiami Trail  
Sarasota, FL, US  
Phone: 941.444.5375

# Beneteau Gran Turismo 46

Boat Type: Sport Cruiser



## OVERVIEW

Equipped with the leading Air Step® technology, the Gran Turismo 46 is the latest generation of sport cruiser. Boldly designed, she boasts a stylish and clever layout with ample opportunity to personalize.

With her elegant sporty line, the Gran Turismo 46 retains a completely open hardtop, electrically operated side glazing and a wide glass door that protects the cockpit. A perfect combination between protection and clear space, she offers an aft galley.

For the first time, the latest planning hull generation offers a choice between a Volvo IPS 600 or a Z Drive engine, allowing up to 2 x 400 HP. Both safe and easily maneuvered, this model promises satisfaction at the wheel.

With the owner's suite offering a full beam view of the water on both sides and a guest cabin with a head and separate shower, the Gran Turismo 46, in a two or three cabin layout, offers superior accommodation for her size. Her interior is well-ventilated and provides a lot of natural light. Gorgeous woodwork enhanced by lavish materials such as titanium, leather and lacquer finishes create a comfortable atmosphere.

SPECIFICATIONS

Basic Information

Manufacturer:	Beneteau	Boat Type:	Sport Cruiser
Model:	Gran Turismo 46	Hull Material:	Fiberglass
Year:	2020	Hull Type:	
Category:	Power		

Dimensions & Weight

Length:	46.00 ft	Draft - max:	-
LOA:	48 ft 6 in - 14.78 meter	Bridge Clearance:	-
Beam:	13 ft 9 in - 4.19 meter	Dry Weight:	22180 ft
Deadrise Aft:	-		

Tank Capacities

Fuel Tank:	119 gallons - 2 tank(s)	Holding Tank:	-
Fresh Water Tank:	53 gallons - 2 tank(s)		

Accommodations

Total Cabins:	3	Crew Cabins:	-
Total Berths:	-	Crew Berths:	-
Total Sleeps:	-	Crew Sleeps:	-
Total Heads:	2	Crew Heads:	-
Captains Cabin:	No		

FEATURES

STANDARD EQUIPMENT

CONSTRUCTION

HULL

- Air Step system ®
- White hull
- Composition:
  - Sandwich (polyester resin - fiberglass - balsa core)
  - Hull counter molding laminated in monolithic (polyester resin - fiberglass)
- 8 Opening portholes

DECK

- Composition:

- Sandwich (polyester resin - fiberglass - balsa core)

- Deck counter molding laminated in monolithic (polyester resin - fiberglass)

## DECK EQUIPMENT

- Courtesy light in cockpit
- Navigation lights

## MOORING - ANCHORING GEAR

- Bow fitting with anchor securing system
- 1 000 W Electric windlass (with remote control)
- 2 Forward cleats, 2 central and 4 aft in stainless steel

## SAFETY ON DECK

- Half open pulpit in stainless steel with guardrail and handrail
- 2 Stainless steel handrails on access to sidedeck steps COCKPIT
- Self-bailing cockpit
- Access by 2 gates with safety catch
- Electric cockpit windows
- 8 People salon
- Natural solid wood cockpit table
- Lounge chair (to starboard)
- Swivelling port and starboard double benches
- 4 Storage lockers (under the seats)
- Cockpit gallery with sink, foldaway tap, Storage
- Engine well access cover
- Space for cased life-raft
- Cockpit shower with mixer tap
- Swim platform (3,62 x 1,33 m / 11'11" x 4'4") + Swimming ladder
- Hand rail on rear table
- Assorted exterior upholstery:

- PVC Marlin Auster & Cognac (standard)

- PVC Hitch Alloy & Marlin Auster (optional)

- Bose speakers
- TV pre-assembly

## STEERING STATION

- Central pilot station in polyester color Mocca
- Pilot seat with function Bolster
- Double bench (Co-pilot)
- Foldable footrest
- Pilot and co-pilot upholstery matching the cockpit salon upholstery
- 2 Handrails
- Gloss black dashboard with padded Cognac PVC cap

- Volvo 4" screen
- Space for electronics (12" or 16")
- Polyester hard-top with built-in electric sunroof
- Glass windscreen with 2 fitted electric wipers
- Anti-glare surface in grained polyester Mocca color under windscreen
- 4 Cup holders

## INTERIOR

- Woodwork Alpi matt walnut
- Brown oak laminated floors
- Direct and indirect LED lighting

## GALLEY

Headroom: 1,95 m / 6'5"

- Double stainless steel sink, with mixer
- Ceramic hob, 2 burners (Kenyon)
- White corian type countertop
- 218 L Fridge Freezer
- Covered stowage drawer
- Garbage bin
- Cream & Titanium lacquered furniture
- 4 Storage cupboards
- 1 Opening porthole
- 2 110 V Power outlets
- Leather covered handrails
- Venetian blinds

## SALON (2 cabin layout only)

Headroom: 1,99 m / 6'6"

- Sofa seating for 4, upholstery Courchevel Pearl fabric
- Salon convertible into double berth
- Table in matt walnut wood - Stainless steel foot
- Position intended for television (20" - 24")
- 4 Storage cupboards
- 2 Storage lockers (under the seats)
- 2 Skylights
- 1 Opening hull porthole
- 1 110 V Power outlet
- Bose speakers
- Venetian blinds
- Direct and indirect LED
- TV pre-assembly

## GUEST CABIN (3 cabin layout only)

Headroom: 1,99 m / 6'6"

- 2 Bunk beds (0,52 x 1,97 m / 1'8" x 6'6")
- 2 Reading lights
- 1 Bed side table with drawer
- 1 Hanging locker
- 1 Opening porthole
- 1 110 V Power outlet
- Venetian blinds
- Direct and indirect LED

#### VIP CABIN (FORWARD)

Headroom: 1,94 m / 6'4"

- 1 double bed (1,57 x 1,92 m / 5'2" x 6'4") or 2 single beds (sliding system)
- Marine mattress
- Slatted bed base
- Padded bed headboard
- 2 Reading lights
- 2 Shelving unit
- 2 Hanging lockers
- 1 Cupboard with shelves
- 1 110 V Power outlet
- 2 Panoramic windows with opening ports and blinds
- Opening deck hatch with mosquito screen/blind
- Indirect light
- TV pre-assembly + Fusion audio system

#### VIP HEAD COMPARTMENT (FORWARD)

Headroom: 1,95 m / 6'5"

- Sink with mixer tap
- Mirror
- 2 Storage cupboards
- 1 Opening porthole
- Shower separated by translucent door
- Electric toilet Quiet Flush
- Teak slatted floor
- 2 110 V Power outlets

#### OWNER'S CABIN (AFT)

Headroom: 1,93 m / 6'4"

- Double berth (1,50 x 1,99 m / 4'11" x 6'6")
- Marine mattress
- Slatted bed base
- Padded bed headboard
- 2 Reading lights
- 3 Storage lockers
- 1 Hanging locker

- 2 110 V Power outlets
- Bose speakers
- 2 Panoramic windows with opening ports and blinds
- 1 Light well with shutter
- Lounge chair (with view of the sea)
- TV pre-assembly + Fusion audio system

#### OWNER'S HEAD COMPARTMENT (AFT)

Headroom: 1,98 m / 6'6"

- Sink with mixer tap
- Mirror
- 3 Storage cupboards
- 1 Opening porthole
- Shower separated by translucent door
- Electric toilet Quiet Flush
- Teak slatted floor
- 1 110 V Power outlet

#### ENGINE

- Propulsion Stern drive or IPS
- Choice between:
  - Volvo D6 370 Diesel EVC-E engine (2 x 272 kW - 2 x 370 HP) + Joystick
  - Volvo D6 400 Diesel EVC-E engine (2 x 294 kW - 2 x 400 HP) + Joystick
  - Volvo IPS 600 Diesel EVC-E engine (2 x 320 kW - 2 x 435 HP) + Joystick
- Throttle & controls
  - Trim (Trim adjustment - only on Stern drive versions)
- Docking Joystick
- Fuel filter with decanter
- Sea water filter
- Air intakes on the deck for engine compartment cooling
- Engine room foam soundproofed
- Fire extinguishing system activated from the steering station
- Stainless steel fuel fill
- 2 x 450 L / 119 US Gal Rotomolded fuel tanks
- Bow thruster

Steering system:

- Electric steering
- 2 Bases or Pods with counter-rotating propellers
- Electrical engine controls
- Volvo IPS Software:

- Trip computer
- Cruise control
- Single lever
- Low speed
- Volvo Z-Drive Software:
  - Trip computer
  - Cruise control
  - Tow mode
  - Single lever
  - Power trim assistant

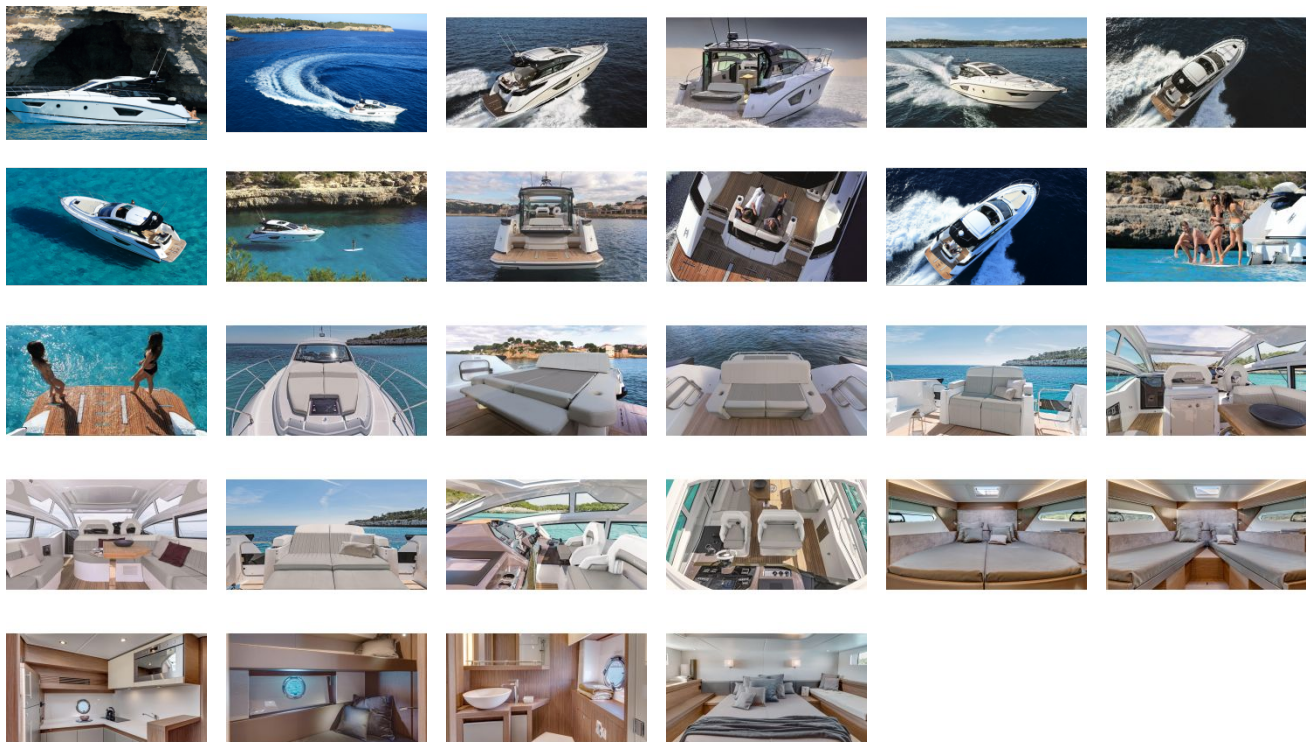
## **ELECTRICITY**

- 2 engine batteries (12 V - 115 Amp) + 3 AGM service batteries (12 V - 115 Amp) + Electrical gauge
- 1 Extinguisher
- Load balancer
- Battery charger (12 V - 40 Amp)
- Interior power outlet 110 V
- Shore power socket (110 V - 32A)
- Spotlights and LED reading lights
- 7,5 kVA Generator (110 V / 60 Hz)
- Inverter (2 000 W)

## **PLUMBING**

- Shore freshwater supply
- 2 Rotomolded water tanks, capacity of 200 L / 53 US Gal each + Electrical gauge
- Stainless steel water fill
- Water pump for pressurizing hot/cold water system
- 40 L / 11 US Gal Water heater working off engine exchanger and 110 V
- 2 Bilge pumps:
  - 2 Electric bilge pumps (50 L/minute)
  - 1 Manual bilge pump (30 L/minute)
- 120 L / 32 US Gal Rigid holding tank

GALLERY



**Viage Group**  
7981 N Tamiami Trail  
Sarasota, FL, US  
Phone: 941.444.5375