



Yachting Solutions
229 Commercial Street
Rockport, ME, US
Phone: (207) 236-8100

Beneteau Gran Turismo 49

Boat Type: Sport Cruiser



OVERVIEW

The Gran Turismo 49 combines the pleasures of speed cruising with the space for family and friends to enjoy incredible luxury. She promises memorable moments underway and at anchor.

Taut lines and a sporty look, the Gran Turismo 49 boasts a spirited temperament. On board, the living spaces have been designed to enjoy moments of relaxation and interaction. The large submersible swim platform offers a space to store a jet ski, as well as a large dinghy locker, in which these leisure craft can be easily accessed.

A glass door closes off the cockpit to create a second lounge area inside with a panoramic sea view. The opening roof provides perfect ventilation. The galley, located below the lounge, is completely open. It is bathed in light from the windshield. The atmosphere inside is a marriage of walnut wood in contrast to glossy lacquered furniture and padding in shades of taupe, bronze and cream. The opportunities to personalize the boat are many: lacquer colors, worktops, floor coverings, upholstery etc.

Space, accommodation, practical features,
it is a real pleasure to live on board the Gran Turismo 49.

SPECIFICATIONS

Basic Information

Manufacturer:	Beneteau	Boat Type:	Sport Cruiser
Model:	Gran Turismo 49	Hull Material:	Fiberglass
Year:	2018	Hull Type:	
Category:	Power		

Dimensions & Weight

Length:	49.00 ft	Draft - max:	3 ft 7 in - 1.09 meter
LOA:	51 ft 7 in - 15.72 meter	Bridge Clearance:	15 ft 5 in - 4.7 meter
Beam:	14 ft - 4.27 meter	Dry Weight:	33038 ft
Deadrise Aft:	-		

Tank Capacities

Fuel Tank:	344 gallons - 2 tank(s)	Holding Tank:	40 gallons - 1 tank(s)
Fresh Water Tank:	110 gallons - 2 tank(s)		

Accommodations

Total Cabins:	2	Crew Cabins:	-
Total Berths:	-	Crew Berths:	-
Total Sleeps:	-	Crew Sleeps:	-
Total Heads:	2	Crew Heads:	-
Captains Cabin:	No		

FEATURES

STANDARD EQUIPMENT

CONSTRUCTION

HULL

White hull

Composition:

- Sandwich (polyester resin - fiberglass - balsa core)
- Hull counter molding laminated in monolithic (polyester resin - fiberglass)
- 8 Opening portholes (fitted with curtains)

DECK

Composition:

- Sandwich (polyester resin - fiberglass - balsa core)
- Deck counter molding laminated in monolithic (polyester resin - fiberglass)

DECK EQUIPMENT

- Polyester radar arch

- Navigation lights

MOORING - ANCHORING GEAR

- Swivel bow fitting with anchor securing system
- 2 000 W Electric windlass (with remote control)
- 2 Forward cleats, 2 central and 4 aft in stainless steel

SAFETY ON DECK

- Half open pulpit in stainless steel with guardrail and handrail
- 2 Stainless steel handrails on access to sidedeck steps
- 2 Stainless steel handrails on forward sun deck
- 1 Grab rail behind the cockpit benchseat

DECK

- Forward sun deck: 2,30 x 2,00 m / 7'7" x 6'7"
- Forward peak decked in plain solid wood
- Lounging chair type forward sunbed with adjustable back rest

COCKPIT

- Natural solid wood cockpit floor
- Cockpit unit with sink, grill stand and space for refrigerator (options), storage
- 6 People salon (convertible into sunbed with optional table)
- Space for 2 life rafts for 10 people
- Cockpit shower hose with hot water mixer tap / Cold water
- Cup holders + Glove box
- Gate access (portside)
- Solid wood swim platform
- Stainless steel, removable swim ladder, storage in the garage housing the tender (access beneath the benchseat)
- Garage for inflatable 2,85 m (9'4") tender and outboard engine, in position
- Extra joystick in cockpit
- Bose Loudspeakers
- Launching ramp + Winch
- Cockpit grill cooker Kenyon + Flame guard
- 42 L Cockpit refrigerator
- Electrically-opened, using 2 electric struts
- Starboard access to engine room
- Exterior upholstery PVC Diamante Moonlight
- Direct lighting LED

INTERIOR

- Choice between:
 - Brown oak laminated floors + Alpi walnut woodwork (standard)
 - Parquet type laminated floors + Woodwork Alpi Mahogany
- Accent Grey Taupe Cushions

WHEELHOUSE

Headroom: 1,97 m / 6'6"

- 3-panel sliding window door with curtains (mirror tinted)

- Lights (spotlights and indirect lights)

STEERING STATION

- Transparent windscreen, black-lacquered mullions
- Mirror tinted side windows with blinds
- 2 Windscreen wipers with washers
- Defogging system
- Pilot and copilot bench with Bolster function, Anthracite grey PVC upholstery
- Instrument panel painted with silk-finish chestnut paint
- Compass, Revolution counter, Rudder angle indicator
- Engine function indicators on 7" VOLVO digital display
- Interior power outlet 12 V for mobile phone
- Glove box
- Bow thruster control

SALON

Wheelhouse salon:

- Wooden 6-seater benchseat and table matching the woodwork, Pedestal electric table
- Bar with panoramic view
- Storage space in bar unit and under bench seats
- 36" LED TV precabing
- Electrical sun roof
- Ivory carpet (standard) or Moka under wheelhouse table
- 110 V Power outlet
- Fusion 700 Audio and DVD system (Bluetooth connection + Remote control) + Bose speakers in the wheelhouse salon

LOWER SALON

Headroom: 1,98 m / 6'6"

- Bench seating - 4 people
- Storage cupboards
- Opening hull porthole in salon
- Ivory carpet (standard) or Moka
- 110 V Power outlet

OR: 3RD CABIN

- 2 Single berths
- Marine mattress
- Hanging locker + Storage cupboards
- Ivory carpet (standard) or Moka

GALLEY

Headroom: 1,98 m / 6'6"

Kitchen-type layout:

- Optimum storage space
- Stainless steel sink with mixer tap
- Ceramic hob, 2 burners
- Corian Taupe countertop
- 24 L Micro-wave oven
- 270 L Fridge Freezer

- Cutlery storage
- Bin with fitted twin bucket
- Opening hull porthole
- Brown oak laminated floors
- White-lacquered (standard) or optional taupe or cream-lacquered units
- 2 110 V Power outlets

VIP CABIN (FORWARD)

Headroom: 1,95 m / 6'5"

- 1 Double berth (2,00 x 1,60 m / 6'7" x 5'3")
- Marine mattress
- 2 Panoramic opening porthole-fitted portlights with blinds
- Closets and cubbyholes
- Ivory carpet (standard) or Moka
- Strut-mounted bed
- 2 Drawers beneath bunk for storage
- 110 V Power outlet
- Spotlight and reading lighting
- Mirror
- Precabing TV LED 22" + Cabin DVD/MP3 player VIP

VIP HEAD COMPARTMENT

Headroom: 1,98 m / 6'6"

- Electric toilet Vacuflush + shared rigid holding tank 150 L / 40 US Gal
- Shower separated with 2 swing doors
- Sink with mixer tap
- Mirror and storage space
- Automatic shower water drainage
- 110 V Power outlet

OWNER CABIN (AFT)

Headroom: 2,15 m - 1,60 m / 7'1" - 5'3"

- Full beam cabin
- Double berth (2,00 m x 1,70 m / 6'7" x 5'7")
- Strut-mounted bed
- Marine mattress
- Padded bed head board, Majilite
- Wardrobes, Hanging lockers, Storage
- Spotlight and reading lighting
- 110 V Power outlet
- 2 Panoramic opening porthole-fitted portlights with blinds
- Space for LED 32" screen television (optional)
- Meridian couch to port or storage cupboard (optional)
- Mirror
- Ivory carpet (standard) or Moka
- Precabing TV LED 32" + DVD Player / MP3 in owner's cabin (Antenna not included)

OWNER HEAD COMPARTMENT

Headroom: 2,30 m / 7'7"

- Electric toilet Vacuflush + shared rigid holding tank (150 L / 40 US Gal)

- Shower separated with 3 swing doors
- Sink with mixer tap
- Mirror and storage space
- Automatic shower water drainage
- 110 V Power outlet

ENGINE

Propulsion IPS:

- Volvo 2 x D6 IPS 600 - 2 x 435 HP/HP Diesel (2 x 320 kW) EVC-E
- Fuel filter with decanter
- Sea water filter
- Air intakes on the deck for engine compartment cooling
- Hot air extraction forced by electric ventilators
- Engine room foam soundproofed
- Fire extinguishing system activated from the steering station
- Stainless steel fuel fill
- 2 x 650 L / 2x172 US Gal Rotomolded fuel tanks

Steering system:

- Hydraulic steering
- 2 Outdrives with counter rotating propellers

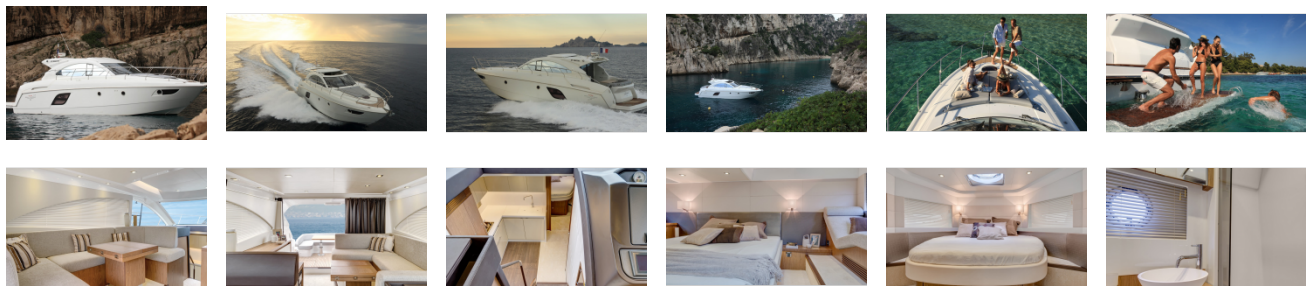
ELECTRICITY

- 8 Batteries 12 V (4 engine batteries 50 Amp + 4 service batteries 140 Amp)
- 3 Bilge pumps: 2 electric - 1 manual
- 2 Extinguishers
- Inverter 24 V / 110 V
- Load balancer
- Battery charger 24 V 60 Amp
- 12 Interior power outlet 110 V
- 110 V Shore power supply
- Spotlight and reading lighting
- 13,5 kVA Generator / 230 V / 60 Hz
- Glendinning cable master system

PLUMBING

- 2 x 320 L / 2x85 US Gal Rotomolded water tanks
- Stainless steel water fill
- Water pump for pressurizing hot/cold water system
- 60 L / 16 US Gal Water heater working off engine exchanger and 110 V
- Fresh water inlet

GALLERY



Yachting Solutions
229 Commercial Street
Rockport, ME, US
Phone: (207) 236-8100