



**Yachting Solutions**  
229 Commercial Street  
Rockport, ME, US  
Phone: (207) 236-8100

# Beneteau Gran Turismo 50 Sportfly

Boat Type: Sport Fishing



## OVERVIEW

Enjoy the thrill of the Sportfly version of Beneteau's flagship sport cruiser. Its second driving station has a spectacular view of the sea and, like many other details on this boat it is simply terrific !

With a sporty look and equipped with the latest technology, the Gran Turismo 50 Sportfly is the paragon of thrills and lifestyle. With Volvo IPS 600 engine power on an AirStep® planing hull, driving sensations are second to none. Seamlessly integrated into the slender line of the boat, the Sportfly has a twin bench seat that converts into a sun-lounger on the driver's side. A large protected lounge continues the cockpit on the main full-space deck and the interior and exterior merge seamlessly. An exterior galley is discretely located in the cockpit and can be enhanced with a worktop and grill at the stern. The tender garage, which is reached by the submersible swim platform, is ideal for a wide variety of water sports.

Her style and materials are the hallmark of an exceptional boat, with deep pore walnut woodwork, padded and lacquered items, soft-touch leatherette upholstery, Corian® worktop to name but a few. Each material is rigorously selected and skilfully crafted.

In the two cabin and 'cosy saloon' or three cabin version, the owner suite is bathed in light and boasts a very high level of comfort: full beam it accommodates an en-suite shower room, as well as dressing room-style storage. The fully fitted galley is reached by the portside companionway. Its atmosphere is bright and contemporary and it is wonderfully practical.

The Gran Turismo 50 boasts larger than life sensations. She is sporty, comfortable and offers a feeling of freedom and space – setting new standards in sport cruising.

## SPECIFICATIONS

### Basic Information

Manufacturer:	Beneteau	Boat Type:	Sport Fishing
Model:	Gran Turismo 50 Sportfly	Hull Material:	
Year:	2020	Hull Type:	
Category:	Power		

### Dimensions & Weight

Length:	50.00 ft	Draft - max:	-
LOA:	51 ft 9 in - 15.77 meter	Bridge Clearance:	-
Beam:	14 ft 5 in - 4.4 meter	Dry Weight:	29115 ft
Deadrise Aft:	-		

### Tank Capacities

Fuel Tank:	172 gallons - 2 tank(s)	Holding Tank:	-
Fresh Water Tank:	106 gallons - 1 tank(s)		

### Accommodations

Total Cabins:	-	Crew Cabins:	-
Total Berths:	-	Crew Berths:	-
Total Sleeps:	-	Crew Sleeps:	-
Total Heads:	-	Crew Heads:	-
Captains Cabin:	No		

## FEATURES

## STANDARD EQUIPMENT

## CONSTRUCTION

## HULL

- Air Step system ®
- White hull
- Composition:
  - Sandwich (polyester resin - fiberglass - balsa core)
  - Hull counter molding laminated in monolithic (polyester resin - fiberglass)
  - Molding by infusion
- 9 Opening portholes (fitted with curtains)

## DECK

- Composition:
  - Sandwich (polyester resin - fiberglass - balsa core)
  - Deck counter molding laminated in monolithic (polyester resin - fiberglass)
  - Molding by infusion

## DECK EQUIPMENT

- Courtesy light in cockpit
- Navigation lights

## MOORING - ANCHORING GEAR

- Bow fitting with anchor securing system
- 2 000 W Electric windlass (with remote control)
- 2 Forward cleats, 2 central and 4 aft in stainless steel

## SAFETY ON DECK

- Half open pulpit in stainless steel with guardrail and handrail
- 2 Stainless steel handrails on access to sidedeck steps
- 1 Taupe faux leather hand rail, behind the cockpit bench seat

## COCKPIT

- Access through a gate
- 8-seater outside benchseat (convertible into sunbed with optional table)
- Space for life raft for 12 people
- Storage locker for mooring lines and fenders
- Cockpit shower hose with hot water mixer tap / Cold water
- Swim platform
- Access cover to the engine room
- Access to the port side deck from the swim platform and the cockpit
- Stainless steel swimming ladder

- Garage for semi-rigid tender and engine about 2,90 m / 9'5"
- Electrically-opened, using 2 electric struts
- Access to engine room by the garage
- Aft galley (Option)

#### SPORT FLY (only on Sport fly versions)

- Ladder to access in the cockpit
- U-shaped salon for 6 persons
- Teak table
- Two seater copilot bench, convertible into sun pad
- Pilot seat
- Instrument panel
- Engine function indicators on 4" digital display (Volvo)
- Space for electronics (12")

#### INTERIOR

- Brown oak laminated floors
- Woodwork Alpi matt walnut (standard)
- Woodwork brushed Alpi oak (Option)
- Teak floor in salon (Option)
- Carpet (Option)
- Choice of assorted interior and exterior upholstery:
  - PVC Marlin Brilliant White (standard)
  - Twin colored Marlin Brilliant White & Valencia Sisal PVC
  - Sumbrella Chartres Dove

#### WHEELHOUSE

Headroom: 2,10 m / 6'11"

- 4-panel sliding window door with curtains (mirror tinted)
- Lights (spotlights and indirect lights)

#### STEERING STATION

- Transparent windscreen, black-lacquered mullions
- 2 Windscreen wipers with washers
- Defogging system
- Pilot and copilot bench with Bolster function, Black and Taupe PVC upholstery
- White dashboard, Gloss black dashboard & Black faux leather padding
- Compass
- Engine function indicators on 4" VOLVO digital display
- USB socket (12 V)
- Glove box
- Space for electronics (16" or 19")
- 1 Taupe faux leather hand rail

- 2 Cup holders
- Opening porthole (starboard)
- Fiberglass hard-top with built-in electric sunroof (only on Hardtop versions)

## SALON

Wheelhouse salon:

- 2 Large electric side glazed windows (Option)
- Bench seat 6 persons and wooden table matching the woodwork, Pedestal electric table
- 2 seats facing sofa
- Stool
- Space for 40" screen television, Bose speakers (options)
- 2 110V Sockets
- Pre-wiring for 32" TV, Atoll audio system, Bose 2.1 Loudspeakers

## LOWER SALON (2 cabin layout)

Headroom: 1,98 m / 6'6"

- Bench seating - 4 people
- Storage cupboards
- Opening hull porthole in salon
- 110 V Power outlet
- Pre-wiring for 22" TV

## OR: 3RD CABIN (3 cabin layout)

- 2 Single berths
- Marine mattress
- Hanging locker + Storage cupboards
- 110 V Power outlet

## GALLEY(Lower galley version)

Headroom: 1,98 m / 6'5"

- Stainless steel sink with mixer tap
- Ceramic hob, 2 burners
- Counter-top in light grey Corian
- Microwave oven and grill
- 2 Drawer refrigerators (90 L)
- Cutlery storage
- Garbage bin
- Opening hull porthole
- Storage cupboards, Magic corner
- Taupe lacquered finish furnishing
- 2 110V Sockets

## GALLEY (Upper galley version)

Headroom: 2,10 m / 6'11"

- Galley unit:
  - Stainless steel sink with mixer tap
  - Ceramic hob, 2 burners
  - Corian countertop
  - Storage
  - Garbage bin
  - Drawer refrigerator (75 L)

- Low stowage space:
  - Corian countertop
  - Microwave oven and grill
  - 190 L Fridge Freezer
  - Cutlery storage
  - Opening hull porthole
  - Storage cupboards, Magic corner
  - Taupe lacquered finish furnishing
  - 2 220V Sockets

#### OWNER'S CABIN (AFT)

Headroom: 1,89 m / 6'2"

- Double berth (1,62 m x 1,94 m / 5'4" x 6'4")
- Bed mounted on cylinder lifts with 3 stowage compartments
- Marine mattress with slatted base
- Padded bed headboard
- 2 Bedside tables, Hanging lockers, 6 Storage lockers
- Spotlight and reading lighting, & Indirect light
- 2 110V Sockets
- 2 Panoramic opening porthole-fitted windows with blinds
- Space for LED 32" screen television
- Mirror
- Pre-wiring for 32" TV, Atoll audio system, Bose 2.1 Loudspeakers

#### OWNER'S HEAD COMPARTMENT

Headroom: 1,95 m / 6'5"

- Electric toilet Tecma
- Shower separated by translucent door
- Sink with mixer tap
- Mirror and storage space
- Automatic shower water drainage
- 110 V Power outlet
- Opening hull porthole

#### VIP CABIN (FORWARD)

Headroom: 1,96 m / 6'5"

- 1 Double berth (1,42 x 1,90 m / 4'8" x 6'3")
- Marine mattress with slatted base
- 2 Panoramic opening porthole-fitted windows with blinds
- Hanging locker, Shelves
- 110 V Power outlet
- Spotlight and reading lighting, & Indirect light
- Mirror
- Pre-wiring for 22" TV, Atoll audio system, Fusion Loudspeakers

#### VIP HEAD COMPARTMENT

Headroom: 1,97 m / 6'5"

- Electric toilet Tecma
- Shower separated by translucent door
- Sink with mixer tap
- Mirror and storage space
- Automatic shower water drainage
- 110 V Power outlet
- Opening hull porthole

#### **ENGINE**

Propulsion IPS:

- Volvo 2 x IPS 600 - 2 x 435 HP/HP Diesel (2 x 320 kW) EVC-E + Joystick
- Fuel filter with decanter
- Sea water filter
- Air intakes on the deck for engine compartment cooling
- Hot air extraction forced by electric ventilators
- Engine room foam soundproofed
- Fire extinguishing system activated from the steering station
- Stainless steel fuel fill
- 2 x 650 L / 172 US Gal Rotomolded fuel tanks
- Bow thruster

Steering system:

- Hydraulic steering

- 2 Outdrives with counter rotating propellers

Volvo Software:

- Trip computer
- Cruise control
- Single lever
- Low speed

## **ELECTRICITY**

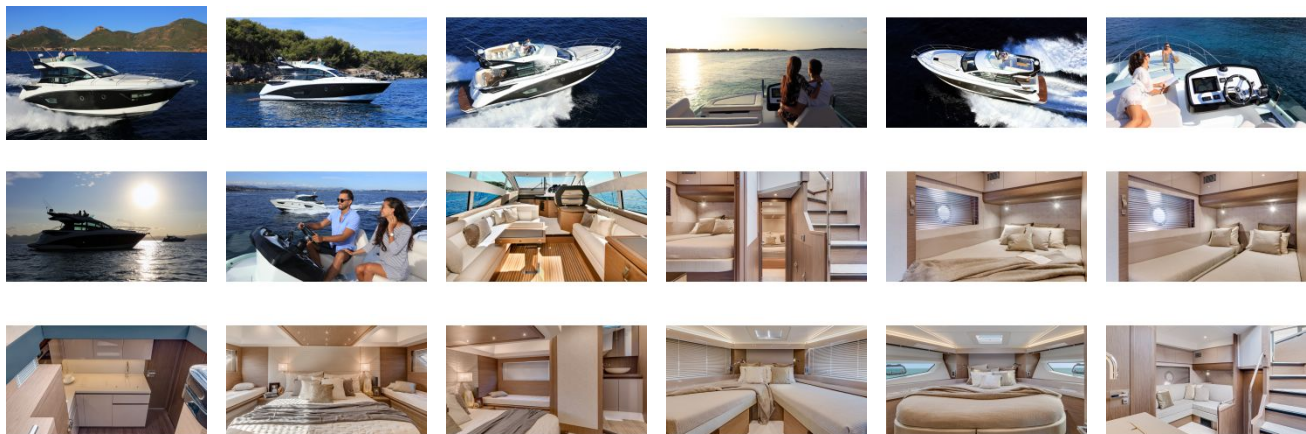
- 24/110V electrical panel with Scheiber screen for controlling electrical appliances
- Radio-controlled wireless switches (without battery)
- 2 110 V - 50 Hz 63A shore supply with 15 m cable
- 8 Batteries 12 V (4 engine batteries 50 Amp + 4 service batteries 140 Amp)
- 2 Electric bilge pumps
- 2 Extinguishers
- 12/24V inverter
- Battery charger 24 V 60 Amp
- Interior power outlet 110 V
- Spotlight and reading lighting
- 11 KVA 230 V / 60 Hz Generator
- 2 KVA - 115 V - 50 Hz Inverter

## **PLUMBING**

- 1 400 L / 106 US Gal Rotomolded water tank
- Stainless steel water fill
- Water pump for pressurizing hot/cold water system
- 60 L / 16 US Gal Water heater working off engine exchanger and 110 V
- Shore freshwater supply



GALLERY



**Yachting Solutions**  
229 Commercial Street  
Rockport, ME, US  
Phone: (207) 236-8100