



Viage Group
7981 N Tamiami Trail
Sarasota, FL, US
Phone: 941.444.5375

Beneteau Swift Trawler 50

Boat Type: Trawler



OVERVIEW

The Swift Trawler 50 is the result of the continued collaboration of the Beneteau powerboat design office with naval architect Michel Joubert and interior designer Pierre Frutschi. Her contemporary constructed hull, specially designed for IPS engines (2 IPS 600), boasts outstanding stability, safety, and maneuverability.

Built for long-distance cruising, the Swift Trawler 50 cleverly maximizes autonomy. Fitted with a large U-shaped galley, washing machine and tumble drier, she is available with three large double cabins or two double cabins with an office and extra berth. Ideally located at the center of the boat, the en suite owner's quarters have separate shower and head compartments. A few simple steps and the converting sofa with a separating curtain, turns the salon into an extra cabin. Finished in rich mahogany paired with your choice of contemporary decoration, she will define elegance.

SPECIFICATIONS

Basic Information

Manufacturer:	Beneteau	Boat Type:	Trawler
Model:	Swift Trawler 50	Hull Material:	Fiberglass
Year:	2020	Hull Type:	
Category:	Power		

Dimensions & Weight

Length:	50.00 ft	Draft - max:	3 ft 5 in - 1.04 meter
LOA:	49 ft 2 in - 14.99 meter	Bridge Clearance:	21 ft 9 in - 6.63 meter
Beam:	15 ft 3 in - 4.65 meter	Dry Weight:	35264 ft
Deadrise Aft:	-		

Tank Capacities

Fuel Tank:	714 gallons - 2 tank(s)	Holding Tank:	13 gallons - 1 tank(s)
Fresh Water Tank:	212 gallons - 2 tank(s)		

Accommodations

Total Cabins:	3	Crew Cabins:	1
Total Berths:	-	Crew Berths:	-
Total Sleeps:	-	Crew Sleeps:	-
Total Heads:	2	Crew Heads:	-
Captains Cabin:	No		

FEATURES

STANDARD EQUIPMENT

CONSTRUCTION

HULL

- Composition:
- Sandwich (polyester resin - fiberglass / balsa core)
 - White gel coat
 - Structural hull counter molding in monolithic laminate
- Profile:
- Semi-planning hull

DECK

- Composition:
- Sandwich (polyester resin - fiberglass / balsa core)
 - White gel coat
 - Diamond tip type non-slip surface
 - Structural counter molding in monolithic laminate

DECK EQUIPMENT

- Teak toerails
- Gangway door to starboard, Stainless steel handrail
- Water filling drain plug
- Fuel filler
- Wastebin access hatch

MOORING - ANCHORING GEAR

- Dolphin nose, stainless steel structure with teak plank
- Swivel bow fitting in stainless steel
- Electric windlass Lewmar 24V 2000W

(chain grab for 12mm chain and gipsy head for buoy line)

(peel strength of windlass 1500kg)

(speed 27m/min)

- Remote control in mooring locker + Windlass control from wheelhouse and flybridge helm stations
- 2 Mooring lockers
- 6 Aluminum mooring cleats (400 mm) (2 forward - 2 amidships - 2 aft), Stainless steel gunwale guards
- 2 Stainless steel fairleads to aft of cockpit

SAFETY ON DECK

- High bulwarks (65 cm) ensuring protection right around the deck
- Stainless steel bow pulpit
- Stainless steel and teak cockpit surround
- On flybridge: stainless steel pulpit completely surrounding aft of flying bridge with stainless steel guardrails on snap shackles to facilitate launching of dinghy and life raft

COCKPIT

- Teak slatted self-draining cockpit
- 1 Gangway door to protect cockpit against wind and spray
- Stainless steel stanchion on flybridge
- Teak-slatted L-shaped cockpit bench seat
- Access hatch to lazarette or crew cabin (according to the layout)
- Access hatch to engine compartment
- Access stairway to flybridge with propane bottle storage position
- Access door to aft swim deck
- Sunbathing platform with solid wood slats and stainless steel protection
- Retractable ladder in swimming platform with solid wood steps and stainless steel handrails

FLYBRIDGE

- Grey tinted windscreen in PMMA
- Steering console with: Steering compass - Steering wheel - Electrical engine controls, Rudder angle indicator - Rev counter - Fuel gauges - Joystick
- Controls for bow and stern thruster, windlass, trim tab, lighting, navigation lights and foghorn (depending on options)
- Adjustable pilot seat, Adjustable co-driver's seat to port
- Sliding flybridge salon table with extensions
- Bench seat on portside with access to built-in serving hatch
- Starboard bench seat, Storage
- Dual tone PVC Diamante Storm&Snow upholstery on flybridge
- Stainless steel handrail
- Fly console covers + Fly seat covers, to starboard
- Galley unit with sink and hot and cold pressurized mixer tap, Flybridge garbage, Compartment for refrigerator (optional), Electric grill (optional)

- Removable extra lighting
- Storage unit to starboard
- Polyester hoop bar with fitted spotlights and speakers
- Quarterdeck for storing dinghy or for use as terrace
- Space for life raft with stainless steel fixing bolt plates
- Flag pole bracket on starboard aft pulpit
- GRP door with retaining bar to close off access to stairway
- Glass holder - recessed Fly (5)
- Console cover and white Flybridge bench seat

INTERIOR

- Woodwork Alpi Mahogany
- Doors to units for improved fresh air circulation
- Wengé Alpi cabinets base boards
- Edges of steps in Wengé Alpi
- Parquet type laminated floors
- Taupe Cushions
- Pilot bench seat in "PVC"
- Ivory carpet, in Cabins
- LED lighting

SALON

- 2 Leaf aft sliding door with black lacquered aluminium frame, Tinted glass, Blackout curtain
- Sliding, opening side windows in black aluminium and tinted glass, with blinds
- Storage under bench seats
- Salon table in varnished wood, on removable foot, with extension. Tilting for better storage
- 2 Removable armchairs
- Cabinet on portside: bar with storage space and location provided for retractable 32 LED TV (locally installed) as well as for the on-board glassware (optional)
- Illuminated storage recess
- Storage unit with location for Radio/CD/DVD player
- Leather covered stainless steel handrail on ceiling
- Access step to wheelhouse, Courtesy lighting
- Radio/CD/MP3 USB,AUX with 2 speakers in salon and 4 exterior watertight speakers (2 in the cockpit - 2 in flybridge)
- Precabing TV + DVD (DVD Player Fusion® S700, TV not included) with Speakers Bose acoutimass 2_1

GALLEY (U-SHAPED ON STARBOARD)

- Tinted glass sliding window in front of sink with wood blinds)
- Resin worktop with stainless steel 2 basin sink, garbage access
- Mixer tap with hot/cold water under pressure
- 3 Burner gas stove with pot-holder and protective glass cover
- Gas oven
- Garbage locker accessed from gangway
- Exhaust fan
- Plentiful storage with cubbyholes and cutlery drawer
- Polished glass hanging unit with built-in lighting beneath worktop between galley and salon
- Serving hatch unit with "serving tray"
- 2 x 130 L (4,6 cu.ft) refrigerators built into unit to port. (It is possible to have one of the two replaced by a drawer refrigerator with 60 L (2,1 cu.ft) cooling space and 84 L (2,9 cu.ft) freezer compartment as an option)
- Spotlight LED, Sockets

- Stacking storage on fridge unit to store small electrical goods
- Medium size 110 V microwave-oven (1,4 cu ft) to install (galley unit on portside)

DINETTE / SEA BERTH

- Alpi table with adjustable foot, convertible to bench seat/berth
- Storage for extra seat
- Storage for extra backrest
- Sliding window in non-tinted glass
- Storage under bench seats (depending on options)

STEERING STATION

- Raised steering station
- Fresh air intake for salon that can be shut off manually from the helm station, (electrical) with controller on dash board
- Glass holder (2)
- Ergonomic helm console can be raised on gas struts for access to the connections / Space for navigation electronics (up to 2 Raymarine® GS12 navigation displays), Engine instrumentation
- Storage under bench seats (depending on options)
- Lighting for night sailing
- Windscreen in non-tinted glass with defogger
- 3 Windscreen wipers with washer and synchronization system
- Sliding door for access to main side deck with latching system to hold it partially open
- 2 Fixed windows on both sides of the wheelhouse, non-tinted
- Cupboard for 24 V and 220/110 V electrical circuit management
- Pilot bench on storage unit
- Leather covered steering wheel in stainless steel, diameter 70 cm
- Electric steering
- Engine repeaters with rev counters, pressure and temperature indicators fuel gauges
- Volvo EVC screen (with additional software as an option)
- Rudder angle indicator
- Trim tab indicators
- Electric engine control levers
- IPS joystick control
- Steering compass
- Functional controls: wiper, defogging, Fog horn, Navigation lights, Windlass
- Shelving for stowage to port with 3 sockets

FULL WIDTH OWNER'S CABIN

- 2 Panoramic opening porthole-fitted portlights with blinds
- Central double berth with slatted base and marine mattress, mounted on gas strut with storage
- LED deckhead lights, indirect LED lighting, night lights to steps and bedside lights
- Two large, illuminated wardrobes with hanging locker and shelving
- Drawers
- Full height mirror on door
- Leather covered stainless steel handrail
- Desk and seat to port with socket
- Access door to private bathroom
- Access door to private toilets
- Socket
- Precabing TV+ DVD (DVD Player Fusion® S700, TV not included)

MASTER'S TOILET

- Electric Vacu-flush toilet with holding tank in cockpit
- Hand basin

- Magazine storage console, Towel rail

2 HEADS

- Shower compartment with full inner molding
- 80 L water heater / 21 Us Gal
- Teak slatted, built-in seat
- Sockets
- Aluminum strip blinds
- Opening hull porthole
- Waste water drained by gravity to buffer tank (50 L / 13 US Gal)
- Electric Vacu-flush toilet with holding tank in cockpit (Guests head compartment)
- Opening hull porthole
- Thermostatic mixer tap with hot/cold pressurized water supply, in showers area
- Mirror with back lighting
- Toilet accessory rack
- Hooks for towel/mitt
- Towel rail (owner's head)

GUEST CABINS (FORWARD)

- Central Island bed berth mounted on strut for storage
- Slatted bed base
- Marine mattress
- Storage, Hanging locker, Drawers
- Lighting and reading spotlights
- 1 Opening hatch Lewmar® T44 - with blind - Mosquito screen
- 2 Opening hull portholes with curtains
- Full height mirror on door
- Precabing TV+ DVD (DVD Player Fusion® S700, TV not included)

GUEST CABINS (PORTSIDE)

(Other layout versions available (see Optional extras))

- 2 Individual bunk berths
- Marine mattress
- Hanging locker, Storage space and reading lamps
- Large storage space with sliding tablet (washing machine and dryer with external venting as an option)
- 2 Opening hull portholes with curtains

ENGINE

- 2 Engines 2 x D6 IPS 600 - 2 x 435 CV/HP Diesel (2 x 320 kW)
- Propellers jackshaft DP
- Fuel tanks: 2 x 1 350 L / 2 x 357 US Gal, inter-connected and pre-fitted for FPS connection system (Fuel Polishing System)
- Foam soundproofing in engine compartment
- Side air intakes
- 2 Electric engine hold ventilators
- Extinguishers in engine hold with remote controls
- Inert gas system for engine protection
- Batteries centred beneath slatted floor
- Electrical boxes
- Bow thruster

Softs Volvo:

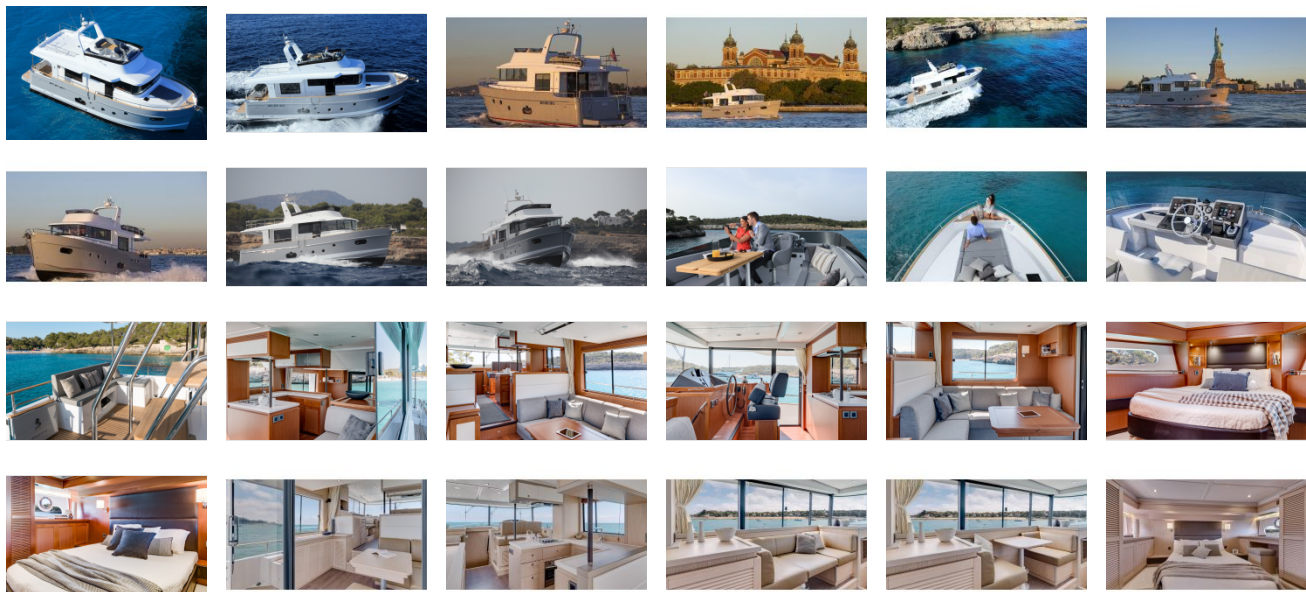
- Trip computer

- Cruise control
- Single lever
- Low speed

ELECTRICITY

- 24/110 V Electrical panel
- Electrical battery switches
- Radio-controlled wireless switches (without battery)
- 2 220 V - 60 Hz 50A shore supply with 15 m cable
- sockets in salon, galley, wheelhouse and cabins
- Inverter 12 V / 24 V
- 12 V power outlet in wheelhouse
- 4 140 Ah service batteries and 4 x 50 Ah starter batteries
- Windlass
- Electric trim tabs Lenco®
- Stainless steel navigation lights
- Mooring light
- 3 Electric windscreen wipers with synchronizing system
- 2 Automatic electric bilge pumps
- 2 Engine compartment ventilators
- Electric water heater on shore supply or on engine heat exchanger (80 L / 21 US Gal)
- Inside lighting, cockpit, alleyways and flybridge
- 13.5 kVA 220 V/ 60 Hz Generator + Cocoon
- Electric winder "type Glendinning" shore power cord reel with remote control

GALLERY



Viage Group
7981 N Tamiami Trail
Sarasota, FL, US
Phone: 941.444.5375