



Viage Group
7981 N Tamiami Trail
Sarasota, FL, US
Phone: 941.444.5375

Beneteau Monte Carlo 5

Boat Type: Cruiser



OVERVIEW

Inspired by the Mediterranean lifestyle, the Monte Carlo 5 has a unique classic appeal. Designed as a genuine living space, the vast shaded Flybridge combines the driving station, sunbathing area, exterior galley and a large saloon for cruises with the essence of perfection. The elegance of its hull together with its Volvo IPS 600 engine promises smooth, high-performance cruising in complete safety.

The fully retracting glass door seamlessly connects the indoor and outdoor spaces, so that the main deck is an unbroken living space. With opposite-facing seats, the lounge brings friendly interaction and a pleasant atmosphere of luxury right into the wheelhouse. The private quarters' three cabins and two heads offer quality accommodation with a focus on detail to each of the six occupants. A choice between an open and contemporary brushed light oak or dark but warmer matt Walnut atmosphere offers many ways to personalize the interior.

SPECIFICATIONS

Basic Information

Manufacturer:	Beneteau	Boat Type:	Cruiser
Model:	Monte Carlo 5	Hull Material:	Fiberglass
Year:	2020	Hull Type:	
Category:	Power		

Dimensions & Weight

Length:	50.00 ft	Draft - max:	4 ft 2 in - 1.27 meter
LOA:	49 ft 6 in - 15.09 meter	Bridge Clearance:	19 ft 2 in - 5.84 meter
Beam:	14 ft - 4.27 meter	Dry Weight:	31381 ft
Deadrise Aft:	-		

Tank Capacities

Fuel Tank:	344 gallons - 2 tank(s)	Holding Tank:	-
Fresh Water Tank:	158 gallons - 2 tank(s)		

Accommodations

Total Cabins:	3	Crew Cabins:	-
Total Berths:	-	Crew Berths:	-
Total Sleeps:	-	Crew Sleeps:	-
Total Heads:	2	Crew Heads:	-
Captains Cabin:	No		

FEATURES

STANDARD EQUIPMENT

CONSTRUCTION

HULL

- Composition:
- White Cream Gelcoat
 - Sandwich (polyester resin - fiberglass - balsa core)
 - Structural hull counter molding in monolithic laminate (polyester resin - fiberglass)
 - 12 Portholes including 10 Opening portholes

DECK

- Composition:
- Composition:
- White Cream Gelcoat
 - Sandwich (polyester resin - fiberglass - balsa core)
 - Diamond tip type non-slip surface
 - Structural deck counter molded in monolithic laminate

DECK EQUIPMENT

- Radar support in stainless steel
- Navigation lights
- LED courtesy lights in gangways, Steps and Stern deck

MOORING - ANCHORING GEAR

- Bow fitting
- Electric windlass 24V, Power 2000 W
- Remote control in mooring locker + Windlass control from wheelhouse and flybridge helm stations
- 2 Mooring lockers
- 2 Forward cleats, 2 central and 4 aft in stainless steel
- 4 Stainless steel fairleads to aft of cockpit

SAFETY ON DECK

- Stainless steel half open pulpit with teak step and hand rail
- Open pulpit port and starboard
- 2 Stainless steel handrails on access to sidedeck steps
- 1 Hand rail on rear table

DECK

- 3 Cup holders
- 1 Opening deck hatch, 1 fixed hatch

COCKPIT

- Gate access (starboard)
- 6 People salon
- Uphostery PVC Diamante Snow, piping Diamante Espresso, Open cell foam
- Access hatch to engine compartment
- Access hatch to large storage locker (standard) or crew cabin (optional)
- Cockpit shower hose with hot water mixer tap / Cold water
- Access stairway to flybridge, built-in storage locker
- Solid wood swim platform
- Retractable ladder in swimming platform with solid wood steps and stainless steel handrails
- Direct and indirect LED lighting

FLYBRIDGE

- Grey tinted windscreen, surrounded by stainless steel frame
- Steering console with: Steering compass - Steering wheel - Electrical engine controls - Rudder angle indicator - Rev counter - Fuel gauge - 12 V Power outlet - IPS joystick
- Controls for windlass, trim tabs, lighting, navigation lights, Bilge pumps
- Besenzoni pilot seat
- 2 Cup holders + Glove box
- Two seater co-pilot bench to port, convertible into sunpad (2 m x 1,05 m / 6'7" x 3'5")
- Salon, 8 people
- Natural solid wood folding table, with 4 integrated cup holders
- Galley unit: Sink hot water / Cold water, Electric grill (optional), Storage, Garbage bin. Solid wood doors and countertop
- Radar support hoop, Aerials and lights in black lacquered polyester
- Courtesy lighting (LED)

- Exterior upholstery PVC Diamante Snow, piping Diamante Espresso, Open cell foam
- 1x Simrad NSS 12" evo2
- Bow thruster control

INTERIOR

- Choice of wood interior: Alpi brushed Oak or Alpi mat Walnut
- Laminate floors in the galley : Brun Oak (standard) or Teak slatted (optional)
- Ivory carpet in salon and cabins
- Teak slatted floor in head compartments

WHEELHOUSE

Headroom: 1,99 m / 6'6"

- Mirror tinted glass bay window and stainless steel frame with full opening (1 opening and 2 folding). Curtains in Cream
- "Roman" blinds in "Cream" fabric
- Direct and indirect LED lighting
- Electrical panel 24V/110V, starboard side of the entrance

STEERING STATION

- One-piece windscreen, in non-tinted laminated glass
- Mirror tinted side windows, 2 openings (port and starboard)
- 2 Windscreen wipers with washers
- Defogging system
- Pilot and copilot bench with Bolster function, PVC upholstery (standard) or leather (optional)
- Storage drawer under bench seat
- Dashboard with Clay metallic paint
- Volvo EVC screen (with additional software as an option)
- Rudder angle indicator
- Trim tab control
- Volvo throttle & controls
- IPS joystick
- Steering compass
- Functional controls: wiper, defogging, Fog horn, Navigation lights, Windlass
- Glove box
- 2x Simrad NSS 12" evo2
- 1 12 V Power outlet
- SIMRAD VHF coupled to AIS US system receiver
- SIMRAD Broadband 4G Radar
- SIMRAD Auto pilot
- SIMRAD Module - Wifi connection
- Bow thruster control

SALON

- Sofa 4-6 seats, upholstery "Divine" fabric, with pillows of comfort
- 2 seats facing sofa, Upholstery "Divine" fabric, with pillows of comfort
- Foldable table, "Stonegrey" or "Bordeaux Red" leather panel
- 3 Storage drawer under sofas
- 32" LED TV precabing + Bose 2.1 Hi-fi system
- Fusion 700 Audio/DVD player + Dock iPod + Bluetooth connection + 2 Remote controls (cockpit and flybridge) + Outside speakers

- 1 110 V Power outlet

GALLEY

Kitchen-type layout

- Optimum storage space: "magic corner"
- Stainless steel sink with mixer tap
- Ceramic hob (2 burners) Kenyon
- Corian countertop
- Fridge freezer + ice maker with drawers : 150 L / 40 US Gal Standard (or 225 L / 59 US Gal optional) (High cabinet galley layout)
- Cutlery & glasses storage
- Garbage bin
- Lacquer finished furniture
- 2 110 V Power outlets

OWNER CABIN (AFT)

Headroom: 1,85 m / 6'1"

- Full beam cabin
- Double berth (2,03 m x 1,56 m / 6'8" x 5'1")
- Marine mattress with bed base
- Padded bed head board
- 2 Bedside tables with drawer and reading light
- 2 Illuminated wardrobes with hanging locker and shelving
- Direct and indirect LED lighting
- 2 110 V Power outlets
- 2 Panoramic opening porthole-fitted portlights with blinds, Cream blackout curtain
- Space for 32" LED TV (Optional equipment)
- Storage cupboards (port and starboard)
- Mirror

OWNER HEAD COMPARTMENT

Headroom: 2 m / 6'7"

- Electric toilet Vacuflush + shared rigid holding tank (150 L / 40 US Gal)
- Separated shower stall with stainless steel profiled doors
- Teak slatted seat
- Shower with mixer tap
- Sink with mixer tap fitted
- Mirror and storage space
- Automatic shower water drainage (by gravity, towards a reserve plug 50 L / 13 US Gal)
- 1 110 V Power outlet
- Opening hull porthole with Cream blackout blinds
- 1 Towel rail
- 32" LED TV precabing + Bose 2 Hi-fi system + Fusion Audio/DVD player + Dock iPod

VIP CABIN (FORWARD)

Headroom: 1,94 m / 6'4"

- Double berth (1,95 m x 1,50 m / 6'5" x 4'11")
- Marine mattress with bed base
- Padded bed head board
- 4 Opening hull portholes, with shades, Cream blackout curtain

- Long natural light wells, with opening deck hatch, fitted blinds and mosquito screens
- 2 Illuminated wardrobes with hanging locker and shelving
- Storage
- 2 Drawers beneath bunk for storage
- 2 110 V Power outlets
- Direct and indirect LED lighting
- 26" LED TV precabing + Bose 2 Hi-fi system + Fusion Audio/DVD player + Dock iPod

VIP HEAD COMPARTMENT

Headroom: 2 m / 6'7"

- Electric toilet Vacuflush + shared rigid holding tank (150 L / 40 US Gal)
- Separated shower stall with circular door
- Sink with mixer tap fitted
- Shower with mixer tap
- Mirror and storage space
- Automatic shower water drainage (by gravity, towards a reserve plug 50 L / 13 US Gal)
- Opening hull porthole with "Cream" blinds
- 1 Towel rail
- 1 110 V Power outlet

GUEST CABIN (SIDE)

Headroom: 1,98 m / 6'6"

- 2 Bunk beds: 1,98 m x 0,62 m and 1,98 m x 0,77 m / 6'6" x 2'0" and 6'6" x 2'6"
- Marine mattresses
- Padded bed headboards
- 2 Opening hull portholes, with shades, Cream blackout curtain
- Bedside tables with drawer and reading light
- 1 110 V Power outlet
- Hanging locker with lighting
- 22" LED TV precabing + Bose 2 Hi-fi system + Fusion Audio/DVD player + Dock iPod

ENGINE

Pods propulsion:

- Volvo 2 x IPS 600 - 2 x D6 435 CV/HPDiesel (2 x 307 kW) EVC-E
- Fuel filter with decanter
- Sea water filter
- Air intakes on the deck for engine compartment cooling
- Hot air extraction forced by electric ventilators
- Engine room foam soundproofed
- Fire extinguishing system activated from the steering station (wheelhouse and Fly)
- Stainless steel fuel fill
- 2 x 650 L / 2 x 172 US Gal Aluminium fuel tanks

Steering system:

- Electric steering
- 2 Outdrives with counter rotating propellers "Jackshaft"
- IPS joystick control (wheelhouse & flybridge)

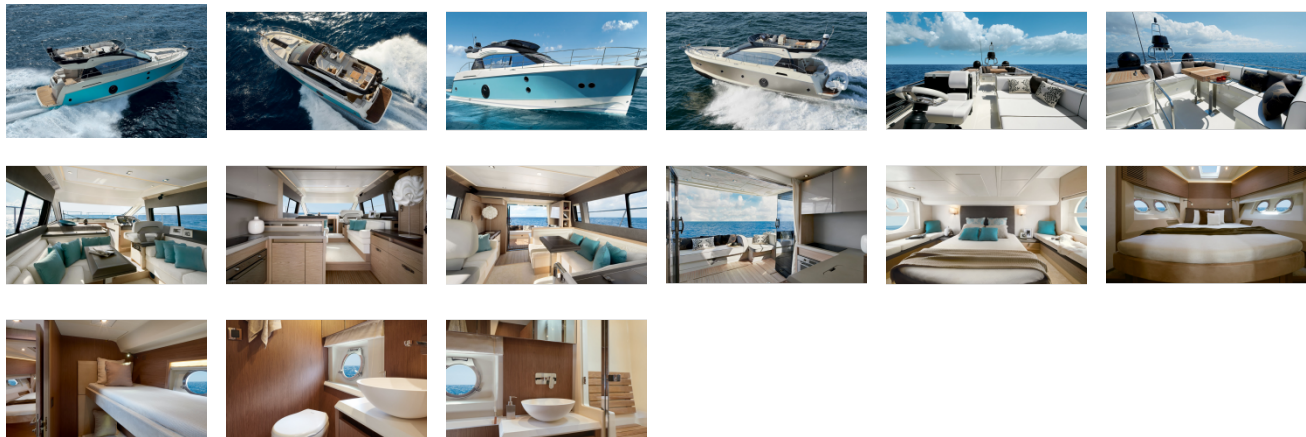
ELECTRICITY

- 24 V 110 V Electrical panel
- 8 12 V batteries (4 engine batteries: 50 Amp + 4 service batteries: 140 Amp)
- Radio-controlled wireless switches (without battery)
- 2 110 V - 60 Hz 63A shore supply with 15 m cable (or 2 220 V - 60 Hz according to country)
- 3 Bilge pumps: 2 electric - 1 manual
- 1 Extinguisher
- 12 V / 110 V inverter - 2000 VA
- Load balancer
- Battery charger: 24 V 60 Amp
- Standard equipment: 13 power outlet 110V: in salon, Galley, heads and cabin
- 12V Power outlet at steering stations (1 wheelhouse and 1 flybridge)
- Direct and indirect LED LED (internal and external)
- Cabin sockets (USA)
- Platform socket extension cord 110 V + Glendinning 30A
- 13.5 kVA Generator - 230 V / 60 Hz

PLUMBING

- 2 Rotomolded water tanks, 2 x 330 L / 287 US Gal
- Stainless steel water fill
- Water pump for pressurizing hot/cold water system
- 60 L / 16 US Gal water heater working off engine heat exchanger and 110 V

GALLERY



Viage Group
7981 N Tamiami Trail
Sarasota, FL, US
Phone: 941.444.5375