



**Yachting Solutions**  
229 Commercial Street  
Rockport, ME, US  
Phone: (207) 236-8100

# Beneteau Monte Carlo 6s

Boat Type: Cruiser



## OVERVIEW

The hardtop is seamlessly integrated into the slender silhouette of the Monte Carlo 6S, making her the pinnacle of style at sea. Fitted with two Cummings 600 hp engines, she reaches top speeds of 28 knots offering sheer pleasure underway. Really high-performing, the Zeus pod system offers 30% fuel savings in relation to a standard shaftline.

Perfectly ventilated by the opening sunroof, the main deck seamlessly connects the saloon, steering station and galley. With an incredibly spacious distribution of volumes, the luxury of the interior fittings will immediately set you at ease. Below deck on the Monte Carlo 6S, the three magnificent impeccably finished cabins, en-suite with shower room, offer incredibly elegant owners and guests accommodation.

SPECIFICATIONS

Basic Information

Manufacturer:	Beneteau	Boat Type:	Cruiser
Model:	Monte Carlo 6s	Hull Material:	Fiberglass
Year:	2020	Hull Type:	
Category:	Power		

Dimensions & Weight

Length:	60.00 ft	Draft - max:	3 ft 10 in - 1.17 meter
LOA:	60 ft 2 in - 18.34 meter	Bridge Clearance:	19 ft 8 in - 6 meter
Beam:	16 ft - 4.88 meter	Dry Weight:	43260 ft
Deadrise Aft:	-		

Tank Capacities

Fuel Tank:	580 gallons - 2 tank(s)	Holding Tank:	-
Fresh Water Tank:	210 gallons - 2 tank(s)		

Accommodations

Total Cabins:	3	Crew Cabins:	1
Total Berths:	-	Crew Berths:	-
Total Sleeps:	-	Crew Sleeps:	-
Total Heads:	3	Crew Heads:	1
Captains Cabin:	No		

FEATURES

STANDARD EQUIPMENT

CONSTRUCTION

HULL

- Composition:
- White Cream Gelcoat
  - Sandwich (polyester resin - fiberglass - balsa core)
  - Structural hull counter molding in monolithic laminate (polyester resin - fiberglass)
  - 13 Portholes including 12 Opening portholes

DECK

- Composition:
- White Cream Gelcoat
  - Sandwich (polyester resin - fiberglass - balsa core)
  - Diamond tip type non-slip surface
  - Structural deck counter molded in monolithic laminate

## **DECK EQUIPMENT**

- Navigation lights
- LED courtesy lights in gangways, Steps and Stern deck

## **MOORING - ANCHORING GEAR**

- Bow fitting
- Electric windlass 24V, Power 2 000 W
- Remote control in mooring locker + Windlass control from wheelhouse and flybridge helm stations
- 2 Mooring lockers
- 2 Forward cleats, 2 central and 4 aft in stainless steel
- 6 Stainless steel fairleads to aft of cockpit

## **SAFETY ON DECK**

- Stainless steel half open pulpit with teak step and hand rail
- Stainless steel pulpit surrounding all flybridge
- 2 Stainless steel handrails on access to sidedeck steps
- 1 Hand rail on rear table

## **DECK**

- 4 Cup holders
- 1 Opening deck hatch, 1 fixed hatch
- Storage locker
- Pump for deck washing
- Dock access doors

## **COCKPIT**

- Gate access (starboard)
- 6 People salon
- Uphostery PVC Diamante Snow, piping Diamante Espresso, Open cell foam
- Access hatch to engine compartment
- Liferaft storage or storage locker under cockpit floor
- Access door for large storage room (standard) or crew cabin (option)
- Cockpit shower, with mixing tap hot/cold water
- Access stairway to hard top
- Retractable ladder in swimming platform with solid wood steps and stainless steel handrails
- Direct and indirect LED lighting
- Teak floor
- 2 110 V shore power
- Aft camera
- Pump for deck washing
- Dock water inlet

## **HARD TOP**

- Grey tinted windscreen, surrounded by stainless steel frame
- Steering console with: Steering compass - Steering wheel - Electrical engine controls - Rev counter - Fuel gauge - Joystick
- Controls for windlass, trim tabs, lighting, navigation lights, Bilge pumps
- Adjustable pilot seat
- 2 Cupholders and storage tray

- Two seater co-pilot bench to port
- Salon, 8 persons seating
- Natural solid wood folding table
- Aft sun deck (3 people)
- Galley unit: Sink hot water / Cold water, Electric grill (optional), Storage, Corian "Sand" countertop
- Radar support hoop, Aerials and lights in black lacquered polyester
- Courtesy lighting (LED)
- Exterior upholstery PVC Diamante Snow, piping Diamante Espresso, Open cell foam
- 4G Simrad Radar
- Bow thruster control
- 1 Multifunction SIMRAD NSO 16" evo2 display
- TV Pre-wiring

## **INTERIOR**

- Slatted teak floor in galley (standard)
- Ivory carpet in salon and cabins
- Teak head floors or Corian color "Bone"
- Choice of wood interior: Alpi brushed Oak or Alpi mat Walnut

## **WHEELHOUSE**

Headroom: 1,95 m / 6'5"

- Mirror tinted glass Bay window and black painted frame with full opening (1 opening and 2 folding). Curtain "Cream"
- "Venitian" blinds in lacquered wood "Cream"
- Direct and indirect LED lighting
- Port electric switchboard in companionway (24V/110V)

## **STEERING STATION**

- One-piece windscreen, in non-tinted laminated glass
- 1 Central windscreen wiper with washer
- Defogging system
- Pilot bench and double co-pilot bench, or "Seagull Besenzoni" Pilot seat with integrated engine controls
- Storage drawer
- Dashboard with "Sand" metallic paint
- 2 Multifunction SIMRAD NSO 16" evo2 displays (Starboard and port)
- Simrad Autopilot
- Simrad Broadband 4G Radar
- Simrad Wifi unit
- Simrad AIS receiver
- Simrad VHF RS 90 double station
- Bow thruster control
- Trim tab control
- CUMMINS throttle & controls
- Joystick "ZEUS"
- Steering compass
- Functional controls: wiper, defogging, Fog horn, Navigation lights, Windlass
- Glove box
- 1 12 V Power outlet

## **SALON**

- Mirror tinted side windows, 2 openings (port and starboard)
- 6 seater sofa upholstered in "Mondo Cream" fabric
- 2 seats facing sofa, upholstery "Mondo Cream" fabric
- High-low electric table, leather top "Eclectic Brown" or "Bordeaux Red"
- Pre-wiring for 40" TV + Bose Lifestyle 535 Hi-fi system + Blu Ray player + Apple TV
- 1 110 V Power outlet

## **GALLEY**

Kitchen-type layout

- Stainless steel sink with mixer tap
- 3 burner induction stove
- Corian countertop
- 2 Drawer fridges 75L / 20 US Gal
- Cutlery storage
- Garbage bin
- Lacquer finished furniture
- 110V Adapter for stove hood
- Microwave oven and grill
- 2 110 V Power outlets
- Freezer icemaker

## **OWNER CABIN (AFT)**

Headroom: 1,92 m - 2,03 m / 6'4" - 6'8"

- Full beam cabin
- Double berth (1,95 m x 1,58 m / 6'5"x5'2")
- Marine mattress with bed base
- Padded bed head board, Armani Casa
- 2 Bedside tables with drawer and reading light
- 2 Illuminated wardrobes with double closets and shelves
- Direct and indirect LED lighting
- 2 110 V Power outlets
- 2 Panoramic opening porthole-fitted portlights with blinds, "Cream" blackout curtain
- Location for 32" LED television
- Pre-wiring for 32" TV + Fusion 700 player + Bose Lifestyle 535 Hi-fi system
- 2 Illuminated wardrobes with hanging locker and shelving
- 4 Storage drawer (portside)
- Mirror

## **OWNER HEAD COMPARTMENT**

Headroom: 1,95 m - 2,05 m / 6'5" - 6'9"

- Electric toilet Vacuflush + shared rigid holding tank (208 L / 55 US Gal)
- Italian shower with rain shower column
- Sink with mixer tap
- Mirror and storage space
- Automatic shower water drainage (by gravity, towards a reserve plug 50 L / 13 US Gal)
- 1 110 V Power outlet
- Opening hull porthole with "Cream" blackout blinds
- 1 Towel rail

## **VIP CABIN (FORWARD)**

Headroom: 2,02 m / 6'8"

- Double berth (1,98 m x 1,40 m / 6'6" x 4'7") or two simple beds (sliding system)
- Marine mattress with bed base
- Padded bed head board, Majilite
- 4 Opening hull portholes, with shades, "Cream" blackout curtain
- Long natural light wells, with opening deck hatch, fitted blinds and mosquito screens
- 2 Illuminated wardrobes with hanging locker and shelving
- Storage
- 2 110 V Power outlets
- Direct and indirect LED lighting
- TV Pre-wiring + Fusion 700 player + Bose 2.1 Hi-fi system

## **VIP HEAD COMPARTMENT**

Headroom: 1,95 m - 2,05 m / 6'5" - 6'9"

- Electric toilet Vacuflush + shared rigid holding tank (208 L / 40 US Gal)
- Separated shower stall with door
- Sink with mixer tap
- Shower with mixer tap
- Mirror and storage space
- Automatic shower water drainage (by gravity, towards a reserve plug 50 L / 13 US Gal)
- Opening hull porthole
- 1 Towel rail
- 1 110 V Power outlet

## **GUEST CABIN (SIDE)**

Headroom: 1,87 m - 2,02 m / 6'2" - 6'8"

- 2 Sliding beds, double bed available: 1,91 m x 0,74 m / 6'3" x 2'5" (Single bed) or 1,91 m x 1,48 m / 6'3" x 4'10" (Double bed)
- Marine mattresses
- Padded bed headboards, Majilite
- 2 Opening hull portholes, with shades, "Cream" blackout curtain
- Bedside tables with drawer and reading light
- 1 110 V Power outlet
- Hanging locker with lighting
- TV Pre-wiring + Fusion 700 player + Bose 2.1 Hi-fi system

## **GUESTS HEAD COMPARTMENT**

Headroom: 1,94 m - 2,05 m / 6'5" - 6'9"

- Vacuflush electric day toilet + shared rigid holding tank
- Separated shower stall with door
- Sink with mixer tap, Sink in Corian "Bone"
- Shower with mixer tap
- Mirror and storage space
- Automatic shower water drainage
- Opening hull porthole
- 1 Towel rail
- 1 110 V Power outlet

## ENGINE

Pods propulsion:

- Cummins QSC 8.3 Zeus 2 x 442 kW (2 x 600 HP)
- Fuel filter with decanter (on each engine)
- Sea water filter (on each engine)
- Air intakes on the deck for engine compartment cooling
- Hot air extraction forced by electric ventilators
- Engine room foam soundproofed
- Fire extinguishing system activated from the steering station (wheelhouse and Fly)
- Stainless steel fuel filler
- 2 fuel tanks, each with a 1 100 L (290 US Gal) capacity

Steering system:

- Electrical system
- 2 Outdrives with counter rotating propellers
- Control joystick (wheelhouse & flybridge)
- System Cummins "Skyhook"
- Automatic trim tabs

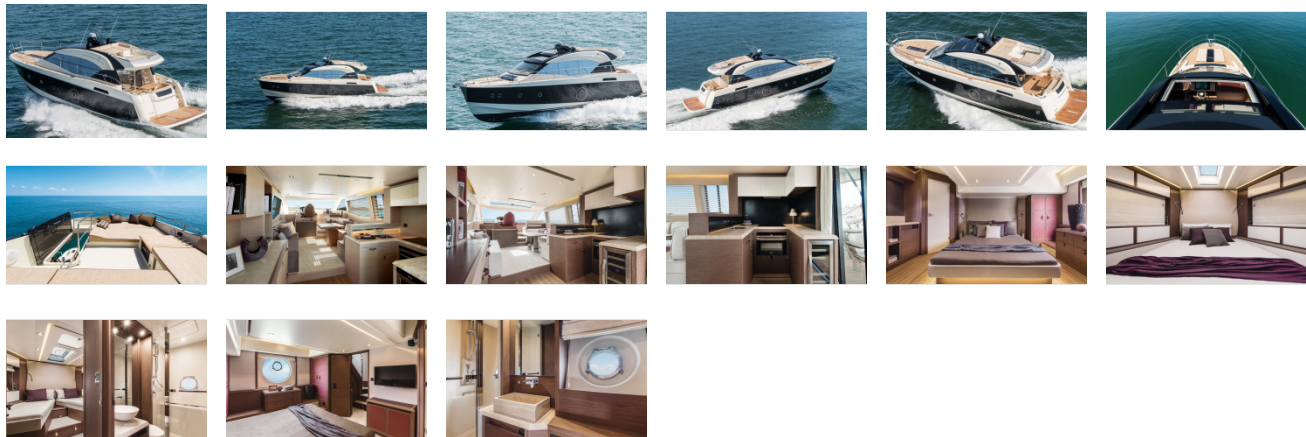
## ELECTRICITY

- 24 V 110 V Electrical panel
- 8 12 V batteries (4 engine batteries: 50 Amp + 4 service batteries: 140 Amp)
- Radio-controlled wireless switches (without battery)
- 2 230 V - 50 Hz 63A shore supply with 15 m cable (or 2 110 V - 60 Hz, according to country)
- 3 Bilge pumps: 2 electric - 1 manual
- 1 Extinguisher
- Inverter: 24 V / 12 V
- Load balancer
- Battery charger: 24 V - 60 Amp
- 110 V power outlet: in salon, Galley, heads and cabin
- 12V Power outlet at steering stations (wheelhouse and flybridge)
- Direct and indirect LED lighting (internal and external)
- 13.5 KVA 110 V / 50 Hz Generator
- Glendinning cable master system - Shore power socket

## PLUMBING

- 2 Rotomolded water tanks, 2 x 400 L / 2 x 105 US Gal
- Stainless steel water fill
- Shore freshwater supply
- Water pump for pressurizing hot/cold water system
- 80 L / 21 US Gal water heater working off engine heat exchanger and 110 V

GALLERY



**Yachting Solutions**  
229 Commercial Street  
Rockport, ME, US  
Phone: (207) 236-8100