



**Knoxville Yacht Sales**  
1914 Ridge Oak Lane  
Knoxville, TN 37922  
Phone: 865-381-1584

# AB Inflatables Ventus 8 VL

Boat Type: Inflatable



## OVERVIEW

Ventus – Latin for “air” – is our line of lightweight tenders. With their low weight to length ratio and balanced design, Ventus boats require very little horsepower to achieve astonishing performance and speeds. They sport a full V-shape hull that runs the entire length of the boat, providing exceptional tracking and stability. Ventus models are the only lightweight boats on the market with an additional air chamber built into the hull. This air chamber makes the Ventus line extremely safe and reliable, while providing a level non-skid floor to keep your cargo and passengers dry. Ventus boats make ideal tenders with plenty of room for carrying crew and provisions.

- Overall Length: 8'6" / 2,60m
- Overall Beam: 5'6" / 1,68m
- Inside Length: 5'10" / 1,79m
- Inside Beam: 2'4" / 0,72m
- Tube Diameter: 16" / 0,40m

- Number of Chambers: 3+1
- Person Capacity: 4
- Weight: 95lbs / 43kg
- Recommended HP: 8hp / 6,0kw
- Maximum HP: 10hp / 7,5kw
- Shaft Length: 15" / 38,1cm
- RDC Design Category: C

## SPECIFICATIONS

### Basic Information

Manufacturer:	AB Inflatables	Boat Type:	Inflatable
Model:	Ventus 8 VL	Hull Material:	Fiberglass
Year:	2018	Hull Type:	Deep Vee
Category:	Power		

### Dimensions & Weight

Length:	8.00 ft	Draft - max:	-
LOA:	8 ft 6 in - 2.59 meter	Bridge Clearance:	-
Beam:	5 ft 6 in - 1.68 meter	Dry Weight:	95 ft
Deadrise Aft:	-		

### Tank Capacities

Fuel Tank:	-	Holding Tank:	-
Fresh Water Tank:	-		

### Accommodations

Total Cabins:	-	Crew Cabins:	-
Total Berths:	-	Crew Berths:	-
Total Sleeps:	-	Crew Sleeps:	-
Total Heads:	-	Crew Heads:	-
Captains Cabin:	No		

## FEATURES

### Standard Equipment

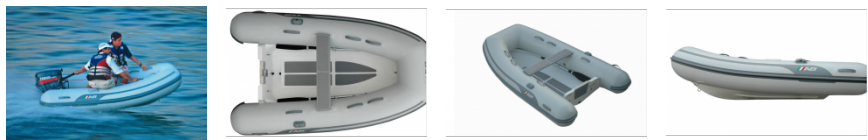
Hand Laid Fiberglass Deep "V" Hull  
 Stringer System Laminated into Hull  
 Non-Skid Rubber Floor Panels  
 Plastic External Transom Plate  
 Aluminum Internal Transom Plate with Security Lip  
 Stainless Steel Bow Eye

3 Stainless Steel Davit Lifting Points  
Inner Hull Drain with Plug  
Deck Condensation Plug  
Orca (CSM) Five Layer Coated Fabric  
Raised Single Rub Rail  
Push Push Plastic Non-Corrosive 2 Stage Inflation Valves  
1 Front & 2 Side Orca (CSM) Fabric Handles on Tubes  
2 Inside Bow Sets of 2 Orca (CSM) Fabric Handles on Tubes  
2 Inside Stern Single Orca (CSM) Fabric Handles on Tubes  
Removable Rowing Seat  
Oarlock Base  
Telescopic Oars with Aluminum Shaft  
Paddle Holders  
Hand Pump  
Maintenance Kit  
Owner's Manual  
Additional Air Retaining Chamber Under the Floor  
3 Layers Reinforced Seams

### **Optional Equipment**

Tube Chaps  
Boat Cover  
Chock Set  
Bow Step with Fold Down Stainless Steel Cleat  
Lateral Fold Down Stainless Steel Cleat

GALLERY



**Knoxville Yacht Sales**  
1914 Ridge Oak Lane  
Knoxville, TN 37922  
Phone: 865-381-1584