



**Knoxville Yacht Sales**  
1914 Ridge Oak Lane  
Knoxville, TN 37922  
Phone: 865-381-1584

# AB Inflatables Oceanus 17 VST

Boat Type: Inflatable



## OVERVIEW

Our Oceanus line of console tenders was designed for professionals and cruisers who depend on serious performance and comfort. These boats feature AB's unique forward-hull design, making them the most spacious console tenders on the market. The extra-deep V-hull and innovative tube design allows the Oceanus to cut through the water with unsurpassed grace, virtually eliminating unwanted spray, for a truly exhilarating cruising experience.

Oceanus boats feature comfortable, upholstered seating, smartly designed consoles, and ample storage lockers that keep gear dry and safe. Boaters looking for an extremely seaworthy, highperformance, rigid inflatable will be pleased to know that several Oceanus models were originally designed for the Italian Coast Guard. With its spacious interior, impressive maneuverability, and sporty design, it's easy to understand why Oceanus boats are the first choice of so many sport's enthusiasts, yacht clubs and professional organizations around the globe.

- Overall Length: 17'3" / 5.18m

- Overall Beam: 8'1" / 2.46m
- Inside Length: 13'1" / 3.99
- Inside Beam: 4'2" / 1.27m
- Tube Diameter: 20" / 0.51m
- Number of Chambers: 5
- Person Capacity: 12
- Weight: 1104lb / 502kg
- Recommended HP: 90hp / 67.1kw
- Maximum HP: 115hp / 85.8kw
- Shaft Length: 20" / 50.8cm
- Water Built-In Tanks: 10gal / 38lt
- RDC Design Category: C

## SPECIFICATIONS

### Basic Information

Manufacturer:	AB Inflatables	Boat Type:	Inflatable
Model:	Oceanus 17 VST	Hull Material:	Fiberglass
Year:	2018	Hull Type:	Deep Vee
Category:	Power		

### Dimensions & Weight

Length:	17.00 ft	Draft - max:	-
LOA:	17 ft - 5.18 meter	Bridge Clearance:	-
Beam:	8 ft 1 in - 2.46 meter	Dry Weight:	1104 ft
Deadrise Aft:	-		

### Tank Capacities

Fuel Tank:	-	Holding Tank:	-
Fresh Water Tank:	10 gallons - 1 tank(s)		

### Accommodations

Total Cabins:	-	Crew Cabins:	-
Total Berths:	-	Crew Berths:	-
Total Sleeps:	-	Crew Sleeps:	-
Total Heads:	-	Crew Heads:	-
Captains Cabin:	No		

## FEATURES

### Standard Equipment

Hand Laid Fiberglass Deep "V" Hull

Stringer System Laminated into Hull  
Diamond Shape Non-skid Deck  
Integrated Marine Grade Aluminum Fuel Tank  
Plastic External Transom Plate  
Aluminum Internal Transom Plate  
Splash well, Draining  
4 Side Orca (CSM) Fabric Handles on Tubes  
2 Bow Inside Sets of 2 Orca (CSM) Fabric Handles on Tubes  
1 Port Inside Transom Set of 2 Orca (CSM) Fabric Handles on Tubes  
2 Stainless Steel Bow Handles on Tubes  
Raised Double Rub Rail  
Push Push Plastic Non-Corrosive 2 Stage Inflation Valves  
Stainless Steel Steering Wheel  
Hydraulic Steering System  
2 SS Drink Holders on Console  
Height Adjustable Steering Helm  
Closed Cell Foam Upholstery  
Fiberglass Luxury Console with Forward Seat & Cushion  
Integrated Stern Seat with Storage  
2 Deck Drain & Hull Drain with Plug  
Bow Locker/Seat  
Bow Hatch Cushion  
Console Front Access Lid  
Bow Step with Fold Down Stainless Steel Cleat & LED Running Lights  
360° LED White Light Navigation Pole  
Stainless Steel Grab Handles on Tubes  
Lateral Fold Down Stainless Steel Cleat  
3 Stainless Steel Davit Lifting Points  
Stainless Steel Bow Eye  
Stainless Steel Tow Rings & Tie Downs  
Stainless Steel Console Grab Rail  
Plexiglass Windshield  
Deluxe Style Pannel  
4 Waterproof Rocker Switches with Circuit Brakers  
Battery Box  
Battery Switch  
Fuel and Water Separator Filter  
SS Rear Grab Handles  
Automatic Bilge Pump 500 GPH  
Battery Charger  
Orca (CSM) Five Layer Coated Fabric  
Complete Tin Wiring & Heat Shrink Sealed Terminals  
3 Layers Reinforced Seams  
Fresh Water Tank  
Fresh Water Pump and Recessed Shower  
Hand Pump  
Maintenance Kit  
Owner's Manual

## **Optional Equipment**

Transom Ladder

Stainless Steel Ski Tow

Stainless Steel Light Arch

Bimini Top with Stainless Steel Tubing

Chock Set

Boat Cover

Console Cover

Lifting Harness

Teak Floor

CD/Radio System

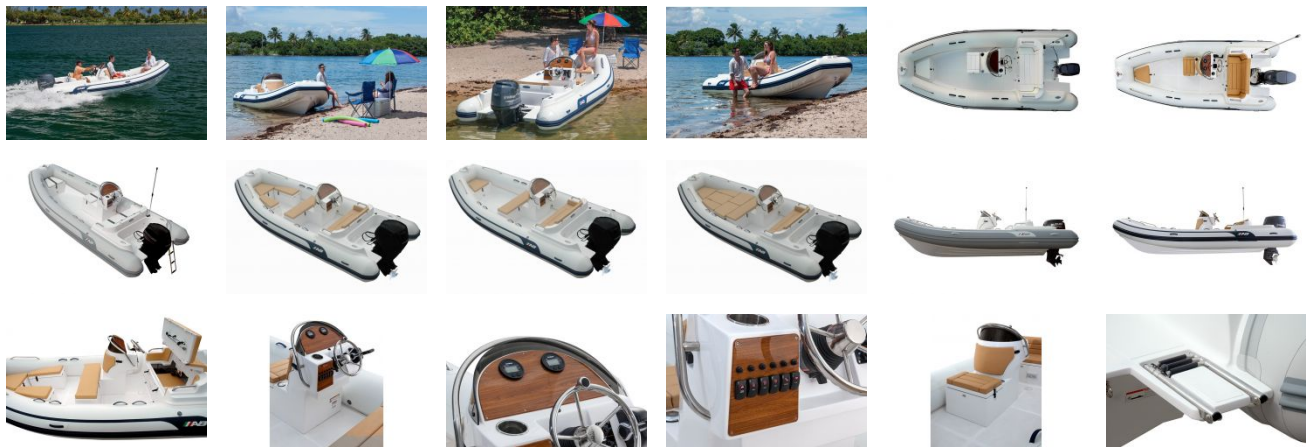
Compass

GPS

VHF Package

Rod Holders

GALLERY



**Knoxville Yacht Sales**  
1914 Ridge Oak Lane  
Knoxville, TN 37922  
Phone: 865-381-1584