



McMichael Yacht Brokers
447 East Boston Post Road
Mamaroneck, NY 10543
Phone: 877.606.0401

AB Inflatables Oceanus 17 VST

Boat Type: Inflatable



OVERVIEW

Our Oceanus line of console tenders was designed for professionals and cruisers who depend on serious performance and comfort. These boats feature AB's unique forward-hull design, making them the most spacious console tenders on the market. The extra-deep V-hull and innovative tube design allows the Oceanus to cut through the water with unsurpassed grace, virtually eliminating unwanted spray, for a truly exhilarating cruising experience.

Oceanus boats feature comfortable, upholstered seating, smartly designed consoles, and ample storage lockers that keep gear dry and safe. Boaters looking for an extremely seaworthy, highperformance, rigid inflatable will be pleased to know that several Oceanus models were originally designed for the Italian Coast Guard. With its spacious interior, impressive maneuverability, and sporty design, it's easy to understand why Oceanus boats are the first choice of so many sport's enthusiasts, yacht clubs and professional organizations around the globe.

- Overall Length: 17' / 5.18m
- Overall Beam: 8'1" / 2.46m
- Inside Length: 13'1" / 3.99
- Inside Beam: 4'2" / 1.27m
- Tube Diameter: 20" / 0.51m

- Number of Chambers: 5
- Person Capacity: 12
- Weight: 1104lb / 502kg
- Recommended HP: 90hp / 67.1kw
- Maximum HP: 115hp / 85.8kw
- Shaft Length: 20" / 50.8cm
- Water Built-In Tanks: 10gal / 38lt
- RDC Design Category: C

SPECIFICATIONS

Basic Information

Manufacturer:	AB Inflatables	Boat Type:	Inflatable
Model:	Oceanus 17 VST	Hull Material:	Fiberglass
Year:	2018	Hull Type:	Deep Vee
Category:	Power		

Dimensions & Weight

Length:	17.00 ft	Draft - max:	-
LOA:	17 ft - 5.18 meter	Bridge Clearance:	-
Beam:	8 ft 1 in - 2.46 meter	Dry Weight:	1104 ft
Deadrise Aft:	-		

Tank Capacities

Fuel Tank:	-	Holding Tank:	-
Fresh Water Tank:	10 gallons - 1 tank(s)		

Accommodations

Total Cabins:	-	Crew Cabins:	-
Total Berths:	-	Crew Berths:	-
Total Sleeps:	-	Crew Sleeps:	-
Total Heads:	-	Crew Heads:	-
Captains Cabin:	No		

FEATURES

Standard Equipment

Hand Laid Fiberglass Deep "V" Hull
 Stringer System Laminated into Hull
 Diamond Shape Non-skid Deck
 Integrated Marine Grade Aluminum Fuel Tank
 Plastic External Transom Plate

Aluminum Internal Transom Plate
Splash well, Draining
4 Side Orca (CSM) Fabric Handles on Tubes
2 Bow Inside Sets of 2 Orca (CSM) Fabric Handles on Tubes
1 Port Inside Transom Set of 2 Orca (CSM) Fabric Handles on Tubes
2 Stainless Steel Bow Handles on Tubes
Raised Double Rub Rail
Push Push Plastic Non-Corrosive 2 Stage Inflation Valves
Stainless Steel Steering Wheel
Hydraulic Steering System
2 SS Drink Holders on Console
Height Adjustable Steering Helm
Closed Cell Foam Upholstery
Fiberglass Luxury Console with Forward Seat & Cushion
Integrated Stern Seat with Storage
2 Deck Drain & Hull Drain with Plug
Bow Locker/Seat
Bow Hatch Cushion
Console Front Access Lid
Bow Step with Fold Down Stainless Steel Cleat & LED Running Lights
360° LED White Light Navigation Pole
Stainless Steel Grab Handles on Tubes
Lateral Fold Down Stainless Steel Cleat
3 Stainless Steel Davit Lifting Points
Stainless Steel Bow Eye
Stainless Steel Tow Rings & Tie Downs
Stainless Steel Console Grab Rail
Plexiglass Windshield
Deluxe Style Pannel
4 Waterproof Rocker Switches with Circuit Brakers
Battery Box
Battery Switch
Fuel and Water Separator Filter
SS Rear Grab Handles
Automatic Bilge Pump 500 GPH
Battery Charger
Orca (CSM) Five Layer Coated Fabric
Complete Tin Wiring & Heat Shrink Sealed Terminals
3 Layers Reinforced Seams
Fresh Water Tank
Fresh Water Pump and Recessed Shower
Hand Pump
Maintenance Kit
Owner's Manual

Optional Equipment

Transom Ladder
Stainless Steel Ski Tow
Stainless Steel Light Arch

Bimini Top with Stainless Steel Tubing

Chock Set

Boat Cover

Console Cover

Lifting Harness

Teak Floor

CD/Radio System

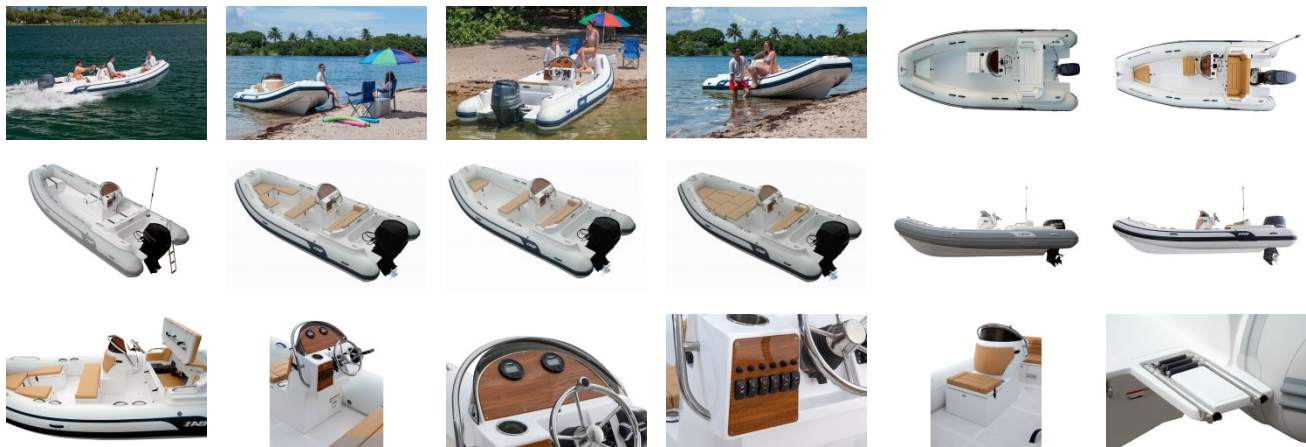
Compass

GPS

VHF Package

Rod Holders

GALLERY



McMichael Yacht Brokers
447 East Boston Post Road
Mamaroneck, NY 10543
Phone: 877.606.0401