



**McMichael Yacht Brokers**  
447 East Boston Post Road  
Mamaroneck, NY 10543  
Phone: 877.606.0401

# Amel 55

Boat Type: Racer and Cruiser



## OVERVIEW

The desire to make the AMEL spirit live in a modern and ever more demanding world led us to conceive the AMEL 55. Technology and design are perfectly combined with the renowned savoir-faire of our yard and allow our philosophy of ocean cruising to be perpetuated and this with contemporary and elegant lines. Comfort, safety, reliability and ease of handling are still today the main assets of the sailboats built in our workshops. The AMEL 55 will take you in complete confidence to the destinations of your dreams.

Jean-Jacques Lemonnier,  
Chairman & C.E.O. of Chantiers AMEL

## SPECIFICATIONS

### Basic Information

Manufacturer:	Amel	Boat Type:	Racer and Cruiser
Model:	55	Hull Material:	Fiberglass
Year:	2018	Hull Type:	
Category:	Sail		

## Dimensions & Weight

Length:	55.00 ft	Draft - max:	7 ft 3 in - 2.21 meter
LOA:	56 ft 9 in - 17.3 meter	Bridge Clearance:	69 ft 11 in - 21.31 meter
Beam:	16 ft 4 in - 4.98 meter	Dry Weight:	47399 ft
Deadrise Aft:	-		

## Tank Capacities

Fuel Tank:	238 gallons - 1 tank(s)	Holding Tank:	-
Fresh Water Tank:	211 gallons - 1 tank(s)		

## Accommodations

Total Cabins:	3	Crew Cabins:	-
Total Berths:	-	Crew Berths:	-
Total Sleeps:	-	Crew Sleeps:	-
Total Heads:	3	Crew Heads:	-
Captains Cabin:	No		

## FEATURES

### Navigation

The lines of the AMEL 55 are not only an aesthetical asset – with her slender bow, her long waterline and her large and buoyant stern the AMEL 55 enjoys sailing on the wind, but when off the wind she shows her true power, and remains extremely steady on all points of sailing. The innovations with her rigging, structure and sails come in addition to the AMEL systems of assisted handling and centralized cockpit controls.

### Cockpit

A central, deep and well protected cockpit is the symbol of AMEL yachts together with a warranty for safety and comfort. On the 55 this space has been enlarged by placing the mainmast further aft on the cabin top. The cockpit shelter and its sliding sun cover extension are rigid. The helmsman's seat is very ergonomic and makes the watch keeping hours truly pleasurable moments. The visibility of the sailing instruments and through the shelter windscreen is optimal.

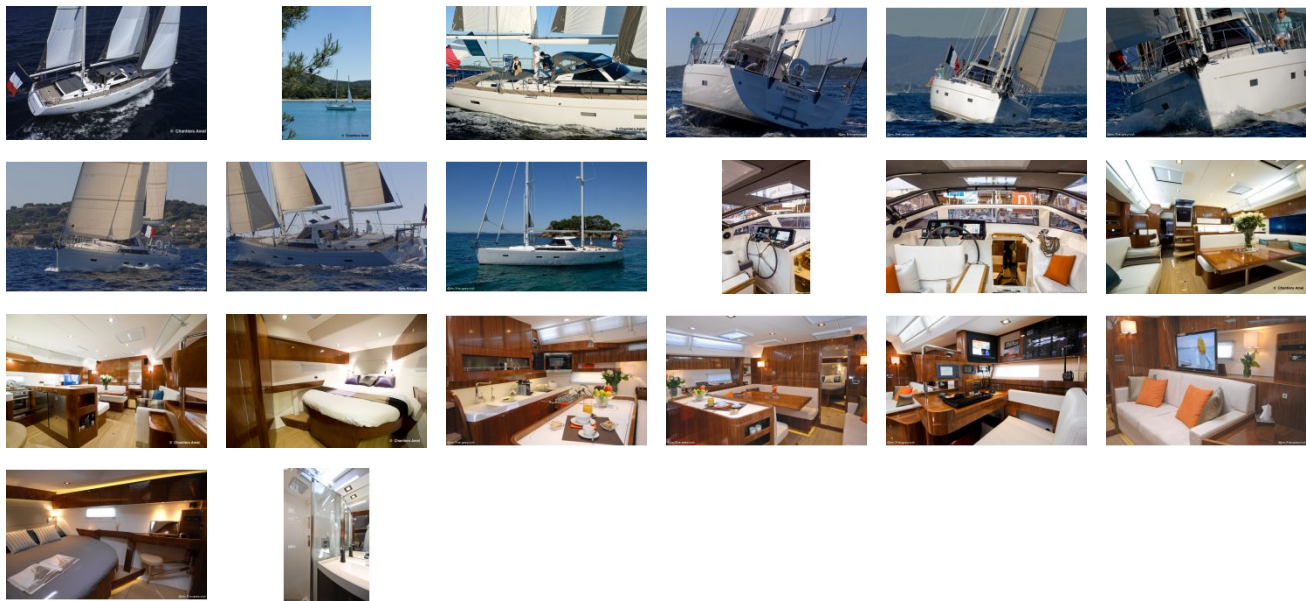
### Saloon

The five meter beam gives a roomy interior and offers many storage solutions. The saloon is thoughtfully laid out with a fully equipped galley to portside which opens on to the dining space, where the large sliding and converting table easily accommodates eight guests. To starboard is the saloon sofa complete with wine locker. The navigation station is also comfortable and functional with the electronic instruments perfectly integrated and very easy to access. The whole interior is bathed in natural light and all materials are selected with care (leather, mahogany, and tasteful trim using stainless steel) for an intimate atmosphere and perfect comfort.

## **Cabins**

Whichever layout you choose, the cabins of the AMEL 55 have an excellent soundproof level, thanks in particular to the careful insulation of the hull bottom and to the watertight bulkheads and doors. Each cabin has access to a bathroom. The atmosphere is intimate and refined, the natural light and ventilation come from the opening hatches and portholes. The low-energy lamps create a smooth and warm light at night. The storage spaces are numerous, throughout the whole boat.

GALLERY



**McMichael Yacht Brokers**  
447 East Boston Post Road  
Mamaroneck, NY 10543  
Phone: 877.606.0401