



East Coast Yacht Sales

No Address entered

Phone: 555-555-5555

Axopar 24 Hard Top

Boat Type: Center Console



OVERVIEW

SPORTY AND DISTINCTIVE IDEAL FOR A WIDE VARIETY OF ACTIVITIES

With its discreet canvas roof section, the Axopar 24 T-Top is the perfect antidote to the tiring and occasionally harmful effects of too much daytime sun.

Axopar customers love to be out on the water as much as possible and for the modest additional outlay required for the T-Top version, the assurance of having an extra layer of weather protection is well worth the extra cost.

Looked at from the front, the side or the rear, the way we have designed the unobtrusive T-Top arch and canvas roof panel means that nothing is lost from the purity and good looks of the Open boat, yet there's quite a lot more to gain.

Made from GRP and mounted on to a sturdy, white painted-metal arch, the T-Top roof assembly protects from UV rays and provides moderate protection even from an occasional rain shower.

Raised well above the top of the glass screen, there's plenty of head-room and visibility is excellent. An upgrade using North Sails canvas adds and extra touch of style to make the T-Top version a very worthy consideration.

SPECIFICATIONS

Basic Information

Manufacturer:	Axopar	Boat Type:	Center Console
Model:	24 Hard Top	Hull Material:	
Year:	2019	Hull Type:	
Category:	Power		

Dimensions & Weight

Length:	24.00 ft	Draft - max:	2 ft 4 in - 0.71 meter
LOA:	24 ft 11 in - 7.6 meter	Bridge Clearance:	-
Beam:	8 ft 4 in - 2.54 meter	Dry Weight:	3950 ft
Deadrise Aft:	-		

Tank Capacities

Fuel Tank:	-	Holding Tank:	-
Fresh Water Tank:	-		

Accommodations

Total Cabins:	-	Crew Cabins:	-
Total Berths:	-	Crew Berths:	-
Total Sleeps:	-	Crew Sleeps:	-
Total Heads:	-	Crew Heads:	-
Captains Cabin:	No		

FEATURES

STANDARD EQUIPMENT

HULL AND DECK: Unsinkability thru polyurethane foaming of hull/deck, Divinycell hull sides, Vinylester resin for the first coat of the hull in GRP material, Anti-skid finishing on deck and deck hatches, Large anchor box with drainage in bow, L-shaped sofa / stowage locker on fore deck, Heavy duty rub rail in grey, Windscreen and side windows in toughened glass and tinted light green with aluminum window profile painted in white, All hardware, pulpit and cockpit handles in hand polished 316 stainless steel, 6 x cleats aft, central and forward, Twin fender storages on aft deck, Swim platform with Esthec Platinum decking and telescopic bathing ladder, Self-draining cockpit and bow area, Integrated engine bracket for outboard engines.

HELM CONSOLE: Dual consoles with Soft Touch painted dashboard and console panels with passenger side grab rail, Illuminated push buttons on dashboard, Leather steering wheel with Axopar logo, 12V power outlet, Side consoles with wide armrests and storage with 2 x cup holders.

LAY-OUT AND SEATING: T-Top roof in GRP and Sunbrella canvas with T-Top arch painted in white, Center access layout with L-sofa on foredeck, sofa / day bed in front of helm/co-pilot consoles, separate sports seats for 3 on aft deck, Driver and co-pilot seats in diamond stitching with flip-up front / swivel function and outer armrests, "Silvertex" Taupe, Graphite, Sterling or Cobre material on all seats and sofas.

ELECTRICS: LED T-Top roof lights, Main control panel with single battery switch and fuses for direct supply and a 12V outlet, Fuse panel with automatic fuses and 12V outlet, Light mast with anchor light in white, Navigation lights, 2 x Electric bilge pumps, Signal horn.

OTHER: Aluminium fuel tank 230l, 2 kg fire extinguisher, Manual bilge pump, Harbour covers for helm w. drivers/co-pilot seats and aft seats.

OPTIONAL PACKAGES

PREMIUM PACKAGE, SILVERTEX

- Table in Esthec Platinum on foredeck
- Foredeck seat cushions and back rest
- Sun bed on foredeck
- Mooring package: incl. 4 x fenders, 4 x fender covers with axopar logo, 4 x fender ropes, 4 x mooring ropes 14mm/10m, 7,5kg Anchor, 30m Anchor rope

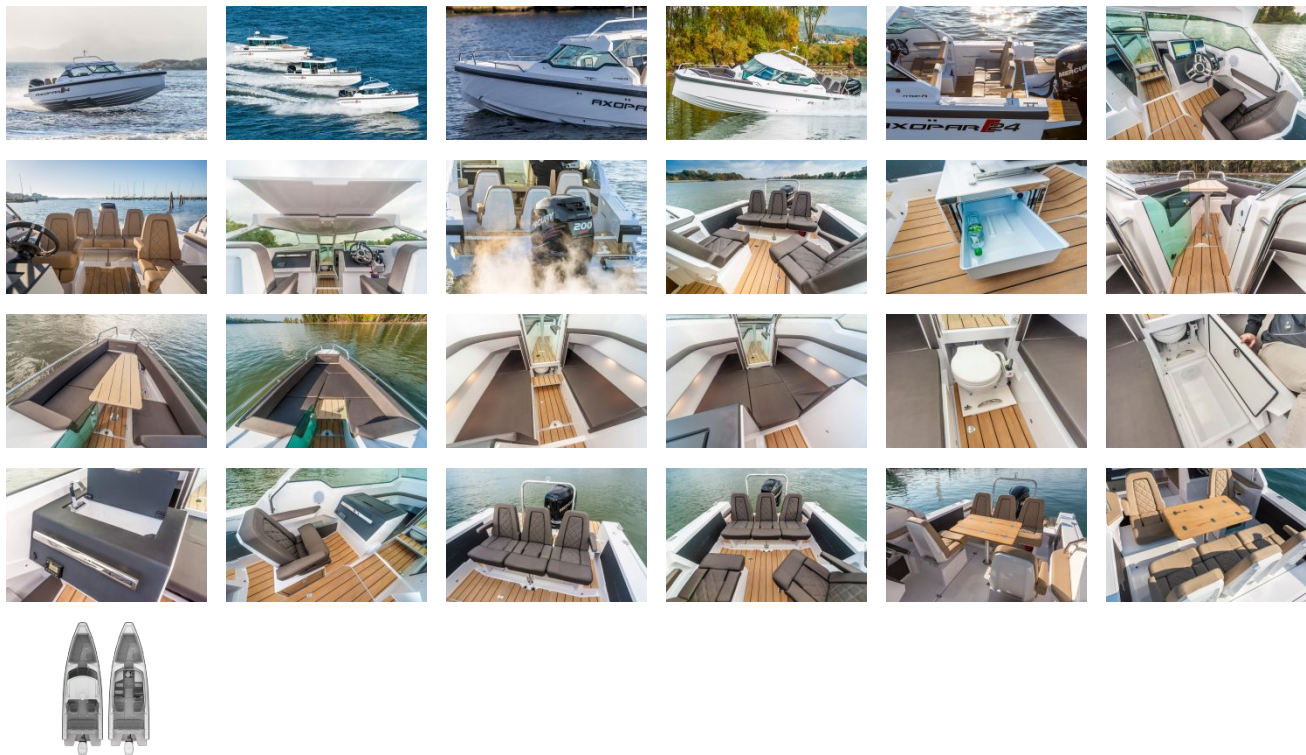
TOILET PACKAGE, MANUAL FLUSH, 40L SEPTIC, MACERATOR, SEA + DECK CONNECTION

- Manual flush, 30l septic, Macerator, Sea+deck connection

COMPLETE ESTHEC PACKAGE - PLATINUM/WHITE

- Esthec platinum complete flooring, including cockpit and foredeck seating hatches in platinum colour with white caulking

GALLERY



East Coast Yacht Sales
No Address entered
Phone: 555-555-5555