



East Coast Yacht Sales
No Address entered
Phone: 555-555-5555

Axopar 37 Sun-Top

Boat Type: Center Console



OVERVIEW

WITHOUT COMPROMISING VERSATILITY FOR DAY-LONG HOSPITALITY

For day-long boating hospitality and water-sports fun, mix the perfect boating cocktail by adding friends & family with the full length shaded protection of the Axopar 37 Sun-Top.

With an extended length roof when compared to the T-Top, the Sun-Top version offers the most shade and weather protection possible, by way of a manually controlled, full-length Sunbrella canvas section, which can be upgraded to full electric control as one of our options.

Without compromising in any way on the space and versatility of the walkaround side and aft-deck area, the Sun-Top large bimini is fixed on sturdy mounts and successfully screens all seven seating positions and the central dining table in one.

While the Sun Top is every bit a long-distance, comfortable passage maker, the clever design nonetheless makes an ideal proposition for those who love 'al-fresco' dining whenever and wherever they can.

The three front row seats can swivel 180 degrees to make this a very sociable area around the table and there's always plenty of choice from our options list to enhance and upgrade your boat, including our fully plumbed Wet Bar option, or 20 litre capacity draw type fridge, which holds enough quantity of food & drink for all-day hospitality.

Before or after lunch, sit back and relax on the foredeck sunbed area and congratulate yourself on choosing such a cool and versatile boating brand.

SPECIFICATIONS

Basic Information

Manufacturer:	Axopar	Boat Type:	Center Console
Model:	37 Sun-Top	Hull Material:	
Year:	2019	Hull Type:	
Category:	Power		

Dimensions & Weight

Length:	37.00 ft	Draft - max:	2 ft 9 in - 0.84 meter
LOA:	36 ft 9 in - 11.2 meter	Bridge Clearance:	-
Beam:	10 ft 10 in - 3.3 meter	Dry Weight:	7910 ft
Deadrise Aft:	-		

Tank Capacities

Fuel Tank:	-	Holding Tank:	-
Fresh Water Tank:	-		

Accommodations

Total Cabins:	-	Crew Cabins:	-
Total Berths:	-	Crew Berths:	-
Total Sleeps:	-	Crew Sleeps:	-
Total Heads:	-	Crew Heads:	-
Captains Cabin:	No		

FEATURES

STANDARD EQUIPMENT

HULL AND DECK: Hand laminated hull in Vinylester resin for the first coat of the hull in GRP material, Anti-skid finishing on deck and hatches, Spacious anchor box with drainage in bow, Large stowage locker on foredeck, Heavy duty rub rail in grey, Windscreen and side windows in toughened glass with light green tint and aluminium window profiles painted in white, All hardware, pulpit and cockpit handles in hand polished 316 stainless steel, 8 x cleats aft, central and forward, Self-draining deck with large diameter scuppers, Flag pole, Twin large fender storages on aft deck with cooler box function on Port side, Integrated bathing platforms in Esthec Platinum with white caulking and telescopic bathing ladder, Integrated engine bracket for outboard engines.

LAY-OUT AND SEATING: Walk-around deck and open aft deck area with storage under deck, optional wet bar or day cruiser cabin on aft deck, Large seating area with four separate seats and fixed table in aft cockpit with cargo compartment under deck, three front seats with flip-up front and armrests with swivel function, Centre helm driving position with lowered floor level, Sun-Top roof and arches in white colour with large sliding canvas mid section, Optional sundeck on fore deck, "Silververtex" Beige, Meteor or Mandarin material on driver/co-pilot seats and aft seats, Harbour cover for helm and front seats, separate cover for aft seats.

FRONT CABIN: Front cabin with lounge seating, large queen size bed and fixed cupboard, Toilet with electric flush with septic tank 70l and deck/hull outlets, Privacy curtains for toilet compartment, Loading hatch from deck to front cabin, Large roof skylight and front window, Wide port lights with flush hatches.

HELM CONSOLE: Integrated iPad slot in dashboard, Soft touch painted dashboard, helm and console panels, Illuminated pushbuttons, Hydraulic steering with tilt function, Leather steering wheel with Axopar logo, 2 x cup holders, Co-pilot grab rail, 12V power outlet, Compass, Access hatch to front cabin in soft touch black paint with metallic silver painted sliding door.

ELECTRICS: LED Sun-Top roof lights and spot lights in front cabin, Main control panel with three battery switches and automatic fuses for direct supply and 12V outlet, Fuse panel with automatic fuses and 12V outlet in front cabin, Light mast with anchor light, Navigation lights, Heavy duty windscreen wiper, Electric bilge pumps x 2, Signal horn.

OTHER: Fixed aluminium fuel tank 730l, Bow thruster preparation in hull, 2 kg Fire extinguisher, Manual bilge pump, Harbour cover for helm and front seats, separate cover for aft seats.

OPTIONAL PACKAGES

PREMIUM PACKAGE, SILVERTEX

- Sun deck cushions with twin stitching on foredeck
- Harbour cover for sun deck
- LED deck lights x 14
- "Comfort" indirect lighting in front cabin
- Mooring package: incl. 6 x fenders, 6 x fender covers with Axopar logo, 6 x fender ropes, 4 x mooring ropes 16mm/10m
- 12,5kg anchor + 30m anchor rope

PREMIUM PACKAGE, NIROXX

DAY CRUISER AFT CABIN PACKG.(NOT AV. WITH WET BAR)

- Spacious aft cabin accommodating additional 2 persons with twin flush roof hatches, side windows and indirect lighting.

WET BAR PACKAGE (INCL. FW.)(NOT AV. WITH DAY CRUISER)

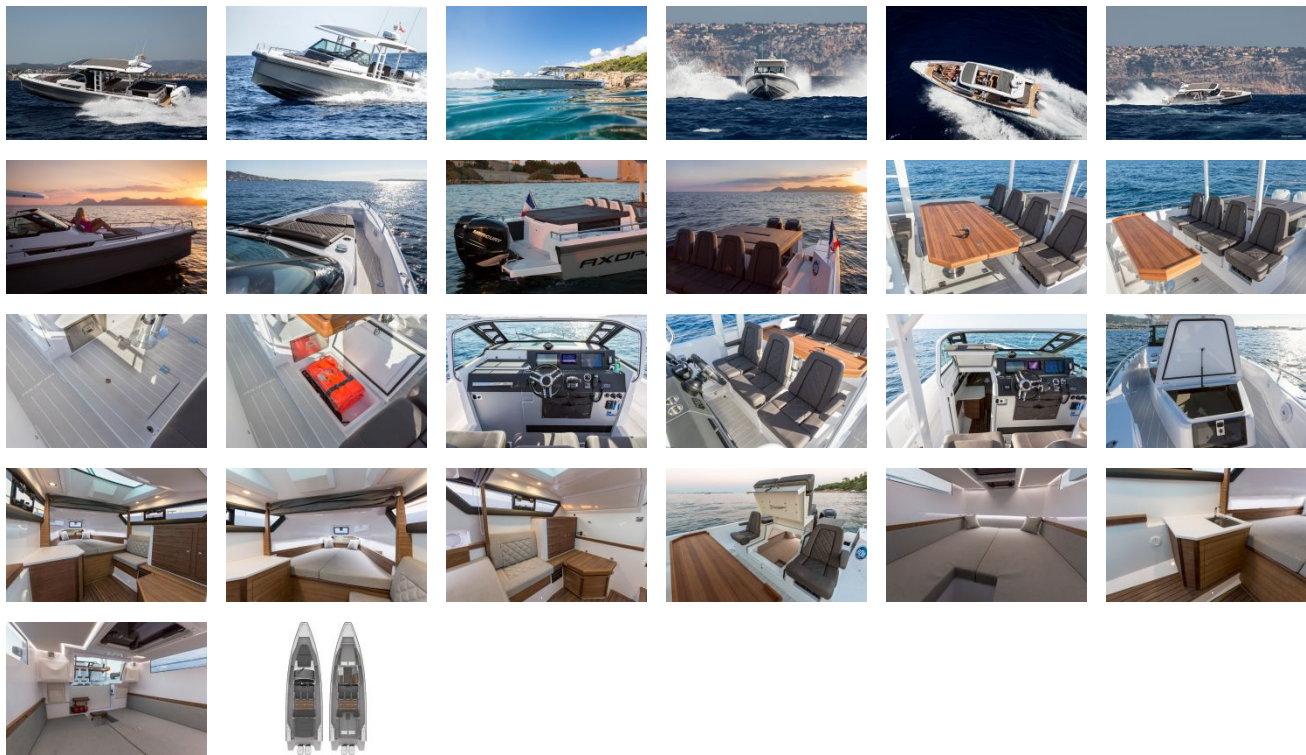
- Wet bar module with drawers on aft deck • Refrigerator Dometic CDX 50 • Sink and faucet • Freshwater 100l tank, incl. cabinet w. sink, front cabin

VERSION R

- Special edition with hull and roof in Cool Grey • Details and optional rails painted black • Cockpit seats and aft sofa seats in exclusive Niroxx fabric

COMPLETE ESTHEC PACKAGE - PLATINUM/WHITE

GALLERY



East Coast Yacht Sales
No Address entered
Phone: 555-555-5555