



**DimillosYacht Sales**  
1 Long Wharf, Portland, ME 04101  
Phone: 207-773-7632

---

# Back Cove 30

Boat Type: Cruiser



## OVERVIEW

### **The Back Cove 30: Perfect for Day Boating or Overnight Cruising**

The Downeast boat is tightly associated with Maine's proud boat building history, and the Back Cove 30 is a grand example of everything that takes the style beyond a simple boat and makes it a work of art. Built in Maine, her design is reminiscent of the working boats of her heritage and contains many of the same practical and elegant details. She has comfortable side decks and convenient handholds for security and efficient movement, and her traditional spoon bow and gently sloped transom result in a style that will turn heads in any harbor.

The Back Cove 30 has a resin infused, deep-vee hull with propeller recess and standard trim tabs which result in a quiet and comfortable ride. With her standard 320 horsepower six-cylinder diesel, she will cruise at 20 knots and top out at 25. With the added power of the optional engine, she will cruise at 25 knots. Precision maneuverability provided by a standard bow thruster provides confidence at the dock. Below decks, her comfortable V-berth and head unit with pull-out shower faucet make overnighting on board a dream.

## SPECIFICATIONS

### Basic Information

Manufacturer:	Back Cove	Boat Type:	Cruiser
Model:	30	Hull Material:	Fiberglass
Year:	2019	Hull Type:	
Category:	Power		

### Dimensions & Weight

Length:	30.00 ft	Draft - max:	2 ft 8 in - 0.81 meter
LOA:	34 ft 2 in - 10.42 meter	Bridge Clearance:	11 ft 6 in - 3.51 meter
Beam:	11 ft 3 in - 3.43 meter	Dry Weight:	12300 ft
Deadrise Aft:	-		

### Tank Capacities

Fuel Tank:	160 gallons - 1 tank(s)	Holding Tank:	30 gallons - 1 tank(s)
Fresh Water Tank:	58 gallons - 1 tank(s)		

### Accommodations

Total Cabins:	-	Crew Cabins:	-
Total Berths:	-	Crew Berths:	-
Total Sleeps:	-	Crew Sleeps:	-
Total Heads:	-	Crew Heads:	-
Captains Cabin:	No		

## FEATURES

### Hull

Back Cove white iso-npg gelcoat  
Vinylester backup resin  
VIP Resin Infused hull w/ PVC foam core sandwich  
VIP Resin Infused foam core stringer system  
Advanced prop pocket hull design  
Awlgrip boot top  
Molded cove stripe depression w/ "gold leaf" style stripe

### Deck

Back Cove white iso-npg gelcoat w/ graystone anti-skid on walking surfaces  
VIP Resin infused balsa core sandwich structure  
Mooring cleats forward, aft and spring line cleats. Aft cleats are pull-up style  
SS anchor roller  
Anchor locker w/ ground tackle storage  
Running lights (LED)  
Teak accent stripe on cabin side  
Custom 1-1/4" 316L stainless steel perimeter rail  
SS handrails on hard top, port and starboard

Compressed air horn on hardtop (mast opt.)  
(4) opening Port lights w/ insect screens  
Port & starboard molded steps leading to side & fore deck  
Molded quarter seating in cockpit w/ storage, port and starboard  
Transom door on centerline  
Swim platform w/ SS under-mount swim ladder  
Hot and cold cockpit shower  
Self draining cockpit  
Pop-up fender cleats on cockpit coamings

### **Mechanical Systems**

Yanmar 8L V320 mhp engine and Kanzaki marine gear  
1.5" Aquamet shaft (1.75" w/ optional engines)  
4 Blade NiBrAl propeller  
PSS Dripless shaft log  
Binnacle mount single lever engine control  
Engine instruments w/ alarms and hour meter  
Internal sea strainer  
160 gallon fuel tank w/ 2" fill  
Racor Fuel Filter  
6" Exhaust w/ two stage horizontal muffler  
Electric actuated trim tabs port and starboard w/ helm controller  
SeaStar hydraulic steering w/ tilting helm pump  
SidePower bow thruster w/ joy stick control (SE40i)  
Hot and Cold pressurized water system  
8 gallon hot water heater w/ heat exchanger  
Marelon sea valves on underwater thru hulls  
Automatic Fireboy extinguisher system w/ manual back-up

### **Electrical Systems**

AC and DC control panels with polarity indicator  
DC system battery management switching  
DC breakers for electronics  
12V outlet at helm and in cabin  
Emergency cross over switch / ACR  
120V AC 30 amp shore power w/ 50 foot cord set  
AC shore power system ELCI protected  
Galvanic isolator  
GFI protected 120V circuits  
Battery Charger  
(2) 31 AGM house battery  
(2) Group 31 AGM engine start battery  
(2) 12VDC bilge pumps  
Bonding system w/ zinc transom anode  
Engine room lighting (2) w/ bezel switches  
Cockpit courtesy lights switched at transom door and helm  
Overhead LED cabin lights, individually bezel switched  
Reading lights in berth area  
Overhead bi-color LED helm deck light w/ switch

## **Head / Sanitary Systems**

Built-in vanity w/ sink and storage  
Stainless steel opening port w/ insect screen and shade  
Cherry framed mirror  
Solid surface countertop  
Pull out single lever faucet / shower  
Shower sump and pump system w/ overboard discharge  
Standard size fresh water electric MSD with holding tank  
Holding tank monitor level  
Macerator for holding tank overboard discharge as permitted  
Holding tank pump out fitting on deck  
Sealed overhead lighting w/ bezel switch  
Powered exhaust fan (12V)  
Fresh water tank level gauge

## **Helm Deck**

Clear anodized aluminum windows w/ opening windows port, starboard and center.  
(3) windshield wipers w/ fresh water washer system  
Lewmar sliding hatch w/ OCEANair Skyscreen  
Compass, illuminated  
Arrigoni helm seat (Choose white or tan vinyl)  
White translucent acrylic companionway slider w/ lockable latch  
Raised L-settee seating aft of helmsman  
Mates bench seat to port, removes to face aft  
Raised settee to port w/ backrest converts to berth

## **Galley**

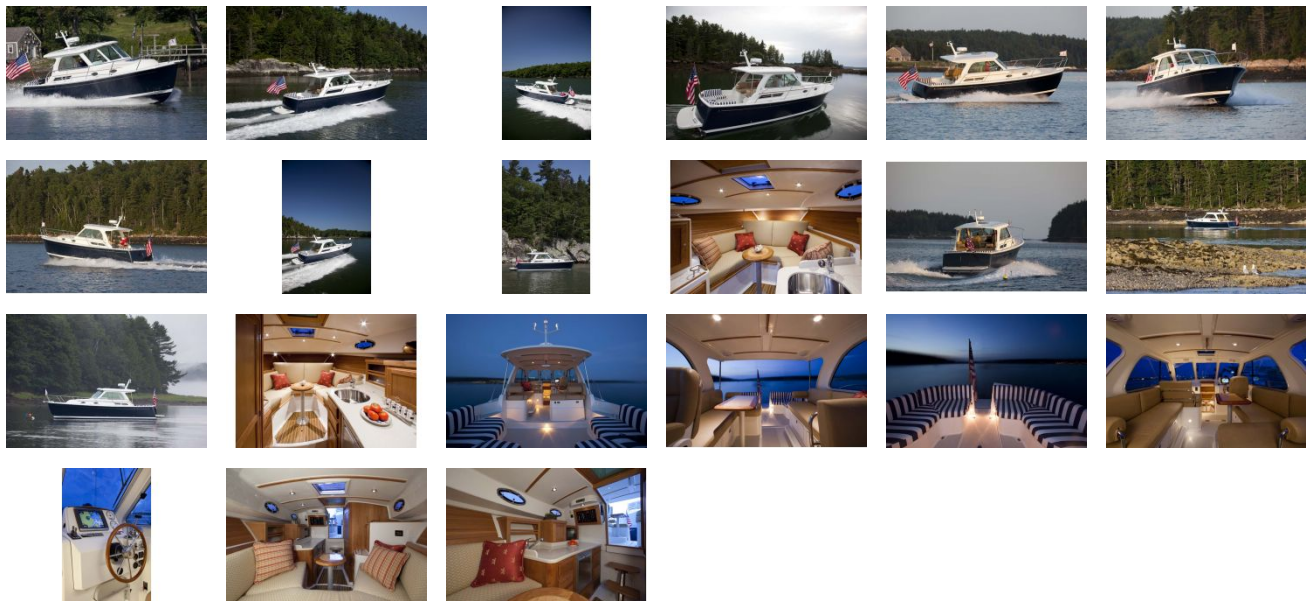
Alcohol / 120V single burner stove w/ cover  
SS front loading AC/DC fridge  
Galley sink with single lever faucet & drop in cover  
Solid surface countertop  
Countertop cabinet storage  
Built-in microwave  
Drawer and doors storage below counter

## **Cabin**

Varnished Cherry interior joinery on molded composite hull liner  
Lewmar hatch w/ OCEANair Skyscreen  
Custom hi-lo table w/ Birdseye Maple inlay  
V-berth w/ filler and cushion, converts to dinette  
Shelves outboard of berth  
Cedar lined hanging locker  
Cherry hull ceilings  
"Teak and Holly" high pressure laminate cabin sole w/ surface texture  
Interior / Helm Deck speakers  
Storage under dinette and forward berth  
Charging station (AC/DC/USB)  
Sirius XM ready Fusion Stereo system w/bluetooth connectivity  
Storage under dinette and forward berth



GALLERY



**DimillosYacht Sales**  
1 Long Wharf, Portland, ME 04101  
Phone: 207-773-7632