



E Marine Motor Yachts

Address

Phone: 555

Back Cove 34

Boat Type: Cruiser



OVERVIEW

The Beautiful, Sensible, and Efficient Back Cove 34

Above decks and below the Back Cove 34 is ideal for a day with guests or an overnight couples cruise. Below deck is found a large island berth and a convertible L-settee which can be isolated from the cabin with a curtain. A large head to starboard with separate stall shower adds practicality and comfort. The result is a comfortable oasis for owners and their possible guests.

The helm deck is airy and bright, with a full galley stretching out aft of the helm seat, opposite a dinette that can comfortably seat four adults. Forward of the dinette, a double mate's seat is a comfortable perch for the navigator. In her cockpit, a large, L-shaped bench seat and a fold-away aft facing seat provide comfortable lounging spots while underway or when anchored in a peaceful cove. Engine access is extraordinary, as the helm deck, including the port side dinette, lifts hydraulically to expose the yacht's mechanical systems below.

SPECIFICATIONS

Basic Information

Manufacturer:	Back Cove	Boat Type:	Cruiser
Model:	34	Hull Material:	Fiberglass
Year:	2019	Hull Type:	
Category:	Power		

Dimensions & Weight

Length:	34.00 ft	Draft - max:	3 ft 1 in - 0.94 meter
LOA:	38 ft 5 in - 11.71 meter	Bridge Clearance:	12 ft 2 in - 3.71 meter
Beam:	12 ft - 3.66 meter	Dry Weight:	16000 ft
Deadrise Aft:	-		

Tank Capacities

Fuel Tank:	185 gallons - 1 tank(s)	Holding Tank:	40 gallons - 1 tank(s)
Fresh Water Tank:	80 gallons - 1 tank(s)		

Accommodations

Total Cabins:	-	Crew Cabins:	-
Total Berths:	-	Crew Berths:	-
Total Sleeps:	-	Crew Sleeps:	-
Total Heads:	-	Crew Heads:	-
Captains Cabin:	No		

FEATURES

Hull

Back Cove white iso-npg gelcoat
Vinylester backup resin
VIP Resin Infused hull w/ PVC foam core sandwich
VIP Resin Infused foam core stringer system
Advanced prop pocket hull design
A wlgrip boot top
Molded cove stripe depression w/ "gold leaf" style stripe

Deck

Back Cove white iso-npg gelcoat w/ graystone anti-skid on walking surfaces
VIP Resin infused balsa core sandwich structure
Mooring cleats forward, aft and spring line cleats. Aft cleats are pull-up style
Molded Composite bow sprit w/ stainless steel anchor roller
Anchor locker w/ ground tackle storage
Running lights (LED)
Teak accent stripe on cabin side
Custom 1-1/4" 316L stainless steel perimeter rail SS handrails on hard top, port and starboard
Compressed air horn on hardtop (mast opt.)

(6) opening Port lights w/ insect screens

Port & starboard molded steps leading to side & fore deck Molded cockpit seating w/ storage, forward facing and aft

Transom Door to starboard

Swim platform w/ SS under mount swim ladder

Hot and cold cockpit shower

Self draining cockpit

Mechanical Systems

Cummins QSB 380 mhp electronic engine and marine gear

Cummins Smartcraft display

2" Aquamet shaft

4 Blade NiBrAl propeller

PSS Dripless shaft log

Binnacle mount electronic single lever engine control

Internal sea strainer

185 gallon fuel tank w/ 2" fill

Racor Fuel Filter

6" Exhaust w/ two stage horizontal muffler

Electric actuated trim tabs port and starboard w/ helm controller

SeaStar hydraulic steering w/ tilt helm pump

Below deck air conditioning w/reverse cycle heat

Sidepower bow thruster w/ joy stick control (SE60i)

Hot and Cold pressurized water

11 gallon hot water heater w/ heat exchanger

Marelon sea valves on underwater thru hulls

Automatic Fireboy extinguisher system w/ manual back-up

Electrical Systems

AC and DC control panels with polarity indicator

DC system battery management switching

DC breakers for electronics

Emergency cross over switch / ACR

110V AC 30 amp shorepower w/ 50 foot cord set

AC shorepower system ELCI protected

Galvanic isolator

GFI protected 110V circuits

Battery Charger

(2) 4D GEL house battery

(2) Group 31 engine start battery

(2) 12VDC automatic bilge pumps

Bonding system w/ zinc transom anode

Engine room lighting (2) w/ bezel switch

Cockpit courtesy lights switched at transom door and helm

Overhead LED cabin lights, individually bezel switched

Reading lights in salon / berth area

Overhead dual color LED helm deck light w/ switch

12V outlet at helm and in cabin

Head / Sanitary Systems

Head to port w/ separate shower stall to starboard

Molded seat in shower stall w/ storage beneath
Built-in vanity w/ sink and storage in head
Borrowed light in head with privacy glass
Stainless steel opening ports w/ insect screen and shade
Cherry framed mirror in head
Full length mirror on head door
Solid surface countertop
Single lever faucet
Shower drain sump pump system
Standard size fresh water electric MSD w/ holding tank
Macerator for holding tank overboard discharge as permitted
Holding tank pump-out fitting on deck
Sealed overhead lighting
Powered exhaust fan (12V) in head and shower
Waste and fresh water level gauge

Helm Deck

Clear anodized aluminum windows w/ opening windows port, starboard and center
(3) windshield wipers w/ fresh water washer system
Lewmar sliding hatches w/ OCEANair Skyscreens
Compass, illuminated
Stazo wood grain steering wheel
Stidd 500N series helm seat
Smoked acrylic companionway slider w/ lockable latch
Engine hatch opens by electric/hydraulic linear actuator
Large engine room hatch incorporates dinette & mate's bench
Dinette seating w/ hi-low Back Cove high gloss table w/ decorative inlay
Dinette and mate convert to double berth
Storage beneath dinette benches
Charging station (AC/DC/USB)

Galley

Electric two burner cook-top with cover
(2) SS Drawer style AC/DC fridges w/ freezer compartment
Large SS Galley sink w/ single lever faucet & drop in cover
Solid surface countertop
Built-in convection microwave
Drawer and doors storage below counter

Cabin

Varnished Cherry interior on molded composite hull liner
Lewmar hatches w/ screens
Island double berth w/ drawers and storage below
Shelves above berth
Cedar lined hanging locker to starboard
Drawer / Shelf locker to port
Cherry hull ceilings
L-settee converts to a second berth
Storage above and below L-settee
Privacy curtain to enclose berth

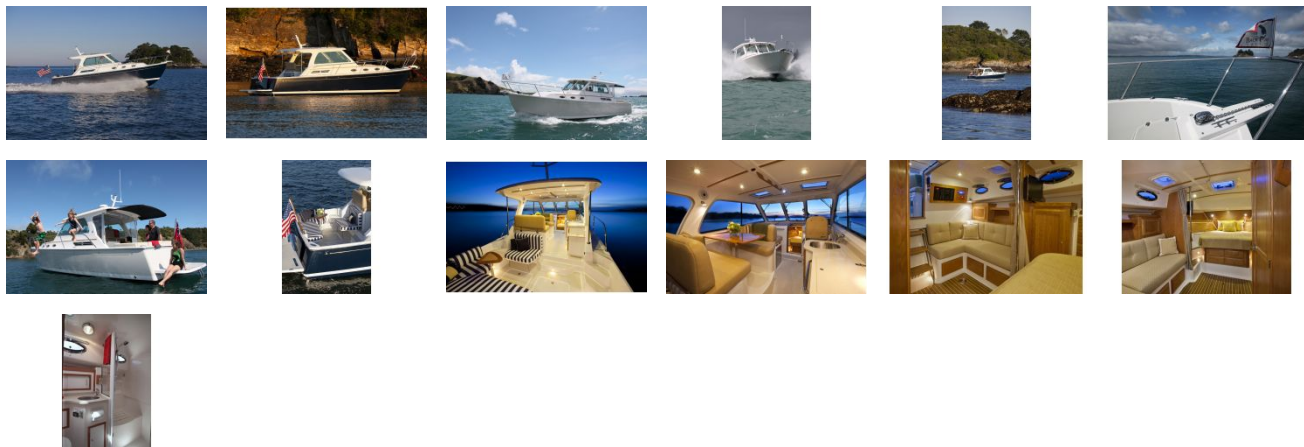
"Teak and Holly" high pressure laminate sole w/ surface texture

Overhead lighting

Sirius XM ready infusion stereo system w/bluetooth connectivity

Interior / Helm Deck speakers

GALLERY



E Marine Motor Yachts
Address
Phone: 555