



**McMichael Yacht Brokers**  
447 East Boston Post Road  
Mamaroneck, NY 10543  
Phone: 877.606.0401

# MJM Yachts 43z

Boat Type: Cruiser



## OVERVIEW

### **43z - NEW Outboard Epoxy Composite Boat**

Thanks to input/insistence from MJM owners, experience in the Carolina Low Country and SW Florida markets... MJM is taking its 2nd major step into the large, growing outboard cruising market. There have been impressive technological and control advances with new outboards, particularly with Mercury. In addition, lower maintenance costs, less demanding daily checks, greater performance, reduced risk of damage when grounding or snaring pots, and quiet running of these engines offer attractive consumer benefits.

It was just a matter of time before MJM received inquiries about the availability of outboards on its larger models. One interesting consumer perception has been: the longevity and quality of an inboard boat is defined by that of the engine... while the life and quality of an outboard boat is not, because it's no big deal to clamp on a new engine. And this is what has led to the 43z... a more likely successor to the 35z than a larger inboard diesel. Length of deck on top of the extended hull (rather than a swim platform) supporting the propulsion unit is 42' 7", rounded off to 43 feet. LOA with engines down and anchor roller is over 46 feet.

## SPECIFICATIONS

### Basic Information

Manufacturer:	MJM Yachts	Boat Type:	Cruiser
Model:	43z	Hull Material:	Composite
Year:	2019	Hull Type:	Modified Vee
Category:	Power		

### Dimensions & Weight

Length:	43.00 ft	Draft - max:	3 ft 1 in - 0.94 meter
LOA:	44 ft - 13.41 meter	Bridge Clearance:	10 ft - 3.05 meter
Beam:	12 ft - 3.66 meter	Dry Weight:	18960 ft
Deadrise Aft:	19.00 °		

### Tank Capacities

Fuel Tank:	540 gallons - 2 tank(s)	Holding Tank:	-
Fresh Water Tank:	100 gallons - 1 tank(s)		

### Accommodations

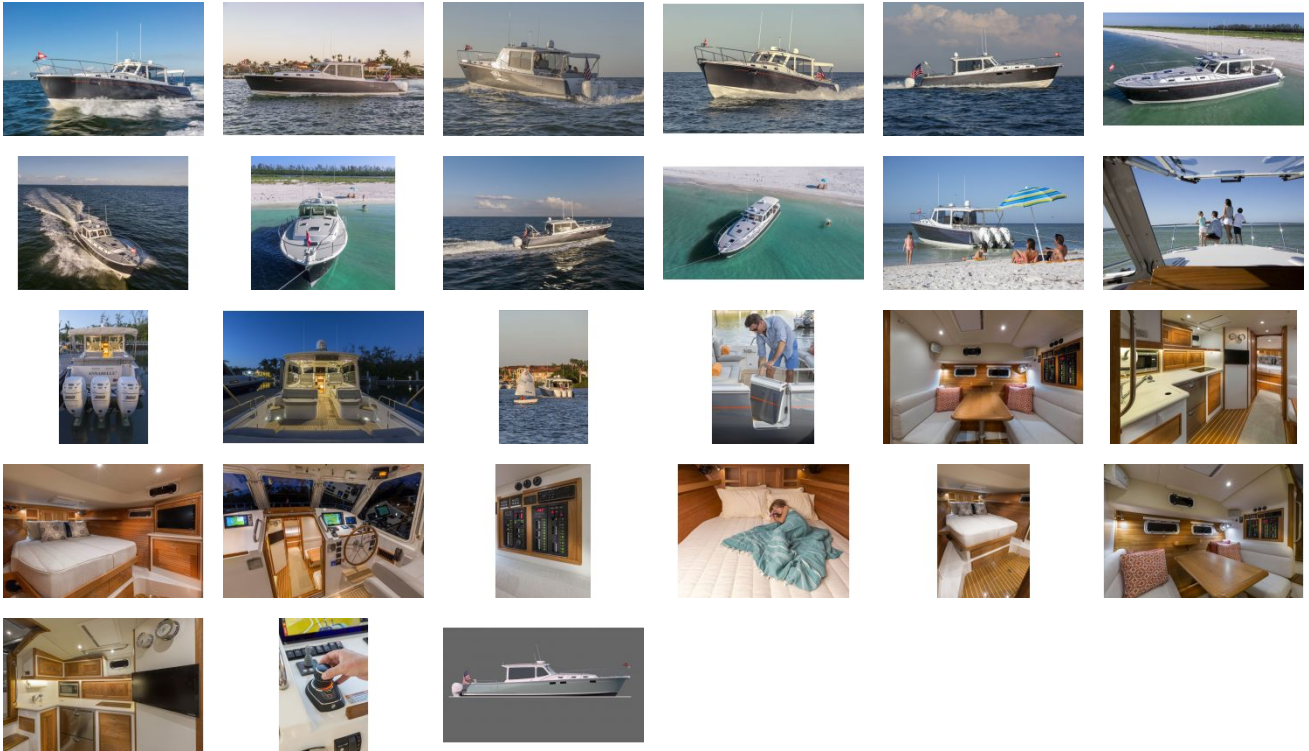
Total Cabins:	1	Crew Cabins:	-
Total Berths:	-	Crew Berths:	-
Total Sleeps:	-	Crew Sleeps:	-
Total Heads:	1	Crew Heads:	-
Captains Cabin:	No		

## FEATURES

### Key Features

- Joystick Docking w/Skyhook Station Keeping
- Roll-Up Strataglass or Sliding Glass Sides
- Triple Mercury 350 HP Verado Power
- Flush Deck with Side Boarding Doors
- All-weather Comfort + HVAC Option
- Certified ISO CE Category A OCEAN
- Seakeeper 5 Gyrostabilizer Option
- Full Length Yacht Bimini Option
- Fully-Opening Windshields
- Bowrail and Spotlight

# GALLERY



**McMichael Yacht Brokers**  
447 East Boston Post Road  
Mamaroneck, NY 10543  
Phone: 877.606.0401