



**Jefferson Beach Yacht Sales**  
24400 Jefferson Avenue,  
St. Clair Shores, MI 48080  
Phone: 866-490-5297

---

# Princess V50 Open

Boat Type: Cruiser



## OVERVIEW

The all-new V50 features our latest dynamic exterior design, voluminous space and the exceptional performance synonymous with our V Class range. Flexibility is offered in abundance starting with the option of an enclosed or open main deck configuration with L-shaped seating or a sunpad aft leading to the spacious saloon and helm seating. With so much choice on hand and 32 knots at your fingertips, you're assured a euphoric experience.

Innovative flexibility continues to the well-appointed lower deck saloon which can be used as an entertaining space or optionally converted to a double berth. There is the added option of specifying this area with a third cabin. The full beam master stateroom is an inviting sanctuary whilst the forward cabin enjoys the option of scissor berths.

## SPECIFICATIONS

### Basic Information

Manufacturer:	Princess	Boat Type:	Cruiser
Model:	V50 Open	Hull Material:	
Hull Type:		Category:	Power

### Dimensions & Weight

Length:	50.00 ft	Draft - max:	3 ft 9 in - 1.14 meter
LOA:	51 ft 10 in - 15.8 meter	Bridge Clearance:	-
Beam:	13 ft 6 in - 4.11 meter	Dry Weight:	35710 ft
Deadrise Aft:	-		

### Tank Capacities

Fuel Tank:	350 gallons - 1 tank(s)	Holding Tank:	-
Fresh Water Tank:	96 gallons - 1 tank(s)		

### Accommodations

Total Cabins:	-	Crew Cabins:	-
Total Berths:	-	Crew Berths:	-
Total Sleeps:	-	Crew Sleeps:	-
Total Heads:	-	Crew Heads:	-
Captains Cabin:	No		

## FEATURES

### Deck Fittings

- Teak-laid transom platform, cockpit deck and steps to side decks
- Reversible electric anchor winch with foredeck and helm position controls
- Self-stowing 20kg/44lbs Delta anchor with 40m of chain
- Stainless steel cleats, fairleads and handrails
- Remote control searchlight

### Cockpit

- Seating with folding teak table
- Lockable gas strut assisted hatch to engine room
- Twin transom gates leading to bathing platform with foldaway swimming ladder and hot and cold shower (with optional electro-hydraulic raise/lower mechanism and dinghy chock system)
- Liferaft storage locker
- 220/240v shore support inlet
- Locker with remote fuel cocks
- Cockpit cover
- Transom hatch to stern lazarette
- Storage locker for 2 gas bottles

## **Helm Position**

- Twin helm seat with bolster
- Electric opening helmsman's window
- Full engine instrumentation including fuel gauges, joystick control and rudder position indicator
- Navigation system including VHF/RT, speed and distance log, echo sounder with alarm and high speed magnetic compass
- Controls for windscreen wipers, bilge pump anchor winch and trim tabs (with indicator)
- Chart table
- Remote control searchlight

## **Deck Saloon**

- Triple opening stainless steel framed sliding doors to cockpit
- U-shaped sofa and dining table
- Sideboard unit with glass and bottle storage and refrigerator
- Electric opening roof
- Stereo radio/MP3 with saloon and cockpit speakers
- Timber-laid floor

## **Galley**

- 3-zone gas hob with flame-failure device (3-zone ceramic hob standard on Open)
- Remote solenoid switch for gas system
- Combination microwave/convection oven with grill
- Stainless steel sink with monobloc mixer tap
- Full height fridge/freezer
- Waste bin
- Storage cupboards, drawers and lockers

## **Accommodation**

- All cabins and bathrooms feature opening portholes
- All cabins feature 220/240v power points
- All mattresses pocket sprung
- All bathrooms feature full shower stalls, electric freshwater toilets, extractor fan and 240v shaver points

## **Owner's Stateroom**

- Large double bed with drawers below
- Wardrobe with shelves
- Sofa
- Storage lockers and drawers
- Overhead and individual berth lights
- En suite bathroom

## **Forward Guest Cabin**

- Large double bed with drawers below (option of scissor berths)
- Wardrobe with shelves
- Storage lockers
- Deck hatch with integrated skylight and blind

- Overhead and individual berth lights
- En suite bathroom with optional day access

### **Interior Finish**

- Furniture in Rovere Oak with satin or high gloss finish. Walnut or Alba Oak available as an option
- Solid surface worktops and tiled floors in all guest bathrooms
- Solid surface worktops in galley
- Choice of high quality carpet and upholstery fabric from extensive range
- Blinds or sunscreens to all windows and portholes

### **Power and Drive Systems**

- Twin Volvo IPS-600 with joystick control
- Volvo active corrosion protection system
- Power-assisted electro-hydraulic steering system with hydraulic back-up
- Electronic engine and gear shift controls
- Engine room extractor fan with electronic time delay

### **Electrical System**

24 Volt:

- 4 x heavy duty batteries for engine starting
- 4 x heavy duty auxiliary batteries
- 40 amp battery charger charges both banks of batteries via an automatic switch charging system
- Remote battery master switches with control switch at main panel
- LED lighting throughout

220/240 Volt:

- 7kW diesel generator in own sound shield with water cooled specially silenced exhaust (Open only)
- Shore support inlet in cockpit locker with storage for cable
- Polarity check system
- Earth leakage safety trip
- Power points to all areas

### **Fuel System**

- Twin fuel tanks (in NS8 marine grade alloy) with interconnection system giving 291 gal/350 US gal/1325l capacity
- Fuel fillers on port and starboard side decks
- High capacity duplex fuel filters/water traps

### **Water System**

- 79 gal/95 US gal/358l plus 11gal/13 US gal/50l hot water calorifier, heated by engines and 240v immersion heater
- Water level gauge
- Deck filler

### **Fire Extinguishers**

- Automatic/manual override fire extinguishers in engine room with manual override
- Hand-operated fire extinguishers (4) in owner's stateroom, guest cabin, galley and deck saloon

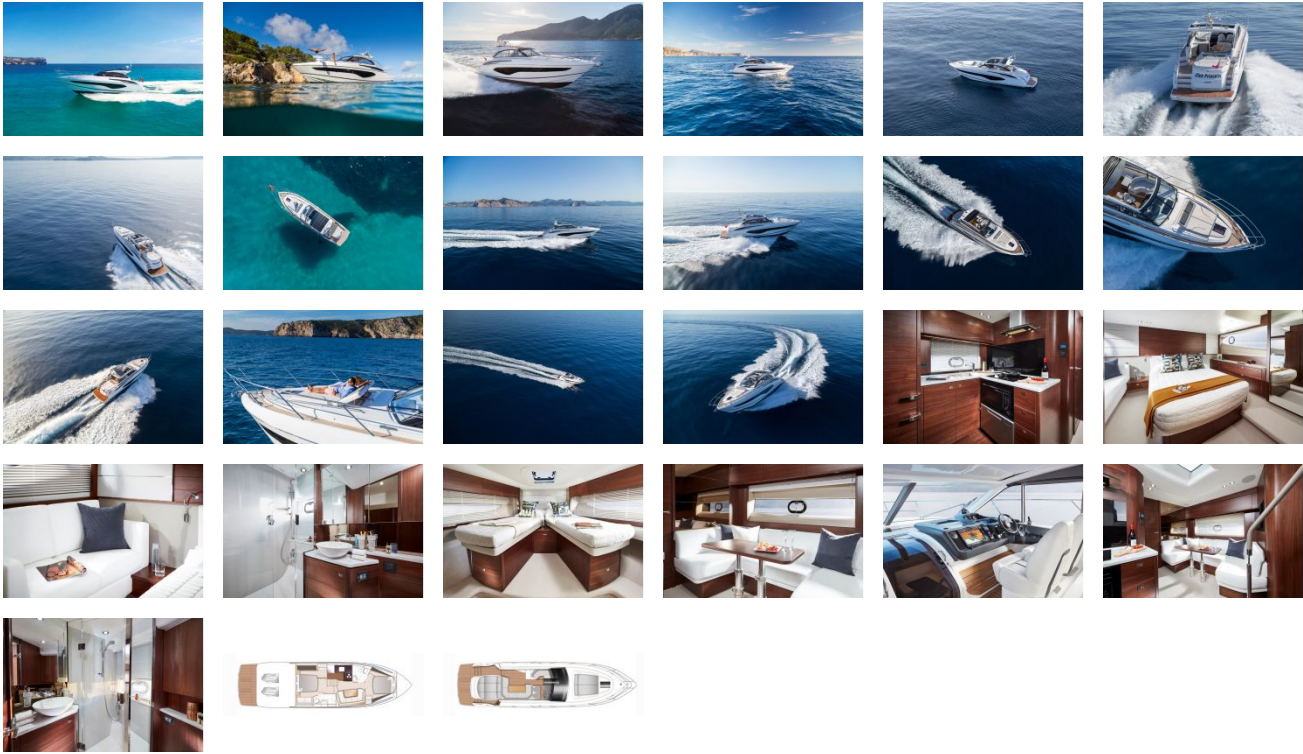
## **Bilge Pumps**

- Automatic electric bilge pumps (3)
- High capacity manual bilge pump with valve system and suction points in same areas

## **Other Items Supplied as Standard**

- Ensign staff
- Fenders (6) and wraps (4)
- First aid kit
- Tool kit
- Set of manuals
- Quilted bedspreads in all cabins

# GALLERY



**Jefferson Beach Yacht Sales**  
24400 Jefferson Avenue,  
St. Clair Shores, MI 48080  
Phone: 866-490-5297