



**Jefferson Beach Yacht Sales**  
24400 Jefferson Avenue,  
St. Clair Shores, MI 48080  
Phone: 866-490-5297

# Princess S78

Boat Type: Motor Yacht



## OVERVIEW

Distinctively cool whilst propelling you to an exhilarating 39 knots, the all-new S78 is the flagship of the Princess S Class. Her sportbridge inspires relaxation with a range of exclusive furnishings to choose from and seating areas that convert into sun loungers. Unique central access from her hydraulic bathing platform to the cockpit passes between twin sunpads whilst her foredeck features innovative seating with sunpads which can be converted to create additional aft facing seats. The perfect ambience is ensured across her sportbridge, saloon, cockpit and master cabin, where the world class NAIM Audio sound system comes installed as standard. Refined and captivating, she's more than everything you would expect from the largest Princess S Class.

Experience traditional craftsmanship reinvented throughout her integrated interior. Ambient lighting plays a supporting role behind furniture, feature panels and through flooring. A cavernous main deck saloon seamlessly connects you to the world outside through full length side windows. Her well-equipped galley surpasses the highest of expectations whilst her dining area delivers a sense of versatile space with an ingenious sliding glass table. Below deck eight guests enjoy four beautifully appointed en suite cabins all bathed in natural light from the S78's elegant and expansive glazing, with a further aft cabin for occasional guests or 2-3 crew.

SPECIFICATIONS

Basic Information

Manufacturer:	Princess	Boat Type:	Motor Yacht
Model:	S78	Hull Material:	
Hull Type:	Deep Vee	Category:	Power

Dimensions & Weight

Length:	78.00 ft	Draft - max:	5 ft 10 in - 1.78 meter
LOA:	80 ft 11 in - 24.66 meter	Bridge Clearance:	-
Beam:	18 ft 11 in - 5.77 meter	Dry Weight:	118446 ft
Deadrise Aft:	-		

Tank Capacities

Fuel Tank:	1585 gallons - 1 tank(s)	Holding Tank:	-
Fresh Water Tank:	356 gallons - 1 tank(s)		

Accommodations

Total Cabins:	-	Crew Cabins:	-
Total Berths:	-	Crew Berths:	-
Total Sleeps:	-	Crew Sleeps:	-
Total Heads:	-	Crew Heads:	-
Captains Cabin:	No		

FEATURES

Deck Fittings

- Teak-laid transom platform, cockpit deck, sportbridge, sportbridge stairway, side decks and foredeck walkthrough
- Reversible electric anchor winch with foredeck and helm position controls
- Self-stowing 50kg/110lbs Delta anchor with 100m of chain
- Twin electric sternline mooring winches
- Storage lockers for rope, fenders and foredeck sunbed cushions
- Foredeck seating and sunbathing area (sunbed converts to aft facing seating)
- Stainless steel cleats, fairleads and handrails
- LED deck level lighting
- Freshwater deck/anchor wash

Cockpit

- Configurable seating area with teak folding table
- Twin sunbeds aft with lazarette and garage with electro-hydraulic door and tender launch system with electric winch below (4.45m tender)
- Central transom gate leading to bathing platform with electro-hydraulic raise/lower mechanism, foldaway swimming ladder and hot and cold transom shower
- Naim audio system with waterproof speakers (2)

- Lockable gas strut assisted hatch to engine room
- Liferaft storage
- Remote control 3.6m telescopic passarelle with folding handrail
- Cockpit cover

### **Sportbridge**

- Helm position with powered raise/lower console, repeat navigation equipment including radar/chartplotter and engine instrumentation
- Twin adjustable helm seats
- Large free standing seating area with table
- L-shaped seating to port and starboard (converts to sunpad)
- Wetbar including sink with electric barbecue and top loading coolbox
- Naim audio system with waterproof speakers (2)

### **Lower Helm Position**

- Twin adjustable helm seats
- Helmsman's door to side deck and electric opening window to port
- L-shaped seating to port
- Full engine instrumentation including fuel gauges, exhaust temperature, fuel contamination alarms and rudder position indicator
- Navigation system including colour radar, GPS and chartplotter (2 displays), VHF/RT, speed and distance log, echo sounder with alarm and high speed magnetic compass
- Controls for bow thruster, windscreen wipers, bilge pump and trim tabs (with indicators)
- Chart table
- 24v and 240v control panel
- Red night lighting
- Toughened glass screen (clear for night vision)

### **Deck Saloon**

- Stainless steel framed sliding doors to aft cockpit with integrated opening window aft of galley
- U-shaped seating area with two-seater chaise and coffee table
- Entertainment centre incorporating 55" UHD LED TV on electric raise/lower mechanism with Naim audio system and ceiling mounted speakers (2)
- Sideboard unit with bottle and glass storage and refrigerator
- L-shaped dining area with glass table
- Skylights with reflecto-glass and sliding blinds (option of powered opening roof)

### **Galley**

- 4-zone induction hob
- Combination microwave/convection oven with grill
- Twin stainless steel sinks with mixer tap
- Full height refrigerator/deep freezer
- Icemaker
- Dishwasher
- Storage lockers, cupboards and drawers
- Electrically operated sliding glass partition from saloon

### **Accommodation**

- All cabins and bathrooms feature opening portholes and air conditioning outlets
- All cabins feature 220/240v power points
- All mattresses pocket sprung (excluding crew)
- All bathrooms feature full shower stalls, electric freshwater toilets, extractor fan and 240v shaver points

#### **Owner's Stateroom**

- Large double bed with drawers below
- Dressing area with wardrobes with hanging and drawer storage
- Dressing table with chair
- Sofa
- Built in safe
- 40" UHD LED TV, DVD Blu-ray with Naim audio system with speakers (2) and subwoofer
- En suite bathroom
- Dedicated access with lobby area
- Combination washer/dryer and storage area is fitted in the owner's stateroom lobby area with the option of fitting separate washing machine and tumble dryer

#### **Forward Guest Cabin**

- Large double bed with drawers below
- Wardrobe with shelves
- Dressing table with stool
- Naim audio system
- Deck hatch
- En suite bathroom

#### **Starboard Guest Cabin**

- Large double bed with drawers (with option of powered sliding berths)
- Wardrobe with shelves
- Dressing table with stool
- En suite bathroom with day access

#### **Port Guest Cabin**

- Two single beds with drawers below (with the option of powered conversion to double)
- Wardrobe with shelves
- Storage lockers
- En suite bathroom

#### **Crew Cabin**

- Two single beds, wardrobe and storage lockers
- Storage unit with space for optional fridge
- Bathroom with shower, electric freshwater toilet and washbasin
- Access to engine room

#### **Interior Finish**

- Furniture in Rovere Oak with satin or high gloss finish. Walnut or Alba Oak available as an option
- Solid surface worktops and tiled floors in all guest bathrooms

- Galley worktops in choice of granite or quartz
- Choice of high quality carpet and upholstery fabric from extensive range
- Blinds or sunscreens to all windows and portholes
- Timber-laid galley, saloon and helm floors
- Crew cabin fitted with non slip safety flooring

### **Power and Drive Systems**

- 5-bladed propellers in nickel aluminium bronze
- Bow thruster (240kgf/529lbf)
- Power-assisted electro-hydraulic steering system with hydraulic back-up
- Electronic engine and gear shift controls
- Dripless shaft seals
- Engine room extractor fan with electronic time delay

### **Electrical System**

24 Volt:

- 4 x heavy duty batteries for engine starting
- 6 x heavy duty auxiliary batteries
- 2 x 60-amp battery charger charges both banks of batteries via an automatic switch charging system
- Remote battery master switches with control switch at main panel
- LED lighting throughout

220/240 Volt:

- 22.5kW diesel generator in own starting battery and specially silenced exhaust
- 2 x 63-amp shore support inlet
- Earth leakage safety trip, polarity check system, circuit breakers on all circuits
- Power points in all areas

### **Fuel System**

- Twin fuel tanks (in NS8 marine grade alloy) with interconnection system giving 1320 gal/1585 US gal/6000l capacity
- Fuel fillers on port and starboard side decks
- High capacity duplex fuel filters/water traps with audible and visual fuel contamination warning system
- Remote fuel cocks in cockpit locker

### **Water System**

- 253 gal/304 US gal/1150l plus 44 gal/53 US gal/200l hot water calorifier, heated by engines and 240v immersion heater
- Water level gauge
- Deck filler
- Electric freshwater WC system with 99 gal/119 US gal/450l holding tank

### **Air Conditioning**

- 156,000Btu chilled water system with outlets in all accommodation areas and incorporating reverse cycle heating with linked windscreen demist system. Suitable for tropical conditions (40°C)

## **Fire Extinguishers**

- Automatic/manual override fire extinguishers in engine room with warning system at both helm positions
- Hand-operated fire extinguishers in all cabins, galley and lower helm (7)

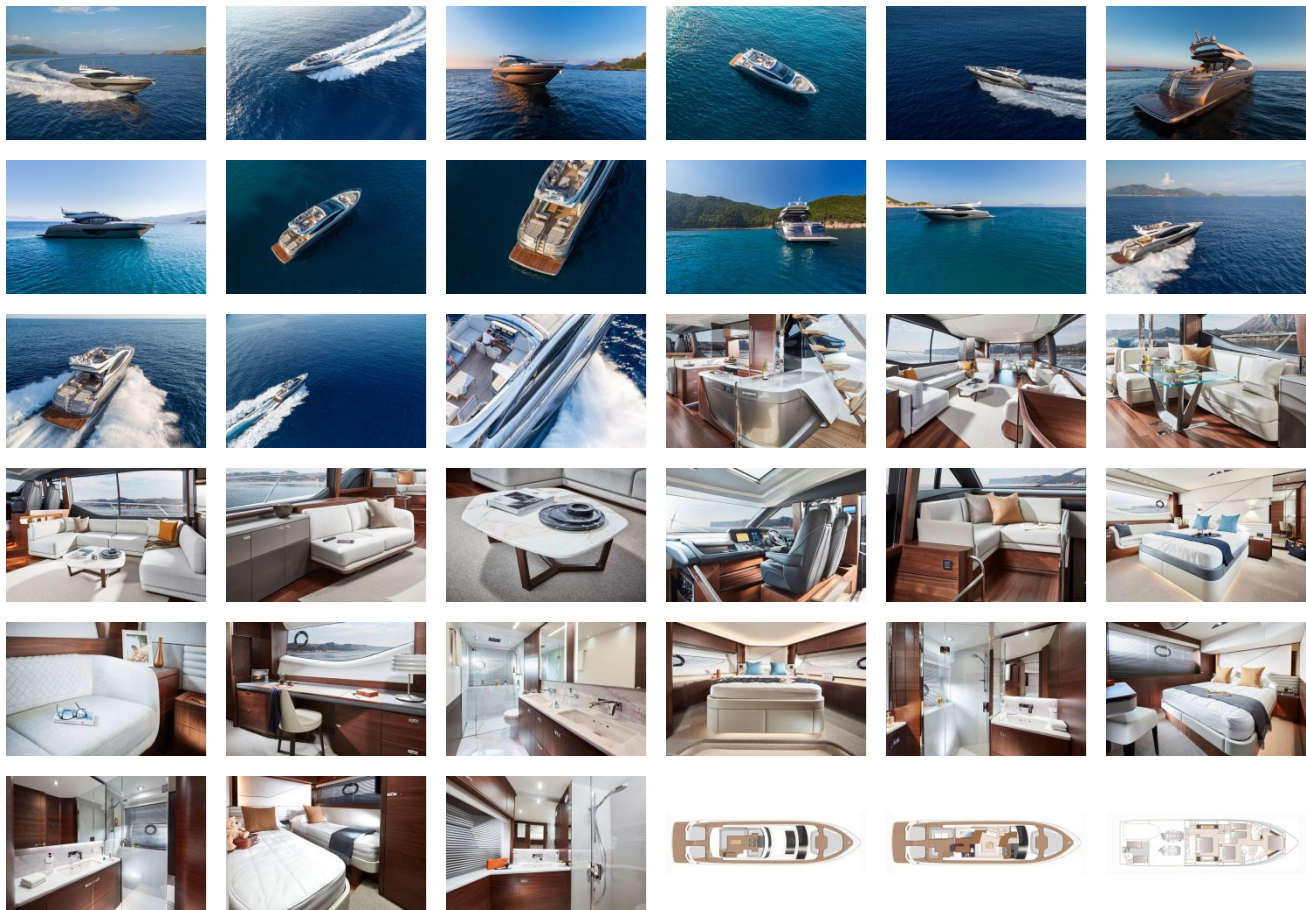
## **Bilge Pumps**

- Automatic electric bilge pumps (7)
- High capacity manual bilge pump with valve system and suction points in same areas

## **Other Items Supplied as Standard**

- Set of cutlery, crockery and glasses (8)
- Set of towels (8 large, 8 small)
- Ensign staff
- Fenders (6) and wraps (4)
- First aid kit
- Set of manuals
- Quilted bedspreads supplied to all cabins (except crew)

GALLERY



**Jefferson Beach Yacht Sales**  
24400 Jefferson Avenue,  
St. Clair Shores, MI 48080  
Phone: 866-490-5297