



South Jersey Yacht Sales  
900 Ocean Drive  
Cape May, NJ 08204  
Phone: 609-884-1600

# Albemarle 41 Express

Boat Type: Express



## OVERVIEW

### ALBEMARLE 41 EXPRESS

The newly refined **41 Express** is an impressive offshore fishing machine that combines striking lines and dramatic Carolina-style flare, with unparalleled interior design, innovation, and craftsmanship. Designed to handle like a sports-car in the toughest of seas, the rock solid construction of the **41** speaks for itself and the elegant refinements will make serious offshore fishing both enjoyable and comfortable.

On deck, the **41** has an oversized cockpit with gunnels designed at just the right height for wiring marlins or gaffing tunas. Standard equipment such as livewell, ice/bait coolers, tackle storage, rigging stations, oversized fishboxes, and a transom door provide the most hardcore fisherman with everything needed to haul in the big catch. The helm's "palm beach style" pod and single lever controls give the boat a yacht like appeal and makes for easy handling when

fighting fish or at the dock. The oversized windshield allows great visibility and excellent protection from the elements and the wrap around seating provides comfort for the crew when running out and back from the offshore grounds.

The modern cabin has all the creature comforts one could imagine. Appointments include a spacious forward stateroom, oversized galley, head with separate shower, and a “convertible settee” that provides additional sleeping accommodations for three. The new “open-air” layout provides also incorporates abundant storage for rods, gear, clothes, and food and drinks. Everything about this layout proves that luxury and fishability can co-exist in one stunning and well refined sportfishing package.

## SPECIFICATIONS

### Basic Information

Manufacturer:	Albemarle	Boat Type:	Express
Model:	41 Express	Hull Material:	Fiberglass
Year:	2020	Hull Type:	Deep Vee
Category:	Power		

### Dimensions & Weight

Length:	41.00 ft	Draft - max:	4 ft - 1.22 meter
LOA:	41 ft - 12.5 meter	Bridge Clearance:	8 ft 8 in - 2.64 meter
Beam:	15 ft 9 in - 4.8 meter	Dry Weight:	32000 ft
Deadrise Aft:	15.00 °		

### Tank Capacities

Fuel Tank:	600 gallons - 1 tank(s)	Holding Tank:	-
Fresh Water Tank:	100 gallons - 1 tank(s)		

### Accommodations

Total Cabins:	-	Crew Cabins:	-
Total Berths:	5	Crew Berths:	-
Total Sleeps:	-	Crew Sleeps:	-
Total Heads:	-	Crew Heads:	-
Captains Cabin:	No		

## FEATURES

### CONSTRUCTION

- Accessible Gelcoated Bilge Areas
- Bonded and Mechanically Fastened Hull, Deck, and Liner
- Bottom Paint (Black) with Barrier Coat – True Waterline
- Fiberglass Encapsulated Stringer System
- Heavy Duty Vinyl Rub Rail with Stainless Steel Insert

- Molded, Hand-Laid Fiberglass Construction with Premium Gelcoat Finish and Vinylester Resin
- Non-Skid Deck and Cockpit

#### MECHANICAL

- 95 Gallon Fresh Water Tank with Pressurized System
- Acme CNC Machined 4 Blade Nibral Propellers
- Acoustical and Thermal Engine Room Insulation
- Automatic Fireboy Fire Protection System
- Bilge Pumps (3) with Indicator Lights, Float Switches (3), High-water Alarms (3)
- Bright White Gelcoat Finish in Engine Room
- Bronze Rudders with Stainless Steel Shafts
- Bronze Struts
- Dripless Shaft Seals
- Electronic Side-Mount, Single Lever Engine Controls
- Engine Alarm System
- Engine Hour Meters
- Engine Room Blowers
- Engine Synchronizers
- Fiberglass Mufflers
- Flanged Bronze Seacocks on all Through-Hulls below Water Line
- Fuel/Water Separator Filters
- Gauge for Holding and Freshwater Tanks
- Gelcoated Engine Room Bulkheads
- Holding Tank with Dockside and Overboard Pumpout
- Hot Water Heater (12 US gal)
- Hydraulic Steering System w/ Power Assist
- Hydraulic Trim Tabs
- Sea Strainers (External)
- Stainless Steel Double Taper Shafts
- Trolling Valves
- Twin Freshwater Cooled Diesel Engines
- Underwater Exhaust

#### ELECTRICAL

- 50 A Dockside Service with 50' Shore Power Cord
- 24 V DC Electrical System
- 9 kW Onan Diesel Generator, Freshwater Cooled with Remote Start and Gauge Panel
- AC Electrical Distribution Panel with Digital Line Voltage and Load Meter and Circuit Breakers
- Heavy-duty Marine Batteries(6) with Boxes
- Battery Charger – 65 Amp (24 V)
- Battery Paralleling
- Bonded Electrical System with Transom Zinc Plate
- Color-Coded Wiring System
- DC Breaker with Uninterrupted Power to Bilge Pump and High Water Alarm
- DC Electrical Distribution Panel with Digital Battery Voltage and Load Meters
- Dual-Trumpet Air Horn
- Electric Battery On/Off Switches, Vapor Proof
- Ground Fault Receptacles in Galley, Head, Engine Room &Lazarette
- LED Engine Room Lights

- LED Interior Lighting Throughout
- LED Navigation Lights
- Prewiring for Electronics at Helm

#### DECK

- Anchor Locker Hatch
- Anodized Aluminum Bow Rail
- Bow Pulpit with Anchor Roller
- Bomar Hatch with Screen and Shade
- Freshwater Wash Down Spigot in Anchor Locker
- Freshwater Windsheild Washers (3)
- Non-Skid Surface
- Stainless Steel Bow, Stern and Spring Cleats
- Stainless Steel Stern Hawse Pipes
- Windshield Wipers (3)
- Windshield with Ventilation

#### HELM DECK

- Bench Seating with Storage Below
- Companion-Way Door
- Complete Instrumentation with LED Lighting
- Day Hatch for Engine Room Access
- Drink Holders
- Flush Mounted Compass with Light
- Molded Fiberglass Helm Deck, Hydraulically Lifted, with Full Length Gutters
- Non-Skid Surface
- “Palm Beach Style Pod” Helm
- Pedestal Mounted Helm Seats (2)
- Rocker Style Switch Panel with Backlight
- Stainless Steel Steering Wheel
- Tackle Storage under Port Side Bench Seat
- Trim Tab Switches with Indicators

#### COCKPIT

- 50 Amp Shore Power Connection
- Aluminum Plate Laminated-in for Mounting Fighting Chair
- Cable TV Connection
- Fresh and Raw Water Washdown
- Large, Insulated In-Deck Fishbox with Macerator
- LED Courtesy Lighting Under Gunwales
- Live Bait Well with “Calming Blue” Gelcoat and LED Light
- Molded-in Boarding Steps, Port & Starboard
- Scuppers for Self-Bailing
- Stainless Steel Flush-mounted Rod Holders (4)
- Tackle/Bait Prep Center Including Tackle Storage, Sink, Ice Box (Ready for Optional Freezer)
- Transom Door
- Transom Fishbox

#### MAIN CABIN / SALON

- Access to Bilge, Sealed
- Reverse Cycle Air Conditioning/ Heat System – 24,000 BTUs
- Carpeting Throughout
- Chrome Finished Positive Catch Push Button Latches on All Cabinetry
- Coast Guard Safety Kit
- Central Vacuum System
- Custom Cherry Cabinetry with Satin Finish
- Dinette, Converts to Double Berth
- Entertainment Center with TV/DVD, AM/FM/CD
- LED Rope Lighting throughout Cabin
- Pullman Berth Above Dinette
- LED Reading Lamp
- Rod Storage Locker
- Salon Table
- Whisper Wall® Treatment Throughout

#### FOREWARD STATEROOM

- Carpeting
- Oversized Cedar-Lined Hanging Lockers (2)
- Recessed Indirect LED Lighting
- Rod Storage Locker
- Storage Drawers (10)
- Queen Size Bed with 6-Inch Spring Mattress and Storage

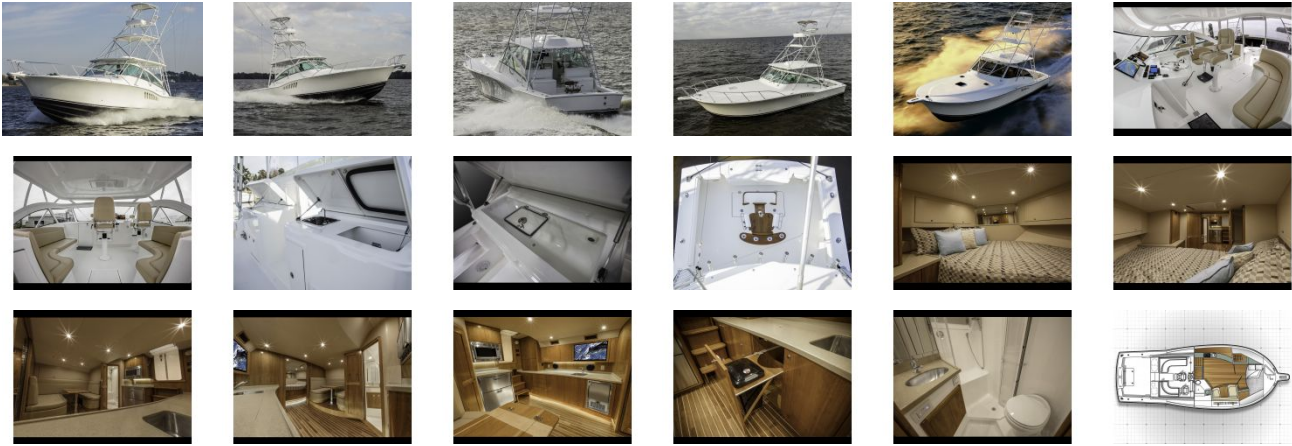
#### HEAD

- Electric Head
- Exhaust Fan
- LED Lighting
- Medicine Cabinet
- Mirror
- Non-Skid Floor
- Separate Stall Shower with Automatic Sump Pump
- Solid Surface Vanity with Sink and Storage
- Towel Bars and Toilet Paper Holders

#### GALLEY

- AC/ DC Refrigerator / Freezer Drawers
- Electric, Two-Burner Cook Top, Recessed, with Cover
- Expansive Solid Surface Countertop with Sink
- Ice Maker
- LED Countertop Lighting
- Microwave/Convection Oven
- Storage Cabinets and Drawers
- Trash Receptacle

GALLERY



**South Jersey Yacht Sales**  
900 Ocean Drive  
Cape May, NJ 08204  
Phone: 609-884-1600