



**DimillosYacht Sales**  
1 Long Wharf, Portland, ME 04101  
Phone: 207-773-7632

# Eastern 20' Center Console

Boat Type: Center Console



## OVERVIEW

There are few boats more versatile than this well-designed 20'2" center console. With a 7'6" beam, she offers significant interior space and carrying capacity, but she still performs well with an economical 90-hp engine and trailers easily behind a mid-sized tow vehicle. Note in her performance profile how her round chine, flat planing surface, and keel give her efficient performance at a wide range of useful speeds in the 'teens and twenties, with enough top-end power for tubing and skiing. Her proud, flared bow and sharp forefoot allow her to cleave choppy seas and shoulder them aside easily.

The 200 CC has launched the careers of many New England commercial lobster fishers, but she's equally at home with a family aboard, taking advantage of the forward console and bow seating (with storage under) and the comfortable double-wide leaning post at the helm (which can hold a cooler beneath).

Need to protect little ones or cargo from flying spray? Add a folding bow dodger.

The console offers plenty of space for fishing/navigation electronics with connected VHF radio.

For serious fishing, add pop-up cleats, under-gunwale rod racks, in-gunwale holders, a livewell, and tackle storage.

The 200 CC is easy to fit out for your own specific uses, and her classic Yankee good looks will turn heads wherever you take her.

## SPECIFICATIONS

### Basic Information

Manufacturer:	Eastern	Boat Type:	Center Console
Model:	20' Center Console	Hull Material:	
Year:	2019	Hull Type:	
Category:	Power		

### Dimensions & Weight

Length:	20.00 ft	Draft - max:	0 ft 10 in - 0.25 meter
LOA:	20 ft 2 in - 6.15 meter	Bridge Clearance:	-
Beam:	7 ft 6 in - 2.29 meter	Dry Weight:	1500 ft
Deadrise Aft:	-		

### Tank Capacities

Fuel Tank:	40 gallons - 1 tank(s)	Holding Tank:	-
Fresh Water Tank:	-		

### Accommodations

Total Cabins:	-	Crew Cabins:	-
Total Berths:	-	Crew Berths:	-
Total Sleeps:	-	Crew Sleeps:	-
Total Heads:	-	Crew Heads:	-
Captains Cabin:	No		

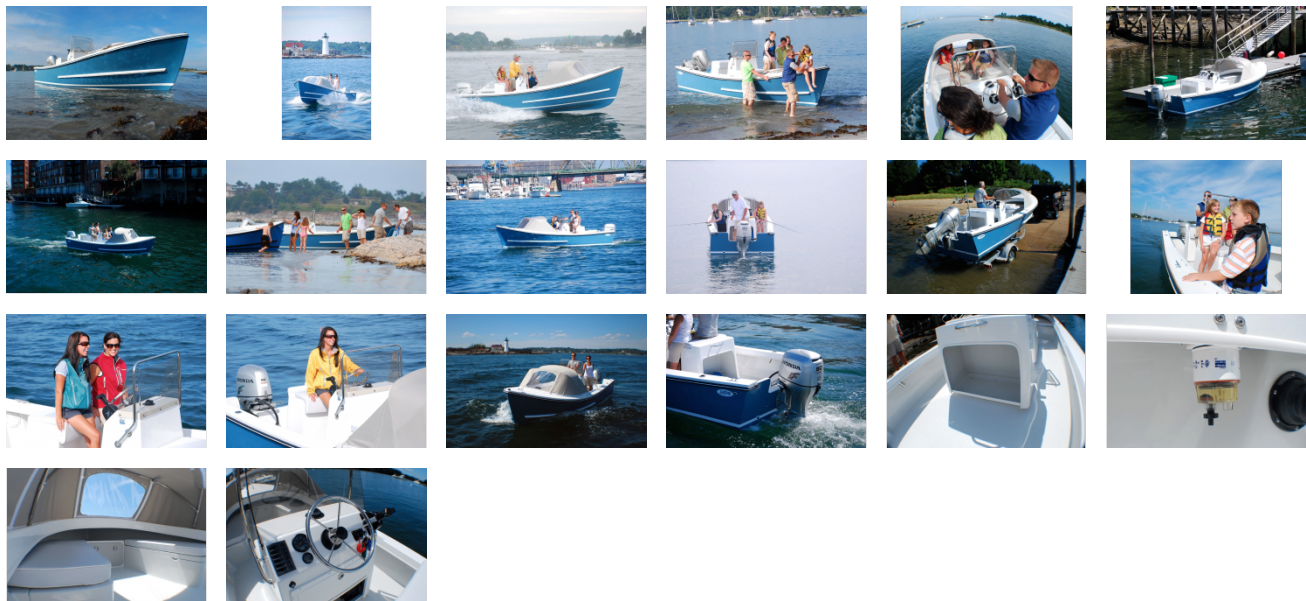
## FEATURES

### Features:

- Navigation Lights
- Stainless Steel Hardware
- Black Rub Rail
- Spray Rails
- Teleflex No Feed Back Steering
- Electric Bilge Pump & Auto Float
- 40 Gallon Fuel Tank, Filter & Water Separator
- Sport Console with Seat & Cushions
- Sport Console Windshield & SS Rail
- V-Berth Seating

- Compass
- Custom Leaning Post with Cushion & Grab Rail
- Boot Stripe
- Self Bailing, Inner Liner Deck
- Inspection Deck Plates
- Scuppers
- Stainless Bow Eye
- 12V Switch Panel
- Wiring for Battery Under Console
- Flush-Mounted Stainless Steel Rod Holders (pair)
- 12V Accessory Plug

GALLERY



**DimillosYacht Sales**  
1 Long Wharf, Portland, ME 04101  
Phone: 207-773-7632