



DimillosYacht Sales
1 Long Wharf, Portland, ME 04101
Phone: 207-773-7632

Eastern 248 Center Console

Boat Type: Center Console



OVERVIEW

Eastern's 248 Center Console offers the kind of powerful hull you'll see around town docks along the Maine coast.

They're "island boats," fit for hauling people, groceries, and other necessities to island cottages in all weather.

With her 8-foot-6-inch beam and Armstrong transom bracket, she offers comfortable seating with classic striped cushions in front of the console, in a "V-berth" abaft her proud bow, and astern across her full transom.

A folding bow dodger protects people sitting forward, while a hard T-top protects the skipper and companion. The 37-inch-wide console holds a changing room with portable toilet and adult-sized headroom

So how much power does this rig require? Try a strong 150-hp four-stroke outboard, half what her competitors require. She can run efficiently at a wide range of speeds, thanks to her Downeast workboat hull with flat run aft and keel. The skipper can throttle up in calm water or back off for comfortable running in slop. She runs solid and stable underway, with engine trim and transom trim tabs to fine-tune her running attitude to load and conditions. And by the way, if Eastern's 248 Center Console offers this range of basic values, how good a job will she do as a family day boat, a race committee boat, or a fishboat? Yes, she can serve all those purposes, looking good in the process, and

she won't spend a lot of time at the fuel dock. You don't need to own an island to find great uses for her.

SPECIFICATIONS

Basic Information

| | | | |
|---------------|--------------------|----------------|----------------|
| Manufacturer: | Eastern | Boat Type: | Center Console |
| Model: | 248 Center Console | Hull Material: | |
| Year: | 2019 | Hull Type: | |
| Category: | Power | | |

Dimensions & Weight

| | | | |
|---------------|------------------------|-------------------|------------------------|
| Length: | 24.00 ft | Draft - max: | 1 ft 3 in - 0.38 meter |
| LOA: | 24 ft - 7.32 meter | Bridge Clearance: | - |
| Beam: | 8 ft 6 in - 2.59 meter | Dry Weight: | 1985 ft |
| Deadrise Aft: | - | | |

Tank Capacities

| | | | |
|-------------------|------------------------|---------------|---|
| Fuel Tank: | 64 gallons - 1 tank(s) | Holding Tank: | - |
| Fresh Water Tank: | - | | |

Accommodations

| | | | |
|-----------------|----|--------------|---|
| Total Cabins: | - | Crew Cabins: | - |
| Total Berths: | - | Crew Berths: | - |
| Total Sleeps: | - | Crew Sleeps: | - |
| Total Heads: | - | Crew Heads: | - |
| Captains Cabin: | No | | |

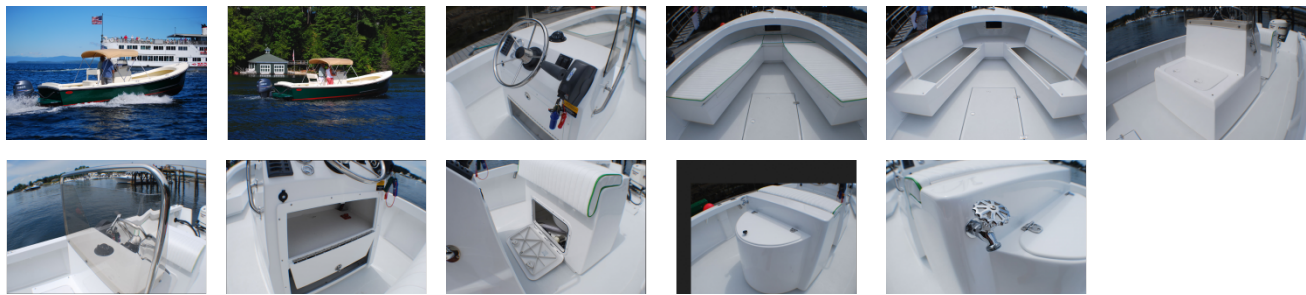
FEATURES

Features:

- Navigation Lights
- Stainless Steel Hardware
- Black Rub Rail
- Spray Rails
- Fuel Filter & Water Separator
- Electric Bilge Pump & Auto Float
- V-Berth Seating with Cushions
- Compass
- Boot Stripe
- Console Windshield & Stainless Steel Rail
- Self-Bailing, Molded Inner Liner
- Inspection Deck Plates
- Scuppers
- Stainless Steel Bow Eye

- Wiring For Battery Under Console
- Console with Porta Pottie, Front Seat & Cushion
- 12V Accessory Plug
- Hydraulic Steering Sea Star
- Trim Tabs
- Custom Leaning Post

GALLERY



DimillosYacht Sales
1 Long Wharf, Portland, ME 04101
Phone: 207-773-7632