



DimillosYacht Sales
1 Long Wharf, Portland, ME 04101
Phone: 207-773-7632

Eastern 248 Tournament

Boat Type: Pilothouse



OVERVIEW

Based on Eastern's able, rugged 248 hull, this Tournament model is all about fishing—efficiently, effectively, safely, and above all, comfortably and happily.

The 248 Tournament shares the hull, cabin, and pilothouse with the 248 Islander, including its cabin forward with V-berth, head (portable with pumpout standard) and hanging locker. In the pilothouse opposite the helm is an L-shaped lounge. The back of the lounge forms a multi-drawer tackle center with cutting board and sink on top. A 30-plus-gallon transom livewell with toe-rail beneath replaces the Islander's aft bench seat. An optional transom door provides access to fight fish around the Armstrong bracket and engine, in appropriate seas. The aft edge of the cabin top holds a six-rod rocket launcher, and four gunwale holders secure more. There's space in the cabin to mount rod racks overhead for lockable storage. A pump-out fish box in the cockpit sole takes care of the catch.

As with the 248 Explorer and Islander, the 248 Tournament performs well with a single 150-hp outboard, unlike many of her competitors that require twice that much power. Family day cruising or serious fishing, Eastern's 248 Tournament can handle the challenge.

SPECIFICATIONS

Basic Information

Manufacturer:	Eastern	Boat Type:	Pilothouse
Model:	248 Tournament	Hull Material:	
Year:	2019	Hull Type:	
Category:	Power		

Dimensions & Weight

Length:	24.00 ft	Draft - max:	1 ft 3 in - 0.38 meter
LOA:	24 ft - 7.32 meter	Bridge Clearance:	-
Beam:	8 ft 6 in - 2.59 meter	Dry Weight:	3600 ft
Deadrise Aft:	-		

Tank Capacities

Fuel Tank:	90 gallons - 1 tank(s)	Holding Tank:	-
Fresh Water Tank:	-		

Accommodations

Total Cabins:	-	Crew Cabins:	-
Total Berths:	-	Crew Berths:	-
Total Sleeps:	-	Crew Sleeps:	-
Total Heads:	-	Crew Heads:	-
Captains Cabin:	No		

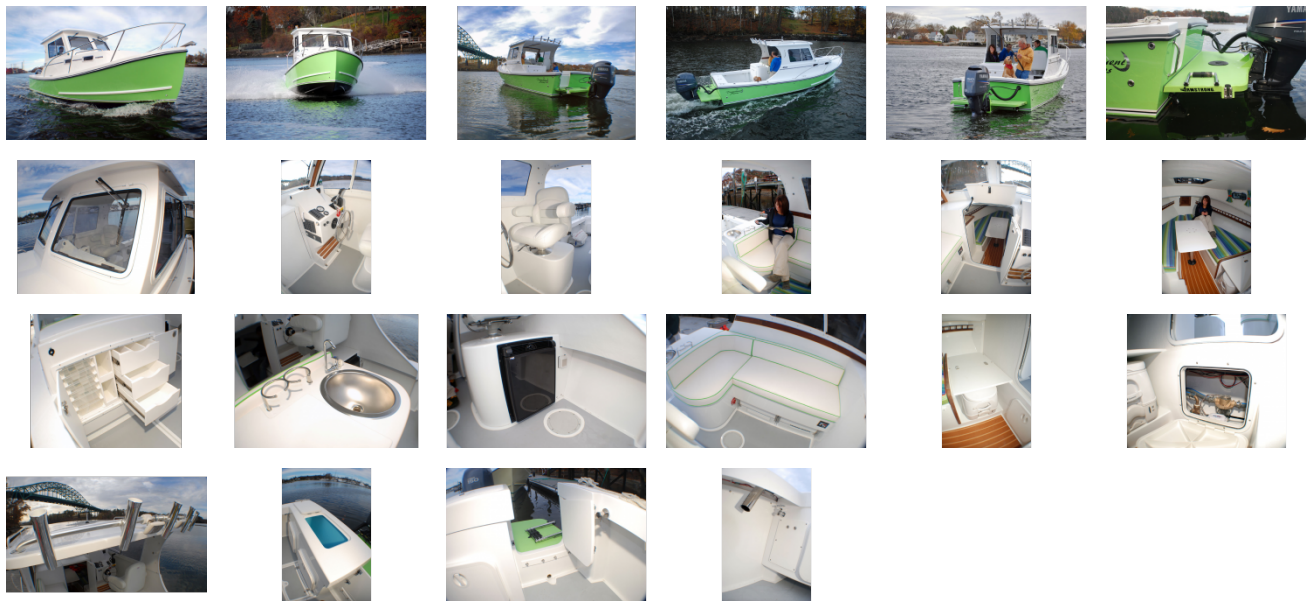
FEATURES

Features:

- Hard Cabin Sides with Sliding Window
- Navigation Lights
- Stainless Steel Hardware
- Black Rub Rail / Spray Rail
- (1) Electric Windshield Wiper
- Stainless Steel Bow Eye
- Boot Stripe
- Self Bailing Inner Liner
- Inspection Deck Plates
- 5 Rod Rocket Launcher
- Swivel Pedestal Helm Seat
- Insulated Fish Box with Pumpout
- Scuppers
- 90 Gallon Fuel Tank
- Fuel Filter & Water Separator
- Trim Tabs

- Electric Bilge Pump & Auto Float
- Porta Pottie with Dockside Pumpout
- L Shaped Settee with Cutting Board
- Sink & Tackle Station
- Dual Font Opening Windshields
- Side & Aft Curtains
- 12V Switch Panel
- V-Berths with Cushions & Shelves
- Stainless Steel Bow Rail
- (2) Dome Lights
- LED Courtesy Lights
- Transom Livewell & Washdown
- Single Outboard Bracket
- 20x20 Cabin Hatch
- Fold Down Helm
- Hanging Locker
- Teak Wire Ways
- Flush Mounted SS Rod Holders (2 pair)
- Sea Star Hydraulic Steering
- (4) Ports with Opening Glass and Screen
- 12V Accessory Plug
- Compass
- Anchor Roller / Deck Pipe

GALLERY



DimillosYacht Sales
1 Long Wharf, Portland, ME 04101
Phone: 207-773-7632