



**DimillosYacht Sales**  
1 Long Wharf, Portland, ME 04101  
Phone: 207-773-7632

# Eastern 27' Tournament

Boat Type: Saltwater Fishing



## OVERVIEW

Behind her powerful bow, the 27 Tournament carries a 10'3" beam on a hard-chine hull that runs well with twin 150-hp outboards or a single 250-300 mounted on an Armstrong bracket. Fishing is her specialty, making her dry, soft ride valuable for offshore runs. She's stable on a drift and efficient at a wide range of speeds from the low 'teens to the mid-twenties, so her skipper can dial her in to varying conditions. Belowdecks, the 27 Tournament offers a forward V-berth with space for overhead rod racks. An enclosed head provides a Vacu-flush toilet. A mid-berth under the helm deck presents additional sleeping capacity or capacious storage.

On the helm deck, a double-wide companion seat to port complements the comfortable helm chair, which has excellent visibility all around. A tackle station with sink and cutting board lies aft of the helm seat to makes rigging easy. Opposite is a double lounge seat with an aft-facing cooler seat. An aft curtain can close off the helm deck on snotty days, and a rocket launcher on the aft edge of the cabin top keeps six rods ready for action. The transom holds a large livewell and a transom door to the outboard bracket. In the cockpit sole is a large, insulated fishbox with pumpout. A bow thruster can ease the docking process, and an anchor windlass can make precise boat positioning a snap.

SPECIFICATIONS

Basic Information

Manufacturer:	Eastern	Boat Type:	Saltwater Fishing
Model:	27' Tournament	Hull Material:	
Year:	2019	Hull Type:	
Category:	Power		

Dimensions & Weight

Length:	27.00 ft	Draft - max:	2 ft 4 in - 0.71 meter
LOA:	27 ft 4 in - 8.33 meter	Bridge Clearance:	-
Beam:	10 ft 3 in - 3.12 meter	Dry Weight:	8000 ft
Deadrise Aft:	-		

Tank Capacities

Fuel Tank:	192 gallons - 1 tank(s)	Holding Tank:	-
Fresh Water Tank:	30 gallons - 1 tank(s)		

Accommodations

Total Cabins:	-	Crew Cabins:	-
Total Berths:	-	Crew Berths:	-
Total Sleeps:	-	Crew Sleeps:	-
Total Heads:	-	Crew Heads:	-
Captains Cabin:	No		

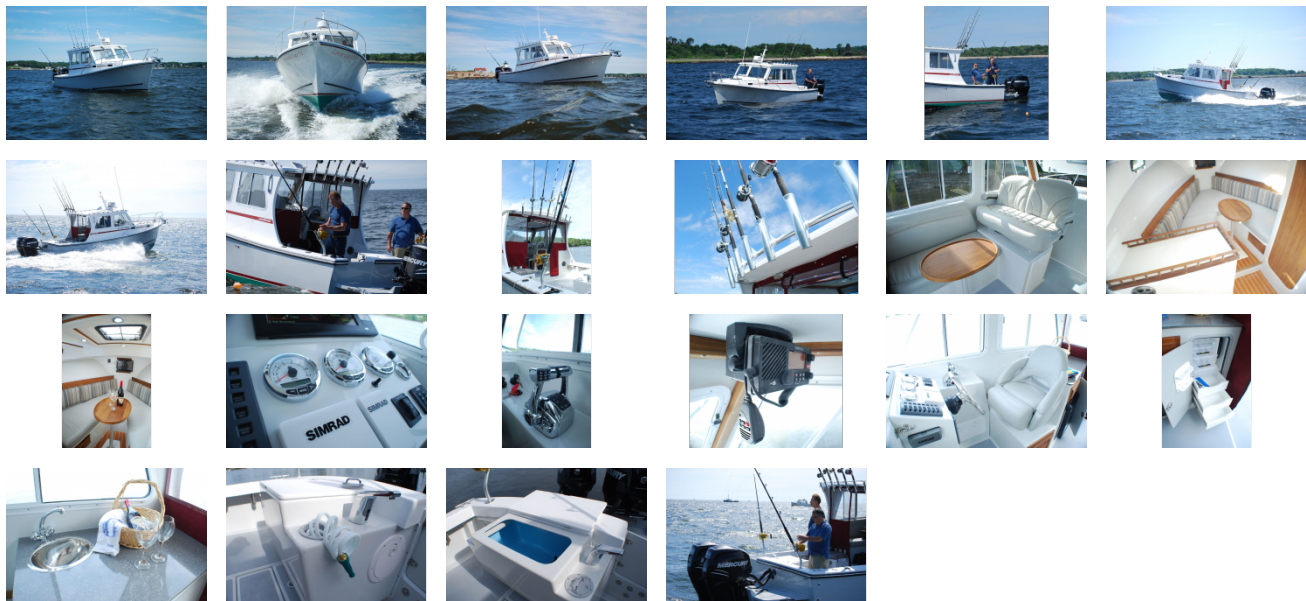
FEATURES

Features:

- Two/Tone, Cockpit Sole
- Hard Cabin Sides w/ Sliding Windows
- LED Spreader Lights
- Stainless Steel Hardware
- Black Rub Rail / Spray Rails with SS Insert
- (2) Electric Windshield Wipers
- Stainless Steel Bow Eye
- Self-Bailing, Inner Liner
- Inspection Deck Plates
- Coffin Berth with Cushion
- V-Berth Filler with Cushions
- V-Berths with Cushions & Shelves
- Outboard Bracket
- (4) Drink / Rod Holders
- Twin 96 Gallon Fuel Tanks

- (2) Fuel Filter & Water Separators
- Aft Curtain
- Scuppers
- Trim Tabs
- Transom Door
- Boot Stripe
- (4) 110 Outlets
- 20x20 Cabin Hatch
- Bow Roller / Deck Pipe
- Transom Livewell
- 5 Rod Rocket Launcher
- 12V Switch Panels
- Waste Basket
- Hanging Locker
- Teak Wire Ways
- Fold Down Helm
- Upgraded Helm Seat
- Navigation Lights
- TV / DVD
- Double Wide Companion Seat
- Port Upholstered Bench
- (2) Electric Bilge Pumps & Auto Floats
- Dual Front Opening Windshields
- Stainless Steel Bow Rail
- LED Dome Lights
- LED Courtesy Lights
- Galley with sink & refrigerator, stove, enclosed head, sink, vacu flush head, shower
- Wired for Dual Batteries with switch
- 30 Gallon Fresh water
- Hot Water Heater
- Cockpit Table - Teak
- Insulated Fish Box with Pump out
- Tackle Cabinet
- Raw Water Washdown

GALLERY



**DimillosYacht Sales**  
1 Long Wharf, Portland, ME 04101  
Phone: 207-773-7632