



North Point Yacht Sales  
7330 Edgewood Road  
Annapolis, MD 21403  
Phone: 410-280-2038

---

# MJM Yachts 53z

Boat Type: Cruiser



## OVERVIEW

### **The Largest Outboard Express Cruiser Ever**

The Third Outboard Express Cruiser in the company's unique new line up.

Bob Johnstone, founder and CEO of MJM Yachts, and son Peter, Director of Product Development, announced introduction of a quad-powered 53-foot yacht for summer 2019. With quad Mercury Verados, it is expected to reach speeds of 50 mph while offering the benefits boaters enjoy from smaller sport boats: shallow draft, easy maintenance, and easy handling around the docks. "Now in the 53z boaters can also enjoy the enhanced living space, all weather cruising, and smoother ride offshore that we all like in a bigger boat," said Bob Johnstone.

The Johnstones' MJM Yachts is just the right company to deliver on the promise of performance with comfort. The Doug Zurn-designed hull has a slippery 3.5-to-1 waterline length-to-beam ratio for great stability at higher speeds. The new model's predecessor, the MJM 50z, powered with triple IPS 600's, has a top speed of 40 knots (46 mph,)

considerably quicker than its downeast competition. MJMs are built stronger and lighter by Boston BoatWorks, the leader in advanced epoxy composite construction. The weight savings resulting from this unique design/build are reinvested by MJM to create a fast outboard-powered cruising yacht over 50 feet which, to date, has only been achieved by smaller boats or open center consoles.

Living spaces are generous and well appointed. Belowdecks, MJM for the first time offers as standard, a spacious two-cabin dual master suite layout with ensuite heads having large glass wall showers with seats. Only three steps up, on the flush bridge deck, there's a feeling of openness with large, lushly cushioned settees and moveable chairs that welcome family and friends aboard. Sliding safety glass side windows and powered windshields open fully to the fresh air, or when closed, allow for a fully climate-controlled environment.

Driving the 53z is sheer joy. The boat's shape, speed and power give it tremendous stability and sportscar response to the wheel. And, for those who demand a peerless ride, the 53z's optional Seakeeper gyro stabilizer dampens 93 percent of any roll, even at the dock.

Carry on a normal conversation at WOT? Yes, with the already quiet Verados behind the transom, the engines not only aren't visible from the bridgedeck, but at some speeds, they can barely be heard.

The MJM 53z is expected to carry ISO Category A Ocean Certification as does its predecessor model, the MJM 50z.

Boaters coming from the easy operating world of center consoles will appreciate 53z's Skyhook feature. Engage Skyhook to hold the vessel in place while you take your time with fenders and lines. Moving into your slip, Joystick Piloting makes landings a breeze, even singlehanded. The flush deck and side-boarding doors let you move easily from helm to cockpit and out onto the dock in seconds. Once there, it's a 10 minute hose-off and go. The MJM 53z quality exterior finishes and deck hardware keep maintenance to the barest minimum.

Johnstone summed it up, "With the twin MJM 35z and triple MJM 43z introduced last year, and particularly now with this new quad MJM 53z, the term outboard cruising yachts has become a reality. MJM offers yachts that are at the pinnacle of the outboard world. If you are nostalgic for the days when outboards were for fishing boats, we'll even install some rod holders and a live well."

## SPECIFICATIONS

### Basic Information

Manufacturer:	MJM Yachts	Boat Type:	Cruiser
Model:	53z	Hull Material:	
Year:	2019	Hull Type:	Modified Vee
Category:	Power		

### Dimensions & Weight

Length:	53.00 ft	Draft - max:	2 ft 11 in - 0.89 meter
LOA:	56 ft 3 in - 17.15 meter	Bridge Clearance:	-
Beam:	15 ft - 4.57 meter	Dry Weight:	-
Deadrise Aft:	19.00 °		

## Tank Capacities

Fuel Tank: 910 gallons - 1 tank(s) Holding Tank: -  
Fresh Water Tank: 150 gallons - 1 tank(s)

## Accommodations

Total Cabins: - Crew Cabins: -  
Total Berths: - Crew Berths: -  
Total Sleeps: - Crew Sleeps: -  
Total Heads: - Crew Heads: -  
Captains Cabin: No

## FEATURES

### Standard Specifications

Length overall 56'3" | Length on Deck 53'0" | Beam Max 15'0" | Draft: Drives Up 27", Down 35" | Deadrise/Transom 18.6 degrees | Displacement half-load 33,669 lbs | Quad Mercury 350 HP Verados | Air Height w/Radar 10'7" | Fuel 910 gal. | Fresh Water 150 gal.

### KEY FEATURES

- Innovative layout and design
- Advanced Epoxy composite construction
- Flush deck with side access doors
- Seakeeper gyro stabilizer
- Fully-opening powered windshields

### HULL & DECK

- Certified ISO CE Mark Category A Ocean
- Wet Prepreg Epoxy, E-glass, Corecell construction.
- Choice of Awlcraft 2000 paint w/3 coats clear on hull. NOTE: Metallic paint added stripes incur an upcharge
- 4 hull ports, 8 hatches & 6 portlights w/covers & screens
- Side doors and transom door to outboard platform.
- Custom stainless dive ladder & grab handle.
- Rigid FRP framed hard top w/powering windshields
- Tinted, triple sliding safety glass side windows. 'Roll-up' Strataglass aft door and panels.
- Secure, offshore sailboat-type companionway entrance
- Pilothouse settee lockers suitable for bikes & golf clubs
- Serving bar w/wine tumbler locker & 110V icemaker
- 29" bow rail w/polished welds and 16" teak burgee staff
- Muir anchor windlass with deck and cockpit controls
- 60# Ultra Anchor w/250' rode & 50' of SS chain
- Fresh-water chain/rode washer control at helm. • Stainless steel safety grab rails (17)
- 55x21 teak cockpit table w/cover
- 42x20 pilothouse table w/single leaf on sliding spider on pedestal (telescoping with double cushion optional)
- 85x24 pilothouse settees convert to double & single berths.

- Movable deck chairs (2) extend transom seat outboard

## **PILOTING & NAVIGATION**

- Stidd 500 Wide & Doublewide piloting seats
- 24" Edson destroyer wheel with varnished teak rim
- GoLight 320,000 cp bowrail LED spot/flood light
- LED navigation and anchoring lights.
- Kahlenberg D-0A air horn w/auto fog and anchor
- Ritchie SS-2000 4.5 Supersport compass.
- Raymarine Axiom 16 ProS HybridTouch MFD
- Raymarine Fathometer w/i70 multi-display
- Raymarine 4KW HD digital color radar w/dome
- Raymarine RAY63 VHF
- Mercury Autopilot, Skyhook & Vessel View 7 display.
- Raymarine 650 AIS Tracking System

## **PROPULSION**

- Quad Mercury Verados w/Joystick Piloting
- Sidepower Bow Thruster
- Mercury Active Trim and Trim tabs

## **SYSTEMS & PLUMBING**

- Seakeeper 9 Gyro-Stabilizer
- 3-Zone MarineAir 48,000 BTU HVAC System
- Central vacuum cleaning system
- 20-gallon stainless steel hot water heater.
- 150-gallon polyethylene fresh water capacity
- General Ecology Seagull IV water purifier
- Scandvik hot/cold shower on swim platform
- Masterflush heads (2) w/push-button controls
- Matched glass enclosed showers w/seats (2)
- 60 gallon holding tank w/macerator discharge.
- 13x13x7 SS galley sink w/Bamboo board cover • Stainless Vitrefrigo RF 5.5 cu. ft. 2-drawer fridge
- Top loading Isotherm freezer
- Dish drying locker with drain & vent.
- Ceramic Induction 2-burner stovetop
- 0.9 cu. ft. convection/microwave oven.

## **ELECTRICAL**

- Westerbeke 10KW 1800 RPM gas genset
- Victron inverter & chargers w/12v/120/220 Panels.
- Glendinning 50A Cord on reel
- Hubbell GFCI duplex 120v & USB outlets (8)
- LED Interior lighting w/dimmers
- 735-ampere hour house battery capacity.
- 315-ampere hour engine & genset battery capacity.

## **FORWARD STATEROOM**

- Ultra-Leather covered 78x60 island berth w/4-Drawers
- Dual hanging lockers & Storage Shelves over berth.
- Combo desk/dressing table
- Reading chair & ottoman (2 included for spare seating)
- Foam backed vinyl headliner & cherry hull siding

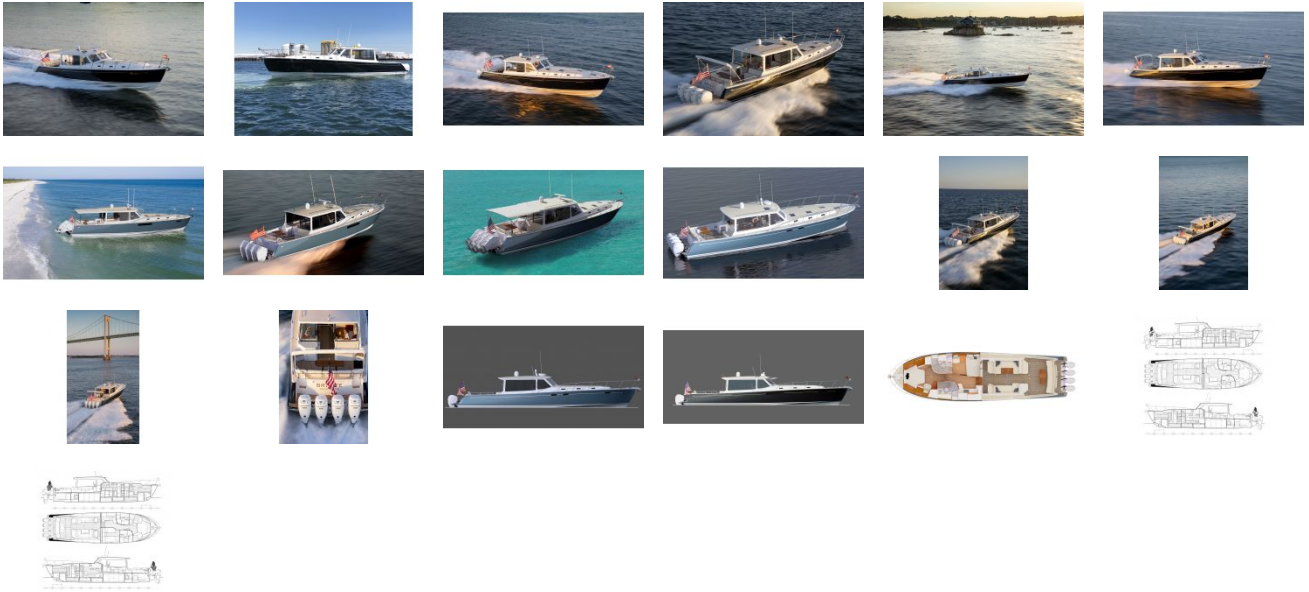
## **CONVERTIBLE GREAT CABIN**

- 78x26 by 99x26 "L" foot-to-foot twin berths.
- Coffee/Dining table creates 78x59 double berth. • Heavy Duty Pullman-style privacy curtain.
- Hanging Locker accessible through starboard head
- Large Storage Drawers (3) under Settees
- High-gloss finished teak & holly cabin sole
- Corian counter-tops w/paneled cherry cabinetry • Panel for 32" TV

## **COMMISSIONING GEAR & SERVICES INCLUDED**

- Fenders w/Covers (4), Docklines (5) & Boathook
- Compasses Adjusted w/Deviation Card, Nav Chip
- Full fuel, Owner Orientation, Boatyard Tool Kit'
- Fire Extinguishers, Engine Spares, 50'+25' Dock Hose
- Flare Kit, Medical Kit, LED Flash, Manuals

GALLERY



**North Point Yacht Sales**  
7330 Edgewood Road  
Annapolis, MD 21403  
Phone: 410-280-2038