



Yachting Solutions
229 Commercial Street
Rockport, ME, US
Phone: (207) 236-8100

Hunt Yachts 26 Center Console

Boat Type: Center Console



OVERVIEW

A sporty center console that doesn't skimp on sophistication, the 26 CC is ready to transform any outing into an incredible experience you won't soon forget. With seating for twelve and ample storage for gear and food, you're ready for fishing at dawn, cocktails at sunset and everything in between. Specifically designed and engineered to handle the three different types of propulsion- a feature no other center console currently offers, the 26 CC reaches speeds up to 43 knots with optional power. The Hunt Deep-V hull provides the remarkable comfort, dry ride, easy seakeeping, and roughwater performance that is the signature of every Hunt Yacht.

SPECIFICATIONS

Basic Information

Manufacturer:	Hunt Yachts	Boat Type:	Center Console
Model:	26 Center Console	Hull Material:	
Year:	2018	Hull Type:	Deep Vee
Category:	Power		

Dimensions & Weight

Length:	26.00 ft	Draft - max:	2 ft 9 in - 0.84 meter
LOA:	27 ft 4 in - 8.33 meter	Bridge Clearance:	-
Beam:	9 ft - 2.74 meter	Dry Weight:	6600 ft
Deadrise Aft:	-		

Tank Capacities

Fuel Tank:	100 gallons - 1 tank(s)	Holding Tank:	-
Fresh Water Tank:	15 gallons - 1 tank(s)		

Accommodations

Total Cabins:	-	Crew Cabins:	-
Total Berths:	-	Crew Berths:	-
Total Sleeps:	-	Crew Sleeps:	-
Total Heads:	-	Crew Heads:	-
Captains Cabin:	No		

FEATURES

HULL

- Solid E-glass bottom laminate
- Foam-cored topsides
- Vinylester osmosis barrier
- Foam-cored E-glass stringers & bulkheads
- Painted bilge
- Custom louvered vents painted to match hull
- Extruded vinyl sheer guard
- Molded interior liner
- Oyster white gel coat hull
- Single boot stripe in choice of color

DECK

- Deck: E-glass fabric with foam-cored laminate & molded non-skid pattern, Oyster white gel coat finish
- Swim platform: Teak with S.S. swim ladder
- Anchor locker: Molded into foredeck with hinged hatch
- Forward rail: Custom handrail
- Chocks: (2) S.S. bow chocks
- Cleats: (4) pull-up S.S. 8" cleats & (1) 10" bow cleat
- Ensign: Custom teak staff (varnished) with US flag & S.S. socket
- Burgee: Varnished teak burgee staff on bow with Hunt Burgee
- Lights: LED USCG-approved running lights
- Fender pad eyes: (4) Wichard pad eyes (2) port & (2) starboard
- Fills: S.S. water, fuel & waste

- Rod holders: (4) S.S.
- Stern eyes: (2) S.S.
- Drink holders: (8) - (2) forward console, (2) aft console, (2) on engine box & (2) horseshoe settee fwd
- Foam: High density foam core in way of high load hardware

CONSOLE

- Windshield: Custom & contoured
- Seating: Seat with cushion forward, and insulated 24-gal. fish well
- Head: Lockable standup with fresh water sink, electric saltwater head with Y-valve and holding tank, storage, 6' headroom
- Helm: Fiberglass control console with varnished teak shelf, handholds & trim; custom wood steering wheel; custom teak engine-instrument cluster and S.S. drink holder with stamoid cover
- Compass: Ritchie (calibration included)
- Electrical outlet: (1) 12V outlet at helm
- Footrest: Built-in
- Switch panel: Circuit-breaker switch panel
- Gauges: Custom
- Ventilation: Portlight in console
- Glove box: Teak face glove box

COCKPIT

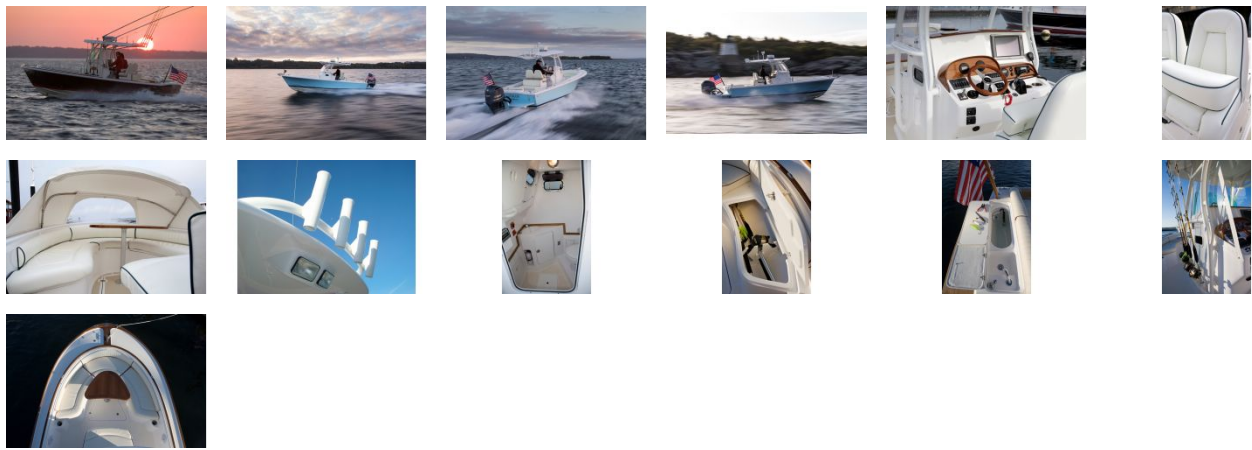
- Seating: Forward horseshoe cushion with cover, dual helm seat with adjustable bolster and surrounding stainless steel handrail. Aft-facing engine-box seat with stainless steel handrail.
- Covers: Stamoid covers for engine box with helm and companion seat, helm console, bow horseshoe seating and stern seat
- Cushions: Hand-stitched, Majilite with choice of contrasting piping
- Drainage: Self-bailing cockpit with guttered hatches
- Water: Freshwater shower & sink on transom
- Rod storage: (2) under-gunwale rod racks & lockable rod locker in stbd bow seat
- Lighting: (2) LED courtesy bridge deck lights, and LED strip lighting under coaming in cockpit
- Transom door: Stbd side
- Live well: In transom 21-gal
- Cooler: Insulated 24-qt, forward of console, under seat with overboard drainage
- Fishbox: Insulated 32-gal. in port bow locker

MECHANICAL & ELECTRICAL

- Engine: Volvo Penta EVC 5.3L (300 hp) gas with jackshaft / OceanX sterndrive, fresh-water cooled; Volvo Penta 2-year warranty Automatic fire extinguisher system in engine compartment (gas engine only) Engine data to interface with chartplotter
- Propellers: (2) counter-rotating S.S. 3-bladed props
- Steering: Hydraulic
- Sound reduction: Composite sound-reduction insulation 2"
- Cooling: Raw-water sea strainer, seacock with thru-hull intake
- Fuel: (2) 42-gallon tanks (gas); (2) 50-gallon tanks (diesel); (1) 100-gallon tank (gas)
- Water: (1) 15-gallon tank
- Waste: (1) 9-gallon tank

- Bilge pumps: (1) 1,100 GPH aft (automatic) & (1) 2000 GPH forward (automatic), high-water bilge alarm
- Batteries: (2) 12-volt marine grade AGM, 10-amp battery charger and in-console rotary switch
- VHF radio: ICOM M324 DSC
- Electrical outlet: (1) 12V outlet at helm
- Horn: AFI flush-mount 12-volt air horn

GALLERY



Yachting Solutions
229 Commercial Street
Rockport, ME, US
Phone: (207) 236-8100