



**North Point Yacht Sales**  
7330 Edgewood Road  
Annapolis, MD 21403

Phone: 410-280-2038

# J Boats J/121

Boat Type: Racer and Cruiser



## OVERVIEW

### A 40' Offshore Speedster with Less Crew

The new J/121 (pronounced 1-2-1) is a 40' offshore speedster that can be day raced or distance sailed by just 5 or less crew.... the best short-handed J ever.... capable of winning on any race track while also excelling in daysailing and weekend mode. Here's a boat, class and program that redefines sailboat racing as a recreation and shared adventure with friends, reducing the focus on specialization and athletic short-course W/L racing. The J/121 fulfills the growing need to simplify life and reconnect with those you really want to sail with on a boat that's pure magic to sail.

#### Why a New 40 Footer?

Sailing continues to adapt to the rapidly changing demographics, technology and social trends of an ever more hectic world. As our lives become more fast-paced so does the need to escape from the time constraints, pressures and burdens. "Always on, always connected" is leading the drive to "get away" to a place that can nourish and recharge the soul. Nowhere is that more evident than the extraordinary growth of adventure travel, providing people

a much needed outlet through outdoor, shared experiences with others.

The challenge is trying to align 8-10 people onto the same schedule. This obstacle alone is impacting keelboat racing participation across the board in most areas. Just as technology is making it easier to sail, the over-reliance on crew is making it more complicated. Two of the positive growth areas in sailing today are one-design class racing in trailerable boats, and short-handed day racing and fun point to point events. The global success of the new J/70 is a direct result of pent-up demand for an affordable one-design with a pre-planned circuit and easy entry. The travel and event logistics for four people are infinitely easier than that of 8-10. For those sailing larger keelboats, it's the charity pursuit races and day distance events like San Francisco's Three Bridge Fiasco that are becoming increasingly popular. And it's no surprise why. These events pack a lot of sailing fun and adventure into more acceptable, smaller doses that require less practice and time to manage.

The J/121 is designed with both of these trends in mind. Imagine a fleet of high- performance, offshore-capable speedsters sprinting along point-to-point, around- the-island, and adventure-style races with half the normal crew size, with owners enjoying a "dream circuit" of events that tie into regional "classic" races that everyone aspires to sail in.

## SPECIFICATIONS

### Basic Information

Manufacturer:	J Boats	Boat Type:	Racer and Cruiser
Model:	J/121	Hull Material:	Fiberglass
Year:	2019	Hull Type:	Monohull
Category:	Sail		

### Dimensions & Weight

Length:	40.00 ft	Draft - max:	7 ft 10 in - 2.39 meter
LOA:	40 ft - 12.19 meter	Bridge Clearance:	-
Beam:	12 ft 4 in - 3.76 meter	Dry Weight:	11500 ft
Deadrise Aft:	-		

### Tank Capacities

Fuel Tank:	-	Holding Tank:	-
Fresh Water Tank:	-		

### Accommodations

Total Cabins:	-	Crew Cabins:	-
Total Berths:	-	Crew Berths:	-
Total Sleeps:	-	Crew Sleeps:	-
Total Heads:	1	Crew Heads:	-
Captains Cabin:	No		

## FEATURES

### Meet the J/121

Creating the best short-handed J ever starts with a hull shape that excels on all points of sail, particularly reaching.

Most classic distance races have a beat/reach/run ratio around 15%/60%/25%. Straight-line speed is the name of the game and is achieved by having a low drag, efficient hull with high form stability and exceptional balance. Add to this a highly engineered carbon rig package, an L-shaped low VCG keel, infused composite construction, and a water-ballast assist system that adds nearly 400 kilos (4 big guys) of crew weight to the rail and you have the J/121.

### **Simplified Sail-Handling**

Handling a 40 footer with 5 or fewer crew requires a rig, sail and deck plan that simplifies sail handling. New technology developed for the Vendee Globe, Volvo Race and other extreme offshore sailing events, is trickling down faster than ever, particularly in new furling systems. The J/121 class sail inventory features an AP furling J1 jib, a hoistable furling J4 inside the forestay, a furling Code Zero flown from the bowsprit, and up to two A-sails on top-down furlers. Each headsail is dedicated to its own furler, meaning less hands on the foredeck and more compact sail stowage below. Combine that with a mainsail on slides that can be quickly adjusted to three different sizes (via a double reef system) and you have a versatile, manageable sail combination across most wind/sea conditions.

### **Versatile, Ergonomic Cockpit**

J/121's ergonomic cockpit builds upon the award-winning J/111 design, with excellent working space, protection from the elements behind a soft dodger or hard canopy, and exceptional twin steering stations that allow the driver to straddle the wheel and reach all the mainsail controls while driving. Clean line sights forward from the helm and trimming positions provide immediate gear-changing input. 3D jib leads (no jib tracks) via floating trim rings allow nearly infinite placement of the jib clew (crucial for reaching) without the friction normally associated with inhauling or outhauling from a track-mounted jib car. The hydraulic backstay system features twin remote panels on the aft face of the cockpit seats. Water ballast controls are cockpit led so that the on-deck crew can easily manage the transfer or dumping of the tank(s). Electric primary and secondary winches are available (and class legal) for push button trimming ease.

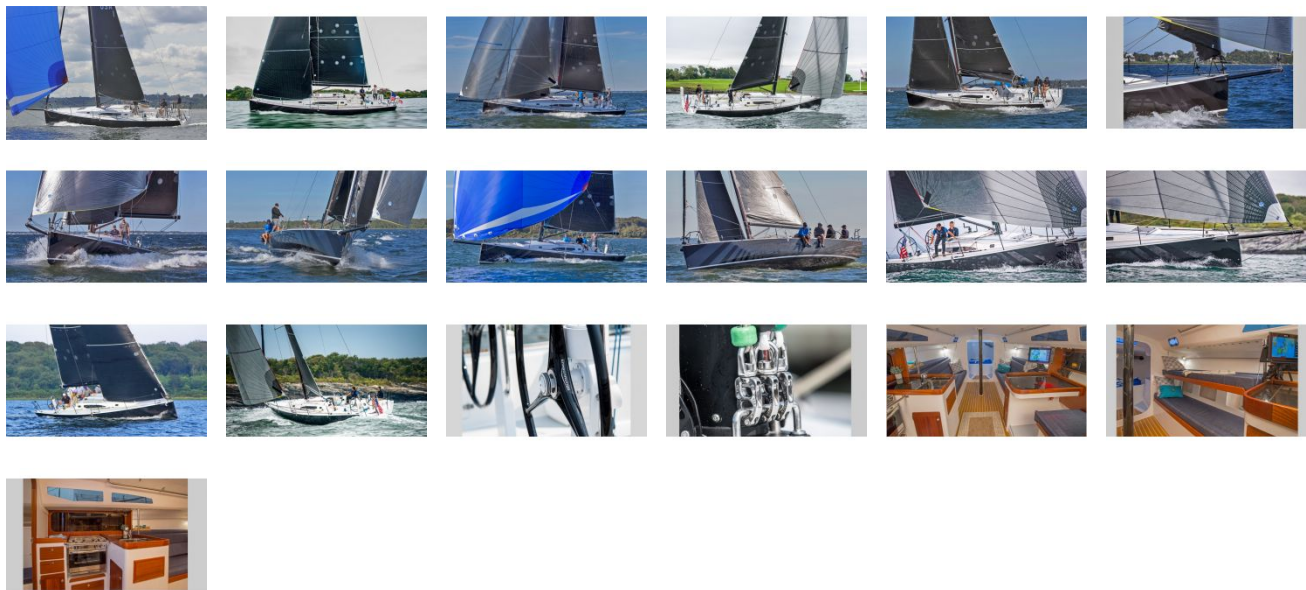
### **Spacious, Open Interior**

When the team needs moments of respite, the J/121 interior is clean and simple but beautifully finished with a feeling of space not often found in fast offshore racers. The interior is offered in Herreshoff classic (white with varnished trim accents) or modern GP Racer (white on white). For the "armchair navigator," both onshore and offshore, there is no substitute for a comfortable nav station to house all of today's modern electronics and entertainment systems. The L-shaped galley features a stove, deep SS sink, and large icebox with storage drawers and shelves to feed the hungry crew. Amidships settees are full-length for sleeping and offered in over/under configuration. The head/shower is aft to starboard near the companionway, perfect for offshore sailing. Forward of the main bulkhead is sail storage with an option for a removable V-berth.

### **Now is the Time**

The J/121 is the answer for those seeking a boat that offers compelling performance with less crew, all-around sailing versatility, low maintenance, and is fully ocean capable to be delivered on its own bottom anywhere. The J/121 is a return to the shared adventure, sail-with-friends style of sailing and racing that's more memorable and meaningful than the specialized, athletic W/L racing that's succeeded mostly in establishing a pecking order that's impossible to crack. This design hits all the hot buttons for J/sailors, but will appeal to new entrants to the sport who are drawn to turnkey adventure sailing with a pre-planned event schedule and readily available event support only the J/Network can provide.

GALLERY



**North Point Yacht Sales**  
7330 Edgewood Road  
Annapolis, MD 21403  
  
Phone: 410-280-2038