



**McMichael Yacht Brokers**  
447 East Boston Post Road  
Mamaroneck, NY 10543  
Phone: 877.606.0401

# J Boats J/122E

Boat Type: Racer and Cruiser



## OVERVIEW

**Beautiful, responsive, comfortable & fast**

**The 40' performance cruising & racing standard**

J/122 is a versatile 40 foot performance sailboat with comfortable live-aboard accommodations, a refined deck layout, low VCG keel with a moderate 7.2' draft. The hull & deck are built using superior infusion molding technology to maximize durability and long term value.

An IRC-friendly cruiser/racer, J/122 offers a completely furnished interior, a simple to manage balanced sail plan, head turning sailing performance and great looks-- perhaps the ultimate 40' day sailing, weekend, racing and cruising sailboat?

## SPECIFICATIONS

### Basic Information

Manufacturer:	J Boats	Boat Type:	Racer and Cruiser
Model:	J/122E	Hull Material:	Fiberglass
Year:	2019	Hull Type:	Monohull
Category:	Sail		

### Dimensions & Weight

Length:	40.00 ft	Draft - max:	7 ft 3 in - 2.21 meter
LOA:	40 ft - 12.19 meter	Bridge Clearance:	-
Beam:	11 ft 11 in - 3.63 meter	Dry Weight:	14900 ft
Deadrise Aft:	-		

### Tank Capacities

Fuel Tank:	35 gallons - 1 tank(s)	Holding Tank:	-
Fresh Water Tank:	42 gallons - 1 tank(s)		

### Accommodations

Total Cabins:	3	Crew Cabins:	-
Total Berths:	-	Crew Berths:	-
Total Sleeps:	-	Crew Sleeps:	-
Total Heads:	1	Crew Heads:	-
Captains Cabin:	No		

## FEATURES

### Hull & Deck Construction

- SCRIMP infusion molded sandwich construction
- Uni-and multi-directional fiberglass fabrics
- Low density light weight balsa core
- Vinylester infusion resin
- 10 year anti-osmosis warranty and a 5 year structural warranty
- Bonded overlapped hull-to-deck joint
- Infused structural grid and mast step
- SCRIMP infusion molded main bulkhead

### Keel & Rudder

- Low VCG keel with encapsulated cast iron fin & lead bulb
- Keel is bolted & bonded to shallow sump
- High aspect ratio composite rudder
- Uni and multi-directional fiberglass fabrics
- Stainless steel rudder stock
- Self-aligning performance rudder bearings

### Spars & Rigging

- Carbon fiber mast with double swept spreader configuration
- Aluminum racing boom
- Pre-molded mast wedge system
- Adjustable mast step
- Discontinuous rod standing rigging
- Hydraulic backstay adjuster with panel on steering pedestal
- Jib furling system with below deck furler drum
- Carbon fiber retracting bow sprit
- Solid boom vang with purchase
- Complete running rigging package

### **Deck Hardware**

- Harken winches & deck hardware
- Below deck 2:1 mainsheet system
- Floor mounted mainsheet traveler
- Adjustable jib tracks including 8:1 adjustable purchase
- Custom stainless steel shroud and backstay chain plates
- Bow and stern mooring cleats
- Bow anchor locker
- Overhead ventilation hatches for head, forward cabin, head & main salon
- Opening port lights for head, forward cabin, head, main salon & aft cabins
- Exhaust vent openings in main cabin overhead below sea hood
- Bow & stern rails & stanchions supported double lifelines
- Cabin top handrails
- Aluminum racing wheel with leather cover
- Compass on wheel pedestal with stainless binnacle guard
- Acrylic companionway washboard with lock, stored in aft cockpit locker
- Emergency tiller

### **Auxiliary Power**

- Volvo D2 40 HP Saildrive diesel engine & 115 AH alternator
- Volvo engine controls & fuel gauge recessed in cockpit with acrylic protection
- 35 gallon aluminum fuel tank
- Sound insulated engine compartment, ventilation pipes
- Two-blade folding propeller

### **Systems**

- Manual & Electric bilge pumps
- Pressurized fresh water system with hot water tank (5 gallon)
- Fresh water tank (42 gallon)
- DC refrigeration
- Marine toilet with holding tank system and pump out
- Two 80 AH AGM type batteries & one 70 AH battery for engine
- 12V Electrical distribution panel
- 110V distribution panel, main circuit breaker and inlet
- Halogen head & cabin lighting package
- Low voltage LED navigation lights, mast steaming and mooring lights
- Grounding system for protection against lightning
- Battery charger

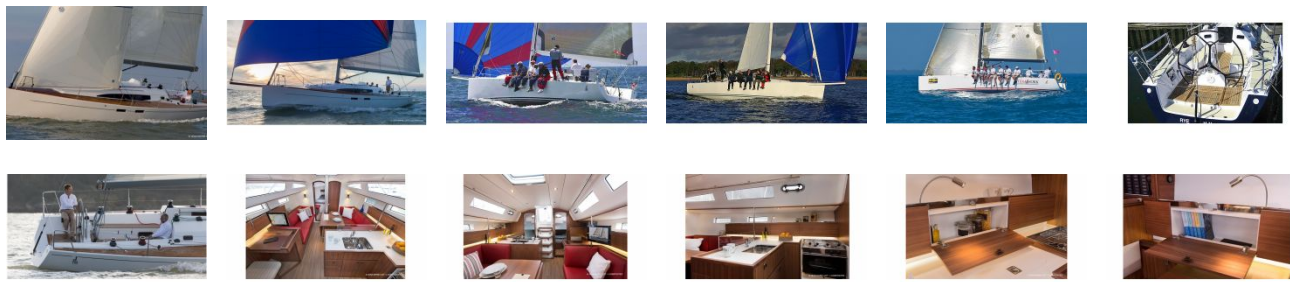
**Interior**

- Choice of layout options: 3 cabin or 2 cabin (see illustration above)
- Cold-molded, solid, and laminated mahogany wood, finished in satin varnish
- White wood effect on hull in main cabin, vinyl lining on hull in sleeping cabins
- Cored and insulated doors to all cabin areas
- Molded & enclosed head area forward with shower, storage, large sink
- Forward cabin V-berth with locker & shelf storage with great ventilation
- Main salon area with settee berths, table, lockers, safety handrails
- Large galley with double sink, LPG stove/oven, and plenty of outboard storage
- Nav station with chart and gear storage, drawers & panel for electronics
- Aft cabins with large double berths, storage lockers and shelves, port lights
- Offshore protected companionway with handrails and angled ladder treads

**Notice:**

Specifications are subject to change prior to delivery due to deletions, additions or revisions in quantity, brand or design at the sole discretion of J Boats, Inc.

GALLERY



**McMichael Yacht Brokers**  
447 East Boston Post Road  
Mamaroneck, NY 10543  
Phone: 877.606.0401