



North Point Yacht Sales

7330 Edgewood Road
Annapolis, MD 21403

Phone: 410-280-2038

Moody Aft Cockpit 41

Boat Type: Cruiser



OVERVIEW

The Moody Aft Cockpit 45 captures the spirit of a golden age of yachting whilst being completely up to date in terms of performance and comfort. The long classic coach roof with oval windows and the sturdy windscreen blend seamlessly with a modern underwater shape and an effective keel and rudder design.

The Moody Aft Cockpit 45 is a true offshore sailing yacht, with her twin-wheel steering position providing excellent visibility. The composite performance keel produces a high level of stiffness and upwind speed and a double forestay and standard well-cut sails drive the yacht forward with ease.

On deck, the Moody Aft Cockpit 45 is the epitome of pedigree and high quality, with a fine and perfectly handcrafted teak deck and solid woods throughout. Scores of clever minds and skilled hands have contributed to every Moody yacht, sharing their passion, experience and respect for the sea.

Safety and comfort are assured for everyone onboard the Moody Aft Cockpit 41 thanks to its fixed sturdy windscreen and protected cockpit. The yacht also features powerful winches and ball-bearing blocks, as well as well

dimensioned chain plates, cleats and fairleads.

The warm and elegant interior inspires a feeling of timeless elegance and well-being. The saloon provides generous seating for dinner around a beautiful star pattern table, while the navigation station is comfortable and practical both at anchor and when underway.

Experience a fine and perfectly hand-made interior with solid woods of your choice plus a classic teak deck where handcrafted solidity meets modern design. Maritime requirements are in perfect harmony with the carefully designed lighting gear in the saloon.

SPECIFICATIONS

Basic Information

Manufacturer:	Moody	Boat Type:	Cruiser
Model:	Aft Cockpit 41	Hull Material:	Fiberglass
Year:	2019	Hull Type:	Monohull
Category:	Sail		

Dimensions & Weight

Length:	41.00 ft	Draft - max:	6 ft 6 in - 1.98 meter
LOA:	41 ft 7 in - 12.67 meter	Bridge Clearance:	65 ft 4 in - 19.91 meter
Beam:	13 ft 1 in - 3.99 meter	Dry Weight:	21604 ft
Deadrise Aft:	-		

Tank Capacities

Fuel Tank:	37 gallons - 1 tank(s)	Holding Tank:	-
Fresh Water Tank:	84 gallons - 1 tank(s)		

Accommodations

Total Cabins:	2	Crew Cabins:	-
Total Berths:	-	Crew Berths:	-
Total Sleeps:	-	Crew Sleeps:	-
Total Heads:	1	Crew Heads:	-
Captains Cabin:	No		

FEATURES

HULL

- Standard colour: white hull with Moody grey stripes
- Option: classic edition with cream hull, deck and oval stainless steel windows
- Isophthalic gelcoat
- Vinylester 1st layer
- Bulk laminate polyester
- Sandwich construction (balsa above waterline, foam core below)

DECK

- Off white deck GRP
- handmade balsa sandwich construction, thermal and sound insulated
- Isophthalic gelcoat
- Vinyloester 1st layer
- Bulk laminate polyester
- Non-slip diamond pattern deck surface

STEERING SYSTEM

- Twin wheel steering system with independent chains, reducing box and drag link
- Steering wheels covered with leather
- Semi-balanced, profiled rudder with alloy shaft and self-aligning needle bearings
- Emergency tiller

KEEL

- Cruising: deep draft 2.00 m / 6'6" (cast iron)
- Option: shallow draft 1.65 m / 5'5" (composite iron/lead)
- Stainless steel keel bolts

DECK EQUIPMENT

- Self-draining anchor locker with latch hatch (electrical windlass)
- Delta anchor 20 kg, with chain 30 m (8 mm)
- Self-draining open cockpit with 2 large lockable storages
- 1 opening 70 hatch (fwd cabin), polished alloy look
- 1 opening 70 hatch (saloon), polished alloy look
- 10 SS opening windows in standard layout
- 4 stainless steel mooring cleats + 2 stainless steel spring cleats as well as 6 stainless steel fairleads
- 2 self-tailing halyard winches manual 45 AST Lewmar EVO
- 2 self-tailing electric main winches manual 50 AEST Lewmar EVO
- Halyards lead aft to cockpit
- Control lines covered on the coach roof
- Fixed stainless steel windscreen
- 2 winch handles
- Bow fitting with integrated chainplates, anchor roller, separate mooring roller and attachment position for cruising chute
- 10 halyard stoppers
- Scandinavian pulpit
- Pushpit with ensign staff socket and 2 teak seats
- 1 opening port lights in aft cabin into the steering cockpit
- Transom door with teak surface
- Sliding hatch
- Wash board split
- Washboard with ventilation grill
- Guard rail with two wires
- Standard rail gates
- Hot & Cold water shower on deck
- Teak on cockpit bottom and seats (unvarnished)
- Teak on cockpit coamings (unvarnished)
- Teak toerail (unvarnished)
- Stainless steel swim ladder
- 2 stainless steel deck vents mounted on GRP Dorade type water trap boxes

- 2 stainless steel guard rails over Dorade cowls
- 2 x pad eyes for genaker and for lifeline

PLUMBING SYSTEM / FRESH WATER

TANK

- 1 fresh water tank, capacity approx. 320 l
- Water filler on deck

HOT WATER

- Water heater, running from engine or immersion
- Heater 230 V

PUMPS

- Electrical pressurised water system

FAUCETS

- 2 quality faucets in galley and head

BILGE PUMPS

- 1 manual bilge pump
- 1 auto-electric bilge pump

TOILET/HEAD

- Plastic holding tank
- 1 manual Jabsco marine toilet

ENGINE

- Diesel approx. 27.9 kW / 38 HP
- Saildrive
- Fresh water cooling
- 2-blade fix propeller
- Fuel tank, approx. 140 l
- Fuel infill on deck
- Seawater strainer
- Fuel filter / water separator
- Revolution counter
- Engine hour meter
- Engine room sound insulated

ELECTRICS

- Shore power 230 V incl. differential breaker
- 12 V socket
- 230 V electrical circuits with AC outlets (galley, saloon, forward and aft cabin)
- SLS lighting system in salon with integrated dimmer

BATTERY CHARGER

- Battery charger 12 V / 30A.

BATTERIES

- Main battery switch

- 1 AGM engine battery: 90 Amp.
- 1 AGM service batteries: 160 Amp.

ELECTRIC CONTROL PANEL 12 V

- Switches for all onboard electrics
- Outlet 12 V
- Voltmeter
- Water / fuel gauges

ELECTRIC PANEL 230 V

- Differential breaker
- Outlet 230 V
- Separate switch for warm water heater

INTERIOR LIGHTING

- In fwd. cabin, aft cabin, saloon, galley, head, storage room, engine room
- SLS lighting system in saloon with dimmer function

NAVIGATION LIGHTS

- Steaming light
- LED Bow light
- LED Stern light
- Anchor light

NAVIGATION INSTRUMENTS

- 2 x illuminated compasses
- Log and depth temp on a tri data

GALLEY

- Solid surface, CoreanTM
- Double sink
- LPG 3-burner gas stove with oven, gimble
- Gas system and self draining LPG bottle storage (no gas bottle)
- Lockers and drawers
- Extra large 12 V fridge of approx. 130 l, top and front loader with light
- Waste bin

INTERIOR ACCOMODATION

- High quality marine plywood, mahogany, gloss varnish and rattan
- Bulkhead gloss varnish mahogany style
- Optional quality satin finish Teak interior
- Wooden round style door frames
- Wood / sandwich doors
- Teak and white stripe decor classic floorboards
- With inspection hatches and storage access

UPHOLSTERY

- According to Moody colour selection
- Softtec Visco mattresses in all cabins

FORWARD CABIN

- 2 opening port lights & 1 large skylight
- Separated from saloon by a door
- Large "island" berth
- Hanging cabinet
- Shelves above berth
- Optional layouts available

AFT CABIN

- Opening port light to cockpit
- Optional Opening port light to main cockpit
- Opening port light to side deck
- Separated from saloon by a door
- Large double berth
- Combined locker
- Optional layouts available

SALOON

- Storage capacity under seats
- Sufficient ventilation
- Companionway steps
- U-shaped settee area on starboard
- Saloon table
- Bar locker
- Lockers and shelves
- Book shelves
- 4 opening port light windows
- Blind set
- Optional layouts available

NAVIGATION AREA

- 3 drawers
- Space for optional instrument
- Seats: Combined dining and lounging seating with ergonomically designed cushioning
- Chart table with storage between single seats
- On the standard layout the forward seat is longer
- Electric switch panel

HEAD/SHOWER

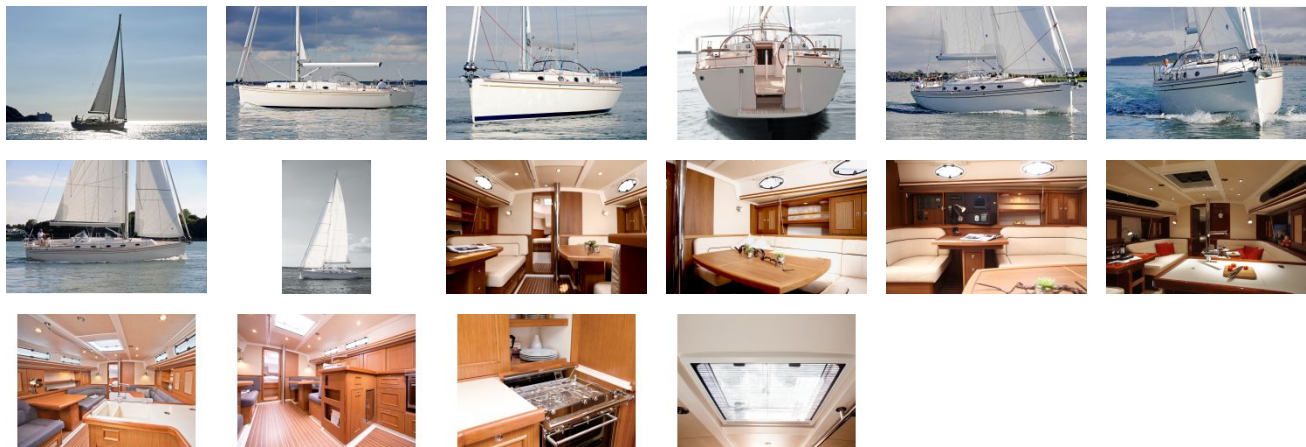
- Large head with separate shower
- Large wet-locker
- Marine toilet
- Holding tank with sea -and deck discharge
- Sink
- Electrical drain pump
- Mirror cabinet under angel for better view
- Lockers & shelves

RIGG

- 9/10 rig with provision for an optional outer furling jib and stay located just below mast head rig height

- 2 spreader anodised aluminium mast and boom
- 3 mast steps
- 2x Moody single line reefing system (cockpit handling)
- Rigid vang
- Stainless steel standing rigging
- Adjustable backstay, using winch handle type unit
- Main and jib halyard lead aft to cockpit
- Quality halyards
- Main and jib sheets
- 2:1 Block for selftacker
- Midboom sheeting with 2 stand-up blocks
- Traveller for Self-tacking jib
- Optional double forestay for genoa incl. sheet tracks
- Clutches for the furler lines— just inside the toe rail
- Darcron fully batten mainsail and selftacking jib
- Lazy bag with lazy jacks

GALLERY



North Point Yacht Sales
7330 Edgewood Road
Annapolis, MD 21403

Phone: 410-280-2038