



North Point Yacht Sales
7330 Edgewood Road
Annapolis, MD 21403
Phone: 410-280-2038

Moody Deck Saloon 45

Boat Type: Cruiser



OVERVIEW

The Moody DS45 is a true ocean cruising yacht offering you safe and comfortable blue water sailing. Her design incorporates a high degree of seaworthiness and independence. Highlights include exceptional refrigeration, water and diesel capacities, coach roof windows made of strong security glass, a solid watertight bulkhead in the bow and much more besides.

The Moody DS45 is designed to make sailing a pleasure. The self-tacking jib ensures easy and safe handling for a small crew, supported by powerful winches. The yacht can be simply manoeuvred from the helm station, with all sails easily adjustable from the helmsman's position.

Everyone onboard this yacht will feel totally safe thanks to the solid continuous bulwark and guardrail, which offers all-round security. Protected by a sliding bimini, the large cockpit serves the ideal social area in all weather conditions. When the swimming platform is open, access to the sea is just two steps away.

The Moody Deck Saloon 'one level living' concept takes a unique approach to modern yacht design. Simply open the sliding doors and enjoy a panoramic view to the living area and spacious cockpit, all on the same level. The large cockpit contains a smart table as standard while the open deck aft is ideal for spending time with family and friends. Welcome aboard.

Attention is paid to every detail, including the spacious storage compartments, pop-up TV, and the ergonomic fiddles and handrails. Even with a party underway outside there is still an opportunity to enjoy peace and quiet in the deck saloon. This area is also home to the navigator's seat and chart table, with ample space for extensive passage planning.

Experience a fine and perfectly handcrafted interior with solid woods of your choice plus a classic teak deck where handcrafted solidity meets modern design. Maritime requirements such as the solid and spacious nav station and a table with wooden rails are in perfect harmony with the carefully designed lighting gear in the saloon.

SPECIFICATIONS

Basic Information

Manufacturer:	Moody	Boat Type:	Cruiser
Model:	Deck Saloon 45	Hull Material:	Fiberglass
Year:	2019	Hull Type:	Monohull
Category:	Sail		

Dimensions & Weight

Length:	45.00 ft	Draft - max:	6 ft 3 in - 1.91 meter
LOA:	45 ft - 13.72 meter	Bridge Clearance:	71 ft 6 in - 21.79 meter
Beam:	14 ft 1 in - 4.29 meter	Dry Weight:	30864 ft
Deadrise Aft:	-		

Tank Capacities

Fuel Tank:	258 gallons - 2 tank(s)	Holding Tank:	26 gallons - 2 tank(s)
Fresh Water Tank:	210 gallons - 2 tank(s)		

Accommodations

Total Cabins:	3	Crew Cabins:	-
Total Berths:	-	Crew Berths:	-
Total Sleeps:	-	Crew Sleeps:	-
Total Heads:	2	Crew Heads:	-
Captains Cabin:	No		

FEATURES

HULL

- Vinylester hull, all outer skins
- Built with Corecell™ foam
- Gelcoat: white finish and Moody grey waterline
- Options for painted hull colours according to Moody colour selection

- GRP strongbacks
- Hull windows

DECK

- Off white deck
- Isophthalic gelcoat
- Vinylester 1st layer
- Bulk laminate polyester
- Balsa sandwich construction
- Thermal and sound isolated

STEERING SYSTEM

- Twin wheel steering system
- 2 leather covered steering wheels
- 2 semi-balanced, profiled rudders with alloy
- shaft and self-aligning needle bearings

KEEL

- Standard draft 1.99 m
- Stainless steel bolts
- Option: 1.65 m draft lead

DECK EQUIPMENT

- Full perimeter bulwark complete with continuous stainless steel handrail
- Teak on side decks
- Teak on seats and cockpit floor
- Self-draining anchor locker with electrical 1 kW windlass below deck
- 6 retractable mooring cleats
- Gas assisted retractable anchor arm with roller
- Mooring kit 25 kg Delta anchor, 60 m chain 10 mm
- Large cockpit table with integral teak folding leaves; optional 36 liter fridge in cockpit table optional chart plotter pod
- Foredeck storage
- Hot & Cold shower on deck
- Self-draining cockpit
- Dedicated side deck locker for two large gas bottles, selfdraining
- Stainless steel swim ladder
- Self-tacking jib track integrated in the foredeck
- Mainsheet twin system
- Sheave deck organizers
- Deck jammers
- Bulwark pad eyes for gennaker and track
- Hatches flush
- 6 flush port lights in hull
- Pulpit with LED navigation lights
- 2 electric Lewmar 55 EVo electrical winches in cockpit

PLUMBING SYSTEM / FRESH WATER

TANK

- 2 fresh water tanks, capacity approx. 400 l each (changed capacity with lower galley)
- 2 fuel tanks, stainless steel, capacity approx. 300 l each

- Fuel and water fillers located with in concealed side deck locker
- 2 black water holding tanks capacity approx. 50 l each
- 2 black water pump out connections located on side deck

HOT WATER

- 40 l water heater, running from engine and immersion heater 230 V

PUMPS

- Electrical pressurised water system

FAUCETS

- 2 quality faucets in galley and head

BILGE PUMPS

- 1 manual bilge pump
- Electric bilge pump with automatic switch

TOILET/HEAD

- 2x manual marine toilets

ENGINE

- Diesel approx. 78 kW / 107 HP
- Stainless steel shaft
- 3 bladed folding propeller
- 1 alternator 12 V / 80 Amp.
- Fuel filter / water separator
- Engine room sound insulated and illuminated Electric engine control at STB helm position
- Retractable bow thruster

ELECTRIC SYSTEM

- 12 V and 230 V
- Engine battery AGM 90A
- Service battery bank 3x AGM 160A
- Battery charger 50A
- Isolator switch
- 230 V shore supply protected with differential breaker and distribution system

ELECTRIC SWITCH PANEL 230 V

- With 2 differential breakers
- Control gauges & Voltage indicator

ELECTRIC SWITCH PANEL 12 V

- Switches for all onboard electrics
- Voltmeter & battery control
- Water / fuel gauges

12 V ELECTRIC EQUIPMENT

- Pumps
- Navigation lights
- Interior lights
- Refrigerator

OUTLETS 230 V

- At chart table twin outlet
- In fwd. cabin one each
- In galley twin outlet
- In saloon twin

OUTLETS 12 V

- At chart table

- At helm station

INTERIOR LIGHTING

- Overhead lighting in cabins, saloon, galley and heads
- Lighting in engine compartment
- Reading lights in saloon and cabins
- Night light on companion way
- Storage room aft

NAVIGATION LIGHTS

- LED navigation lights
- Steaming light
- Anchor light

NAVIGATION INSTRUMENTS

- 2x compass illuminated
- Log and depth sounder on a combi display

GALLEY

- Solid surface, Corean™ with integrated sinks
- 3-burner LPG stove with oven, gimballed
- Gas system and self draining LPG bottle storage on deck
- Fridge, front and top
- Lockers and drawers
- Trash can

INTERIOR ACCOMODATION

- High quality mahogany style, satin varnish
- Option: American cherry, satin varnish
- Option: teak, satin varnish
- Bulkheads
- Wooden door frames
- Wood / sandwich doors

UPHOLSTERY

- According to Moody colour selection

MASTER CABIN

- King size bed 2,100 mm length
- Under berth storage
- Choice option to stbd bureau
- Extensive locker space to both sides of the central berth
- 2 fixed hull port lights
- 2 opening coach roof skylights
- Center line coach roof skylight stripe with integrated opening coach roof hatch
- Blinds for center line coach roof skylights
- Blinds for coach roof side port lights
- Blind for head hull port light
- En suite heads with separate shower stall

STBD GUEST CABIN

- Choice of double or twin berth
- Optional: office in lieu to cabin
- Optional: galley in lieu to cabin
- Option lower galley in lieu to port guest cabin with change to chart table arrangement and stbd seats
- Generous hanging locker
- Option of en suite door to day heads

- Fixed hull port light
- Opening coach roof port light
- Blinds for coach roof port light and hull port light

PORT GUEST CABIN

- Fixed hull port light
- Opening coach roof port light
- Blind for coach roof port light and hull port light

DECK SALOON

- One level living concept with open access to the galley area and the covered cockpit
- Folding day / dining table
- Stunning panoramic windows
- Opening window on centre line forward providing excellent through air flow at anchor
- 4 opening roof skylights
- Double sliding cockpit doors with integral wash board
- Deckhouse side window blinds (6)

LAYOUT

- Lower galley option replacing the port side guest cabin with changes to the saloon area
- Removing the chart table, this area will be open to the lower galley
- To port is a long seat and storage area
- To starboard standard L shape dining and lounging area with table.

NAVIGATION AREA

- Forward facing navigators seat with generous chart table
- Chart storage within table
- Integral instrument console

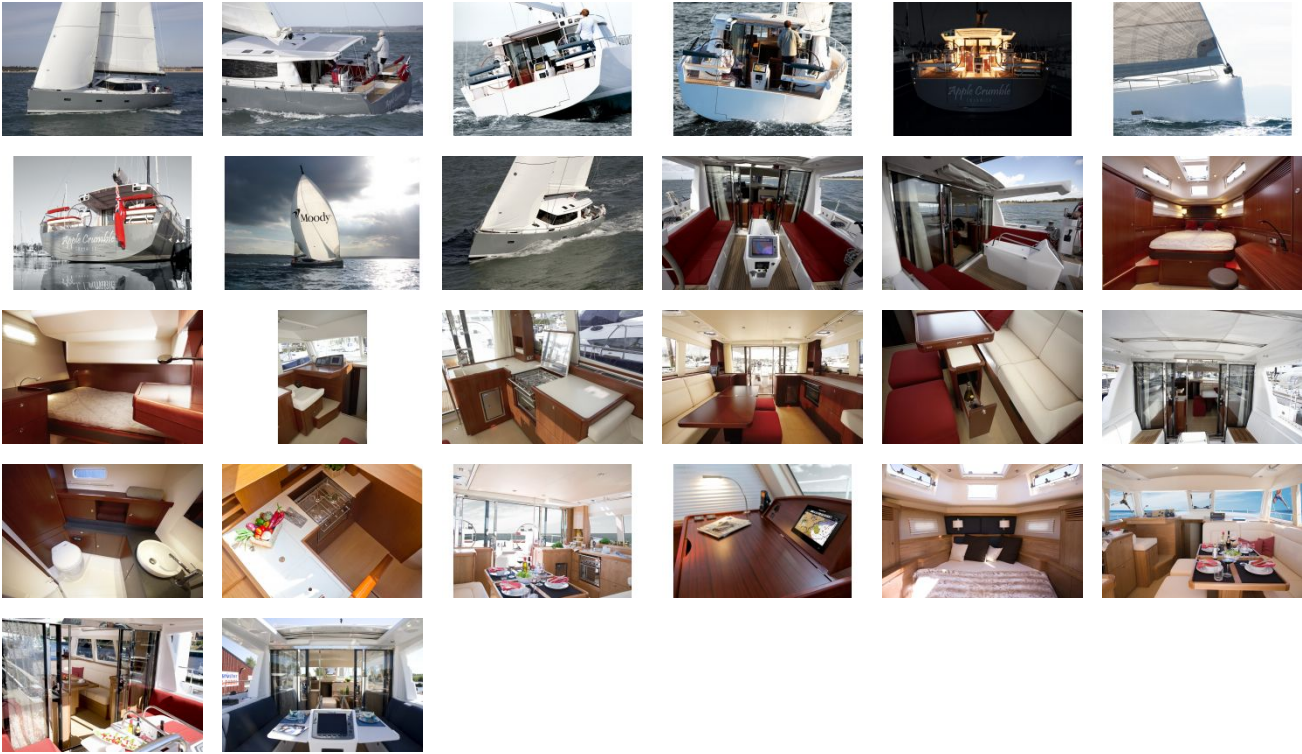
HEAD/SHOWER

- Toilet and separate stall in forward cabin with manual toilet
- Day toilet and shower to stbd with manual toilet
- Option of second shower stall to stbd
- Corean™ solid surface with sink
- Electrical drain pump
- Mirrors
- Locker & shelves
- Fixed hull port light
- Opening coach roof skylight
- Blinds for coach roof and hull port lights

RIG

- Silver anodised mast and boom
- Track for self-tacking jib
- Main halyard
- Jib halyard
- Main sheet
- Jib sheet
- Rod kicker
- Optional, electric in mast furling
- Sails: fully battened main and selftacking jib Dacron
- Lazy bag

GALLERY



North Point Yacht Sales
7330 Edgewood Road
Annapolis, MD 21403
Phone: 410-280-2038