



**North Point Yacht Sales**  
7330 Edgewood Road  
Annapolis, MD 21403

Phone: 410-280-2038

# Moody Deck Saloon 54

Boat Type: Cruiser



## OVERVIEW

The Moody DS54 is a true ocean cruising yacht. Her design incorporates a high degree of seaworthiness and independence. Highlights include exceptional refrigeration, water and diesel capacities, a walk-in motor compartment and workshop, a solid watertight bulkhead in the bow and much more besides.

Aboard the Moody DS54, everyone enjoys the feeling of moving safely. An extra-high bulwark, holders on the saloon roof and the fixed railing give a secure passage along the side deck even if the weather gets rough. This is particularly appreciated by little boaters like children and animals.

The helmseat is the spot where all threads come together. From the engine to the sails, any part can be controlled by a single helmsman. For long distance sailing it is highly desirable to operate the boat from inside, which can be easily done by the autopilot system in the saloon.

All elements of the Moody DS54 are elaborately manufactured and most precisely fitted wherever you look at. Electronical components, mechanical parts, furniture: Each detail meets the highest standards and serves the

intention to make your cruise as comfortable as possibly can be – under any conditions.

Experience a fine and perfect interior with solid woods plus a classic teak deck where handcrafted solidity meets modern design. The Moody DS54 benefits from an extra-safe construction with strong bulkheads sturdily connected with hand-laid laminates to the hull and deck.

## SPECIFICATIONS

### Basic Information

Manufacturer:	Moody	Boat Type:	Cruiser
Model:	Deck Saloon 54	Hull Material:	Fiberglass
Year:	2019	Hull Type:	Monohull
Category:	Sail		

### Dimensions & Weight

Length:	54.00 ft	Draft - max:	8 ft 5 in - 2.57 meter
LOA:	56 ft 1 in - 17.09 meter	Bridge Clearance:	83 ft - 25.3 meter
Beam:	17 ft - 5.18 meter	Dry Weight:	53550 ft
Deadrise Aft:	-		

### Tank Capacities

Fuel Tank:	138 gallons - 1 tank(s)	Holding Tank:	-
Fresh Water Tank:	214 gallons - 1 tank(s)		

### Accommodations

Total Cabins:	4	Crew Cabins:	-
Total Berths:	-	Crew Berths:	-
Total Sleeps:	-	Crew Sleeps:	-
Total Heads:	2	Crew Heads:	-
Captains Cabin:	No		

## FEATURES

### HULL

- GRP hull, with sandwich construction all outer skins in Vinylester
- Gel coat: white finish and Moody Grey waterline
- Option gel coat hull colour according to Moody colour selection
- Options for painted hull colors according to Moody colour selection
- Isophatalic gel coat
- GRP strong backs
- Hull windows

### DECK

- White grp deck
- Isophatalic gelcoat
- Bulk laminate polyester

- Balsa sandwich construction
- Thermal and sound isolated

#### STEERING SYSTEM

- Redundant Twin wheel steering system
- 2 leather covered steering wheels
- Steering pedestals with instrument consoles
- Semi-balanced, profiled rudder with alloy,
- Shaft and self-aligning needle bearings

#### KEEL

- Standard L shape keel 2,65m
- Stainless steel bolts
- Optional shoal draft approx. 2,25m

#### DECK EQUIPMENT

- Full perimeter bulwark complete with continuous stainless steel handrail
- Teak on side decks
- Teak on seats and cockpit floor
- 1 x standard electronic engine control at helm station stbd.
- Self-draining anchor locker with electrical windlass on deck
- 8 retractable mooring cleats
- Fixed Anchor arm with double anchor roller, putting for second forestay
- Mooring kit 40kg Delta anchor, 60 m chain 12 mm
- Large cockpit table with teak folding leaf;
- Optional fridge in cockpit
- Foredeck sail locker with ladder & large hatch
- Hot & Cold shower on deck
- Self-draining cockpit
- Dedicated side deck locker for two large gas bottles, self-draining
- Stainless steel swimming ladder
- Self-tacking jib track integrated in the foredeck
- Mainsheet twin system
- Sheave deck organizers (2 x 4)
- Deck jammers (2 x 4)
- Track on bulwark for genoa sheet block
- Hatches flush on deck and saloon
- openable) 2 large hatches in forward cabin, 2 large and 2 small in salon, 2 small in each head
- 12 flush port lights in hull.
- Openable windows in superstructure for heads, and cabins
- Pulpit with LED navigation lights
- 2 electric Lewmar 65 CAST EVO winches in cockpit
- Rail gates on both sides with boarding ladder

#### PLUMBING SYSTEM / FRESH WATER

##### TANK

- Fresh water tank, capacity approx. 800 l
- fuel tanks, total capacity approx. 520 l
- optional 920 L fuel in total
- Fuel and water fillers located within concealed side deck locker

- 3 black water holding tanks capacity approx. 80 l each with deck and under water outlet

#### HOT WATER

- 40 l water heater, running from engine and immersion heater 230 V

#### PUMPS

- Electrical pressurized water system,

#### FAUCETS

- 4 quality faucets in galley and head

#### DRAINING PUMPS

#### BILGE PUMPS

- 1 manual bilge pump
- 3 Electric bilge pump with automatic switch

#### TOILET/HEAD

- 2x manual marine toilets
- 1x manual elect. Toilet in owner's cabin
- Optional all toilets electric

#### ENGINE

- Diesel approx. 107 kW / 146 HP
- Stainless steel shaft
- 4 bladed folding propeller
- 1 alternator 12 V / 120 Amp.
- Fuel filter / water separator
- Engine room sound insulated and illuminated
- Optional generator 8000i (6 KW) or 15000i (12 KW)

#### ELECTRIC SYSTEM

- 12 V and 230 V
- Bow thruster, retractable 24Volt
- Optional Stern Thruster 24 Volt
- Engine battery AGM 90Ah
- Service battery bank 4 x AGM 160Ah
- Optional battery pack addition 4 x AGM 160Ah
- Battery charger 70A
- Isolator switch
- 230 V shore supply protected with differential breaker and distribution system
- inverter, 2500W

#### ELECTRIC BUS System 12 V

- C-zone Bus system
- Manual safety back-up system for all elementary users
- Water / fuel gauges

#### 12 V ELECTRIC EQUIPMENT

- Pumps
- Navigation lights led
- Interior lights led
- Refrigerator

#### OUTLETS 230 V

- At chart table
- In fwd. cabin 2x
- In galley 2 twin outlet
- In saloon 2x twin
- In guest cabin double for each
- One in sail locker

- double in aft cabin

#### OUTLETS 12 V

- At chart table
- At helm station

#### INTERIOR LIGHTING

- Overhead lighting in cabins, saloon, galley and heads
- Lighting in engine compartment
- Indirect lights in saloon and owners cabin
- Indirect lights in galley
- Cockpit lights
- Reading lights in saloon and cabins
- Night light in saloon and cockpit
- Lighting in sail locker and storage locker

#### NAVIGATION LIGHTS

- LED navigation lights
- Steaming light
- Anchor light

#### NAVIGATION INSTRUMENTS

- 2 x compass illuminated
- Log and depth sounder on a combi display

#### GALLEY

- Solid surface, Corean™ with integrated sinks
- 3-burner LPG stove with oven, gimballed
- Gas system and self-draining LPG bottle storage
- Fridge, approx. 140 l
- Lockers and drawers
- Double waste bin

#### INTERIOR ACCOMODATION

- High quality marine plywood, mahogany finish, satin varnish
- Option: American cherry, satin varnish
- Option: Teak, satin varnish
- Bulkheads
- Wooden door frames
- Wood / sandwich doors
- Fabric details at head boards berths, rounded edges etc.
- Acacia floors standard
- Optional carpets,

#### UPHOLSTERY

- According to Moody colour selection

#### MASTER CABIN

- King size bed 2100 mm length
- Under berth storage
- Extensive locker space to both sides of the central berth
- 2 fixed hull port lights
- 2 opening coach roof skylights
- 2 opening coach roof side port lights
- Center line coach roof skylight stripe with integrated opening coach roof hatch
- Blinds for center line coach roof skylights

- Blinds for coach roof side port lights
- Blind for head hull port light
- En suite head with separate shower stall

#### STBD SIDE GUEST CABIN

- Double berth
- 2 Fixed hull port light
- Opening coach roof port light
- Blinds for coach roof port light and hull port light
- Option (or standard) lower galley in lieu to starboard guest cabin

#### PORT SIDE GUEST CABIN (VIP CABIN)

- Double berth
- Large hanging locker
- Multiple lockers on the side
- Headroom next to berth
- En suite head with separate shower
- 2 Fixed hull port light
- Opening coach roof port light
- Blinds for coach roof port light and hull port light

#### DECK SALOON

- One level living concept with open access to the galley below (option) or galley up next to the cockpit (Standard).
- Cockpit with integrated Bimini
- Folding day / dining table
- Launching area with coffee table, TV with TV lift (optional with galley down)
- Stunning panoramic windows
- Centerline skylights
- 4 opening roof skylights
- Single sliding cockpit door and window, with integral wash board
- Deckhouse side window blinds

#### NAVIGATION AREA

- Forward facing navigators seat with chart table at starboard side front when galley up
- Forward facing navigators seat with chart table at port aft when galley down with access to aft cabin
- Integral instrument console

#### AFT CABIN

- 3 steps down
- Large hanging locker
- Head with sink and shower
- Twin berths
- openable port lights to side deck
- port light in hull

#### HEAD/SHOWER

- Toilet and separate shower in forward cabin with electric toilet
- Toilet and separate shower to portside with manual toilet
- Corean™ solid surface with sink
- Electrical drain pump
- Mirrors
- Locker & shelves
- Fixed hull port light
- Opening hatch
- Blinds for coach roof and hull port lights

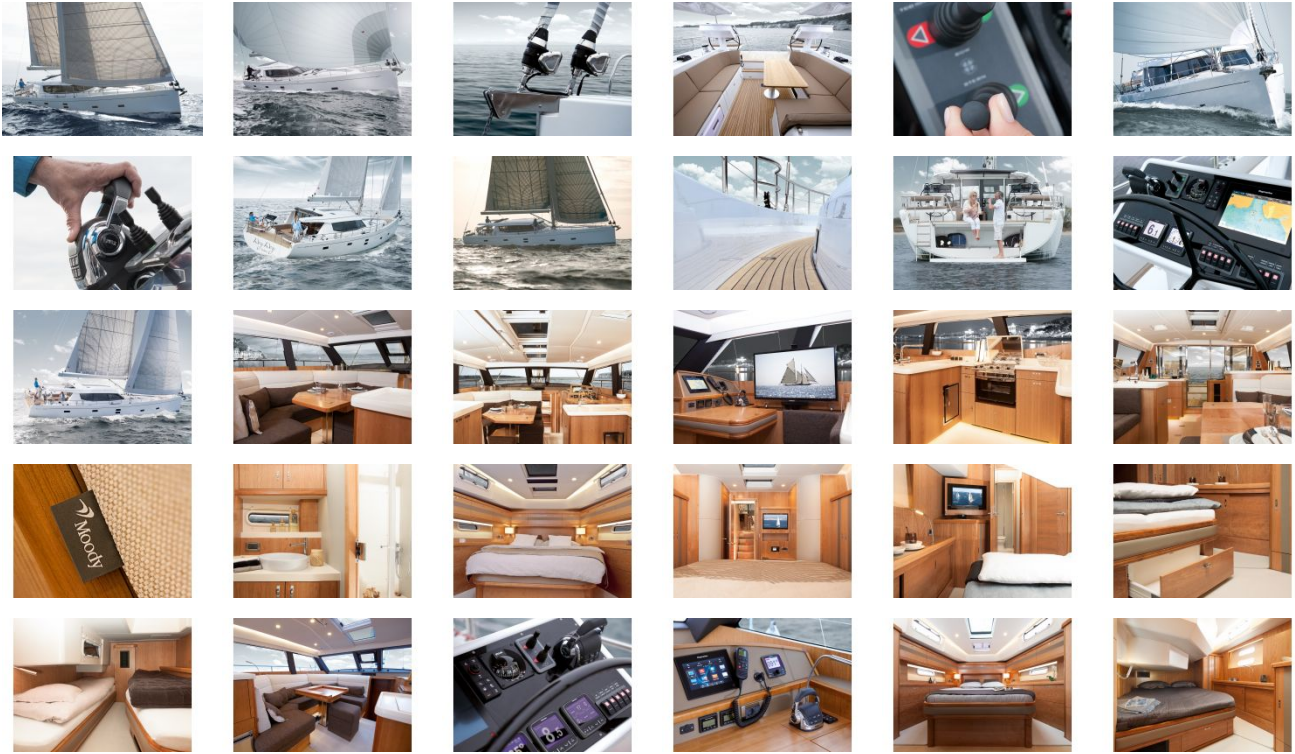
#### SAIL LOCKER

- Standard spacious sail locker
- Access to bow thruster

#### RIGG

- Silver anodized mast and boom Selden, electric in mast furling
- Track for self-tacking jib
- Main halyard
- Jib halyard
- Main sheet
- Jib sheet
- Boom lift
- Sails: optional

# GALLERY



**North Point Yacht Sales**  
7330 Edgewood Road  
Annapolis, MD 21403

Phone: 410-280-2038