



**DimillosYacht Sales**  
1 Long Wharf, Portland, ME 04101  
Phone: 207-773-7632

# Coastal Craft 45

Boat Type: Motor Yacht



## OVERVIEW

The flagship of the Coastal Craft line, the 45 embodies all of the qualities that have made Coastal Craft Yachts famous. We invite buyers to be involved in the planning stages of their new Coastal Craft 45 to choose finishes, colors and custom features insuring that your new yacht is a one-of-a-kind masterpiece that will represent value and a source of pride for years to come.

The 45 starts with a commercial quality welded aluminum planing hull that slices through choppy seas at speeds far exceeding the typical cruiser. The main helm station is roomy and comfortable, featuring a CCB doublewide seat, Edson wood-trimmed tilt wheel and joystick control. Additional control stations at the aft cockpit and flybridge also include joystick controls. The spacious flybridge is accessed by way of a gentle sloping stainless steel staircase from the aft cockpit. The upper deck offers seating for 10 along with a wet bar and sound system. The extended hardtop is home to the davit crane, dinghy and custom dinghy caulks. The folding radar tower holds a variety of different navigation and entertainment antennas and receivers to make for safe and comfortable passages.

## SPECIFICATIONS

### Basic Information

Manufacturer:	Coastal Craft	Boat Type:	Motor Yacht
Model:	45	Hull Material:	Aluminum
Year:	2016	Hull Type:	
Category:	Power		

### Dimensions & Weight

Length:	45.00 ft	Draft - max:	3 ft 10 in - 1.17 meter
LOA:	48 ft 6 in - 14.78 meter	Bridge Clearance:	-
Beam:	15 ft 3 in - 4.65 meter	Dry Weight:	30500 ft
Deadrise Aft:	-		

### Tank Capacities

Fuel Tank:	-	Holding Tank:	-
Fresh Water Tank:	-		

### Accommodations

Total Cabins:	2	Crew Cabins:	-
Total Berths:	-	Crew Berths:	-
Total Sleeps:	-	Crew Sleeps:	-
Total Heads:	-	Crew Heads:	-
Captains Cabin:	No		

## FEATURES

### INTERIORS

The well-equipped salon and galley are open to the helm, enabling chef, guests and skipper to visit for an evening of fine dining. A drop down LCD TV and Bose sound system complete the entertainment. Teak and holly floors extend from salon through the forward master stateroom, which is equipped with a queen berth surrounded by cherry cabinets and a private head and separate shower. A guest stateroom located below the salon features an oversized queen berth and adjacent guest head. The salon settee also converts to a queen berth enabling 6 people to sleep comfortably.

### PERFORMANCE PROPULSION TECHNOLOGY

The 45 is powered by twin Volvo D6-435 high performance diesel engines equipped with Volvo IPS 600 drives. This innovative drive system utilizes forward facing Duo-props that run parallel to the hull, drawing un-disturbed water from a flat, hydrodynamic hull surface. A joystick control rotates the drives independently allowing effortless control for maneuvering and docking – including the ability to supply thrust directly sideways, eliminating the need for a bow or stern thruster. Volvo's Dynamic Position System offers virtual anchoring and will hold the vessel's position stationary even in a strong wind or in a tidal current.

The 45 offers a top speed of 32 knots and efficient continuous cruising speeds between 8 and 28 knots. Equally impressive is her fuel efficiency of 1 mile per gallon at 27 knots and near 3 miles per gallon at 8 knots.

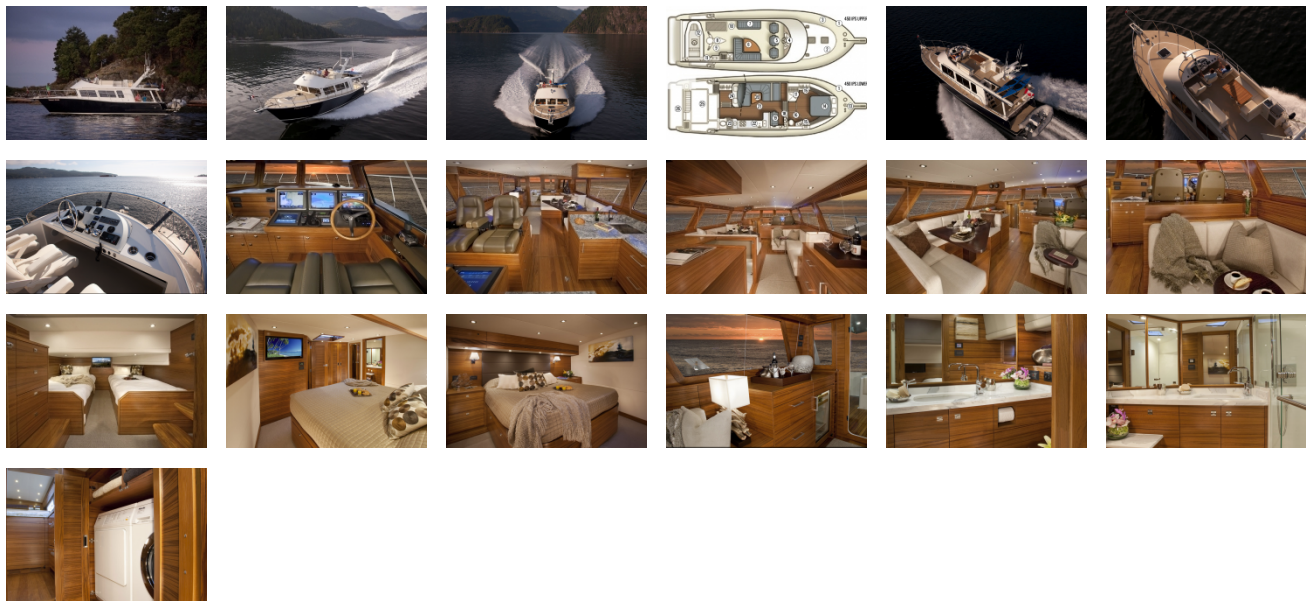
## External Links

- [Coastal Craft](#)

## Attachment

- [Performance Data](#)

GALLERY



**DimillosYacht Sales**  
1 Long Wharf, Portland, ME 04101  
Phone: 207-773-7632